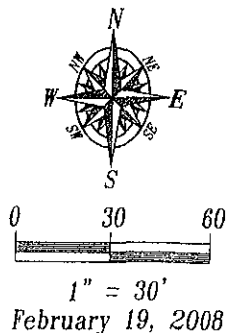
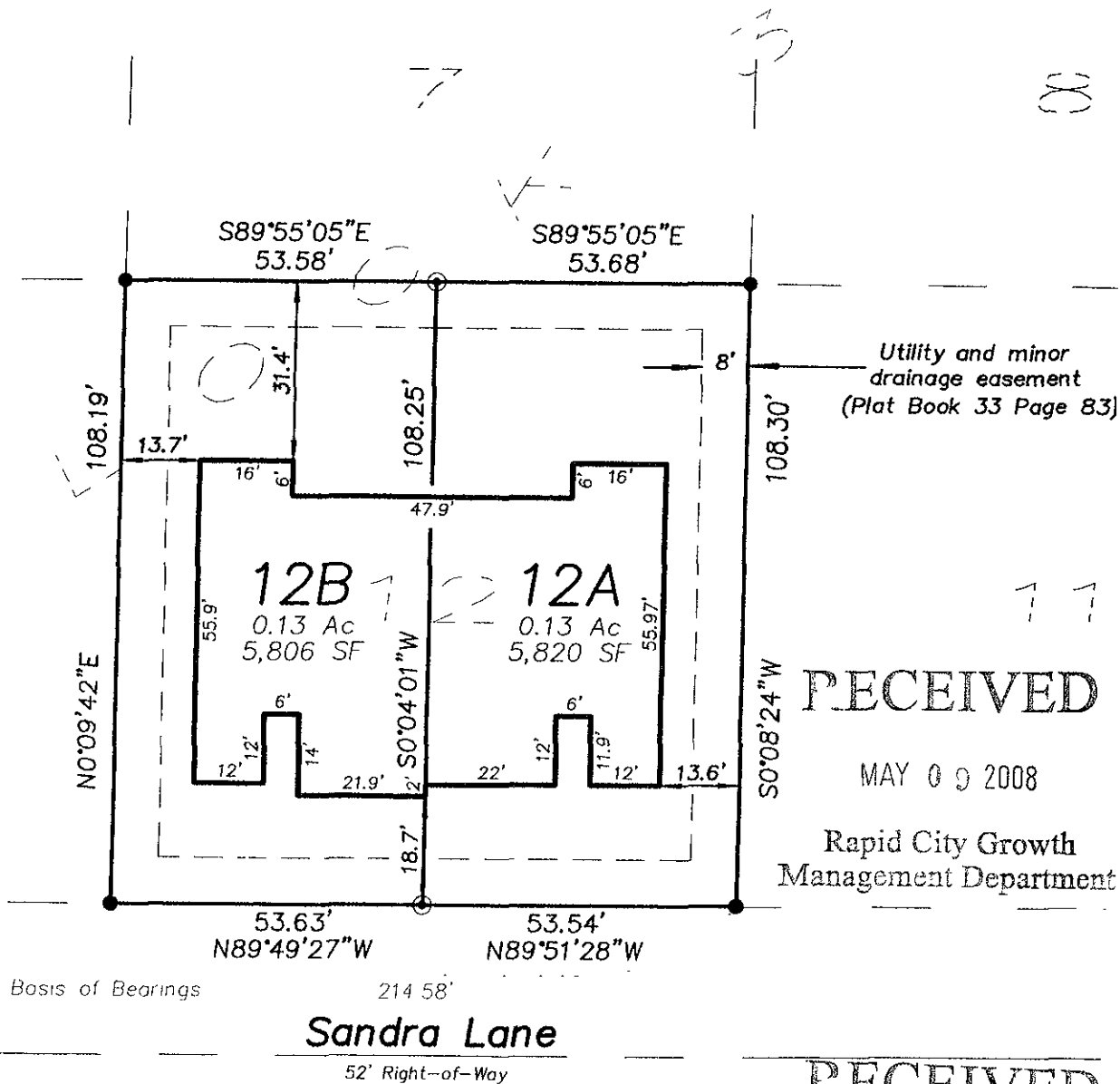


**Plat of Lots 12A and 12B of Lot 12,
Block 3 of Gemstone Subdivision,**
(formerly all of Lots 12 of Block 3 of Gemstone Subdivision)
Located in Section 19, T1N, R8E, BHM, 08PD023
Rapid City, Pennington County, South Dakota



- = Found Survey Monument, LS6251 or as noted
- ⊙ = Set Rebar with cap marked "RW Fisk 6565"



RECEIVED

MAY 09 2008

Rapid City Growth
Management Department

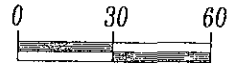
RECEIVED

MAY 09 2008

Rapid City Growth
Management Department

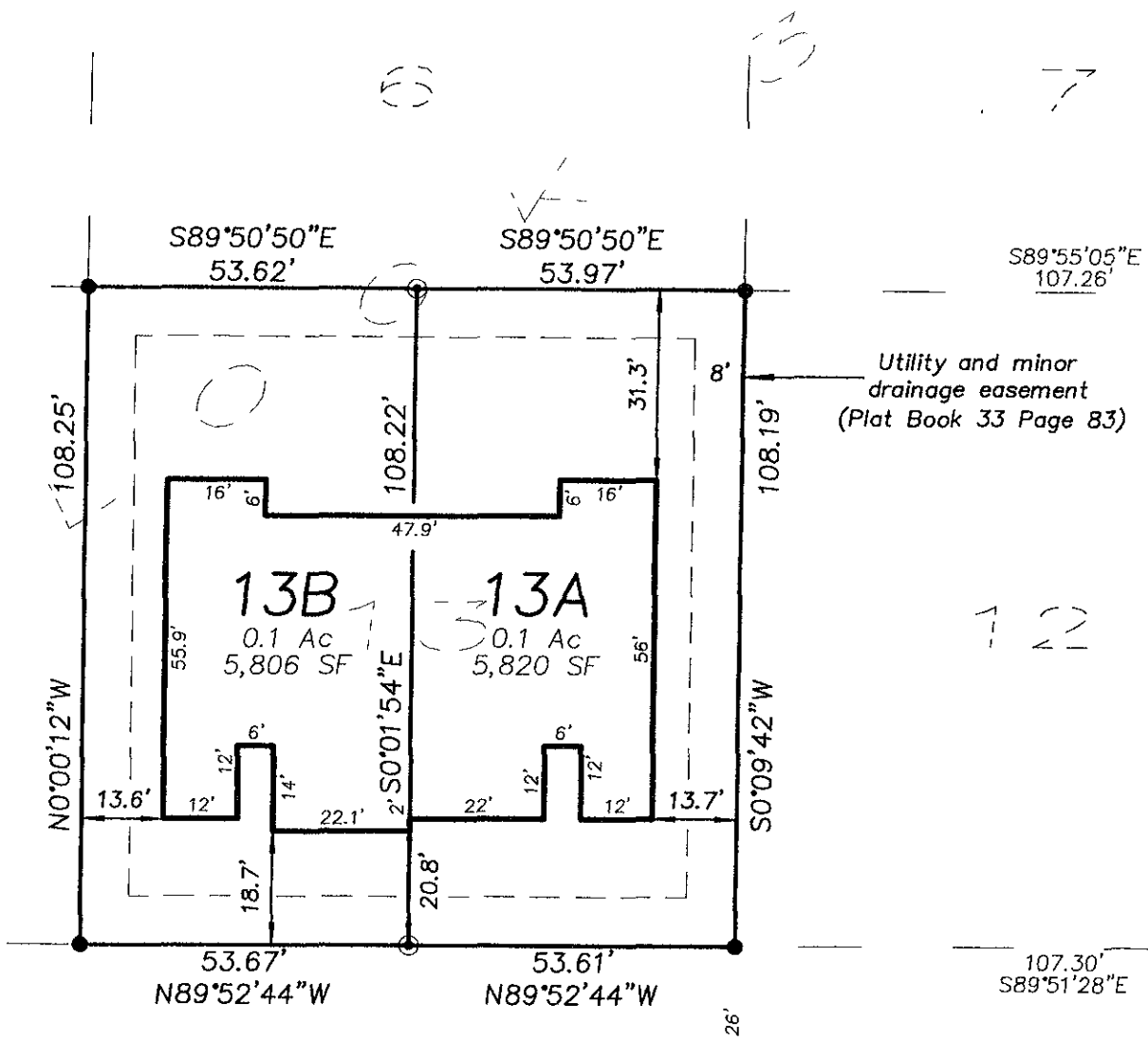
PREPARED BY:

**Plat of Lots 13A and 13B of Lot 13,
Block 3 of Gemstone Subdivision,
(formerly all of Lots 13 of Block 3 of Gemstone Subdivision)
Located in Section 19, T1N, R8E, BHM, 08PD023
Rapid City, Pennington County, South Dakota**



1" = 30'
October 23, 2007

- = Found Survey Monument, LS6251 or as noted
- ⊙ = Set Rebar with cap marked "RW Fisk 6565"



Sandra Lane Basis of Bearings
52' Right-of-Way S89°52'06"E

RECEIVED

MAY 6 2008

Rapid City Growth
Management Department