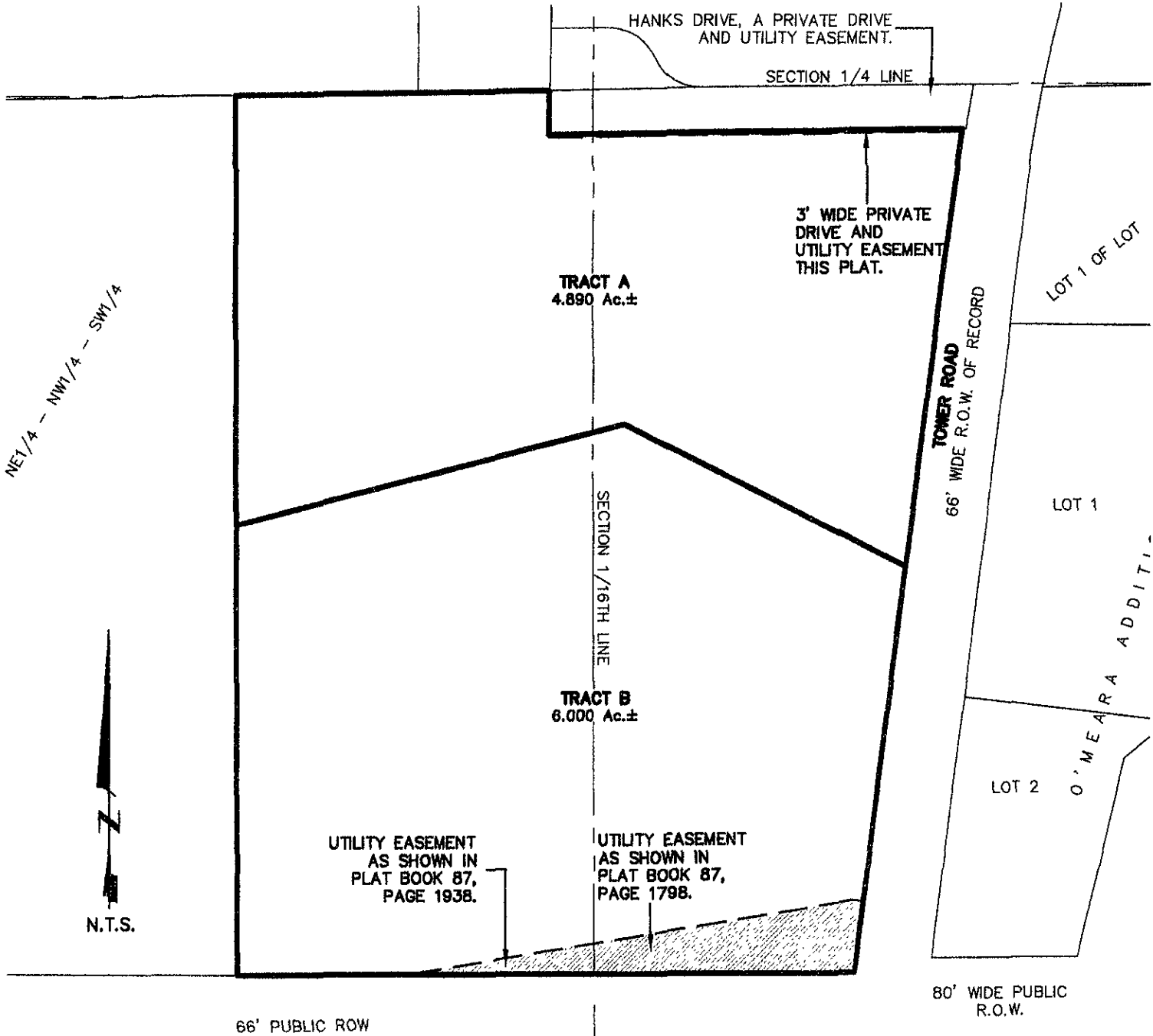


# PLAT OF TRACTS A AND B, TOWER PLACE SUBDIVISION

(description formerly as shown in Book 57 of Deeds, Page 7057,  
recorded on January 26, 1995.)

LOCATED IN THE N1/2 OF THE SW1/4,  
SECTION 14, T1N, R7E, BHM  
RAPID CITY, PENNINGTON COUNTY, SOUTH DAKOTA



CITY HALL 1903

LOT A

## Renner & Associates, LLC.

616 Sixth St. \* Rapid City, SD 57701 \* 605/721-7310  
FAX: 605/721-7313 \* E-MAIL: Gary@RennerAssoc.com  
\* Spearfish 605/717-0016 \*

LOT B