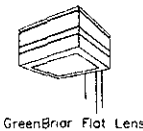
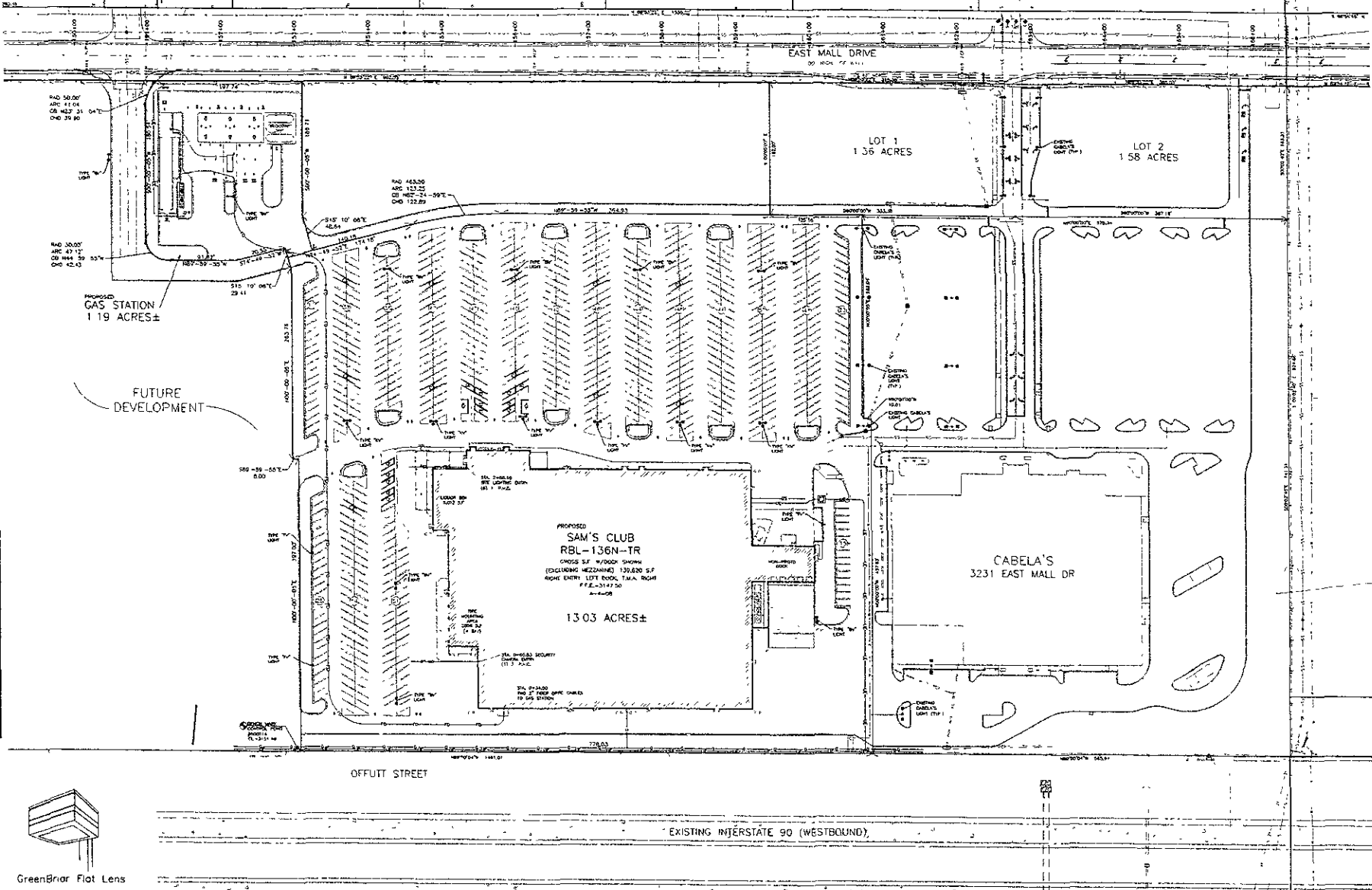


REVISIONS	



PRELIMINARY DRAWING
FOR REVIEW PURPOSES ONLY
NOT TO BE USED FOR CONSTRUCTION

SAM'S CLUB #6865-09
RAPID CITY, PENNINGTON COUNTY, SD
SAM'S WEST, INC 2001 SE 10TH ST.
BENTONVILLE, AR 72716



Symbol	Qty	Label	Wattage	LF	Description	Total Watts