

# I-90 HEARTLAND BUSINESS PARK

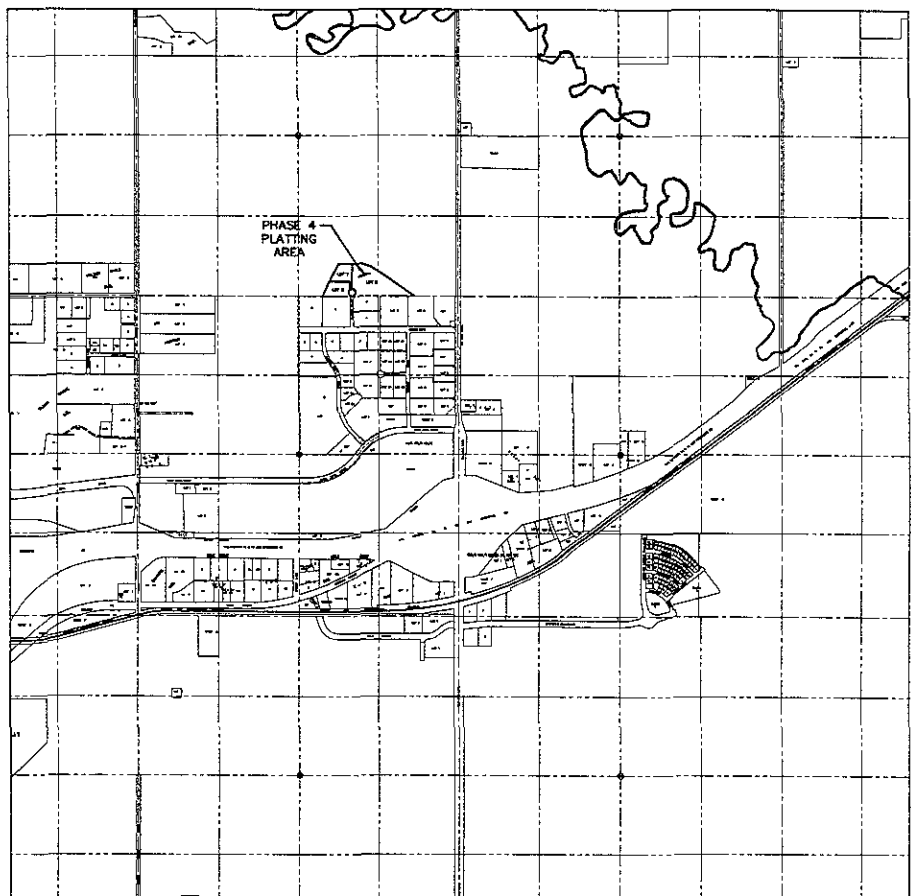
## PHASE 4

### RAPID CITY, SD

RECEIVED

APR 25 2008

Rapid City Growth  
Management Department



**CONSTRUCTION NOTES:**

- GENERAL NOTES:**
1. THE CONTRACTOR SHALL SECURE ALL REQUIRED PERMITS PRIOR TO BEGINNING WORK.
  2. ALL EXISTING UTILITIES MAY NOT BE SHOWN OR THE LOCATIONS MAY VARY FROM THAT SHOWN. THE CONTRACTOR IS RESPONSIBLE TO MAKE ALL UTILITIES LOCATED PRIOR TO BEGINNING WORK.
  3. PROVIDE TRAFFIC CONTROL DURING CONSTRUCTION IN ACCORDANCE WITH THE MANUAL OF UNIFORM TRAFFIC CONTROL DEVICES. PROVIDE TRAFFIC PLAN TO CITY FOR APPROVAL.
- SPECIFICATIONS AND DETAILS TO BE USED:**
1. UNLESS OTHERWISE NOTED OR SPECIFIED ALL WORK SHALL COMPLY WITH THE 2004 EDITION OF THE CITY OF RAPID CITY STANDARD SPECIFICATIONS FOR PUBLIC WORKS CONSTRUCTION.
  2. UNLESS OTHERWISE SHOWN OR NOTED ALL STANDARD DETAILS SHALL BE PER THE 2004 EDITION OF THE CITY OF RAPID CITY STANDARD SPECIFICATIONS FOR PUBLIC WORKS CONSTRUCTION.
- UTILITY SERVICE LINES:**
1. UNLESS OTHERWISE NOTED, ALL PHASE 4 SERVICE LINES SHALL BE CONSTRUCTED TO CENTER LINE OF TRAVEL LOCATIONS AND SHOWN ON THIS DRAWING UNLESS THE FINAL LOCATION OF EACH SERVICE SHALL BE DETERMINED BY THE OWNER. SERVICE SERVICES TO BE INSTALLED AT MENHUS CORNER UNLESS OTHERWISE APPROVED BY OWNER. MARK OUT OF SERVICE LINES WITH POST.
  2. WATER SERVICE LINES ARE NOT BEING CONSTRUCTED WITH THIS PROJECT. VERIFY WATER SERVICE LINE WITH OWNER.
- WATER MAIN, CURB AND FITTING RESTRAINTS:**
1. CONCRETE THRUST RESTRAINTS AND JOINT RESTRAINING DEVICES SHALL BE PER SECTIONS B.3.1.10 AND B.3.1.11 OF THE CITY OF RAPID CITY STANDARD SPECIFICATIONS WATER MAIN CORROSION CONTROL.
  2. CORROSION PROTECTION FOR ALL WATER MAIN & APPURTENANCES SHALL COMPLY WITH THE REQUIREMENTS OF CORROSION CONTROL REQUIREMENTS - WATER SYSTEM IMPROVEMENTS, PHASE 3. THESE REQUIREMENTS ARE IN BOOKLET FORM UNDER SEPARATE COVER.
- GRADING:**
1. THE GRADING PLAN PROVIDES FOR GENERAL GRADING AND BASIC STORM WATER DRAINAGE PATTERNS. THE SERVICES LAND DEVELOPMENT CONTRACTOR OR INFERRIAL LOT DEVELOPER SHALL PROVIDE FOR DETAILED GRADING AND ADEQUATE STORM WATER DRAINAGE AWAY FROM AND AROUND THE IMPROVEMENTS OR CONSTRUCTION OF EACH LOT OR PARCEL OF GROUND.
  2. ALL GRADING FOR STREETS SHALL COMPLY WITH FROM CITY OF RAPID CITY STANDARD SPECIFICATIONS FOR PUBLIC WORKS CONSTRUCTION. GRADING OUTSIDE OF THE STREET RIGHT OF WAY SHALL COMPLY WITH THE SAME ELEVATION AND DRAINAGE/STORMWATER SPECIFICATIONS REQUIRED FOR STREETS.
  3. THE SITE GRADING ELEVATION AND PLACEMENT OF FILL SHALL BE IN ACCORDANCE WITH CURRENT REGULATIONS AND PROCEDURES FOR SUBSIDION CONSTRUCTION IN RAPID CITY, SD, AND AS SHOWN ON THESE DRAWINGS. THE FILL HAS NOT CONDUCTED A SETTLEMENT EVALUATION OF THIS SITE. THE FILL MAKER HAS NOT CONDUCTED OR OBTAINED ANY OTHER TESTS OR SAMPLES OF THE ADEQUACY OF FILL AND FOUNDATION CONDITIONS FOR GRADING, STREETS, UTILITIES AND OTHER STRUCTURAL APPURTENANCES IRRESPECTIVE OF THE ADEQUACY OF SITE GRADING AND SOIL PLACEMENT OPERATIONS.
- EROSION CONTROL:**
1. ALL AREAS, ESPECIALLY THOSE AREAS TO BE PAVED, THAT ARE DISTURBED DURING CONSTRUCTION SHALL BE SEDED, FERTILIZED AND MAINTAINED FOR EROSION CONTROL, AS DIRECTED BY THE OWNER.
  2. TEMPORARY EROSION CONTROL MEASURES TO BE MAINTAINED UNTIL PERMANENT VEGETATION GROWTH HAS BEEN ACHIEVED.
  3. SEE ADDITIONAL NOTES ON GRADING PLAN & SWPP.

VICINITY MAP  
SCALE 1" = 800'

**INDEX OF SHEETS**

1. TITLE SHEET
2. GRADING PLAN & EROSION CONTROL PLAN
3. REARDEN COURT PLAN & PROFILE
4. STORMWATER POLLUTION PROTECTION PLAN

DEVELOPER  
BYPASS LLC  
PO BOX 2624  
RAPID CITY, SD 57709  
CONTACT: PAT TILUSTOS  
394-3310

**F M G, Inc.**  
2700 Elvings Road  
Rapid City, SD 57705-0317  
(605) 342-4646 ext. 448-4528  
www.fmg-engineering.com

**PHASE 4  
I-90 HEARTLAND BUSINESS PARK  
RAPID CITY, SD**

Revision / Date

Sheet Name

TITLE SHEET

Sheet Number

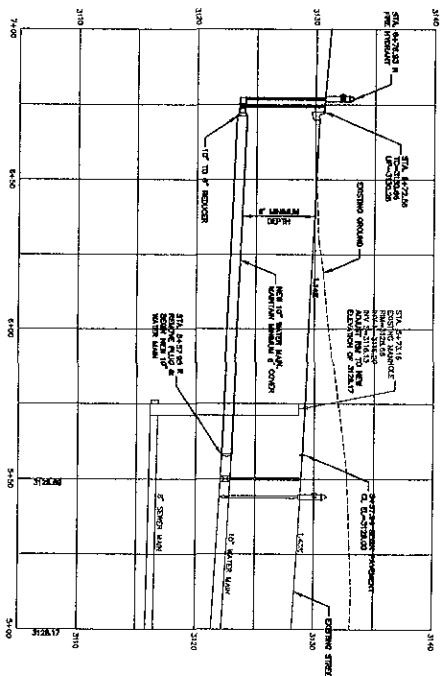
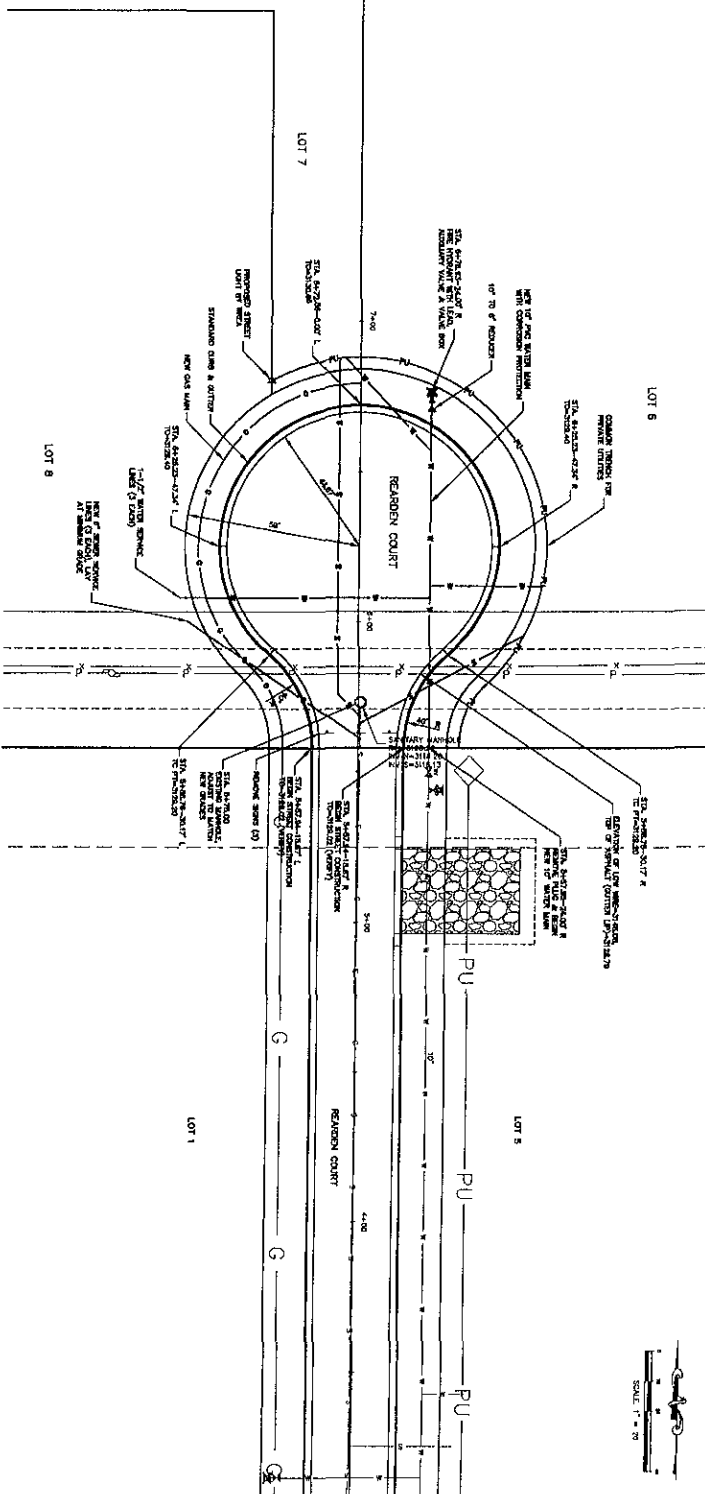
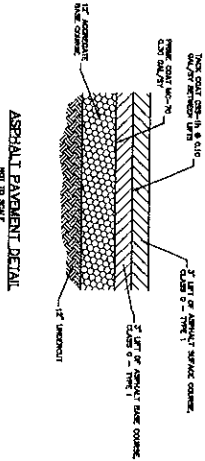
**1**

Total Sheets

**4**

FIG No. - 889 13  
Location  
S&VA SECTION 21  
T2N, 86E, R4W  
Designed by: MGT/MS  
Date: 04/23/08  
Designed by: JCF  
Checked by: JCF

APRIL 2008



RECEIVED  
APR 25 2008  
Rapid City  
Management

SHEET NO. 3 TOTAL SHEETS 4	<b>PHASE 4</b> <b>I-90 HEARTLAND BUSINESS PARK</b> <b>RAPID CITY, SD</b>	APRIL 2008	<b>FMG, Inc.</b> 3700 Stung's Road Rapid City, SD 57702-0317 (605) 342-4100 FAX (605) 342-4222 www.fmgengineering.com
Sheet Number <b>3</b>	Plan and Profile	Designed by: JAC Checked by: JAC	Drawn by: JAC Checked by: JAC
Revision / Date	Sheet Name	Project Name / Date	

