

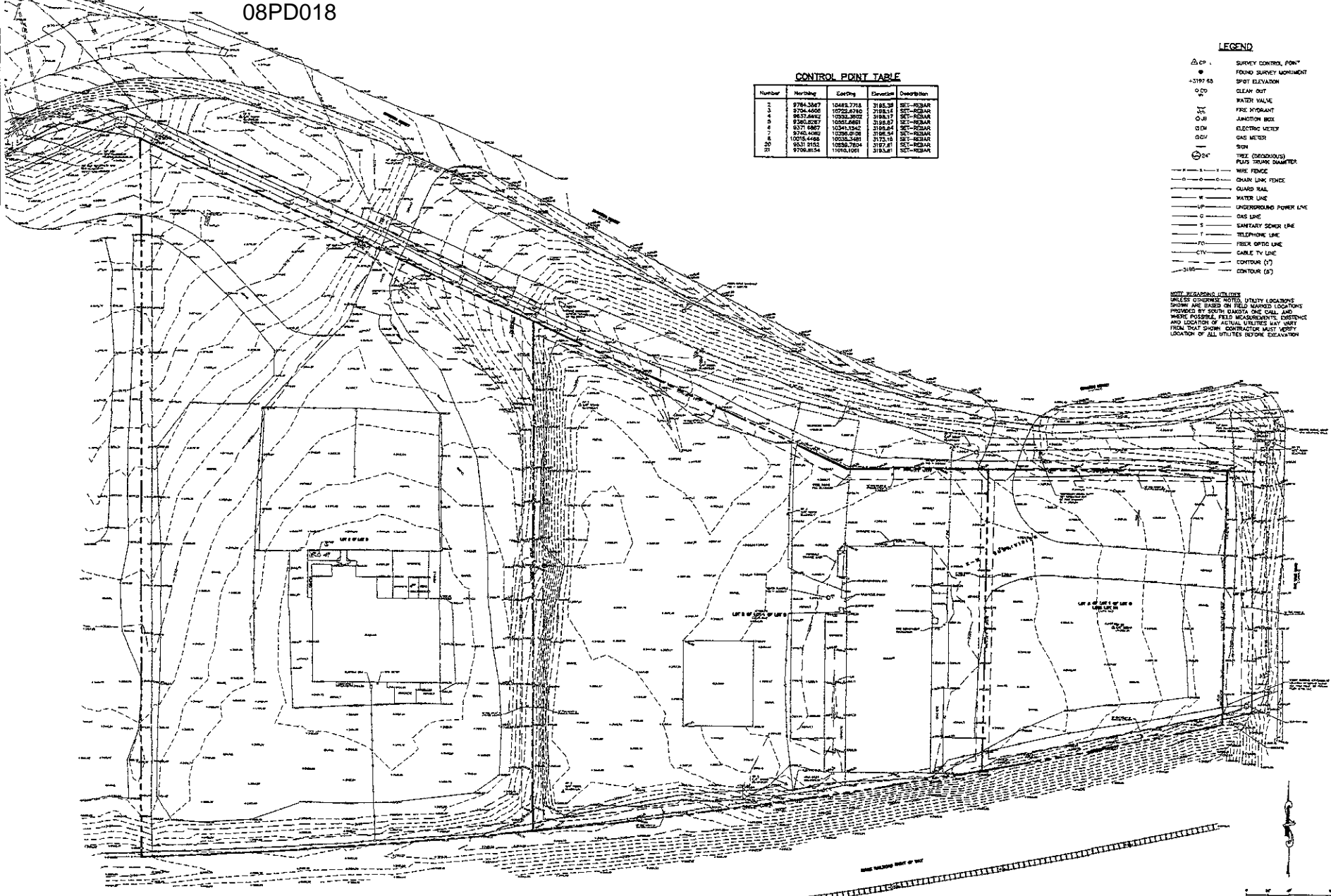
CONTROL POINT TABLE

Number	Horising	Elev	Descr	Description
1	9784.3267	10443.2713	3188.35	SET-REBAR
2	9794.4406	10722.4740	3188.14	SET-REBAR
3	9873.6462	10336.3057	3188.12	SET-REBAR
4	9360.8287	10361.6861	3188.87	SET-REBAR
5	9371.6867	10341.8342	3188.84	SET-REBAR
6	9740.4082	10398.0708	3188.54	SET-REBAR
7	10716.4484	10335.3481	3173.18	SET-REBAR
8	9531.2152	10582.7824	3197.47	SET-REBAR
9	9706.8154	10901.1051	3183.67	SET-REBAR

LEGEND

- △ CP 1 SURVEY CONTROL POINT
- ⊙ FIRM SURVEY POINT
- ± SPOT ELEVATION
- CLEAN CUT
- WATER VALVE
- FIRE HYDRANT
- JUNCTION BOX
- ELECTRIC METER
- GAS METER
- SIGN
- TREE (CIRCULOUS)
- PULS TRUNK SHAMTER
- WIRE FENCE
- CHAIN LINK FENCE
- GUARD RAIL
- WATER LINE
- UNDERGROUND POWER LINE
- GAS LINE
- SANITARY SEWER LINE
- TELEPHONE LINE
- FIBER OPTIC LINE
- CABLE TV LINE
- CONTOUR (1')
- CONTOUR (5')

NOTE: REGARDING UTILITIES UNLESS OTHERWISE NOTED, UTILITY LOCATIONS SHOWN ARE BASED ON FIELD MARKED LOCATIONS PROVIDED BY SOON GANER, CHAL AND WHERE POSSIBLE, FIELD MEASUREMENTS, DISTANCE AND LOCATION OF ACTUAL UTILITIES MAY VARY FROM THAT SHOWN. CONTRACTOR MUST VERIFY LOCATION OF ALL UTILITIES BEFORE EXCAVATION.



**FMG, Inc.**  
 2700 Struble Road  
 Rapid City, SD 57701  
 (605) 342-7100 FAX (605) 342-4222  
 www.fmg-engineering.com



**NOT FOR CONSTRUCTION**

File Number: 2008-0001  
 Location: SE 1/4, SECTION 28, T24N, R8E, J4W  
 Surveyed by: M. J. J. / M. J. J.  
 Date: SEPTEMBER, 2008  
 Drawn by: C. J. J. / C. J. J.  
 Checked by: J. J. J. / J. J. J.

**FINAL PLANNED DEVELOPMENT PLAN  
 COMFORT SUITES  
 RAPID CITY, SD**

Revision / Date  
 Sheet Name:  
**EXISTING TOPOGRAPHIC MAP**  
 Sheet Number:  
 03 of 02