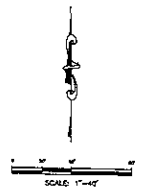


PARKING REQUIREMENTS
 HOTEL: 83 ROOMS x 1 STALL/ROOM = 83 STALLS
 CONFERENCE ROOM: 3863 SF x 30 STALLS/1000 SF = 72 STALLS
 TOTAL REQUIRED = 155 STALLS
 TOTAL PROVIDED = 170 STALLS
 TOTAL ADA REQUIRED = 6 STALLS
 TOTAL ADA PROVIDED = 6 STALLS



FMG, Inc.
 8700 Shady Side Blvd
 Rapid City, SD 57705-0317
 (605) 348-4108 FAX (605) 348-4822
 www.fmgengineering.com



NOT FOR CONSTRUCTION

File Number: 2536
 Location: SE 1/4 SECTION 28 T2N, R9E, S9W
 Surveyed By: JMT/TF
 Date: SEPTEMBER 2008
 Designed By: ESK/MS
 Drawn By: ESK/MS
 Checked By: JMT

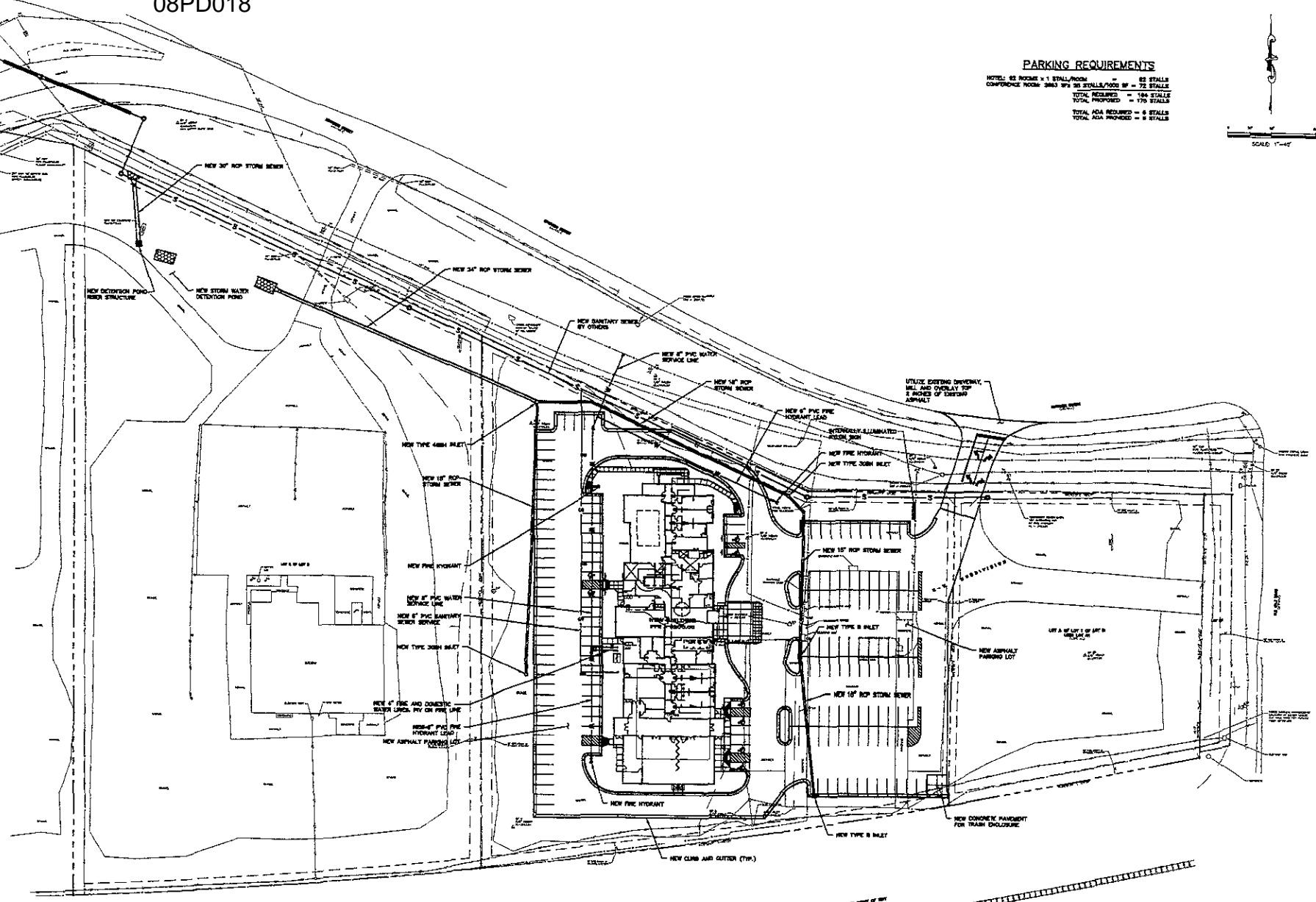
**FINAL PLANNED DEVELOPMENT PLAN
 COMFORT SUITES
 RAPID CITY, SD**

Plan/Sheet / Date
 Sheet Name

OVERALL LAYOUT PLAN

Sheet Number

C3 of C8



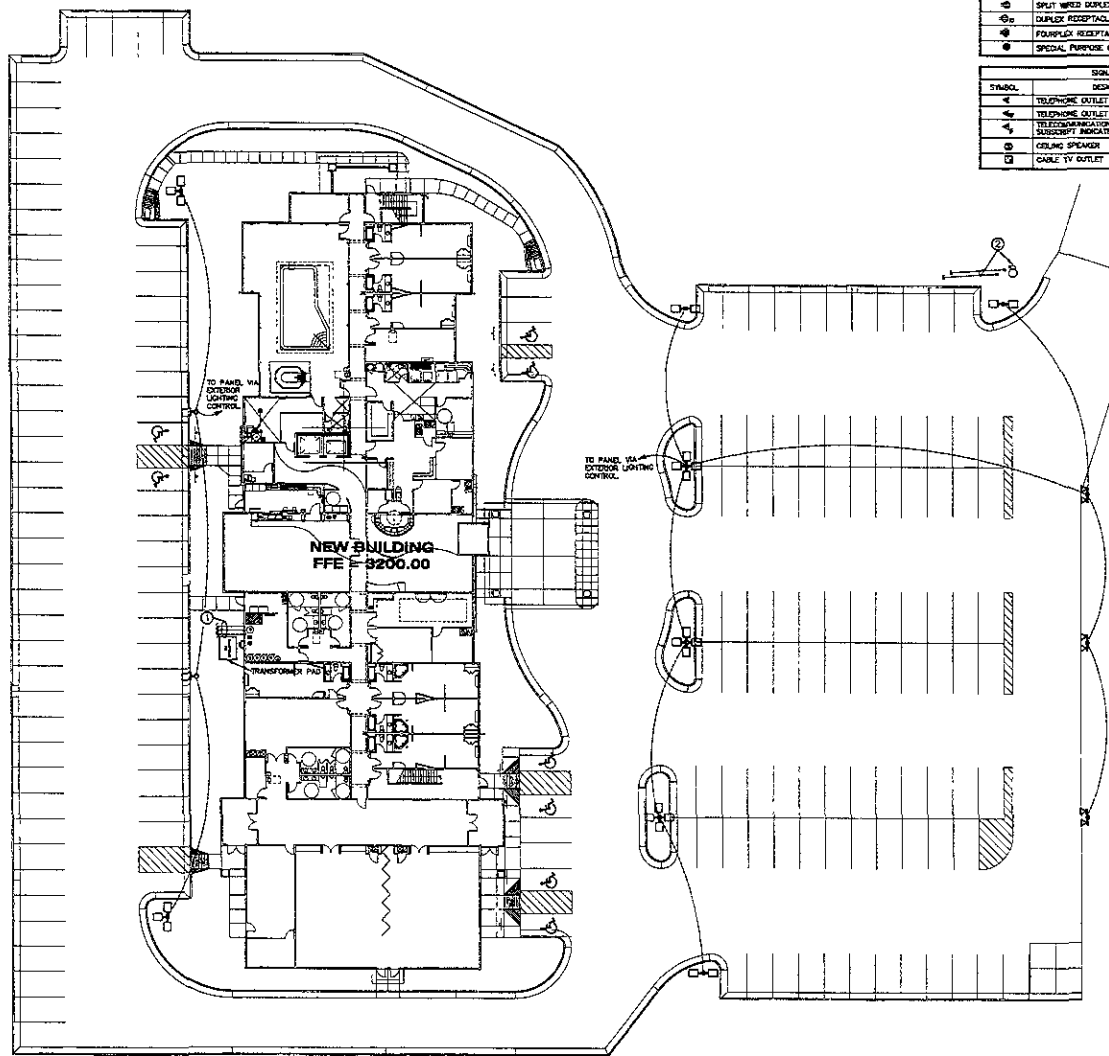
CONDUIT SYMBOLS		
SYMBOL	DESCRIPTION	NOTES
	CONCEALED CONDUIT OR CABLING	
	BELOW GRADE	
	CONDUIT INSTALLED INTO CEILING SPACE WITH BUSHED END	
CONTINUATION		
	1000V PANEL MARK 1 INDICATES PANEL	
	1000V PANEL MARK 2 INDICATES PANEL	
	UNLESS OTHERWISE INDICATED EACH CROSS HASH DENOTES ONE #2 CONDUCTOR, NO CROSS HASH DENOTES 2 #2 CONDUCTORS, LONGER CROSS HASH DENOTES NEUTRAL CONDUCTOR, 1 INDICATES DROPPING CONDUCTOR	
	JUNCTION BOX	
	FLOOR BOX	

POWER SYMBOLS		
SYMBOL	DESCRIPTION	NOTES
	DISCONNECT	
	MOTOR	
	MOTOR RATED SWITCH	4"
	RELAY	
	CONDUCTOR	
	DUPLEX RECEPTACLE	1"
	SPLIT METER DUPLEX RECEPTACLE	1 1/2"
	DUPLEX RECEPTACLE - ISOLATED GROUND	1"
	FOURPLEX RECEPTACLE	1 1/2"
	SPECIAL PURPOSE OUTLET OR CONNECTION	1 1/2"

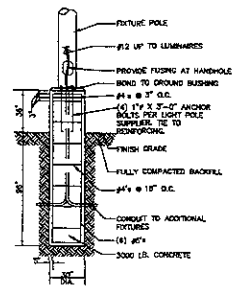
SIGNAL SYMBOLS		
SYMBOL	DESCRIPTION	NOTES
	TELEPHONE OUTLET	1 1/2"
	TELEPHONE OUTLET - WALL MOUNTED	4"
	TELECOMMUNICATIONS OUTLET	1 1/2"
	CEILING SPEAKER	
	CABLE TV OUTLET	VERIFY

FIRE ALARM SYMBOLS		
SYMBOL	DESCRIPTION	NOTES
	MANUAL STATION	4"
	HEAT DETECTOR - FIXED TEMPERATURE	VERIFY
	SMOKE DETECTOR - PHOTOELECTRIC	VERIFY
	SMART SMOKE DETECTOR	
	REMOTE INDICATION LAMP	VERIFY
	FLOW SWITCH	
	TAMPER SWITCH	
	STROBE RELAY	
	STROBE SIREN CHIME	
	DOOR HOLDER	VERIFY
	STROBE - SUSSCRIPTOR INDICATES CANOLLA	8"
	HORN	8"
	HORN AND STROBE - SUSSCRIPTOR INDICATES CANOLLA	8"

LIGHTING SYMBOLS		
SYMBOL	DESCRIPTION	NOTES
	TYPICAL FIXTURE DESIGNATION	
	FIXTURE DESIGNATION	
	SWITCH PATTERN	
	FLUORESCENT FIXTURE	
	STRIP FLUORESCENT FIXTURE	VARIES
	CEILING FIXTURE	
	CEILING FIXTURE WITH WALL WASH LIGHT	
	WALL FIXTURE	VERIFY
	WALL FIXTURE WITH WALL WASH LIGHT	
	SINGLE FACE EXIT SIGN	6"
	DOUBLE FACE EXIT SIGN	CLD
	BATTERY POWERED EMERGENCY LIGHT	8"
	EMERGENCY LIGHT	
	EMERGENCY LIGHT WITH EMERGENCY LIGHT INDICATOR	4"
	THREE WAY	4"
	FOUR WAY	4"
	SWITCH LEGEND CASE LETTER DENOTES SWITCHING PATTERN	4"
	DIMMER	4"
	PHOTO ELECTRIC CELL	VERIFY



- PLAN NOTES.**
- ① (3) 3" PVC FROM THE TELECOMMUNICATIONS EQUIPMENT ROOM TO THE UTILITY EASEMENT
 - ② APPROXIMATE LOCATION OF SITE SIGN PROVIDE (4) #1. GND IN 1-1/2" CONDUIT FOR POWER AND AN 1-1/4" CONDUIT FOR TELECOMMUNICATIONS CABLING. VERIFY LOCATION WITH THE OWNER PROVIDE A 60A, NP, NF DISCONNECT AT THE SIGN



TYPICAL POLE BASE DETAIL
NO SCALE

ARCHITECTURAL GROUP III
201 S. Wappesee St. Elkhart, Indiana 46514 • 571/291-0008

JOB TITLE

COMFORT SUITES
RAPID CITY, SOUTH DAKOTA
A NEW 60 ROOM HOTEL
FOR HILLCREST DEVELOPMENT, INC

JOB NO.
06124

DATE
04/23/08

REVISIONS

PRELIMINARY NOT FOR CONSTRUCTION

SHEET NO.
E1.1

ELECTRICAL SITE PLAN, LEGEND