

FINAL PLANNED DEVELOPMENT PLAN

08PD018

COMFORT SUITES

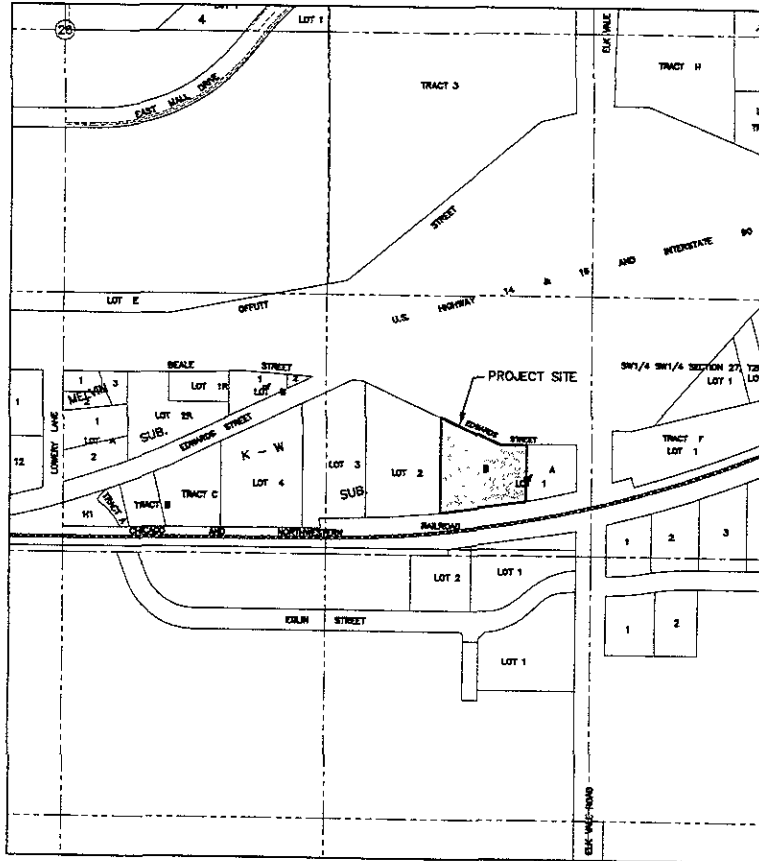
RAPID CITY, SOUTH DAKOTA

APRIL 2008

RECEIVED

APR 25 2008

Rapid City Growth
Management Department



VICINITY MAP
SCALE: 1"=200'

LEGAL DESCRIPTION

LOT B OF LOT 1 OF LOT D OF K-W SUBDIVISION,
SECTION 28, T2N, R8E, S1/4, PENNINGTON COUNTY,
RAPID CITY, SOUTH DAKOTA

DESCRIPTION OF PLANNED DEVELOPMENT

THIS SITE IS PROPOSED TO BE DEVELOPED AS A
GENERAL COMMERCIAL PROPERTY WITH A NEW HOTEL.

DEVELOPER CONTACT

HEINSEL DEVELOPMENT, LLC
ATTN: RON HEINIS
4081 VALLEY DRIVE WEST
RAPID CITY, SD 57702
PHONE: (605)484-0073

INDEX OF SHEETS

- C1 TITLE SHEET
- C2 EXISTING TOPOGRAPHIC MAP
- C3 OVERALL LAYOUT PLAN
- C4 PARKING LAYOUT PLAN
- C5 OVERALL GRADING PLAN
- C6 PARKING GRADING PLAN
- C7 STORM WATER DETENTION POND PLAN
- C8 CIVIL SITE DETAILS
- L1 OVERALL LANDSCAPE PLAN
- L2 PARKING LANDSCAPE PLAN
- A2.1 EXTERIOR ELEVATIONS
- A2.2 EXTERIOR ELEVATIONS
- E1.1 ELECTRICAL SITE PLAN

FMG, Inc.
3700 Blunga Road
Rapid City, SD 57702-0317
(605) 342-4100 FAX (605) 346-1922
www.fmgengineering.com



NOT
FOR
CONSTRUCTION

| | |
|-------------|--------------------|
| File Number | 5335 |
| Location | SE 1/4, SECTION 28 |
| Scale | 1"=200' |
| Surveyed By | JK/T |
| Date | SEPTEMBER 2008 |
| Designed By | CEK |
| Drawn By | CK/JJK |
| Checked By | ADP |

FINAL PLANNED DEVELOPMENT PLAN
COMFORT SUITES
RAPID CITY, SD

Revision / Date

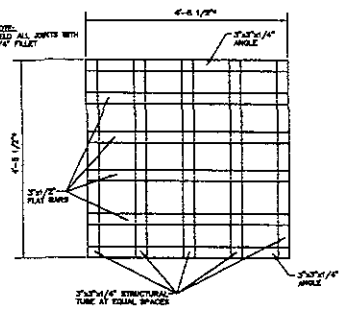
Sheet Name:

TITLE SHEET

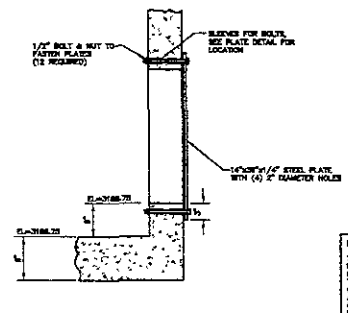
Sheet Number:

NOTE:
PART GRATE FOR SECTION
14.3 OF STANDARD SPECIFICATIONS
ADJUST GRATE TO FIT TOP GROOVES OF IRON

08PD018

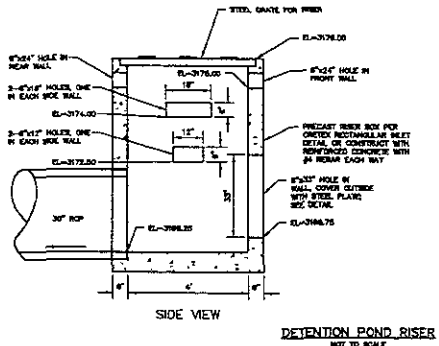


GRATE DETAIL FOR INLET RISER BOX
NOT TO SCALE

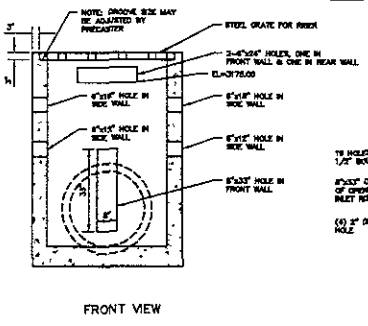


STEEL PLATE ANCHORING DETAIL
SCALE: 1 1/2"=1'-0"

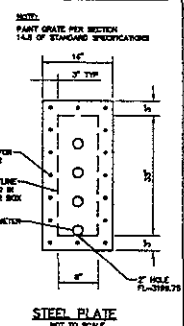
NOTE: GRATING OVER PLATE
THE STEEL PLATE PROVIDED WITH THIS PROJECT IS NOT INTENDED TO BE THE COVERING SOURCE FOR THE FUTURE EXTENDED DETENTION ESTIMATED TREATMENT SYSTEM. FROM SECTIONS OF STEEL PLATE COVERING PLATE WHICH WILL BE ON THE INSIDE WALL AND THE STEEL TYPAN WALL PLATE WHICH WILL BE ON THE OUTSIDE WALL IS NECESSARY IN THE FUTURE WHEN THE FLOW IS CONNECTED TO THE EXTENDED DETENTION SYSTEM. THE PURPOSE OF THE STEEL PLATE WITH THIS PROJECT IS ONLY TO DRAW THE LOWER STAGE OF THE POND. SEE THE DRAINAGE DESIGN REPORT FOR FURTHER INFORMATION.



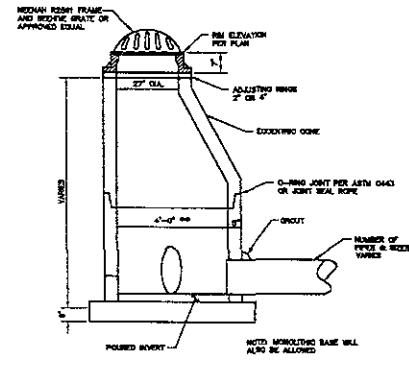
DETECTION POND RISER
NOT TO SCALE



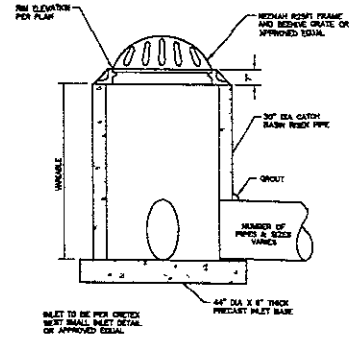
FRONT VIEW



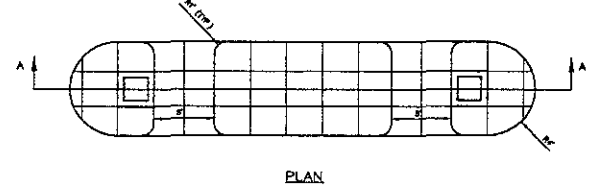
STEEL PLATE
NOT TO SCALE



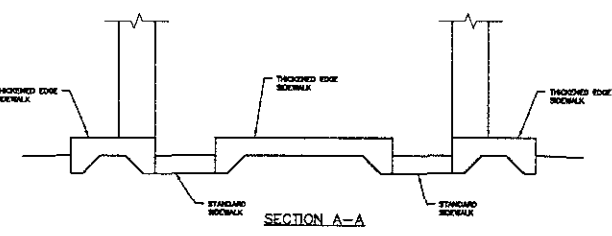
TYPE 48BH STORM SEWER MANHOLE
NOT TO SCALE



TYPE 30BH STORM SEWER INLET
NOT TO SCALE

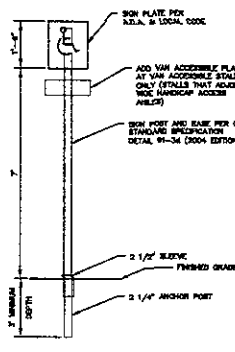


PLAN

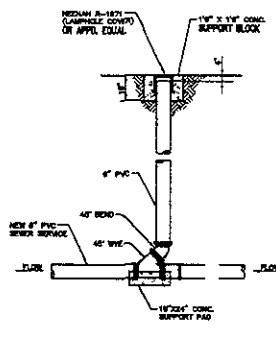


SECTION A-A

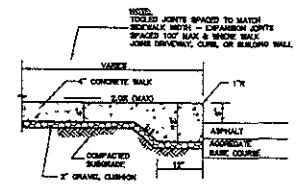
SIDEWALK ISLAND
SCALE: 1"=1'-0"



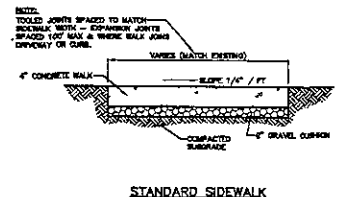
HANDICAP SIGN - LAWN AREA
NOT TO SCALE



SEWER CLEANOUT DETAIL
NOT TO SCALE



THICKENED EDGE SIDEWALK
NOT TO SCALE



STANDARD SIDEWALK
NOT TO SCALE

FMG, Inc.
3700 Parkway Blvd. #1702-0317
(800) 842-4108 FAX (808) 343-6222
www.fmg-engineering.com

NOT FOR CONSTRUCTION

File Number: 2505
Location: SE 1/4 SECTION 28 T2N, R1E, S1W
Surveyed by: MW/JT
Drawn by: CJK
Checked by: JSP

FINAL PLANNED DEVELOPMENT PLAN
COMFORT SUITES
RAPID CITY, SD

Revision / Date
Sheet Name
CIVIL SITE DETAILS
Sheet Number
C8 of C8