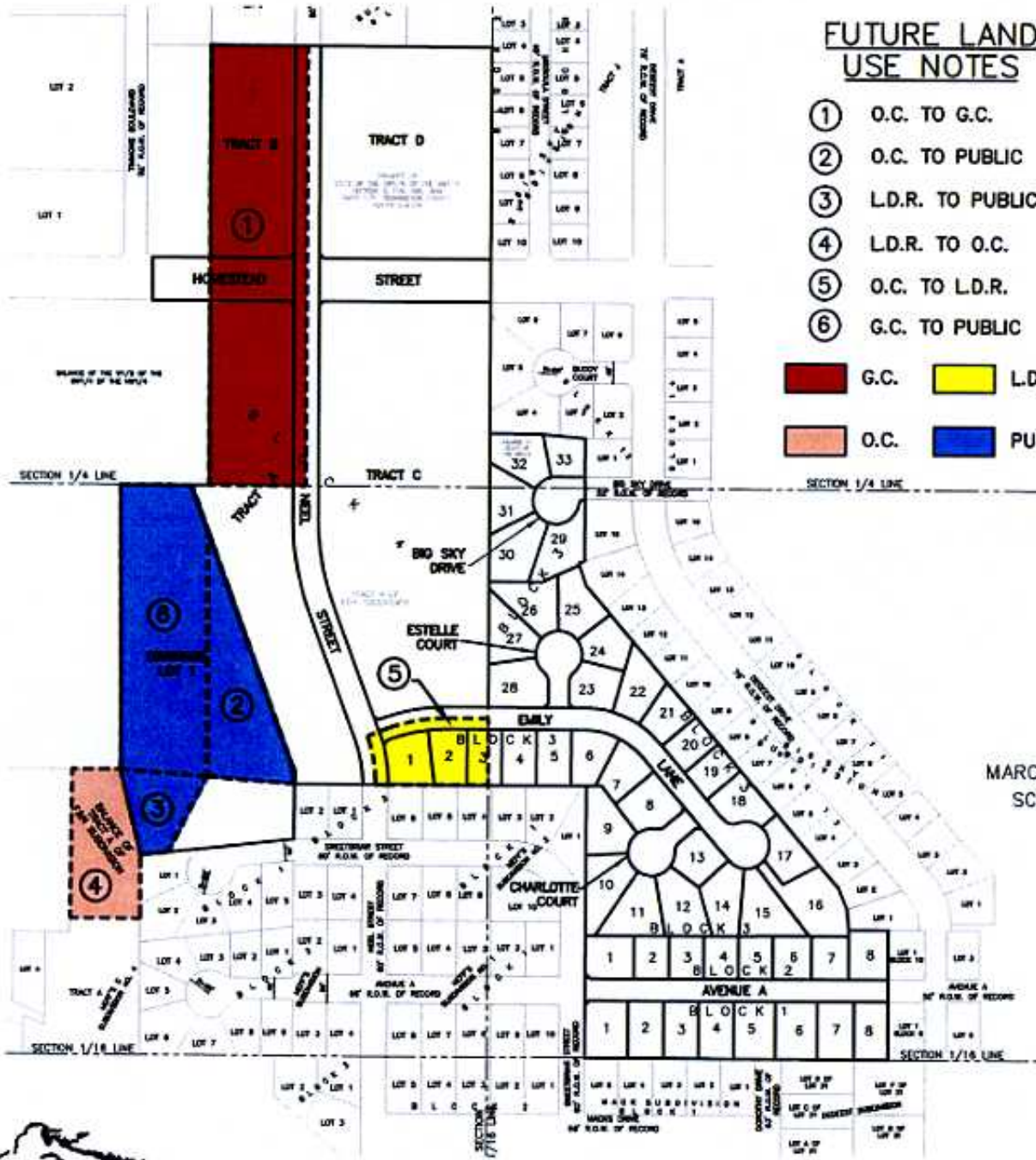


**FUTURE LAND USE MAP OF**  
**LOTS 1-8 OF BLOCK 1; LOTS 1-8 OF BLOCK 2; LOTS 1-33 OF BLOCK 3;**  
**TRACTS A, B, C, & D OF BLOCK 4; & DRAINAGE LOT 1,**  
**HOMESTEAD PLAZA SUBDIVISION**  
**AND DEDICATED RIGHT-OF-WAY OF AVENUE A, BIG SKY DRIVE, CHARLOTTE COURT,**  
**EMILY LANE, ESTELLE COURT, HOMESTEAD STREET, & NEEL STREET**  
 (formerly A Portion of Tract A of F&N Subdivision, Balance of the E1/2 of the SW1/4 of the NW1/4,  
 & Balance of the SE1/4 of the NW1/4)  
 LOCATED IN THE S1/2 OF THE NW1/4 &  
 IN THE N1/2 OF THE SW1/4  
 SECTION 3, T1N, R8E, BHM  
 RAPID CITY, PENNINGTON COUNTY, SOUTH DAKOTA



**FUTURE LAND USE NOTES**

- ① O.C. TO G.C.
  - ② O.C. TO PUBLIC
  - ③ L.D.R. TO PUBLIC
  - ④ L.D.R. TO O.C.
  - ⑤ O.C. TO L.D.R.
  - ⑥ G.C. TO PUBLIC
- |  |      |  |        |
|--|------|--|--------|
|  | G.C. |  | L.D.R. |
|  | O.C. |  | PUBLIC |

MARCH 28, 2008  
SCALE: NTS



**Renner & Associates, LLC.**

616 Sixth St. • Rapid City, SD 57701 • 605/721-7310  
 FAX: 605/721-7313 • E-MAIL: Gary@RennerAssoc.com  
 • Spearfish 605/717-0016 •