

# LOTS 2A, 2B, AND 2C, BLOCK 3 OF, RUSHMORE CROSSING

(formerly Lots 2 and 3, Block 3 of Rushmore Crossing)

LOCATED IN THE S1/2 OF THE SW1/4,

SECTION 29, T2N, R8E, BHM

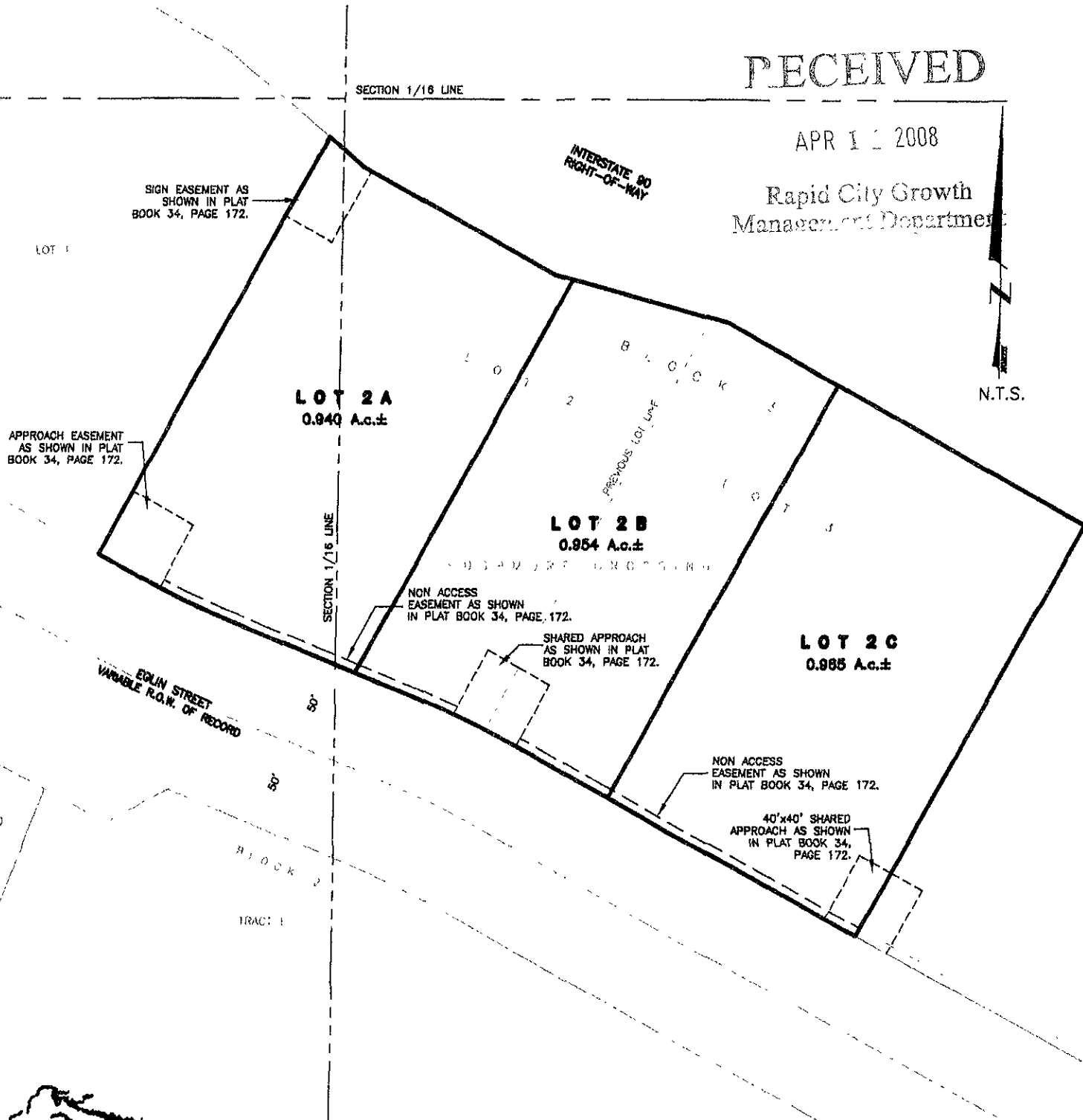
RAPID CITY, PENNINGTON COUNTY, SOUTH DAKOTA

## RECEIVED

APR 11 2008

Rapid City Growth  
Management Department

N.T.S.



### Renner & Associates, LLC.

616 Sixth St. \* Rapid City, SD 57701 \* 605/721-7310

FAX: 605/721-7313 \* E-MAIL: Gary@RennerAssoc.com

\* Spearfish 605/717-0016 \*



CITY HALL 1903