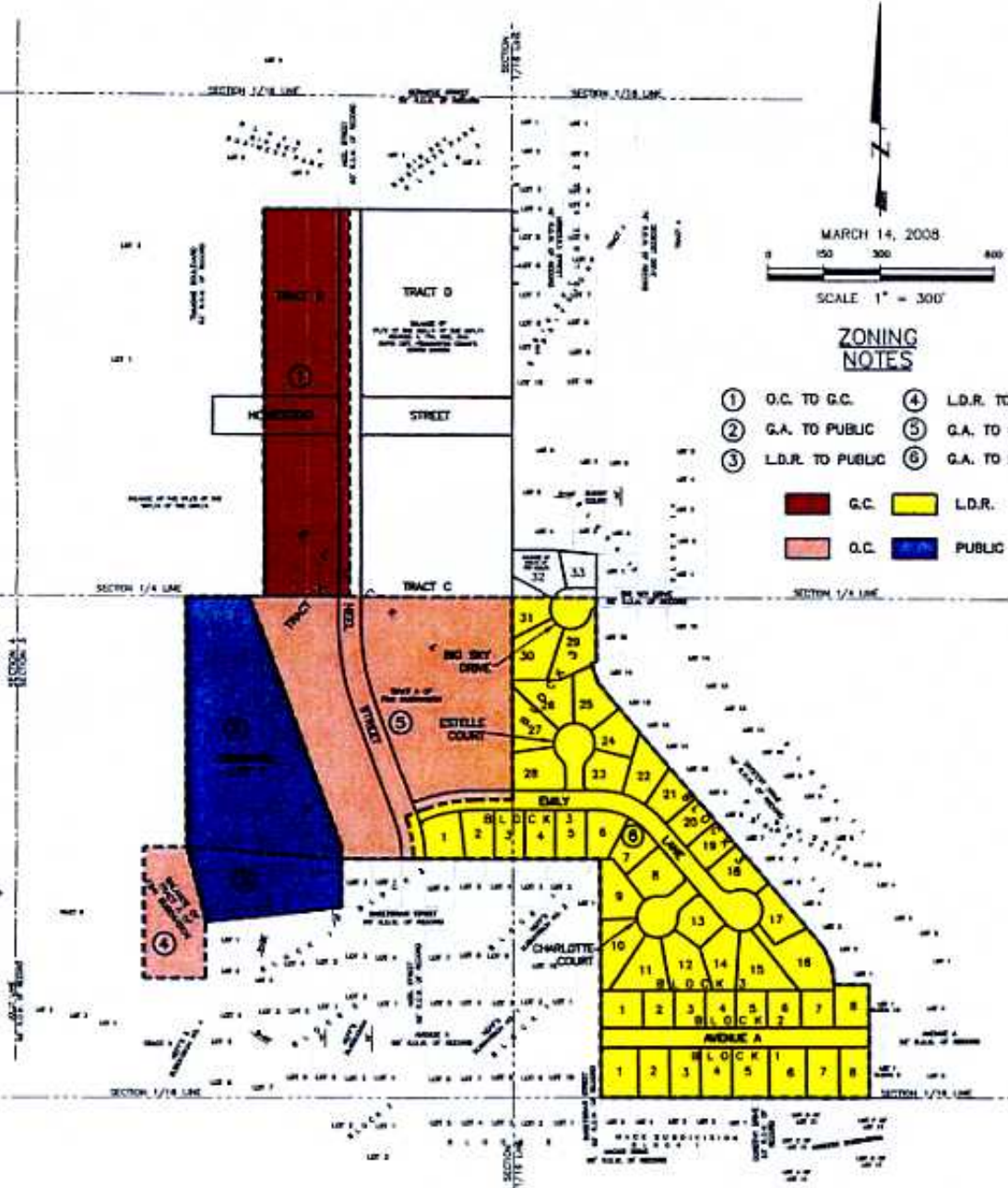


08RZ012

FUTURE ZONING MAP OF
**LOTS 1-8 OF BLOCK 1; LOTS 1-8 OF BLOCK 2; LOTS 1-33 OF BLOCK 3;
 TRACTS A, B, C, & D OF BLOCK 4; & DRAINAGE LOT 1,
 HOMESTEAD PLAZA SUBDIVISION
 AND DEDICATED RIGHT-OF-WAY OF AVENUE A, BIG SKY DRIVE, CHARLOTTE COURT,
 EMILY LANE, ESTELLE COURT, HOMESTEAD STREET, & NEEL STREET**
 (formerly A Portion of Tract A of F&N Subdivision, Balance of the E1/2 of the SW1/4 of the NW1/4,
 & Balance of the SE1/4 of the NW1/4)
 LOCATED IN THE S1/2 OF THE NW1/4 &
 IN THE N1/2 OF THE SW1/4
 SECTION 3, T1N, R8E, BHM
 RAPID CITY, PENNINGTON COUNTY, SOUTH DAKOTA



ZONING NOTES

- ① O.C. TO G.C.
 - ② G.A. TO PUBLIC
 - ③ L.D.R. TO PUBLIC
 - ④ L.D.R. TO O.C.
 - ⑤ G.A. TO O.C.
 - ⑥ G.A. TO L.D.R.
- | | | | |
|--|------|--|--------|
| | G.C. | | L.D.R. |
| | O.C. | | PUBLIC |



Renner & Associates, LLC.

616 Sixth St. • Rapid City, SD 57701 • 605/721-7310
 FAX: 605/721-7313 • E-MAIL: Gary@RennerAssoc.com
 • Spearfish 605/717-0016 •