

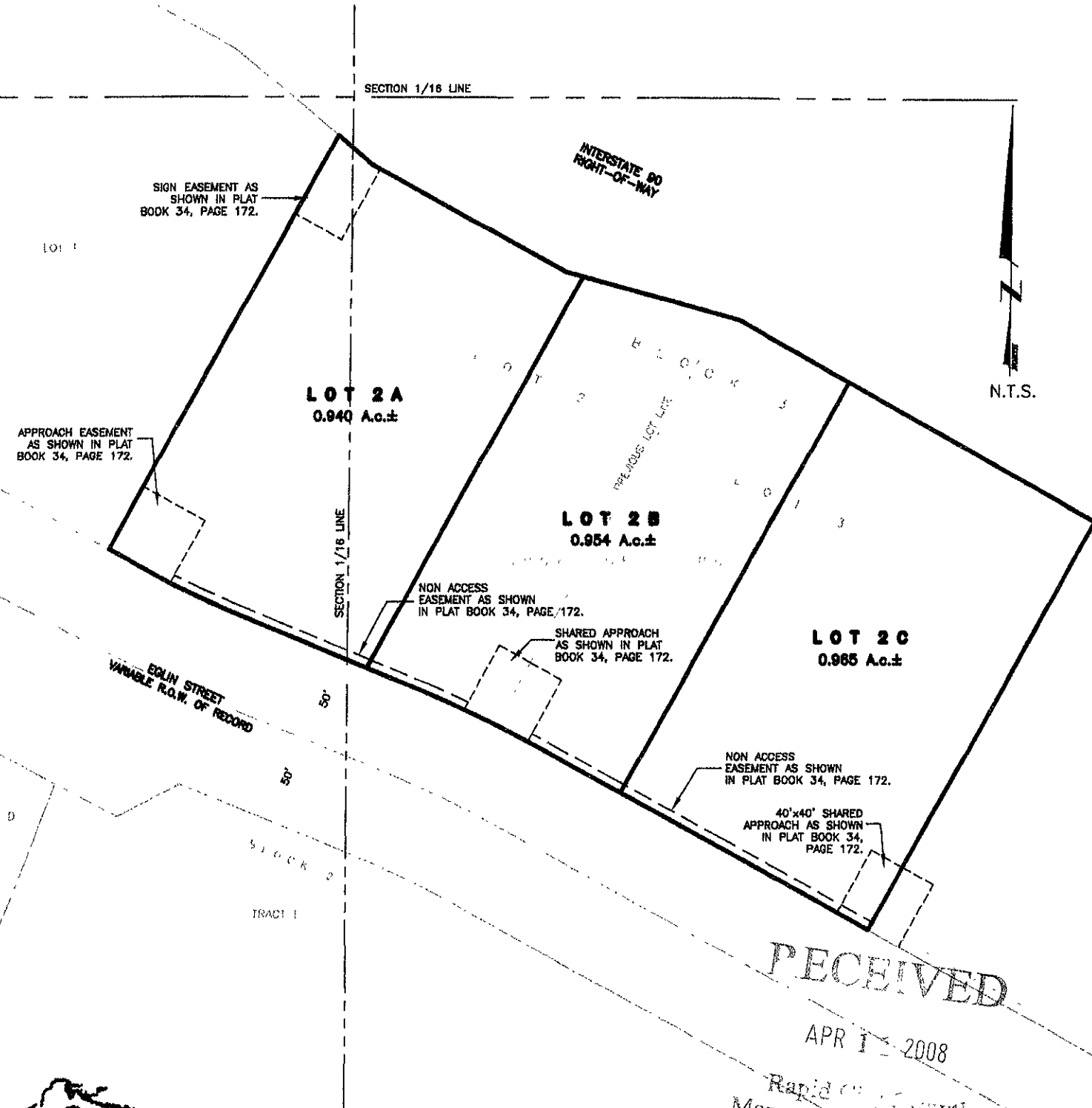
LOTS 2A, 2B, AND 2C, BLOCK 3 OF, RUSHMORE CROSSING

(formerly Lots 2 and 3, Block 3 of Rushmore Crossing)

LOCATED IN THE S1/2 OF THE SW1/4,

SECTION 29, T2N, R8E, BHM

RAPID CITY, PENNINGTON COUNTY, SOUTH DAKOTA



RECEIVED

APR 11 2008

Rapid City Growth Management Department

Renner & Associates, LLC.

616 Sixth St. * Rapid City, SD 57701 * 605/721-7310
 FAX: 605/721-7313 * E-MAIL: Gary@RennerAssoc.com
 * Spearfish 605/717-0016 *



CITY HALL 1903