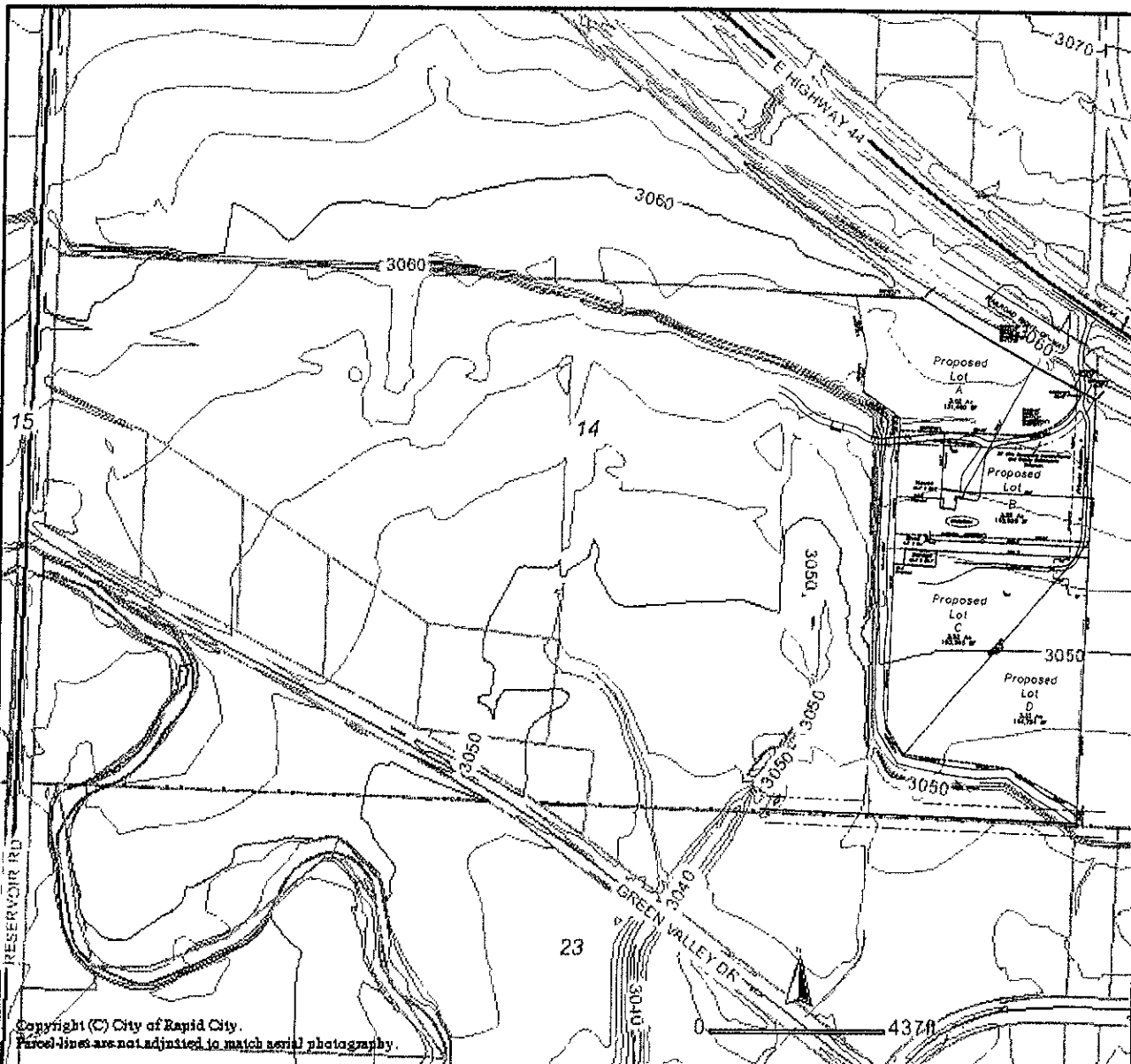


TOPOGRAPHIC MAP

**Lots A, B, C & D of Clemmons Addition
located in (and formerly a portion of) the balance of
Lot 3 of the S ½ SW ¼, Section 14, T1N, R8E, BHM,
Pennington County, South Dakota**



Copyright (C) City of Rapid City.
Parcel lines are not adjusted to match aerial photography.