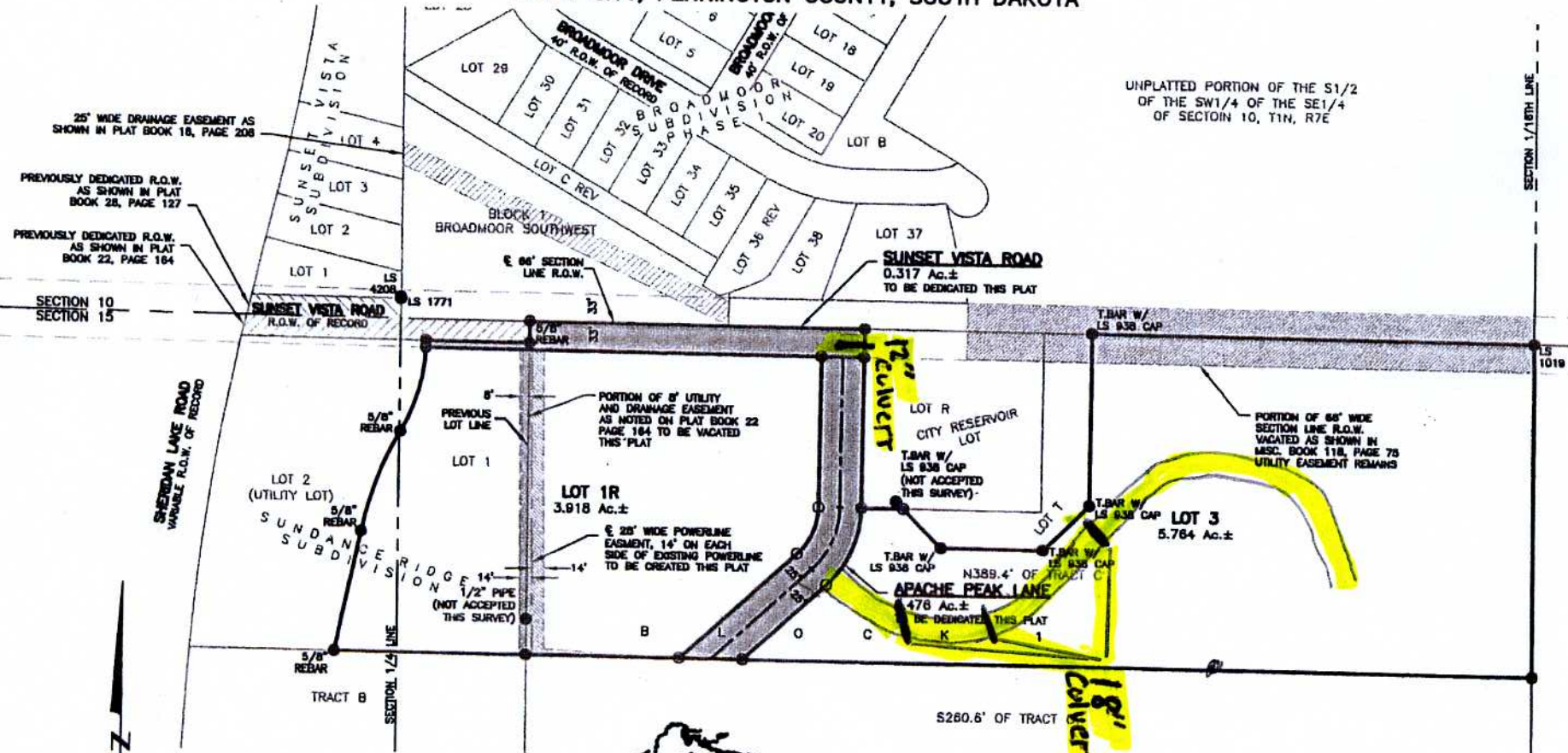


PLAT OF LOT 1R AND LOT 3 OF BLOCK 1, SUNDANCE RIDGE SUBDIVISION, AND DEDICATED RIGHT-OF-WAY OF SUNSET VISTA ROAD AND APACHE PEAK LANE

(formerly Lot 1 of Block 1, Sundance Ridge Subdivision &
N389.4' of Tract C of the NW1/4 of the NE1/4)
LOCATED IN THE NW1/4 OF THE NE1/4
& THE NE1/4 OF THE NW1/4
SECTION 15, T1N, R7E, BHM
RAPID CITY, PENNINGTON COUNTY, SOUTH DAKOTA



JANUARY 23, 2008
SCALE: NTS



Renner & Associates, LLC.

616 Sixth St. * Rapid City, SD 57701 * 605/721-7310
FAX: 605/721-7313 * E-MAIL: Gary@RennerAssoc.com