

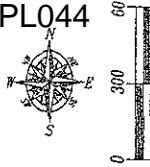
Plat of Lots 1 and 2 of U Lazy Two Ranch Estates Subdivision and Dedicated Right-of-Way

Located in (and formerly all of) that portion of the SE1/4 SW1/4 lying north of Nemo Road in Section 14, T2N, R6E, BHM, and; The N1/2 NE1/4 less Lot 1 of Barbara Subdivision, and the unplatted portion of the NE1/4 NW1/4 lying east of Nemo Road in Section 23, T2N, R6E, BHM, Pennington County, South Dakota

Prepared by
Flat Land Surveying &
Consulting Engineers, Inc
602 S. 10th Street
Rapid City, South Dakota 57709
605-348-5338
Project # 08-04-01

March 26, 2008

1" = 300'
Basis of Bearings
GPS Observation

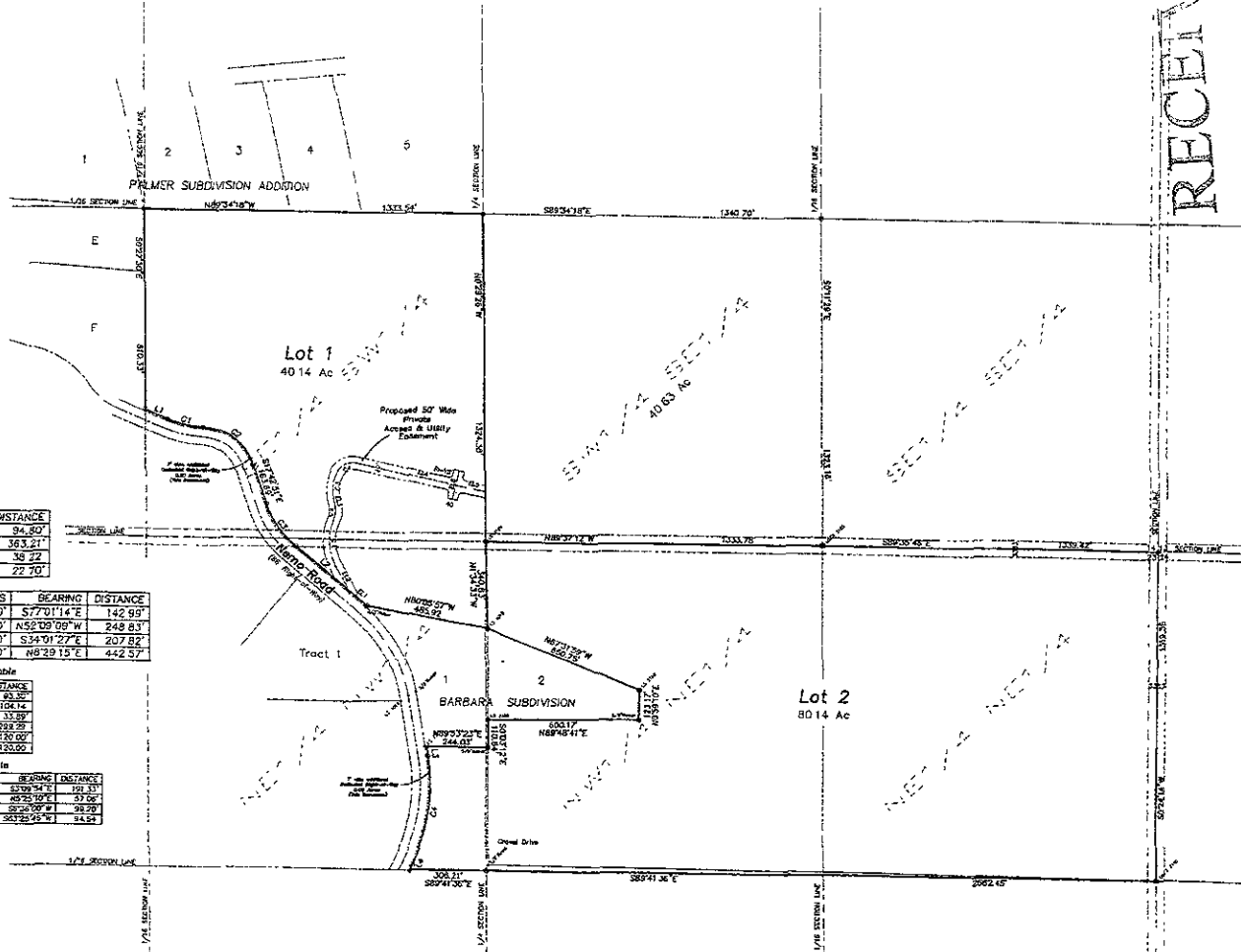


NUM	DELTA	ARC	RADIUS	BEARING	DISTANCE
CI	19°08'28"	143.63'	430.00'	S77°01'14"E	142.99'
C1	68°52'38"	264.47'	220.00'	N52°09'09"W	248.83'
C2	32°37'13"	210.65'	370.00'	S34°01'27"E	207.82'
C3	34°47'57"	449.43'	740.00'	N8°29'15"E	442.52'

NUM	BEARING	DISTANCE
E1	N20°00'00"W	43.30'
E2	N28°19'38"W	104.14'
E3	N11°09'37"W	33.89'
E4	S77°26'24"E	288.29'
E5	S77°29'58"E	130.00'
E6	S12°30'02"W	120.00'

NUM	DELTA	ARC	RADIUS	BEARING	DISTANCE
EC1	50°19'23"	197.82'	220.00'	S20°34'01"E	193.31'
EC2	12°09'16"	37.57'	100.00'	N25°10'01"E	37.06'
EC3	35°32'34"	100.82'	140.00'	S20°07'01"E	98.20'
EC4	76°08'55"	182.29'	250.00'	S63°22'45"W	144.54'

NUM	BEARING	DISTANCE
L1	N67°27'00"W	34.30'
L2	N50°20'04"W	363.21'
L3	S8°34'44"E	38.22'
L4	N28°53'13"E	22.70'



RECEIVED

MAR 26 2008
Rapid City