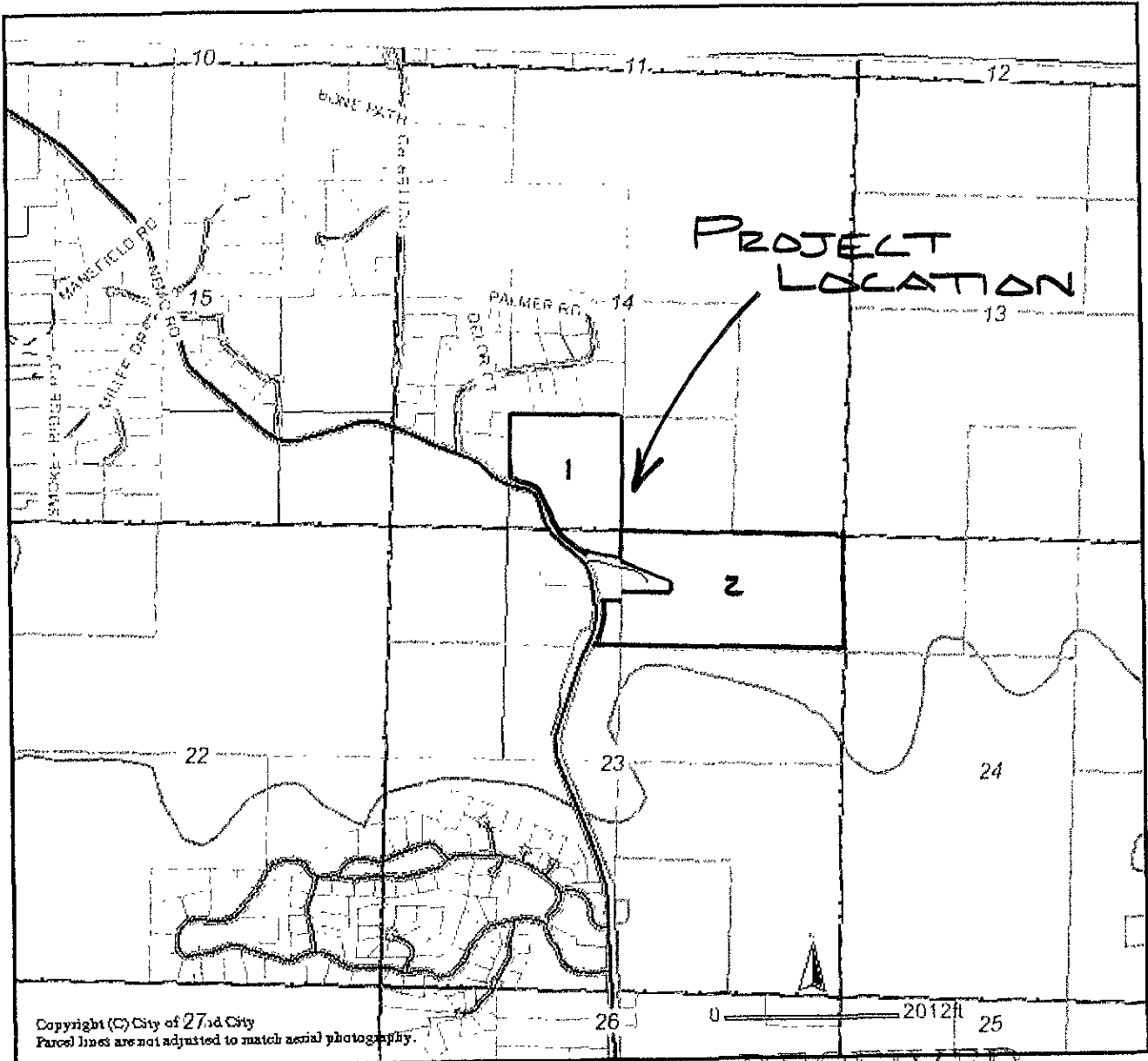


# VICINITY MAP

**Proposed Lots 1 and 2 of U Lazy Two Ranch Estates Subdivision,  
Located in Sections 14 and 23, T2N, R6E, BHM,  
Pennington County, South Dakota**



Copyright (C) City of 27<sup>th</sup> City  
Parcel lines are not adjusted to match aerial photography.

RECEIVED

MAR 20 2008

Rapid City Growth  
Management Department