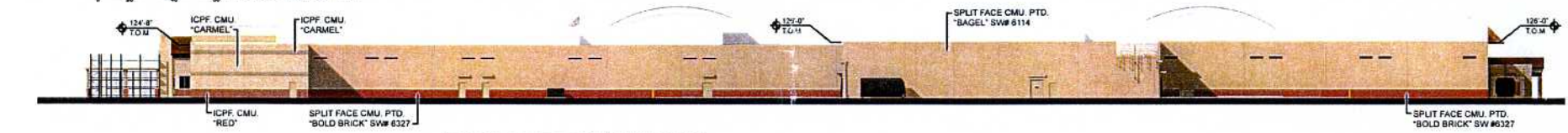




FRONT ELEVATION



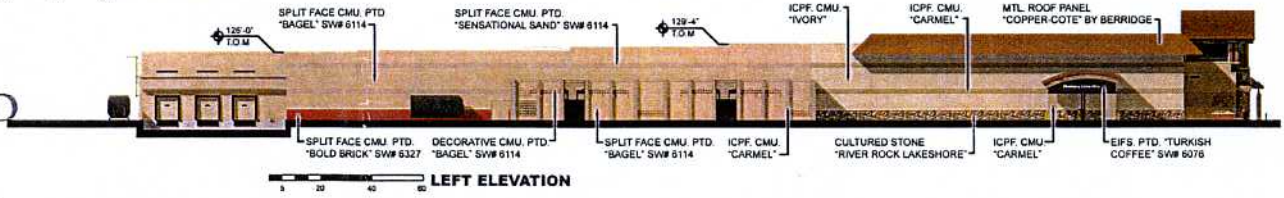
REAR ELEVATION

FRONT SIGNAGE	HEIGHT	AREA
1. "WAL-MART"	5'-0"	190.00 S.F.
2. "SUPERCENTER"	2'-0"	35.50 S.F.
3. "MARKET & PHARMACY"	2'-6"	102.74 S.F.
4. "HOME & LIVING"	2'-6"	72.59 S.F.
5. "OUTDOOR LIVING"	2'-6"	77.31 S.F.
TOTAL FRONT SIGNAGE		478.14 S.F.
PHARMACY SIGNAGE	HEIGHT	AREA
6. "PHARMACY DRIVE-THRU"	1'-0"	17.77 S.F.
7. "ENTER"	1'-0"	3.18 S.F.
8. "EXIT"	1'-0"	2.25 S.F.
TOTAL PHARMACY		23.20 S.F.
AUTO CENTER SIGNAGE	HEIGHT	AREA
9. "TIRE & LUBE"	2'-0"	27.10 S.F.
10. "LUBE (1)"	1'-0"	2.92 S.F.
11. "TIRE (2)"	1'-0"	4.56 S.F.
TOTAL AUTO CENTER		34.58 S.F.
TOTAL PROPOSED SIGNAGE		535.92 S.F.

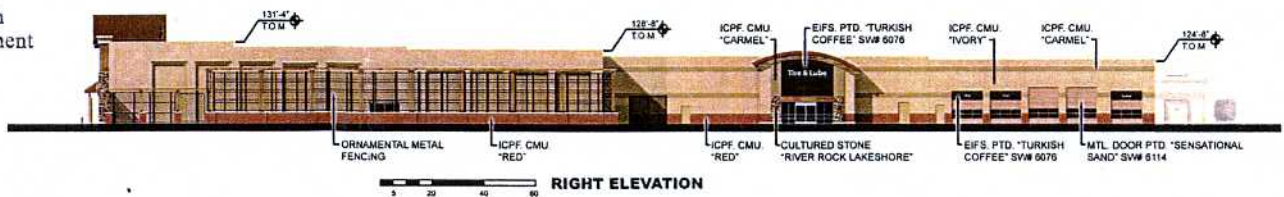
RECEIVED

FEB 11 2008

Rapid City Growth Management Department



LEFT ELEVATION



RIGHT ELEVATION

LATE SUBMITTAL
LAW/KINGDON, INC.
Architects • Engineers • Planners

- LEGEND**
- TOM = TOP OF MASONRY
 - MTL = METAL
 - EIFS = EXTERIOR INSULATION AND FINISH SYSTEM
 - PTD = PAINTED
 - SW = SHERWIN WILLIAMS
 - ICSF = INTERNAL COLORED SMOOTH FACE CMU
 - ICPF = INTERNAL COLORED SPLIT FACE CMU

REPRESENTATION ONLY
NOT FOR CONSTRUCTION
Building images shown are a representation of the design intent and may not reflect any subtle variations in color, material or construction that may occur due to local material differences and final design detailing

WAL-MART
SUPERCENTER

Rapid City (S), SD

#3872

01/22/08