

Project No.	
Client No.	
Drawn By	
Checked By	
Date	
Scale	
Sheet No.	
Total Sheets	

ROCKINON SUBDIVISION
PRD PHASE 2

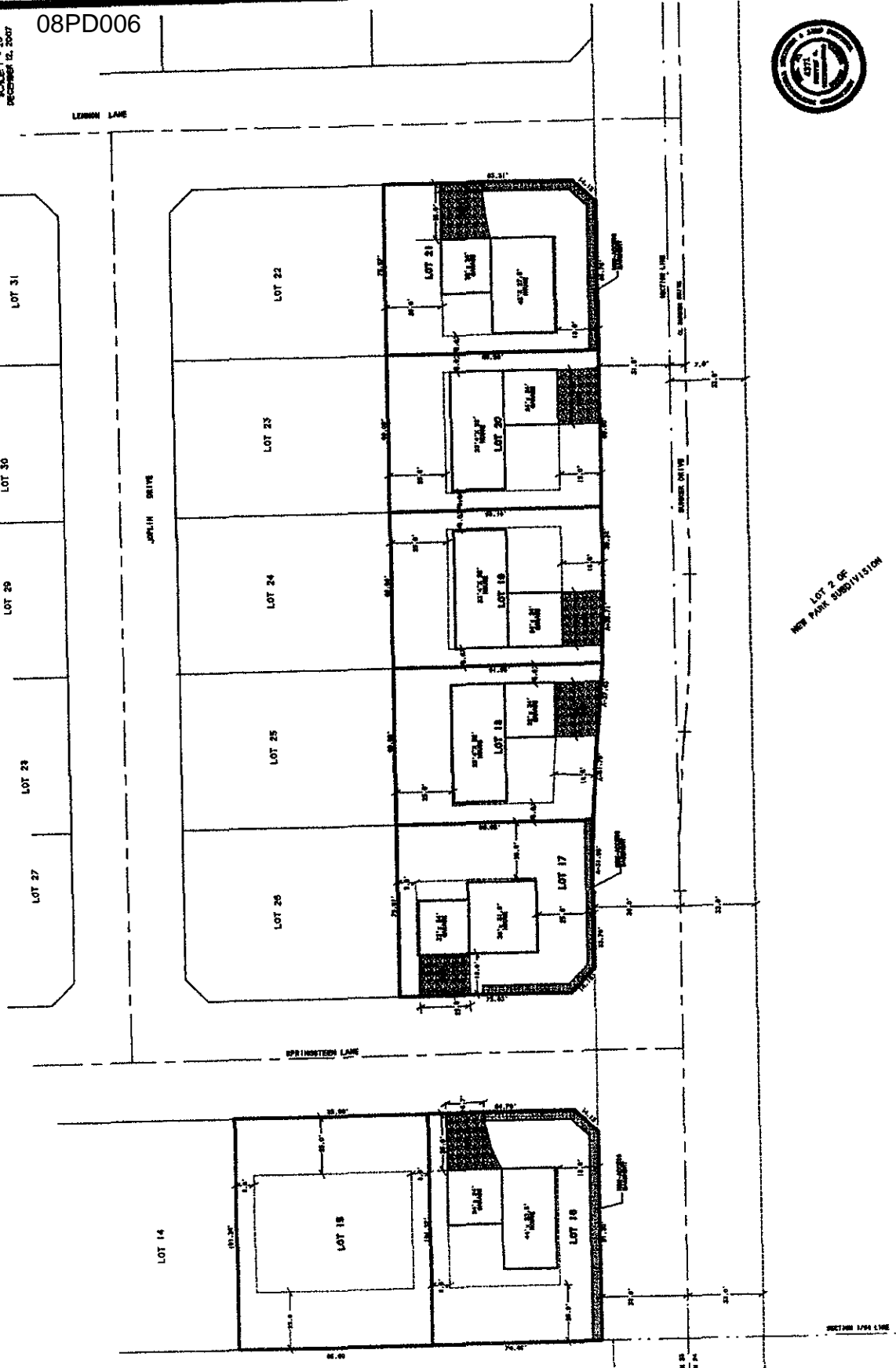
ROCKINON RANCH ESTATES
LOCATED IN THE N 1/2-NE 1/4-SE 1/4
SEC 23, T2N, R2E, B4M, RAPID CITY
PENNINGTON COUNTY, SOUTH DAKOTA

BRITTON ENGINEERING & LAND SURVEYING, INC
8035 BLACK HAWK ROAD, SUITE 5, PO BOX 649
BLACK HAWK, SD 57718
PH. (605) 716-7988

08PD006



SCALE: 1" = 20'
REVISION 02, 2007



LOT 2 OF
NEW PARK SUBDIVISION

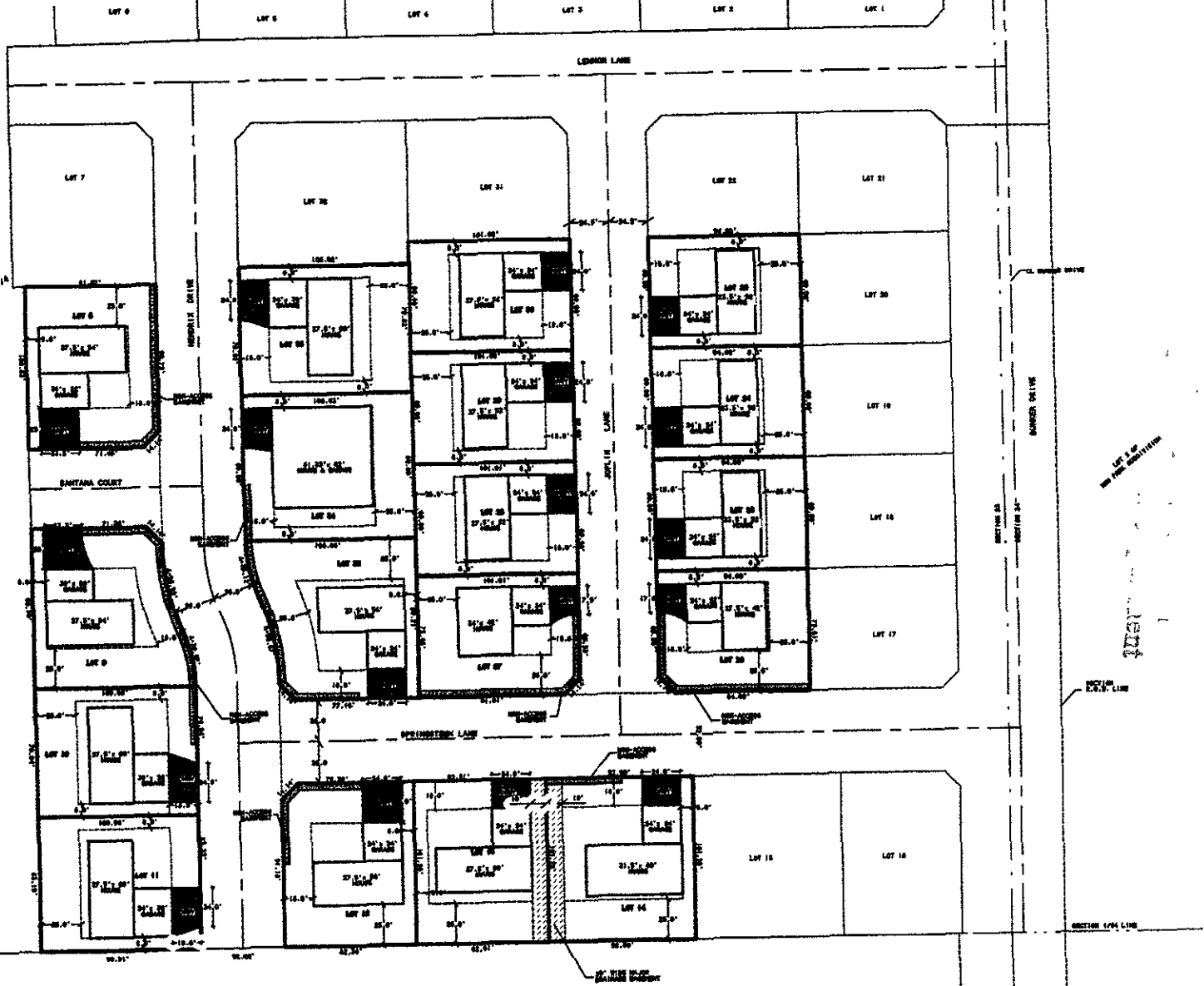
METEER LINE

SCALE: 1" = 30'
DECEMBER 12, 2007

BRITTON ENGINEERING & LAND SURVEYING, INC.
8035 BLACK HAWK ROAD, SUITE 5, PO BOX 648
BLACK HAWK, SD 57718
PH. (605) 716-7986

ROCK INCH RANCH ESTATES
LOCATED IN THE N 1/2-NE 1/4
SEC. 23, T2N, R7E, BHM, RAY ID CITY
PENNINGTON COUNTY, SOUTH DAKOTA

ROCK INCH SUBDIVISION
PHASE 1B



N 1/2 - NE 1/4 - NW 1/4

SECTION 1/4-1/4-1/4

LOT 20 OF
NEW PHASE SUBDIVISION

SECTION 1/4-1/4-1/4

SECTION 1/4-1/4-1/4

Project No.	08PD006
Drawn by	ML
Checked by	ML
Date	12/12/07