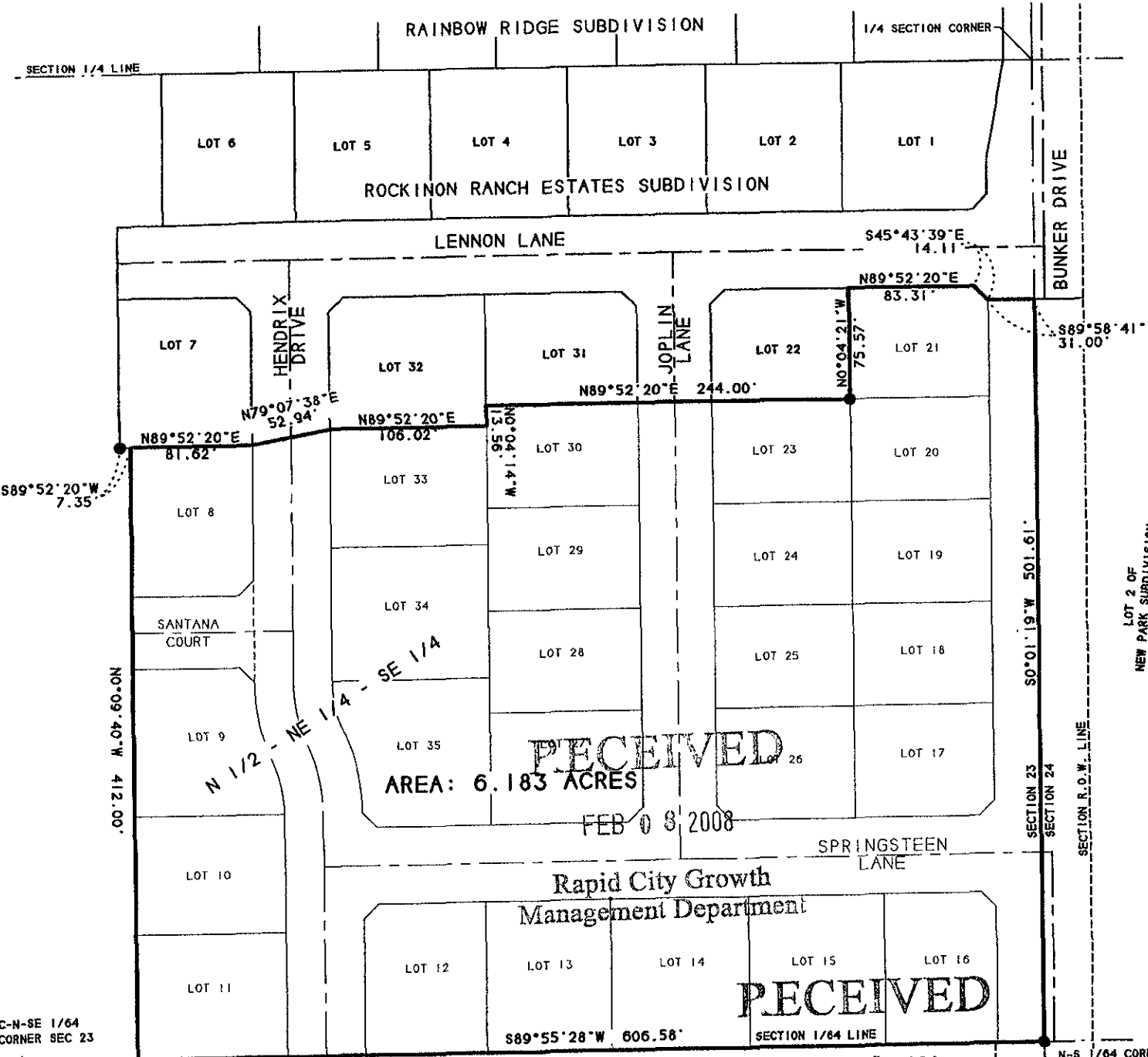


EXHIBIT OF

METES & BOUNDS DESCRIPTION OF A PARCEL OF LAND

LOCATED IN THE N 1/2 OF NE 1/4 OF THE SE 1/4 OF SECTION 23, T2N, R7E, BHM, RAPID CITY PENNINGTON COUNTY, SOUTH DAKOTA (PHASE 1B & PHASE 2 OF ROCKINON RANCH ESTATES SUBDIVISION)

SCALE: 1" = 100' JANUARY 25, 2008



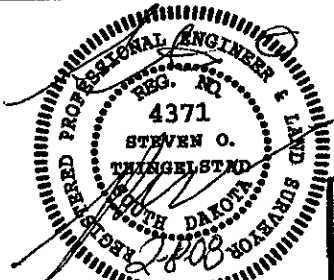
RECEIVED
FEB 08 2008

Rapid City Growth Management Department

RECEIVED

FEB 08 2008

LEGEND
● INDICATES FOUND SURVEY MONUMENT
5/8" REBAR W/CAP MARKED "THINGELSTAD
SD RLS 4371" UNLESS OTHERWISE INDICATED.



Rapid City Growth Management Department

PREPARED BY: STEVEN O. THINGELSTAD
BRITTON ENGINEERING & LAND SURVEYING, INC.
8035 BLACK HAWK ROAD, SUITE 5, PO BOX 649
BLACK HAWK, SOUTH DAKOTA 57718
TELEPHONE: (605) 716-7988