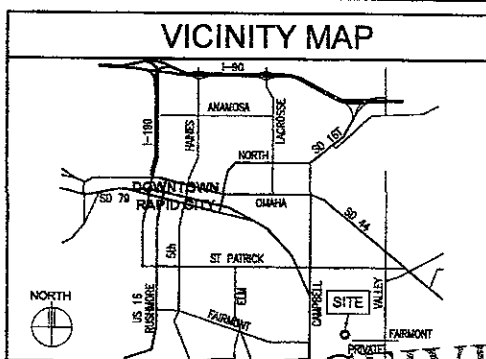


VERIZON WIRELESS

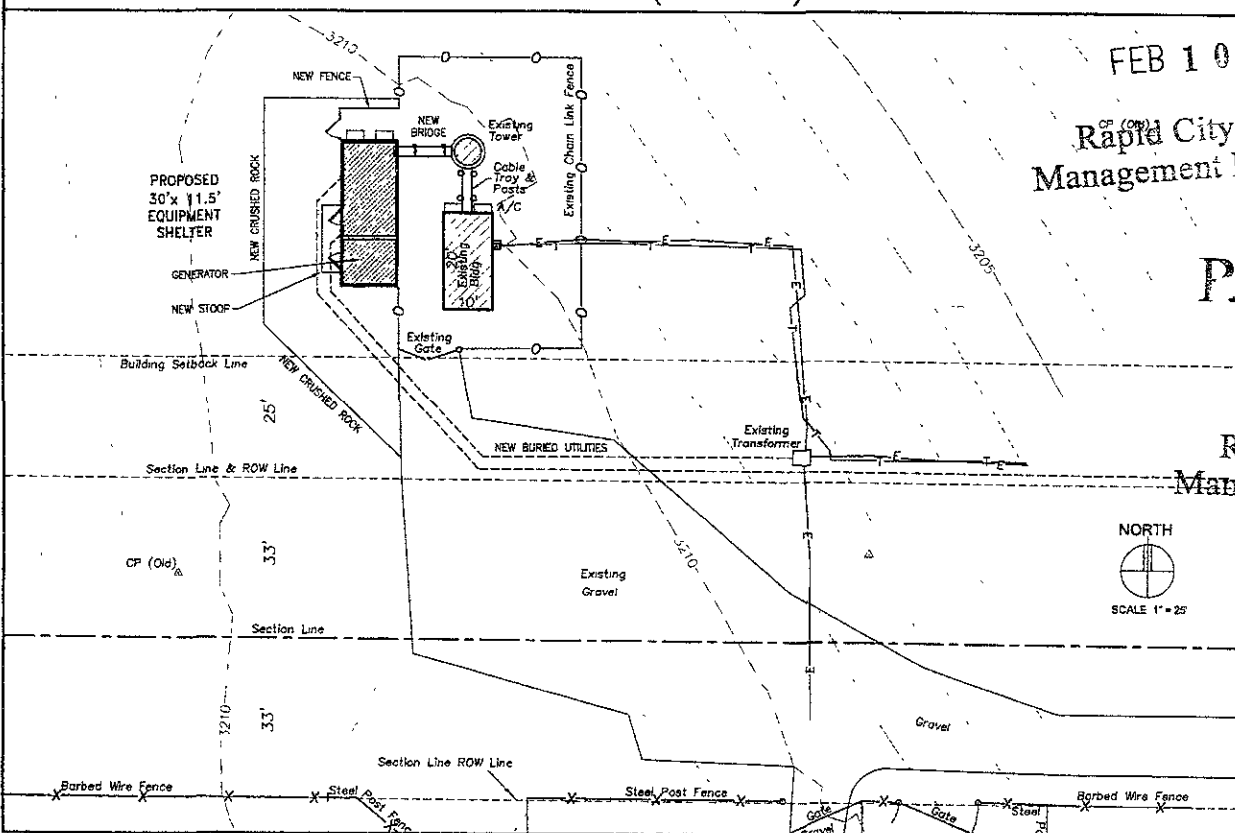
08SR013 RCYC SE RAPID CITY



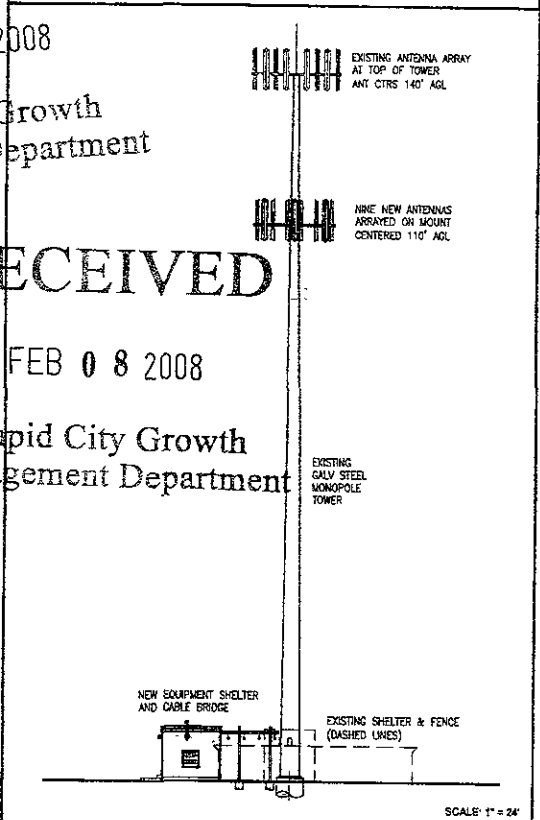
PROJECT INFORMATION	
SITE NAME	RCYC S E RAPID CITY
SITE ADDRESS	2200 E FAIRMONT BLVD RAPID CITY, SD 57703
COUNTY	PENNINGTON COUNTY
GROUND ELEVATION	3,211' AMSL - 0' AGL
ANTENNA TIP HEIGHT	3,328' AMSL - 114' AGL
ANTENNA CENTERLINE HEIGHT	3,321' AMSL - 110' AGL
OVERALL HEIGHT	at least 3,351' AMSL - 140' AGL existing
OCCUPANCY:	B
BUILDING TYPE	V-B
PROJECT DESCRIPTION:	NEW ANTENNAS & CABLES ON EXISTING MONOPOLE TOWER. NEW 11'x4' x 30'-0" PREFABRICATED CONCRETE EQUIPMENT SHELTER ADJACENT. SECURITY FENCE, DRIVEWAY & PARKING AREA. TO IMPROVE WIRELESS TELEPHONE SERVICE ALONG SD-44 & SD-187 CORRIDORS



SITE PLAN (PARTIAL)



SOUTH ELEVATION



RECEIVED

FEB 10 2008

OF CITY
Rapid City Growth
Management Department

RECEIVED

FEB 08 2008

Rapid City Growth
Management Department



PROJECT:
RCYC
S.E. RAPID CITY
2200 E. FAIRMONT BLVD
RAPID CITY, SD 57703

SHEET CONTENTS:
VICINITY MAP
PROJECT INFORMATION
SITE PLAN
TOWER ELEVATION

DRAWN BY: DMW
DATE: 01-04-08
CHECKED BY: TRB