

LAYOUT PLAN
 LOTS A, B, C & D OF TRACT 20 OF HIGH VIEW SUBDIVISION
 LOCATED IN THE W1/2SE1/4 OF SECTION 26 NAD THE NE1/4
 NAD NE1/4SE1/4 OF SECTION 35, T1N, R7E, B.H.M.,
 PENNINGTON, SOUTH DAKOTA



□ REBAR & CAP (LS1019)

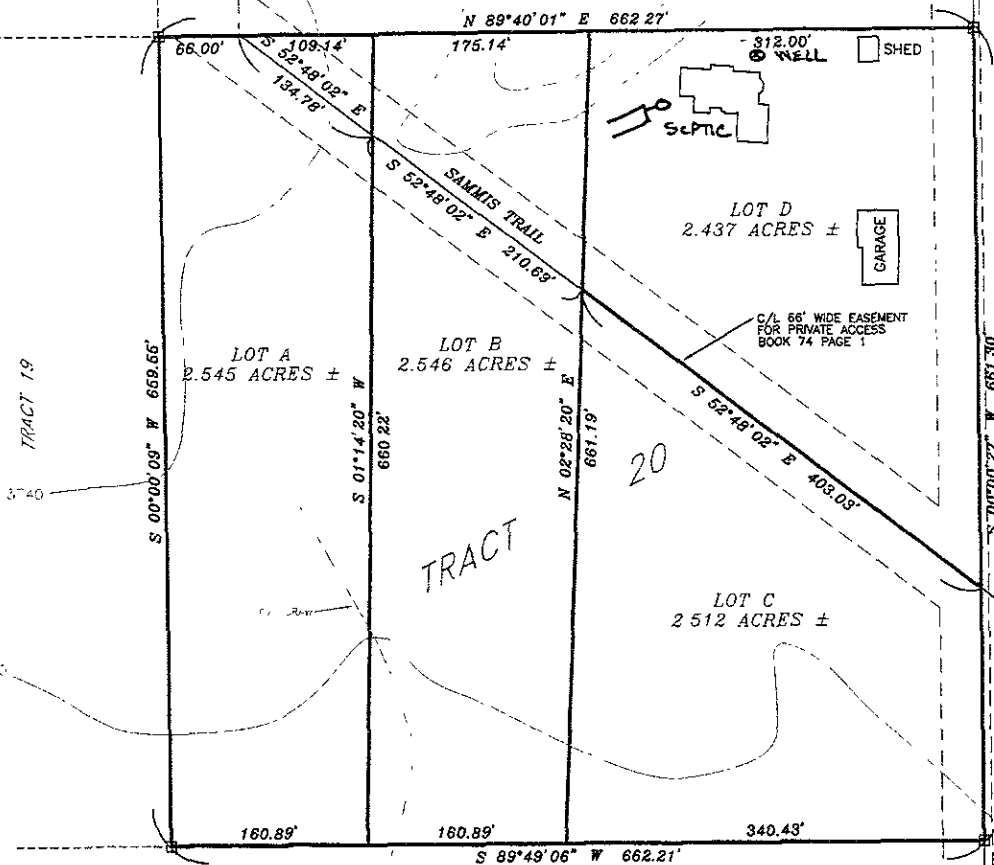


SURVEYORS CERTIFICATE

I, LOREN D. VREM R.L.S. 6577, DO HEREBY
 CERTIFY THAT THE SURVEY SHOWN HEREON
 WAS SURVEYED UNDER MY SUPERVISION AND THAT
 ALL DIMENSIONS ARE TRUE AND CORRECT TO THE
 BEST OF MY KNOWLEDGE AND BELIEF.

LOREN D. VREM R.L.S. 6577

DATE 1/29/08



BOOK 79 PAGE 387
 EXISTING POWER LINE 100' R.O.W.

NW1/4SW1/4

SE1/4SE1/4



Prepared By:
PONDEROSA LAND SURVEYS, L.L.C.
 332A WEST MAIN ST.
 LEAD, SOUTH DAKOTA 57754
 (605) 722-3840

Date:	1/29/2008
Drawn By:	L. D. Vrem
Project No.:	08-15
Dwg. No.:	08-15.dwg

SECTION 35
 SECTION 36