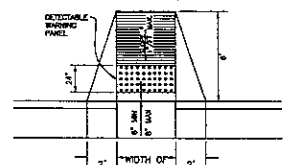
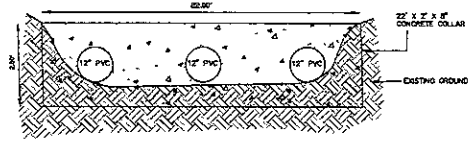


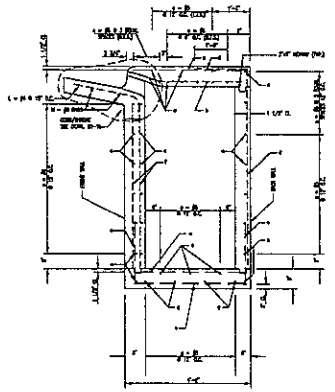
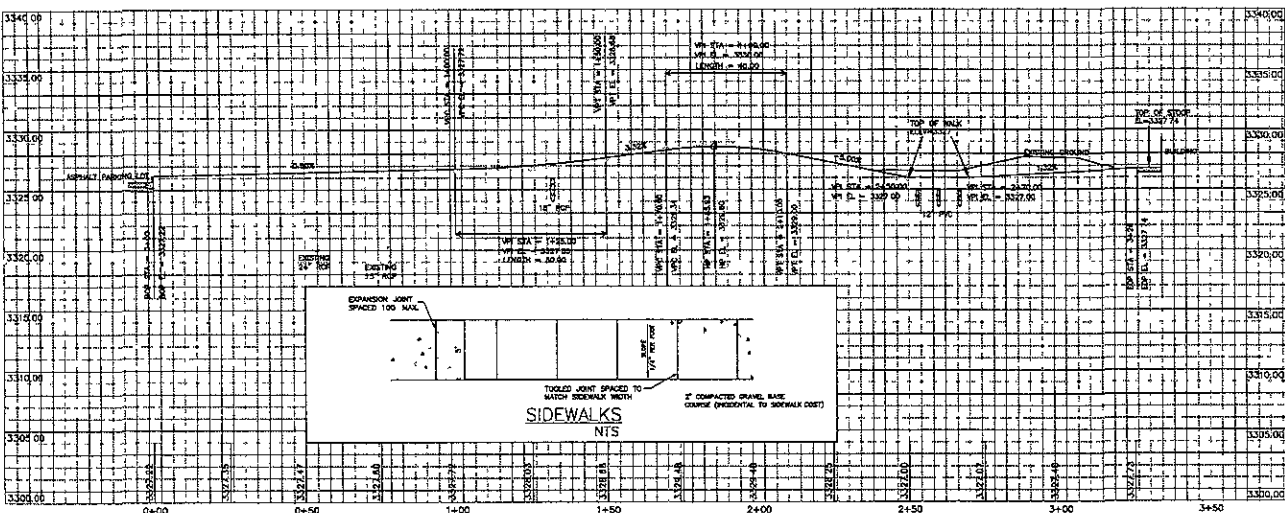
SCALE: 1" = 20' HOR  
 1" = 5' VER



HANDICAP ACCESS RAMPS  
 NTS



CONCRETE HEADWALL  
 NTS



TYPICAL SECTION  
 STANDARD TYPE "E" INLET  
 (12"-30" DIA. PIPE)  
 NTS



Scale:	1:20
Designed by:	Green Bay
GDW:	PJM
Design Date:	7/20/07
10/4/07	10/4/07
Reviewed by:	Survey Data
TA	
Remarks:	

LOCATIONS  
 A PORTION OF THE SET / A SW / 4 OF  
 SECTION 12, TN. R7E, B18M  
 RAPID CITY, PENNINGTON COUNTY, SOUTH DAKOTA

Prepared For:  
 ATTN: MERN DEERLOO  
 RAPID CITY REGIONAL  
 HOSPITAL, P.O. BOX 5000  
 RAPID CITY, SD 57709

Sheet No:  
 #2199

Sheet Title:  
 SIDEWALK  
 PROFILE