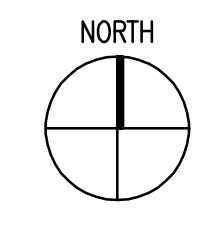
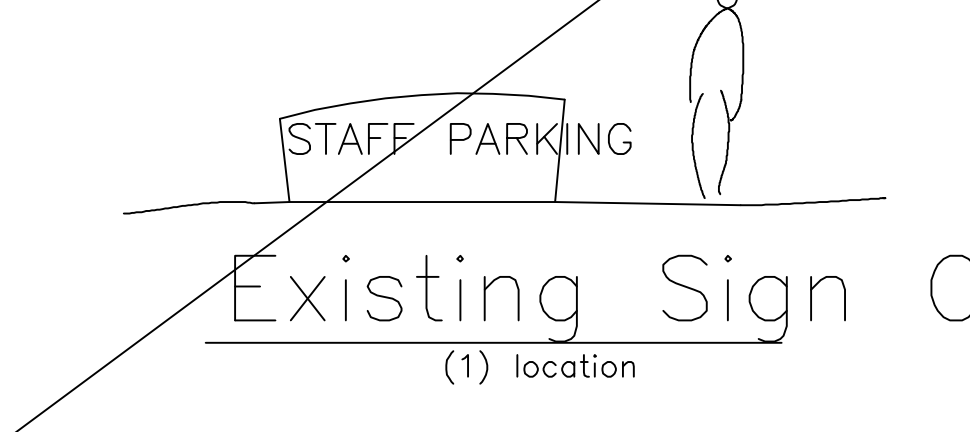
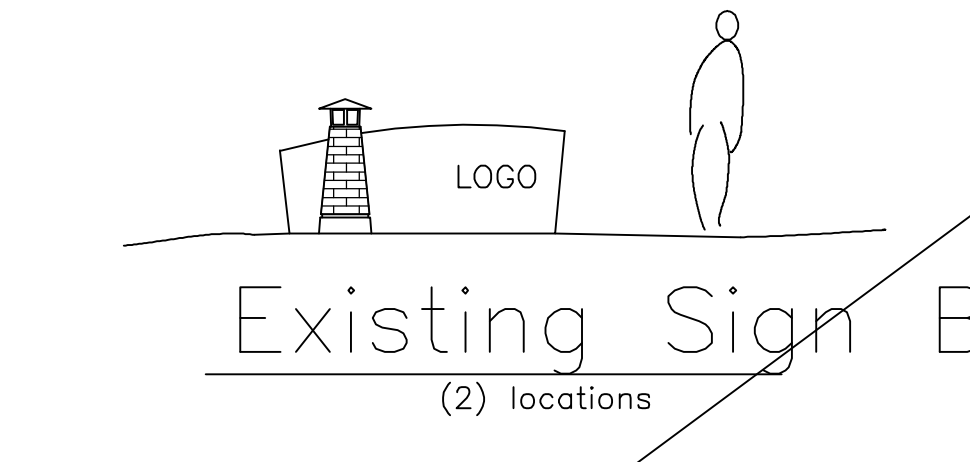
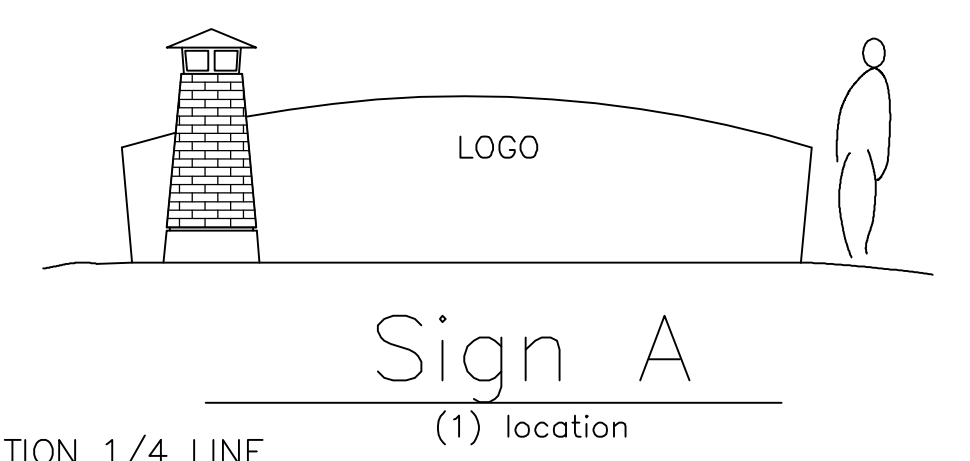
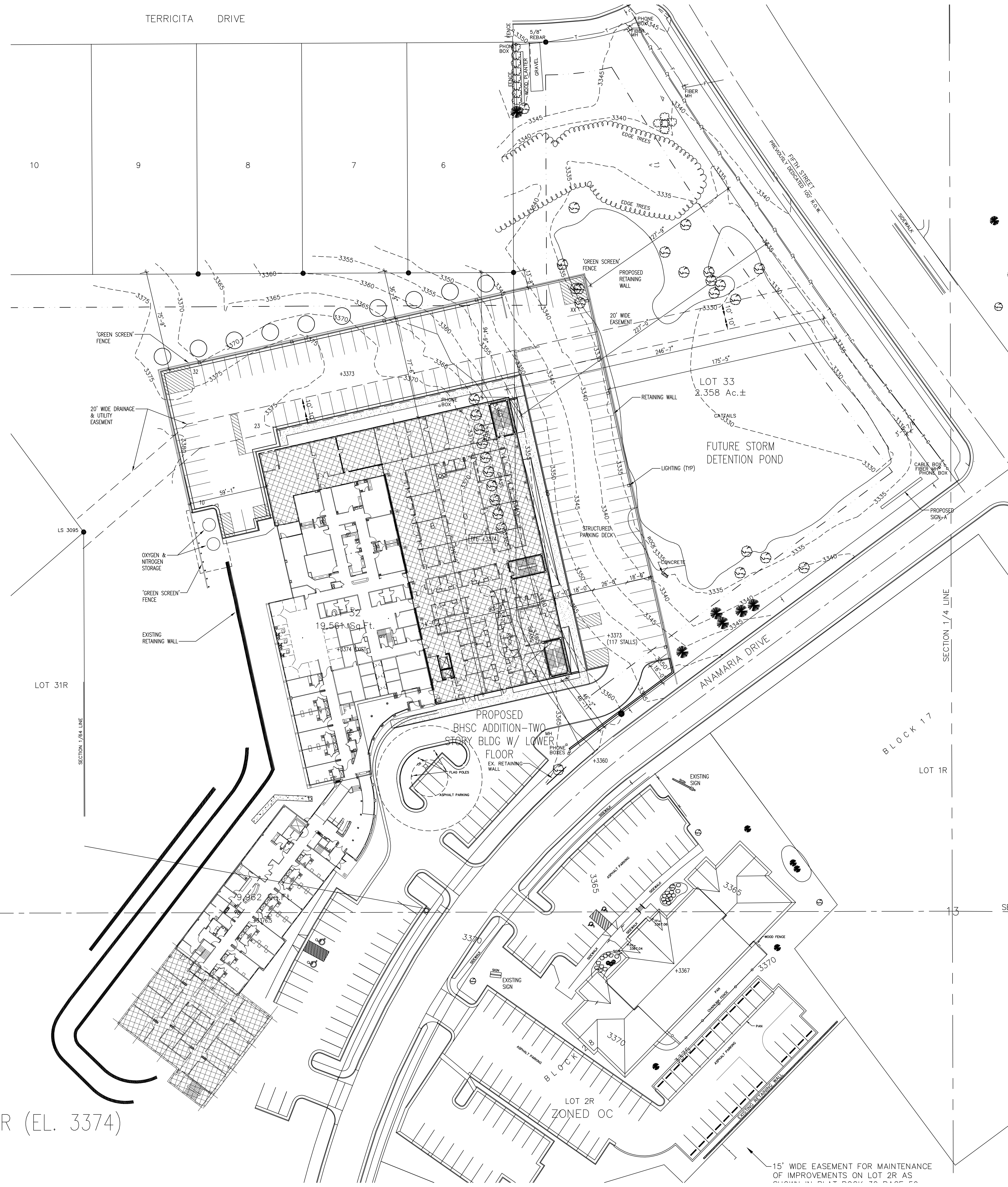
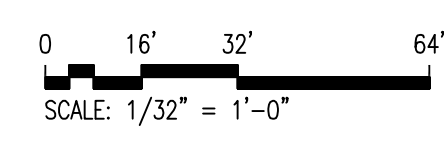


LEGEND

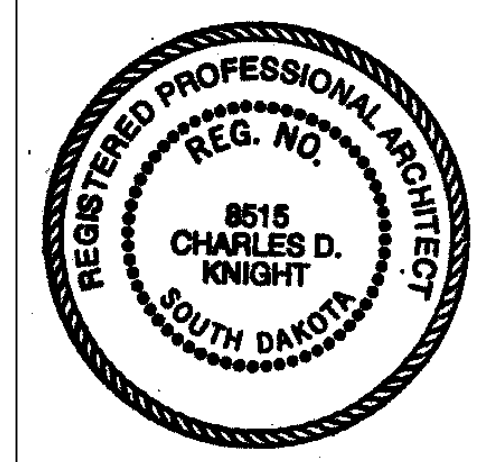
○ MH	SPOT ELEVATION
⊗	MANHOLE
⊕	FIRE HYDRANT
⊙	WATER VALVE
⊖	POWER POLE
⊕	LIGHT POLE
⊙	DECIDUOUS TREE
⊙	CONIFEROUS TREE
⊙	BUSH
—	WOOD FENCE
—	CHAINLINK FENCE
—	CURB & GUTTER
—	WATER LINE
—	POWER LINE
—	UNDERGROUND TELEPHONE LINE
—	SANITARY SEWER LINE
—	GAS LINE
—	CABLE TV LINE
—	FIBER OPTIC LINE
—	MINOR CONTOUR (1')
—	MAJOR CONTOUR (5')
○	SET 5/8" REBAR W/CAP "REINER" - 2852 and "SPERLICH"
●	FOUND SURVEY MONUMENT



BHSC PROPOSED
 SITE PLAN—MAIN FLOOR (EL. 3374)



Mar 17, 2008 - 11:50am
 P:\Minneapolis\051309\001\040\SHEETS\A-051.dwg
 voughnit



Revisions

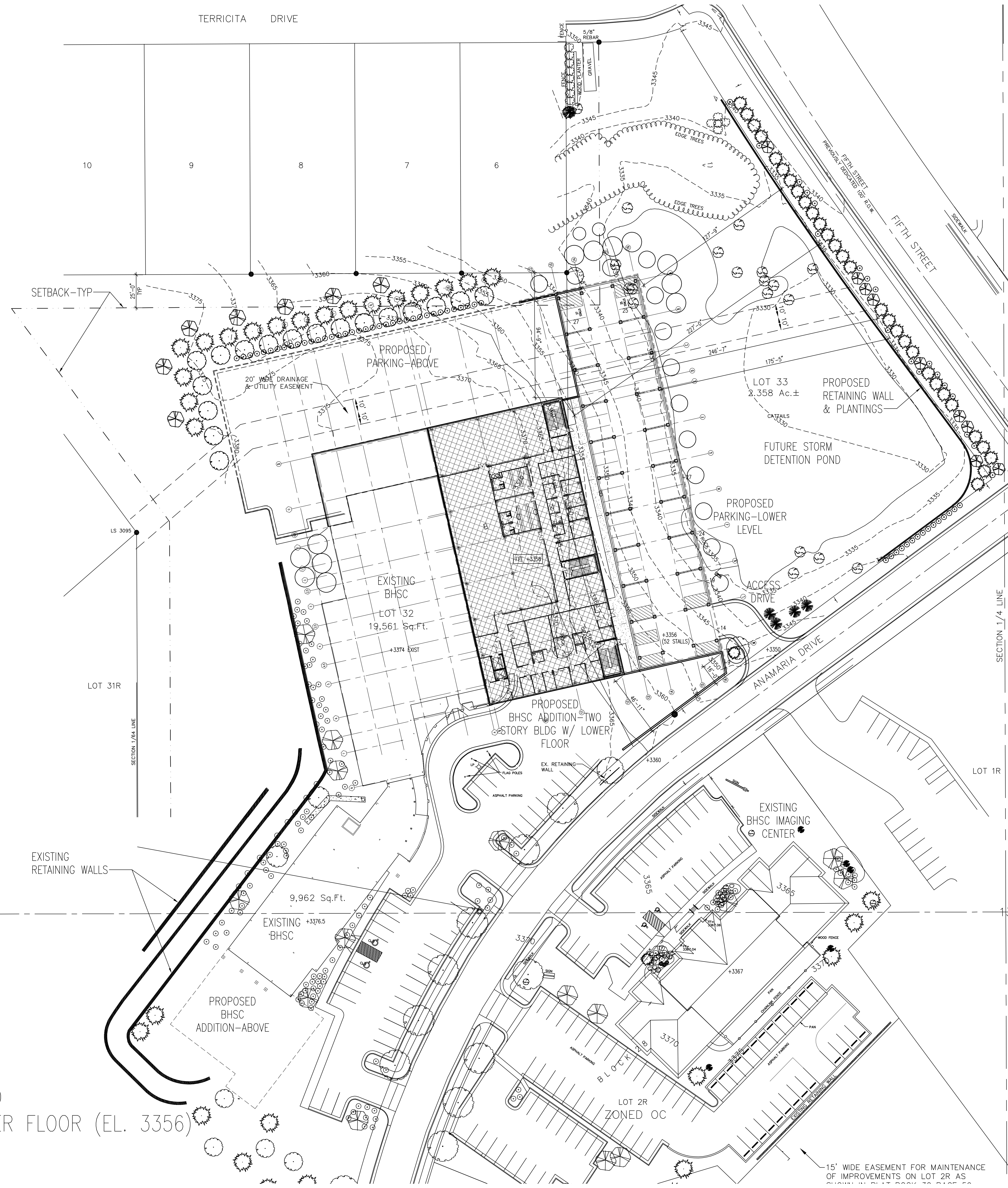
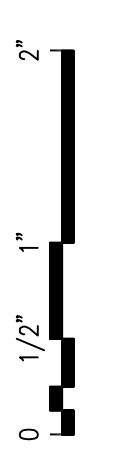
NO.	ISSUE	DATE

Sheet Information

Date	03.17.2008
Job Number	51309.001
Drawn	KCM
Checked	TKC
Approved	CDK

TITLE
 PROPOSED
 SITE PLAN—
 MAIN FLOOR

Sheet
A-051
 Not Issued For Construction
 For PCD Submittal Only
 Copyright © 2006 Perkins+Will



Landscape Schedule

(Black Hills Surgery Center)

SYM	QTY	COMMON NAME	TYPE	POINTS	TOTAL PTS
PP	16	PONDEROSA PINE	LARGE	2000	32,000
QA	10	QUAKING ASPEN	MEDIUM	1000	10,000
PA	24	PAT SEEDLESS ASH	LARGE	2000	48,000
CC	11	CANADA RED CHERRY	MEDIUM	1000	11,000
RO	13	RUSSIAN OLIVE	MEDIUM	1000	13,000
JB	41	JUNIPER BUFFALO	SHRUB	250	10,250
JP	11	JACKMAN POTENTILLA	SHRUB	250	2,750
OG	40	ORNAMENTAL GRASS	SHRUB	250	10,000
GS	13	GOLD FLAME SPIREA	SHRUB	250	3,250
GP	35	G FLAME POTENTILLA	SHRUB	250	8,750
SP	1	SCOTCH PINE	MEDIUM	1,000	1,000
BS	9	BLACK HILLS SPRUCE	LARGE	2,000	18,000
HB	8	HACKBERRY	LARGE	2,000	16,000
SS	2	STAGHORN SUMAC	SMALL	500	1,000
RJ	55	ROCKY MT JUNIPER	SHRUB	250	13,750
EI	17	ENGELMAN IVY	SHRUB	250	4,250
CB	38	CRMSN PYGMY BARB	SHRUB	250	9,500
GR	1,200	GRASS	GRASS	10/SY	12,000
				TOTAL POINTS PROPOSED	224,500
				TOTAL POINTS REQUIRED	154,000

Landscape Schedule

(Black Hills Imaging Center)

SYM	QTY	COMMON NAME	TYPE	POINTS	TOTAL PTS
PP	5	PONDEROSA PINE	LARGE	2000	10,000
BS	5	BLACK HILLS SPRUCE	LARGE	2000	10,000
QA	5	QUAKING ASPEN	MEDIUM	1000	5,000
PA	4	PAT SEEDLESS ASH	LARGE	2000	8,000
CC	2	CANADA RED CHERRY	MEDIUM	1000	2,000
GP	17	G FLAME POTENTILLA	SHRUB	250	4,250
NP	3	NEWPORT PLUM	SHRUB	1000	3,000
PS	16	PRINCESS SPIREA	SHRUB	250	4,000
GR	2,630	GRASS	GRASS	10/SY	26,300
				TOTAL POINTS PROPOSED	72,550
				TOTAL POINTS REQUIRED	69,426

Square feet (Black Hills Surgery Center)

• Existing facility	38,510 sq.ft.
• Proposed Additions	91,169 sq.ft.
Total	129,679 sq.ft.

• Southwest Addition:

Main Floor	6,940 sq.ft.
Upper Floor	6,940 sq.ft.
Total	13,880 sq.ft.

• Northeast Addition:

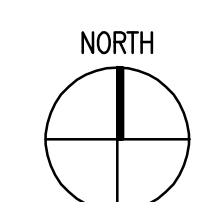
Lower Floor	22,788 sq.ft.
Main Floor	26,463 sq.ft.
Upper Floor	28,038 sq.ft.
Total	77,289 sq.ft.

Square feet (Black Hills Imaging Center)

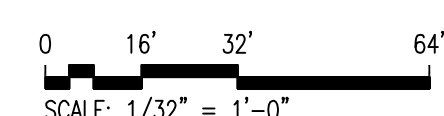
• Existing facility	6,030 sq.ft.
• Northeast Addition	2,900 sq.ft.
• Southwest Addition	2,800 sq.ft.
Total	11,730 sq.ft.

Total Proposed Parking

- Proposed Lower Level Parking = 52 stalls
- Proposed Main Level Parking = 116 stalls
- Proposed Additional Lot Parking = 125 stalls
- Existing Imaging Center Parking = 100 stalls
- Exist Surgery Center Parking to Remain = 40 stalls
- Total Proposed Parking = 433 stalls



BHSC PROPOSED
SITE PLAN-LOWER FLOOR (EL. 3356)



Mar 17, 2008 - 11:49am
P:\Minneapolis\051309\001\DAO\SHEETS\A-050.dwg
vaughn

84 S. 10th St.
Suite 200
Minneapolis, MN 55403
T: 612.851.5000
F: 612.851.5001
www.perkinswill.com

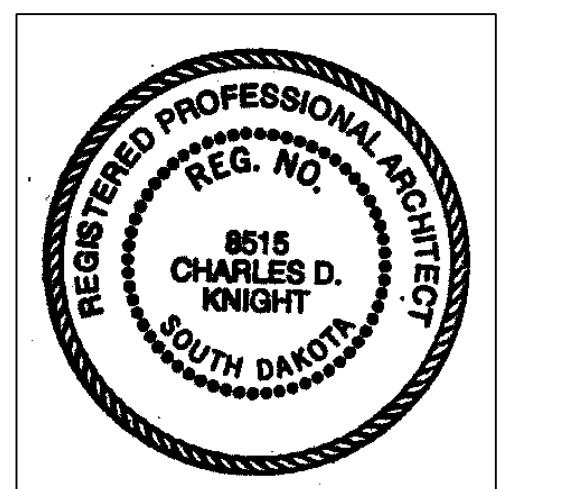
Black Hills Surgery Center
1868 Lombardy Drive
Rapid City, South Dakota 57701
T: 605.721.4700
F: 605.721.4708

In association with:
Local Architects
Williams & Associates
516 Canyon Street
Spearfish, South Dakota 57763
T: 605-642-2009
F: 605-642-3339

MEP Engineers
Gausman & Moore
7700 Rosedale Towers
1700 Highway 35 West
Saint Paul, MN 55113-4034
T: 651.639.9616
F: 651.639.9618

Structural Engineers
Palanisami & Associates
5661 International Parkway
Minneapolis, MN 55426-3046
T: 763.533.9403
F: 763.533.9586

Civil Engineers
**Sperlich Consulting
Assoc., INC**
821 1/2 Columbus Street
Rapid City, SD 57701-4609
T: 605.241.0745
F: 970.241.0765



Revisions

NO.	ISSUE	DATE

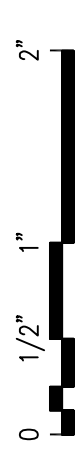
Sheet Information

Date	03.17.2008
Job Number	51309.001
Drawn	KCM
Checked	TKC
Approved	CDK
Title	

PROPOSED
SITE PLAN-
LOWER FLOOR

Sheet
A-050
Not Issued For Construction
For PCF Submittal Only
Copyright © 2006 Perkins+Will

08PD005



PERKINS
+ WILL

84 S. 10th St.
Suite 200
Minneapolis, MN 55403
T: 612.851.5000
F: 612.851.5001
www.perkinswill.com

Black Hills Surgery Center
1868 Lombardy Drive
Rapid City, South Dakota 57701
T: 605.721.4700
F: 605.721.4708

In association with:
Local Architects

Williams & Associates
516 Canyon Street
Spearfish, South Dakota 57783-2320
T: 605-642-2009
F: 605-642-3339

MEP Engineers
Gausman & Moore

700 Rosedale Towers
1700 Highway 35 West
Saint Paul, MN 55113-4034
T: 651.639.9616
F: 651.639.9618

Structural Engineers
Palanisami & Associates

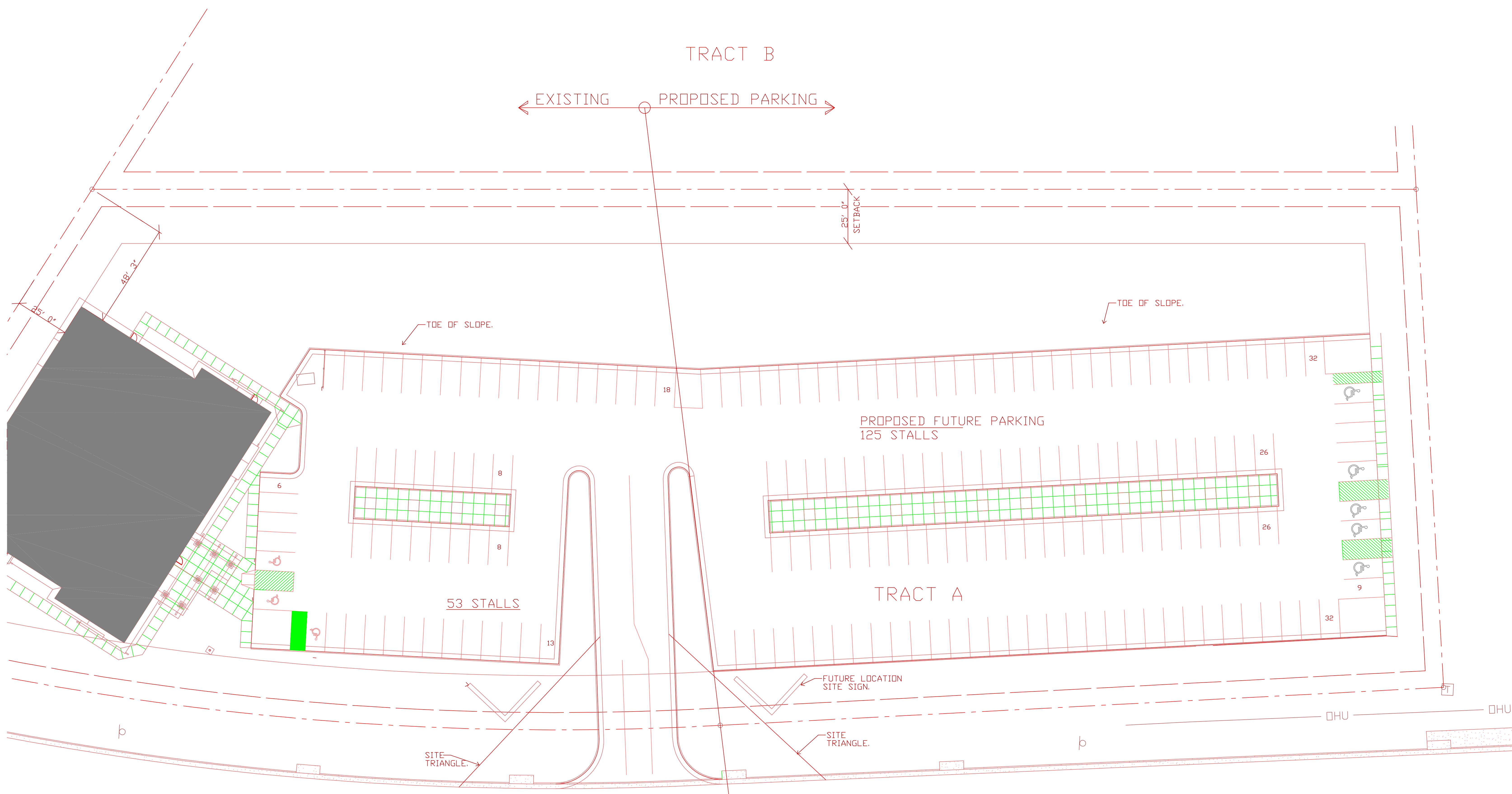
5661 International Parkway
Minneapolis, MN 55426-3046
T: 763.533.9403
F: 763.533.9586

Civil Engineers
Sperlich Consulting
Assoc., INC

821 1/2 Columbus Street
Rapid City, SD 57701-4809
T: 970.241.0745
F: 970.241.0765

TRACT B

EXISTING PROPOSED PARKING



PROPOSED FUTURE PARKING
125 STALLS

53 STALLS

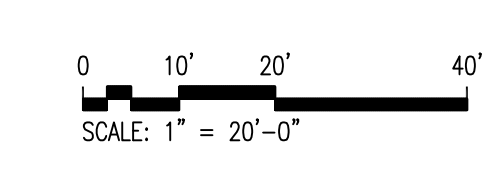
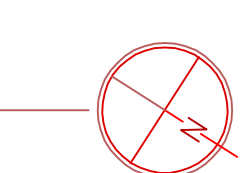
TRACT A

FIFTH STREET

EXISTING PROPOSED PARKING

SITE PLAN - ADDITIONAL PARKING LOT

SCALE: 1" = 20'-0"



Revisions

NO.	ISSUE	DATE

Sheet Information

Date	03.17.2008
Job Number	51309.001
Drawn	XXX
Checked	XXX
Approved	XXX

Title

PROPOSED
SITE PLAN-
ADDITIONAL
PARKING LOT

Sheet

A-052

Not Issued For Construction
For PCD Submittal Only

Copyright © 2006 Perkins+Will