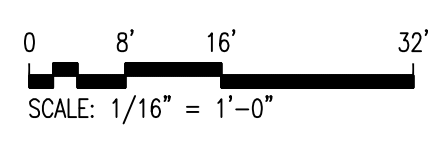


**2** BLACK HILLS SURGERY CENTER – PROPOSED EAST BUILDING ELEVATION  
1/16" = 1'-0"

SEE DRAWING 1/A-300 FOR  
PARKING AREA ELEVATION



**1** BLACK HILLS SURGERY CENTER – EXISTING EAST BUILDING ELEVATION  
1/16" = 1'-0"



**Black Hills Surgery Center**  
1868 Lombardy Drive  
Rapid City, South Dakota 57701  
T: 605.721.4700  
F: 605.721.4708

In association with:  
**Williams & Associates**  
Local Architects  
516 Canyon Street  
Spearfish, South Dakota 57763-2320  
T: 605-642-2009  
F: 605-642-3339

MEP Engineers  
**Gausman & Moore**  
7700 Rosedale Towers  
1700 Highway 35 West  
Saint Paul, MN 55113-4034  
T: 651.639.9616  
F: 651.639.9618

Structural Engineers  
**Palanisami & Associates**  
5661 International Parkway  
Minneapolis, MN 55428-3046  
T: 763.533.9483  
F: 763.533.9586

Civil Engineers  
**Sperlich Consulting  
Assoc., INC**  
821 1/2 Columbus Street  
Rapid City, SD 57701-4809  
T: 970.241.0745  
F: 970.241.0765



**Revisions**

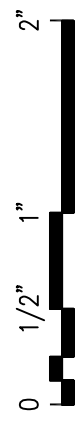
NO.	ISSUE	DATE

**Sheet Information**

Date	03.17.2008
Job Number	51309.001
Drawn	XXX
Checked	XXX
Approved	XXX

**EXISTING &  
PROPOSED  
EAST BUILDING  
ELEVATIONS**

**Sheet**  
**A-301**  
Not Issued For Construction  
For PCD Submittal Only  
Copyright © 2006 Perkins+Will



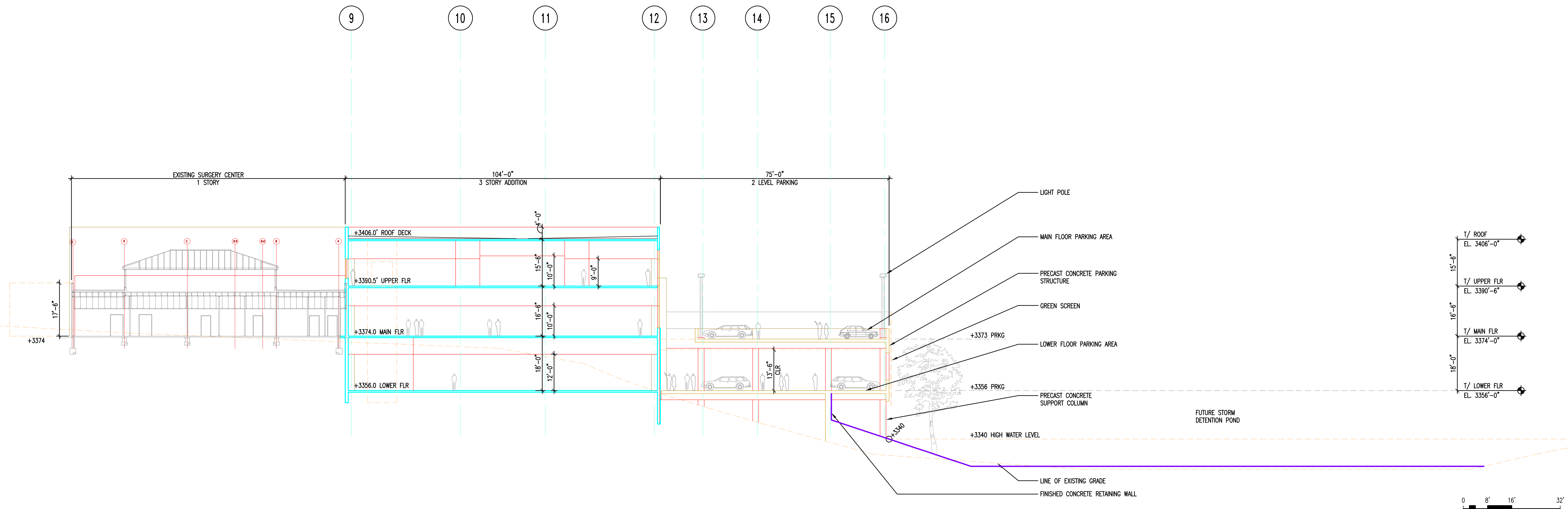
**Black Hills Surgery Center**  
1868 Lombardy Drive  
Rapid City, South Dakota 57701  
T: 605.721.4700  
F: 605.721.4708

In association with:  
Local Architects  
**Williams & Associates**  
516 Canyon Street  
Spearfish, South Dakota 57783-2320  
T: 605-642-2009  
F: 605-642-3339

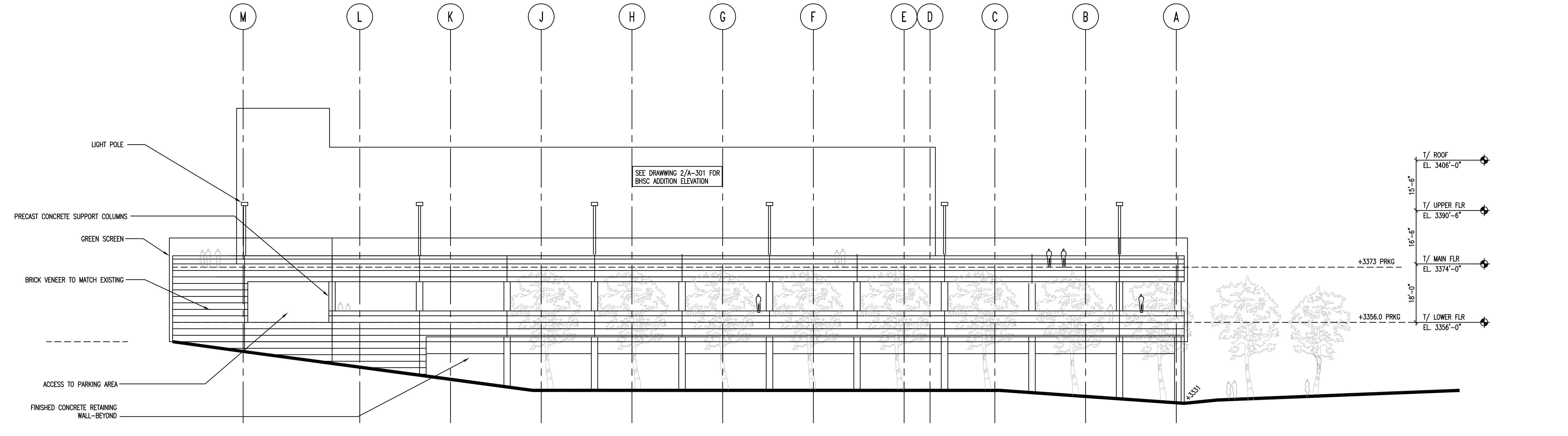
MEP Engineers  
**Gausman & Moore**  
7700 Rosedale Towers  
1700 Highway 35 West  
Saint Paul, MN 55113-4034  
T: 651.639.9616  
F: 651.639.9618

Structural Engineers  
**Palanisami & Associates**  
5661 International Parkway  
Minneapolis, MN 55426-3046  
T: 763.533.9463  
F: 763.533.9586

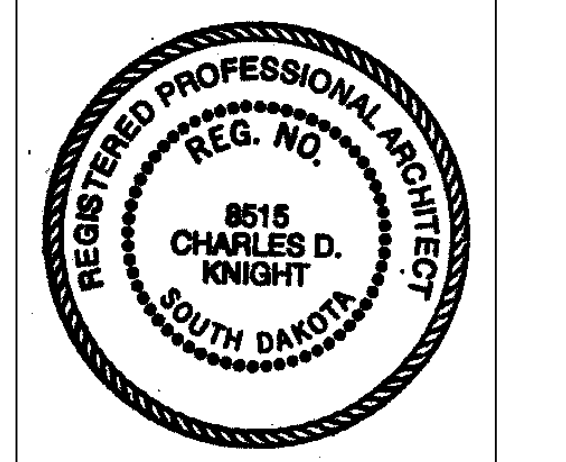
Civil Engineers  
**Sperlich Consulting  
Assoc., INC**  
821 1/2 Columbus Street  
Rapid City, SD 57701-4809  
T: 970.241.0745  
F: 970.241.0765



**2** BLACK HILLS SURGERY CENTER – PROPOSED BUILDING SECTION LOOKING NORTH  
1/16" = 1'-0"



**1** BLACK HILLS SURGERY CENTER – EAST BUILDING ELEVATION AT PARKING AREA  
1/16" = 1'-0"



**Revisions**

NO.	ISSUE	DATE

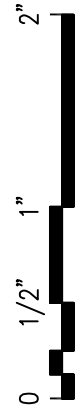
**Sheet Information**

Date	03.17.2008
Job Number	51309.001
Drawn	XXX
Checked	XXX
Approved	XXX

PROPOSED PARKING  
ELEVATION &  
PROPOSED  
SECTION

**A-302**  
Not Issued For Construction  
For PCD Submittal Only  
Copyright © 2006 Perkins+Will

08PD005



PERKINS  
+ WILL

84 S. 10th St.  
Suite 200  
Minneapolis, MN 55403  
T: 612.855.0000  
F: 612.855.0001  
www.perkinswill.com

**Black Hills Surgery Center**  
1868 Lombardy Drive  
Rapid City, South Dakota 57701  
T: 605.721.4700  
F: 605.721.4708

In association with:

**Williams & Associates**  
Local Architects  
516 Canyon Street  
Spearfish, South Dakota 57763  
T: 605-642-2009  
F: 605-642-3339

MEP Engineers

**Gausman & Moore**

700 Rosedale Towers  
1700 Highway 35 West  
Saint Paul, MN 55113-4034  
T: 651.639.9616  
F: 651.639.9618

Structural Engineers

**Palanisami & Associates**

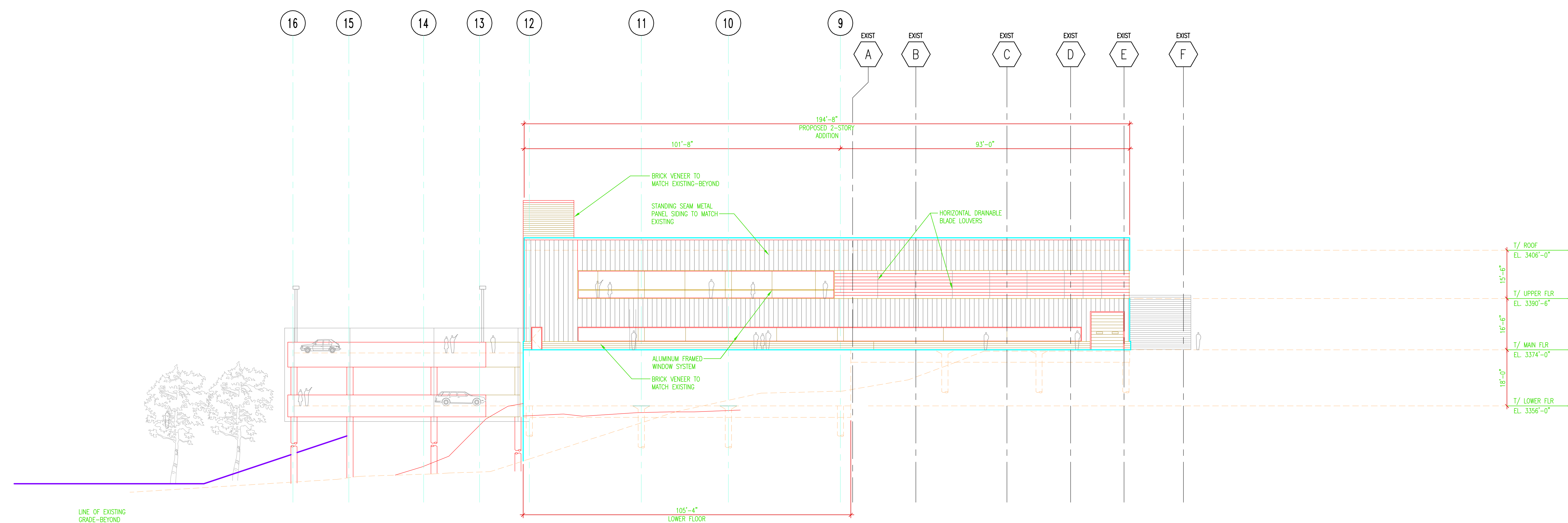
5661 International Parkway  
Minneapolis, MN 55426-3046  
T: 763.233.9403  
F: 763.533.9586

Civil Engineers

**Sperlich Consulting**

Assoc., INC

821 1/2 Columbus Street  
Rapid City, SD 57701-4809  
T: 970.241.0745  
F: 970.241.0765



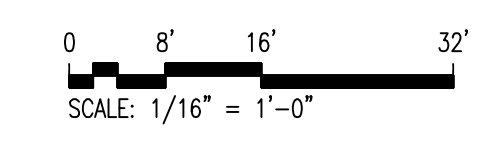
Revisions

NO.	ISSUE	DATE

Sheet Information

NO.	ISSUE	DATE
Date	03.17.2008	
Job Number	51309.001	
Drawn	XXX	
Checked	XXX	
Approved	XXX	

PROPOSED NORTH  
BUILDING  
ELEVATION



**1** BLACK HILLS SURGERY CENTER – PROPOSED NORTH BUILDING ELEVATION  
1/16" = 1'-0"

Mar 17, 2008 - 1:44pm  
P:\Minneapolis\051309\001\00A\SHEETS\A-303.dwg  
voight

Sheet  
**A-303**  
Not Issued For Construction  
For PCD Submittal Only  
Copyright © 2006 Perkins+Will