

08SV008

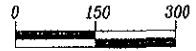
Plat of Lots A, B, & C of Clemmons Addition

Located in (and formerly a portion of) the Balance of Lot 3

in the S1/2 SW1/4, Section 14, T1N, R8E, B.H.M.

Pennington County, South Dakota

Prepared by:
Fisk Land Surveying &
Consulting Engineers, Inc.
P.O. Box 8164
Rapid City, South Dakota 57709
605-348-1338
Project # 08-01-01

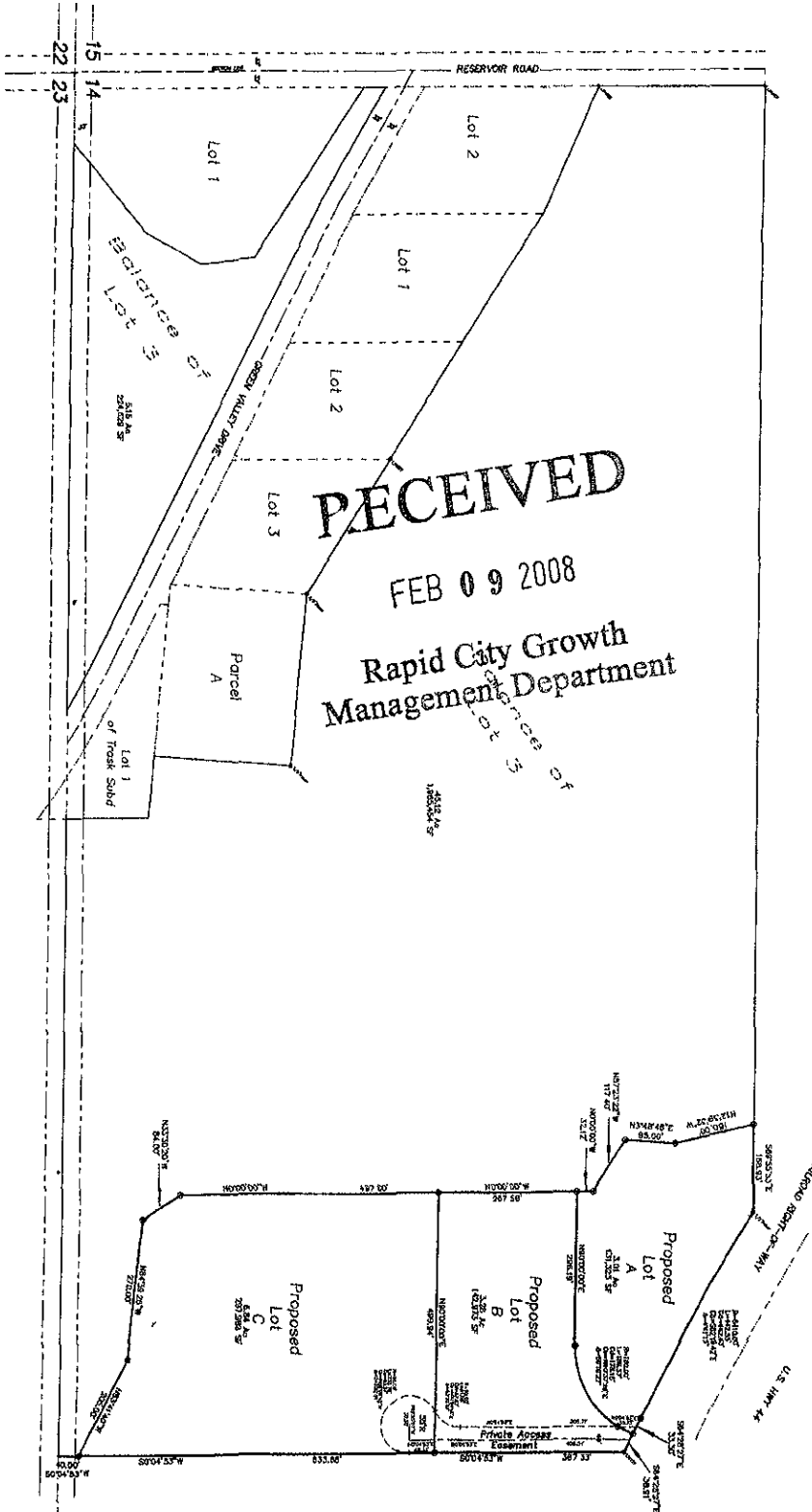


1" = 150'

February 4, 2008

Basis of Bearings
GPS Observation

= Found Survey Monument as noted
= Set Rebar with cap marked "RW Fisk 6565"



RECEIVED

RECEIVED

FEB 09 2008

Rapid City Growth
Management Department