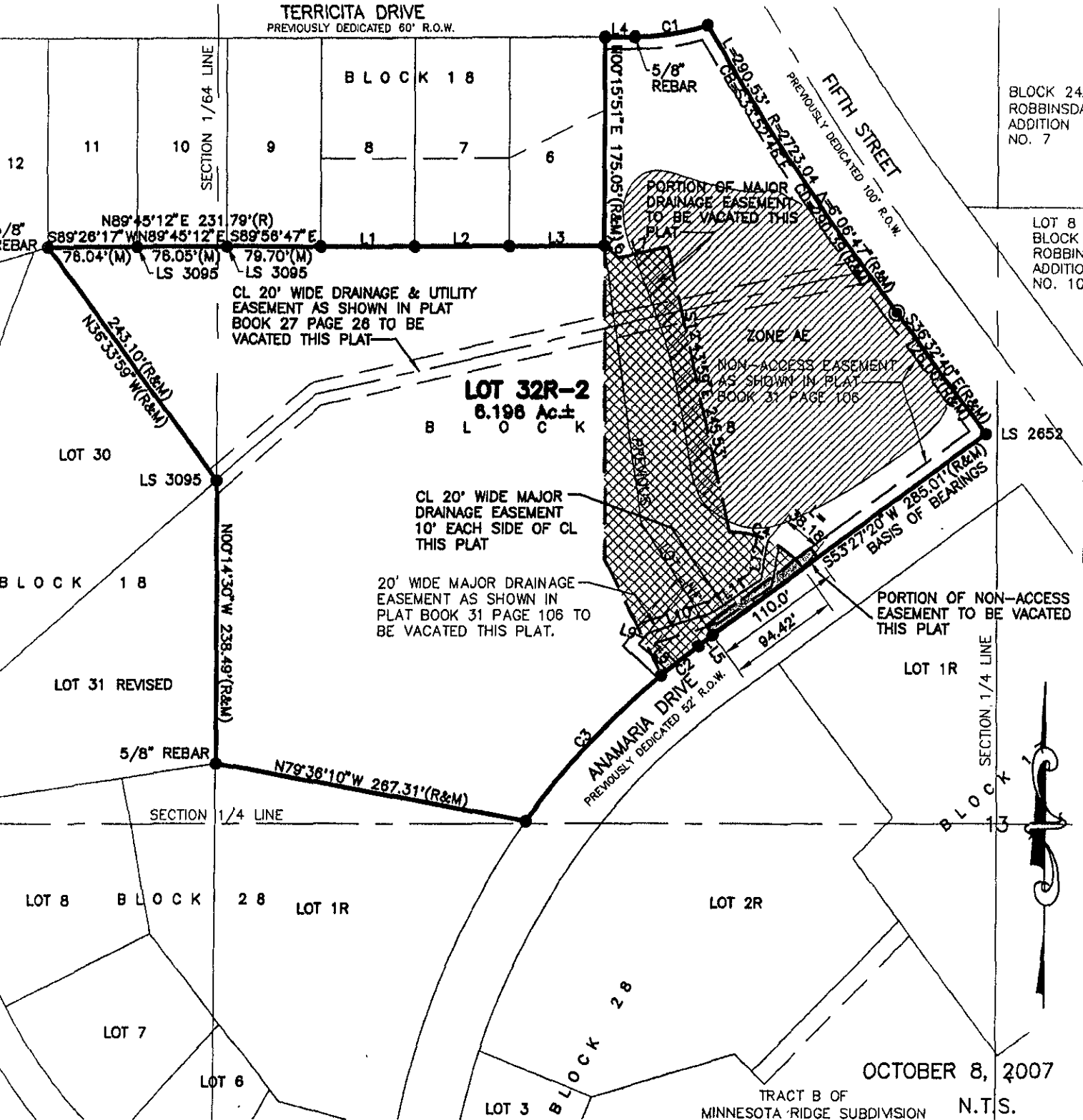


# PLAT OF LOT 32R-2 OF BLOCK 18, ROBBINSDALE ADDITION NO. 10

(formerly Lot 32R and Lot 33R of Block 18 of Robbinsdale Addition No. 10)

LOCATED IN THE SE<sup>1</sup>/<sub>4</sub> OF THE NW<sup>1</sup>/<sub>4</sub>,  
SECTION 13, T1N, R7E, B.H.M.,  
RAPID CITY, PENNINGTON COUNTY, SOUTH DAKOTA



**LOT 32R-2**  
6.198 Ac.±  
B L O C K

CL 20' WIDE DRAINAGE & UTILITY  
EASEMENT AS SHOWN IN PLAT  
BOOK 27 PAGE 28 TO BE  
VACATED THIS PLAT

CL 20' WIDE MAJOR  
DRAINAGE EASEMENT  
10' EACH SIDE OF CL  
THIS PLAT

20' WIDE MAJOR DRAINAGE  
EASEMENT AS SHOWN IN  
PLAT BOOK 31 PAGE 106  
TO BE VACATED THIS PLAT.

PORTION OF NON-ACCESS  
EASEMENT TO BE VACATED  
THIS PLAT

OCTOBER 8, 2007

TRACT B OF  
MINNESOTA RIDGE SUBDIVISION

N.T.S.