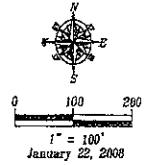
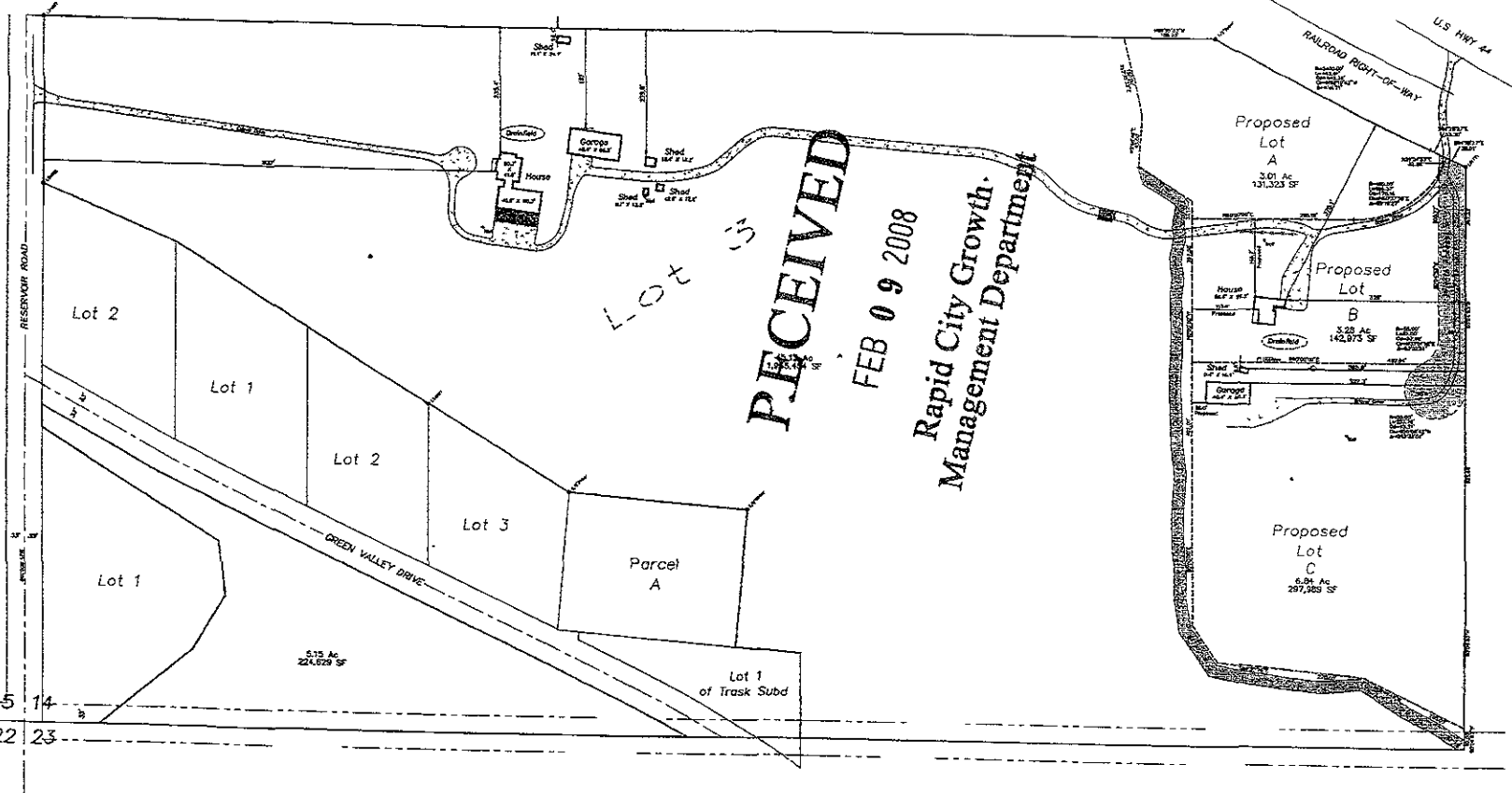


PRELIMINARY



LEGEND
 ◊ = Utility Pole
 ○ = Utility Pedestals



RECEIVED
 FEB 09 2008
 Rapid City Growth
 Management Department

Fisk Land Surveying & Consulting Engineers, Inc.
 1022 High Street - P.O. Box 8154
 Rapid City, South Dakota 57709
 (605) 342-8800
 www.fisklandsurveyors.com

The information herein is submitted as is and without warranty. The user assumes all liability for any use of this information. No warranty or representation is made by the engineer or architect to any party, for any other purpose or for any other use than that intended.

Proposed Platting
 Balance of Lot 3 in the S1/2 SW1/4
 Section 14, T1N, R8E, B.H.M.
 Pennington County, South Dakota

Surveyed by: RLJ
 Date: 1/2/08
 Drawn by: RWF
 Date: 2/01/08
 Checked by: RWF

Project No.
 08-01-01

Layout