

Dakota Canyon Market Place  
Rapid City, South Dakota

Planning Commission Members  
City Council Men and Women;

Attached are documents to assist in understanding the components of the Dakota Canyon Marketplace tax increment district.

These documents along with the project plan provided by the city staff will hopefully better inform you on the project, stimulate questions or comments, and add greater clarity to the project scope.

Of particular interest is the Wal-Mart site line development photo's and map. These photos were taken from the area in Enchanted Hills where 6 or 7 homes are directly impacted visually. I believe these are the only home owners which will be able to see the actual development in any close proximity. The photos depict the Wal-Mart store at the grade elevation it is to be constructed. This shows the store with the roof at approximately the elevation of Highway 16.

If you have questions r comments or would like more information please feel free to call.

Cordially,

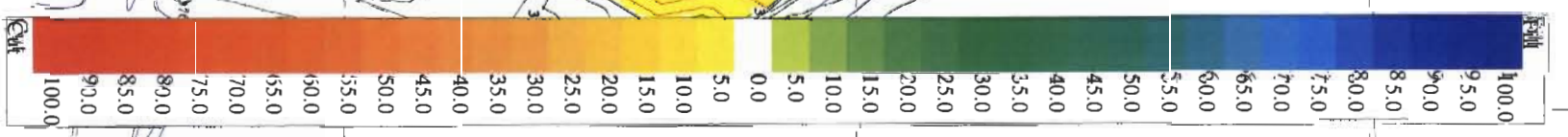
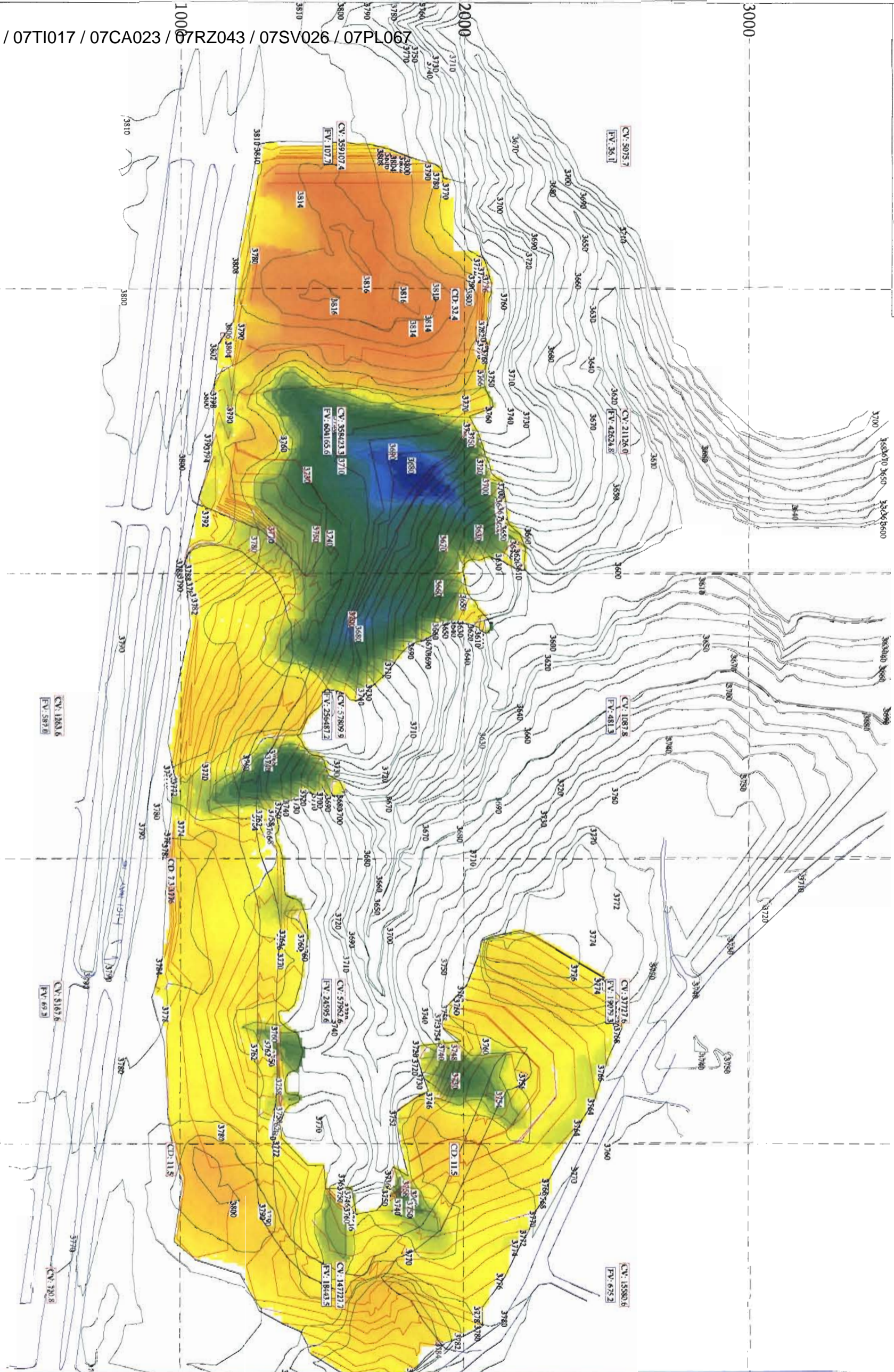
James Scull Jr.  
Project Manager

**Dakota Canyon Market Place  
T I D Discussion  
October 22, 2007**

Exhibits as follows:

- Grading Maps Cut and Fill Color Rendering and Grading Location
- Water Line Map with Sizes
- Sewer District Map
- Project Sewer Line Map with Depths of the Sewers
- Catron Sewer Map
- Park Map
- Wal-Mart Site Line Development Photo and Map

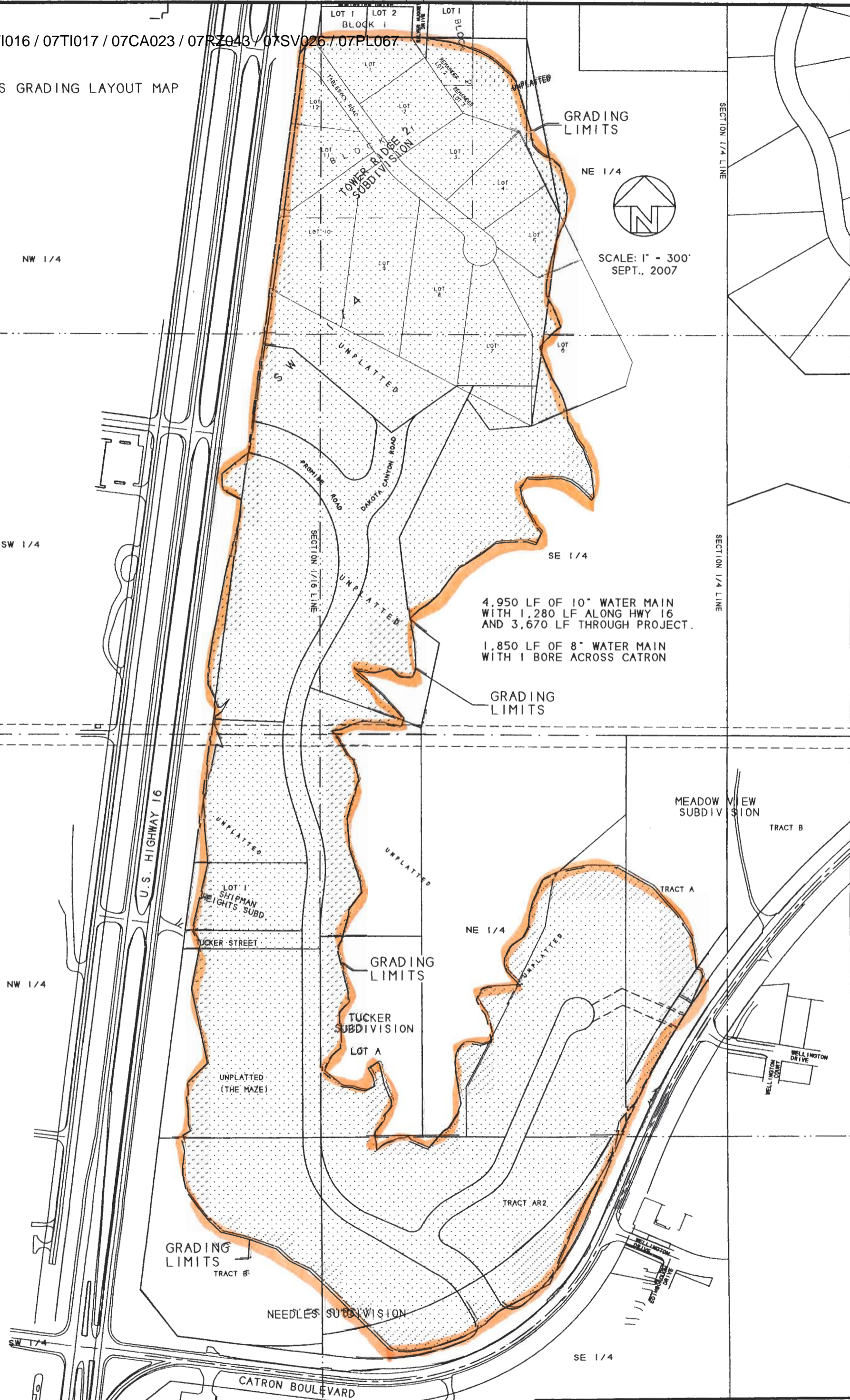




1000 2000 3000 4000 5000



MASS GRADING LAYOUT MAP



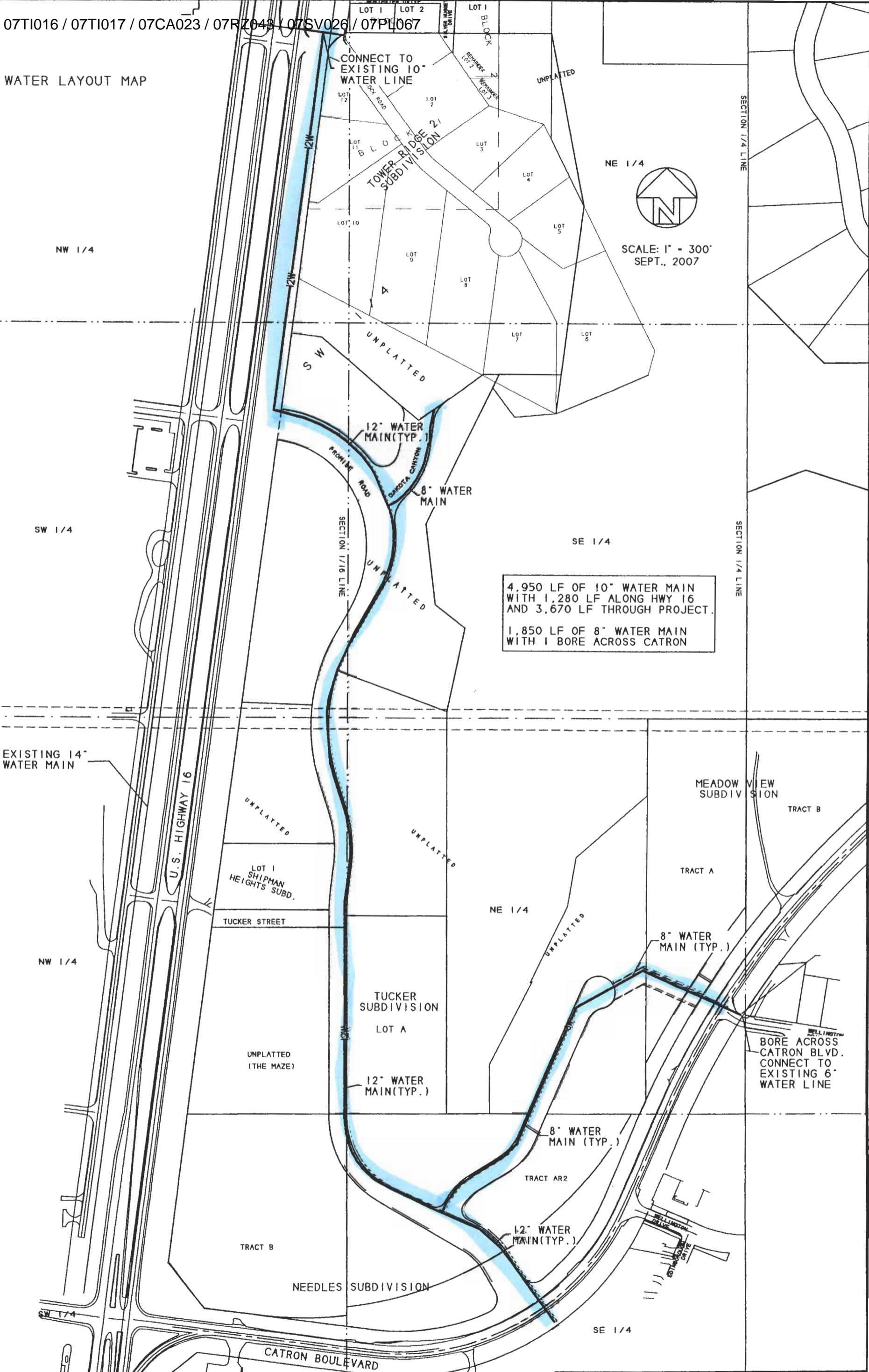
SCALE: 1" = 300'  
SEPT., 2007

4,950 LF OF 10" WATER MAIN  
WITH 1,280 LF ALONG HWY 16  
AND 3,670 LF THROUGH PROJECT.

1,850 LF OF 8" WATER MAIN  
WITH 1 BORE ACROSS CATRON



WATER LAYOUT MAP

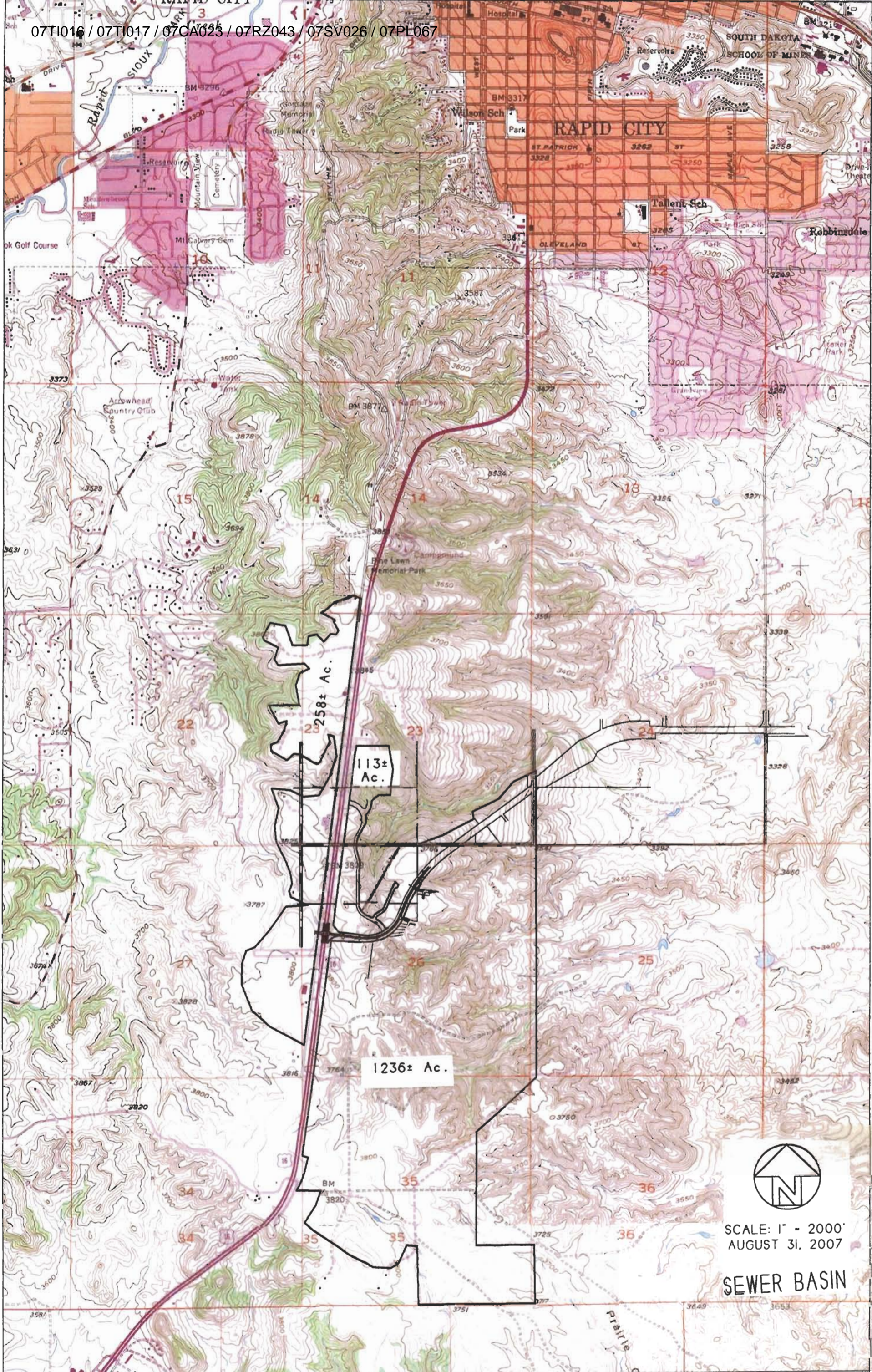


SCALE: 1" = 300'  
SEPT., 2007

4,950 LF OF 10" WATER MAIN  
WITH 1,280 LF ALONG HWY 16  
AND 3,670 LF THROUGH PROJECT.  
1,850 LF OF 8" WATER MAIN  
WITH 1 BORE ACROSS CATRON



07T1016 / 07T1017 / 07CA023 / 07RZ043 / 07SV026 / 07PL067



SCALE: 1" = 2000'  
AUGUST 31, 2007

SEWER BASIN



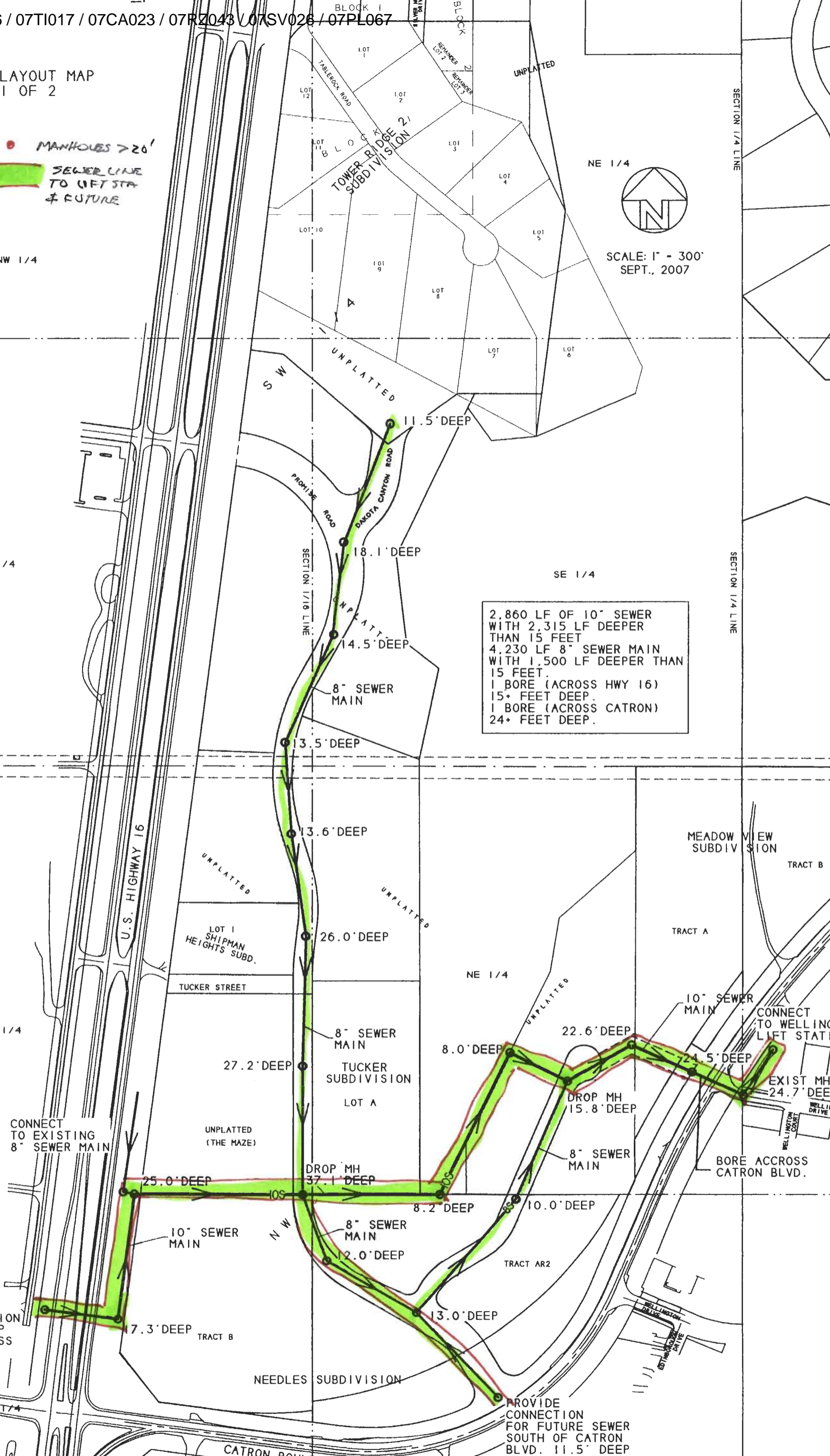
SEWER LAYOUT MAP  
SHEET 1 OF 2

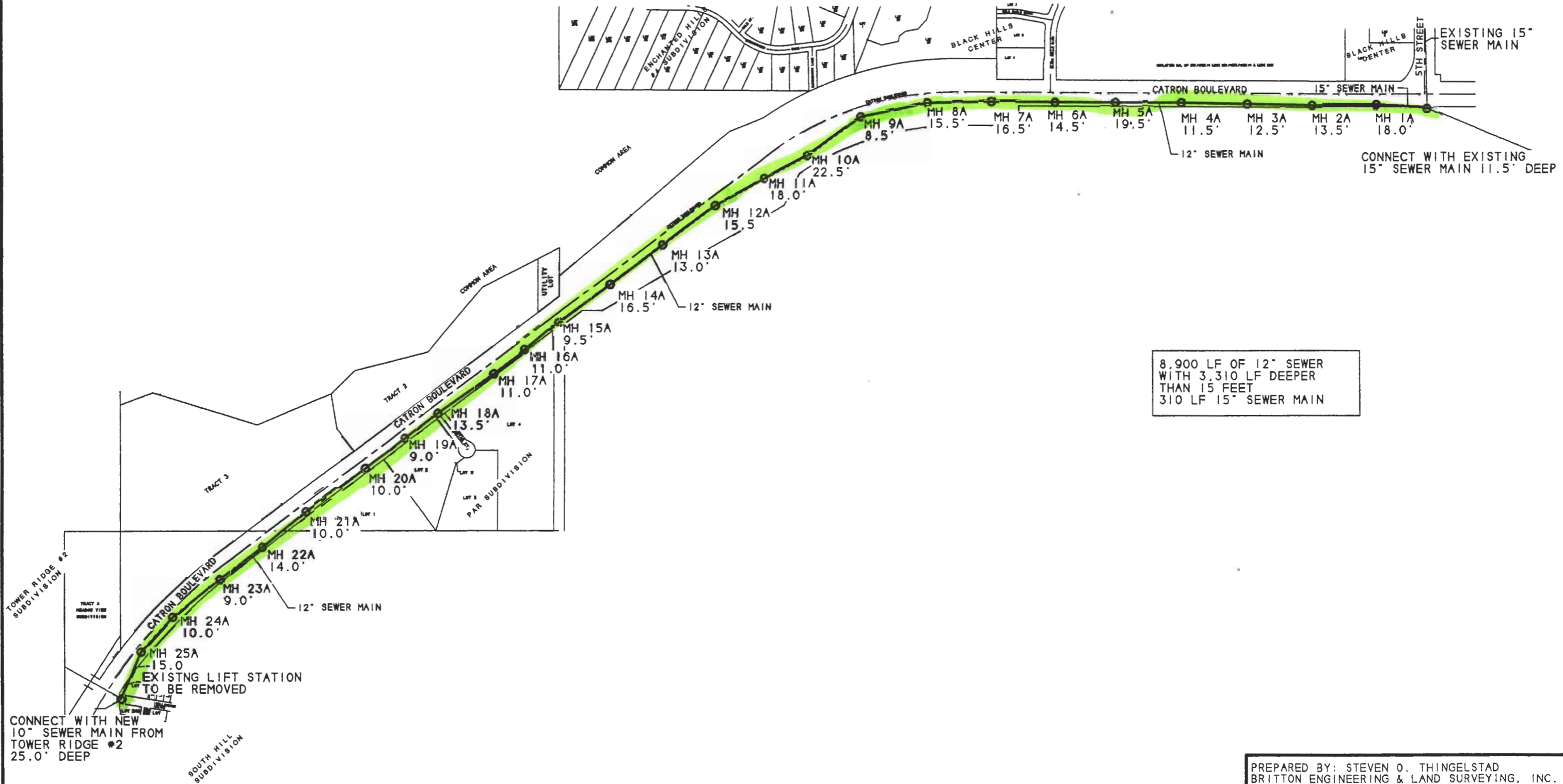
● MANHOLES > 20'  
SEWER LINE TO LIFT STA & FUTURE



SCALE: 1" = 300'  
SEPT., 2007

2,860 LF OF 10" SEWER WITH 2,315 LF DEEPER THAN 15 FEET  
4,230 LF 8" SEWER MAIN WITH 1,500 LF DEEPER THAN 15 FEET  
1 BORE (ACROSS HWY 16) 15+ FEET DEEP  
1 BORE (ACROSS CATRON) 24+ FEET DEEP





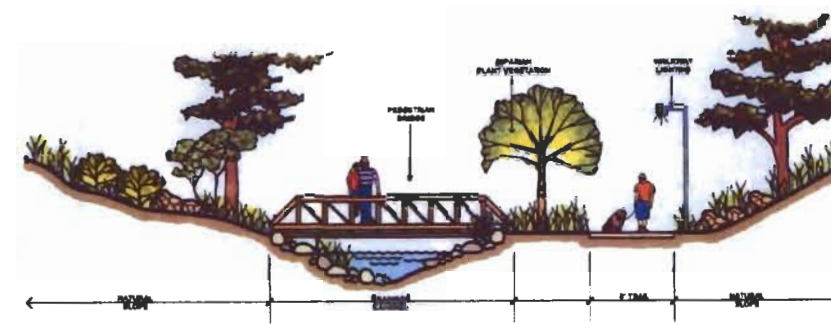
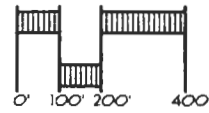
8,900 LF OF 12" SEWER  
WITH 3,310 LF DEEPER  
THAN 15 FEET  
310 LF 15" SEWER MAIN



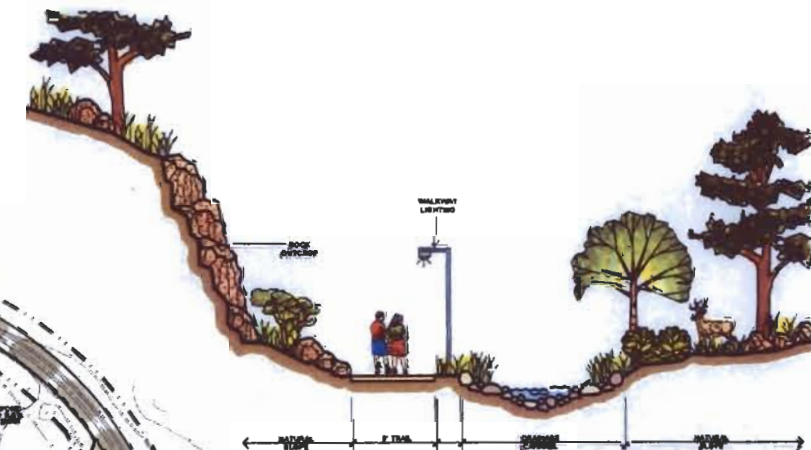
# Dakota Canyon Nature Preserve

Rapid City, South Dakota

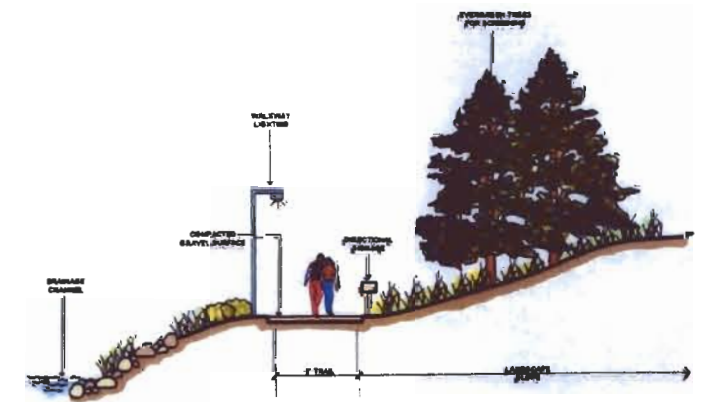
PROJECT NO.: R01-299  
 FILE NAME: clu299-SD2  
 DATE: SEPT. 5, 2001



**NATURE TRAIL - A**  
 SCALE: 1/8"=1'-0"



**NATURE TRAIL - C**  
 SCALE: 1/8"=1'-0"



**NATURE TRAIL - B**  
 SCALE: 1/8"=1'-0"