

PROPOSED A



WILLIAMS & ASSOCIATES
ARCHITECTURE, INC.

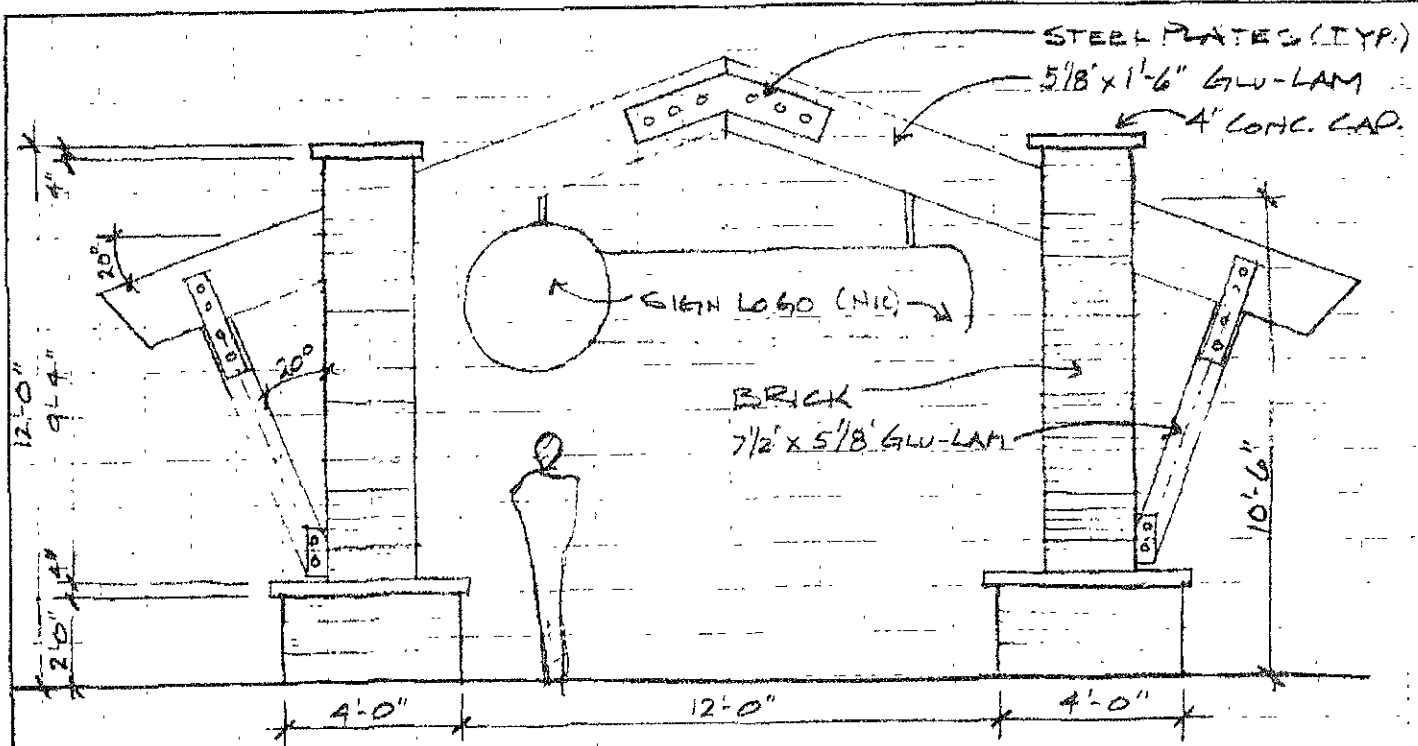
125 E. Colorado Blvd., Suite 2A
Spearfish, South Dakota 57783
(Ph) 605 642-2009 (Fax) 605 642-3339

PROJECT FOUNDERS PARK

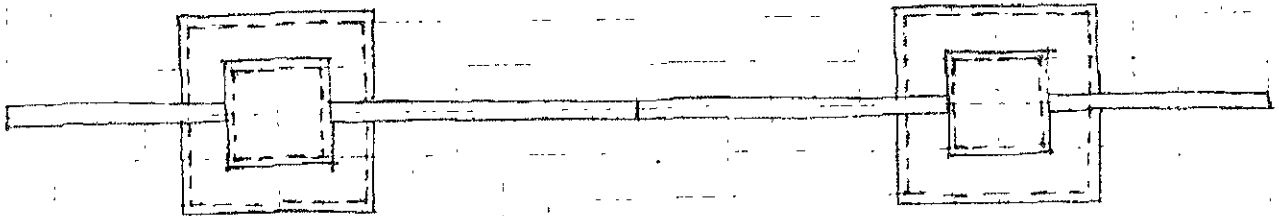
ATTENDEES _____

DATE 11/12/07

SHEET # _____



① SIGN 'A' ELEVATION
1/4"



② SIGN 'A' PLAN
1/4"

Proposed Sign.

08PD003

RECEIVED



WILLIAMS & ASSOCIATES
ARCHITECTURE, INC.

JAN 23 2008

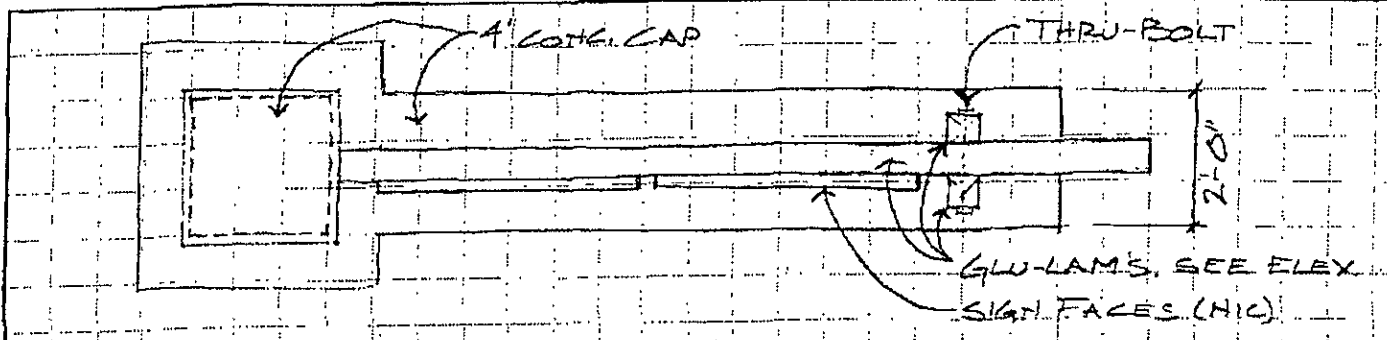
Rapid City Growth

125 E. Colorado Blvd. Suite 200
Spearfish, South Dakota 57783
(Ph) 605 642-2009 (Fax) 605 642-3339

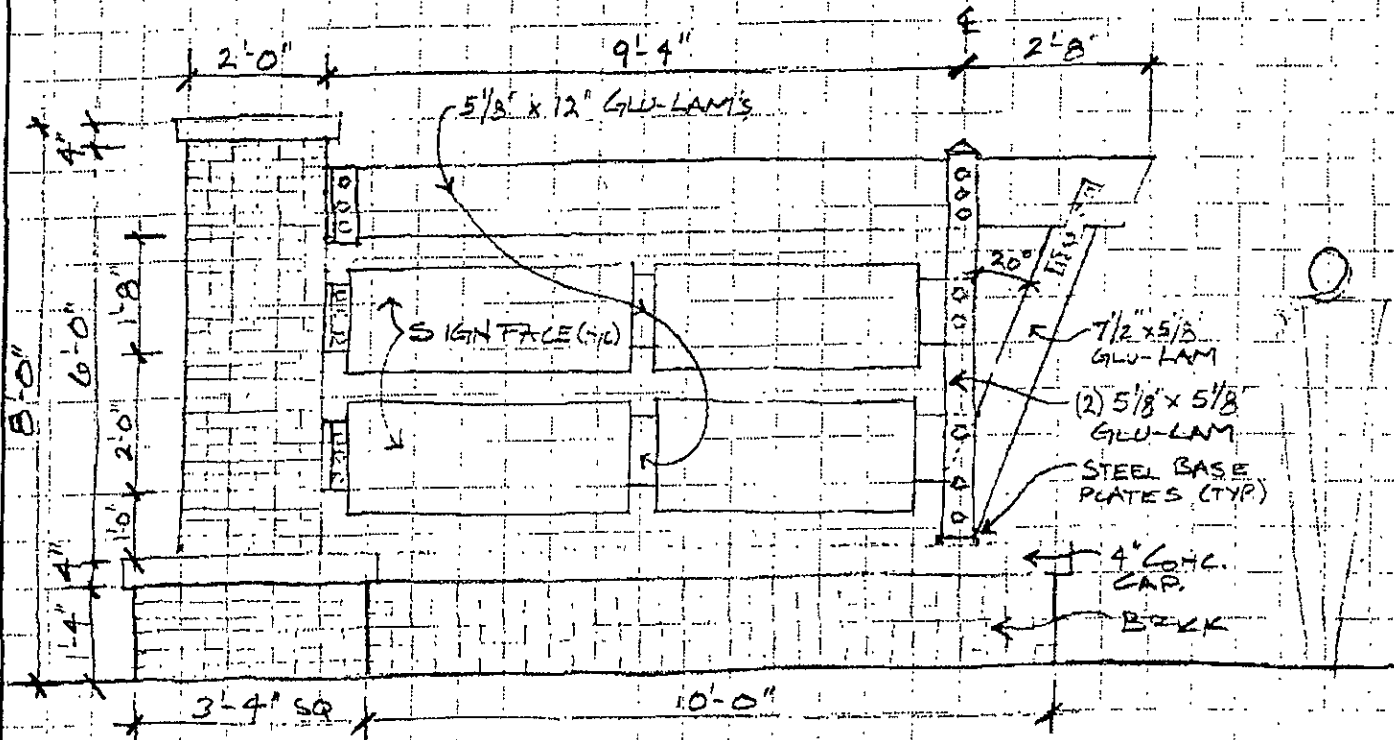
PROJECT FOUNDERS PARK

ATTENDEES _____

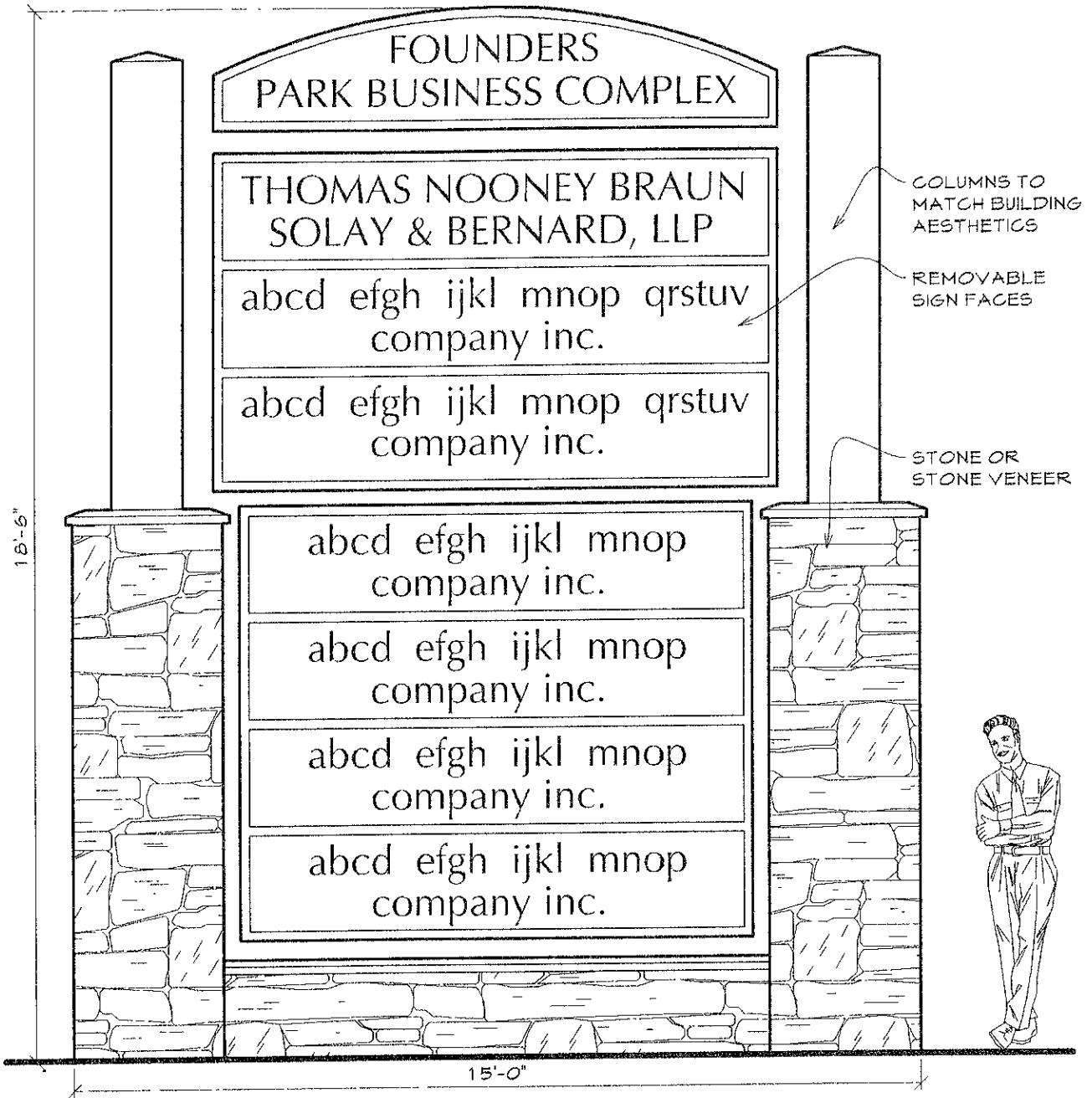
DATE 11/12/2007 SHEET # _____



① SIGN 'B' PLAN
3/8"



② SIGN 'B' ELEVATION
3/8"



SIGN TYPE "A"

SCALE 3/8" = 1'-0"