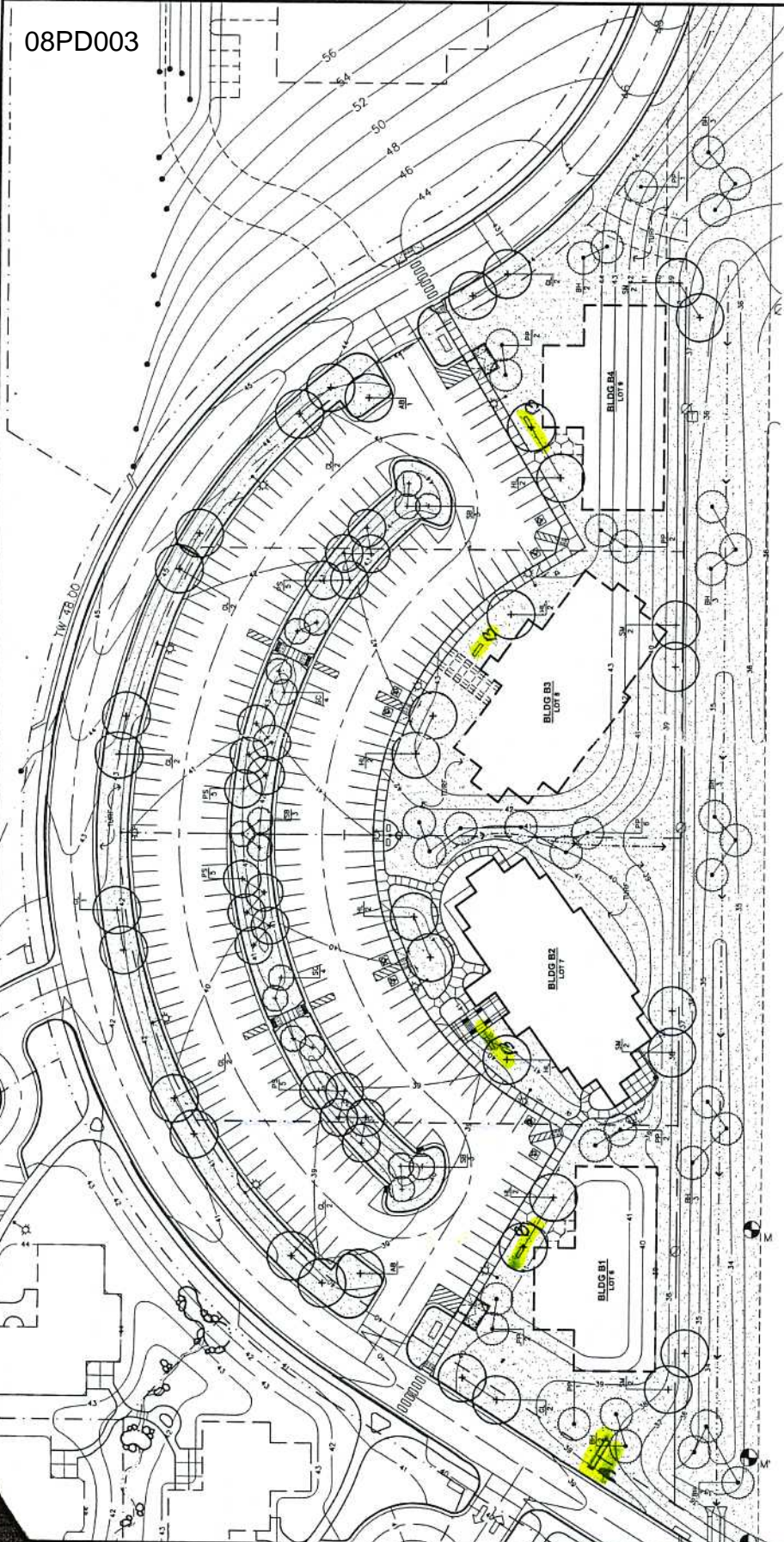
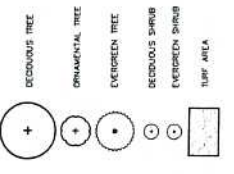


08PD003



LANDSCAPE SYMBOLS:



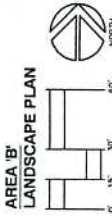
PLANT MATERIAL SCHEDULE

| KEY                     | QUANTITY | COMMON NAME                  | BOTANICAL NAME                          | SIZE      |
|-------------------------|----------|------------------------------|---|-----------|
| <b>DECIDUOUS TREES</b>  |          |                              |   |           |
| PS                      | 20       | Prunella Spirea Ash          | Prunella americana 'Autumn Blaze'       | 3" B&B    |
| PL                      | 10       | Prunella Spirea Ash          | Prunella americana 'Spiree'             | 2" B&B    |
| PL                      | 10       | Greeneye Livorn              | Illex coriaria 'Greeneye'               | 2" B&B    |
| SM                      | 0        | Japanese Spirea              | Spirea japonica 'Snowflake'             | 2.5" B&B  |
| <b>ORNAMENTAL TREES</b> |          |                              |   |           |
| SP                      | 9        | Aut. Brilliance Serviceberry | Amelanchier alnifolia 'Aut. Brilliance' | 1.75" B&B |
| SP                      | 8        | Spring Snow Crab             | Malus 'Spring Snow'                     | 1.75" B&B |
| <b>EVERGREEN TREES</b>  |          |                              |   |           |
| PP                      | 18       | Black Hills Spruce           | Picea glauca densata                    | 6" H, B&B |
| PP                      | 18       | Vegetation Free              | Picea canadensis                        | 6" H, B&B |

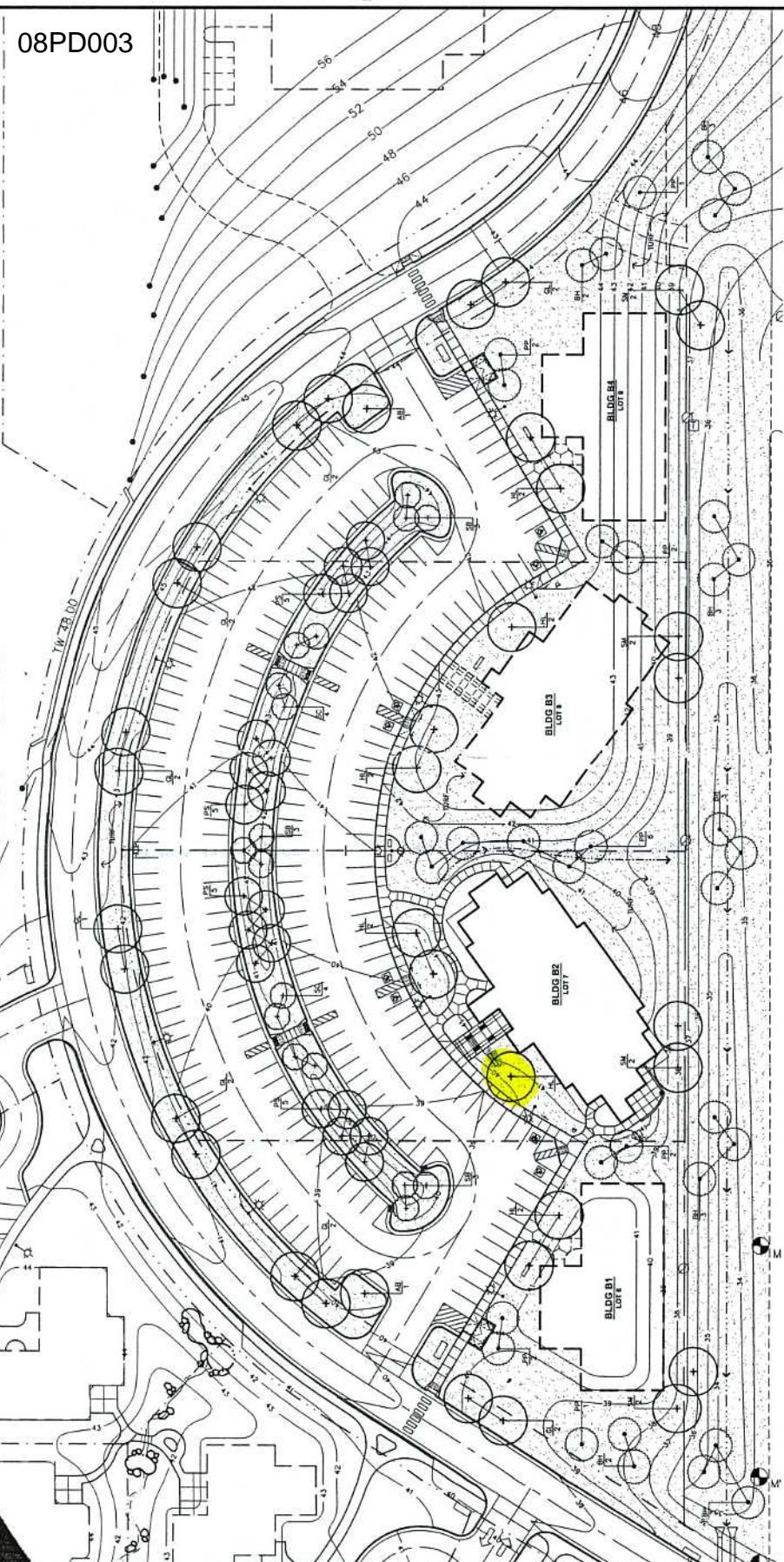
LANDSCAPE MATERIAL POINT TABLE

| DEVELOPED AREA                        | POINTS  | BLDG B1 LOT #1 | POINTS  | BLDG B2 LOT #2 | POINTS  | BLDG B3 LOT #3 | POINTS  | TOTAL   |
|---------------------------------------|---------|----------------|---------|----------------|---------|----------------|---------|---------|
| TOTAL LANDSCAPE POINTS REQUIRED       | 148,258 |                | 148,258 |                | 148,258 |                | 148,258 | 444,874 |
| ALLOWABLE R.O.W. LANDSCAPE POINTS     | 37,874  |                | 37,874  |                | 37,874  |                | 37,874  | 113,622 |
| SET LANDSCAPE POINTS                  |         |                |         |                |         |                |         |         |
| LARGE TREE                            | 20      | 2,000          | 40,000  | 2,000          | 40,000  | 2,000          | 40,000  | 124,000 |
| MEDIUM TREE                           | 10      | 1,000          | 20,000  | 1,000          | 20,000  | 1,000          | 20,000  | 62,000  |
| SMALL TREE                            | 40      | 4,000          | 80,000  | 4,000          | 80,000  | 4,000          | 80,000  | 244,000 |
| SHRUBS                                | 0       | 0              | 0       | 0              | 0       | 0              | 0       | 0       |
| EVERGREEN TREE                        | 0       | 0              | 0       | 0              | 0       | 0              | 0       | 0       |
| TOTAL SET LANDSCAPE POINTS            |         | 148,000        | 148,000 | 148,000        | 148,000 | 148,000        | 148,000 | 592,000 |
| R.O.W. LANDSCAPE POINTS               |         |                |         |                |         |                |         |         |
| BLDG B1 LOT #1                        |         |                |         |                |         |                |         |         |
| BLDG B2 LOT #2                        |         |                |         |                |         |                |         |         |
| BLDG B3 LOT #3                        |         |                |         |                |         |                |         |         |
| TOTAL R.O.W. LANDSCAPE POINTS         |         |                |         |                |         |                |         |         |
| TOTAL SET AND R.O.W. LANDSCAPE POINTS |         |                |         |                |         |                |         |         |

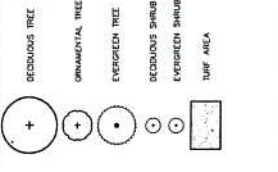
A - Entry "SIGN A"  
 B - Building "SIGN B"  
 Sign Location



08PD003



LANDSCAPE SYMBOLS:



PLANT MATERIAL SCHEDULE

| NO.                     | QUANTITY | COMMON NAME            | BOTANICAL NAME        | SIZE      |
|-------------------------|----------|------------------------|-----------------------|-----------|
| <b>DECIDUOUS TREES</b>  |          |                        |                       |           |
| 1                       | 1        | Fraxinus americana     | White Ash             | 2" B&B    |
| 2                       | 1        | Prunus americana       | Black Cherry          | 2" B&B    |
| 3                       | 1        | Thuja occidentalis     | Blue Spruce           | 2" B&B    |
| 4                       | 1        | Thuja occidentalis     | Green Spruce          | 2" B&B    |
| 5                       | 1        | Thuja occidentalis     | White Spruce          | 2" B&B    |
| <b>ORNAMENTAL TREES</b> |          |                        |                       |           |
| 6                       | 1        | Amelanchier canadensis | Allegheny Spangletree | 1.75" B&B |
| 7                       | 1        | Malus baccata          | Malus                 | 1.75" B&B |
| 8                       | 1        | Malus baccata          | Malus                 | 1.75" B&B |
| <b>EVERGREEN TREES</b>  |          |                        |                       |           |
| 9                       | 1        | Thuja occidentalis     | Blue Spruce           | 1.75" B&B |
| 10                      | 1        | Thuja occidentalis     | Green Spruce          | 1.75" B&B |
| 11                      | 1        | Thuja occidentalis     | White Spruce          | 1.75" B&B |
| <b>SHRUBS</b>           |          |                        |                       |           |
| 12                      | 1        | Prunella sp.           | Prunella              | 4" B&B    |
| 13                      | 1        | Prunella sp.           | Prunella              | 4" B&B    |

LANDSCAPE MATERIAL POINT TABLE

| ITEM             | QUANTITY  | AREA             | POINT VALUE | TOTAL POINTS  |
|------------------|-----------|------------------|-------------|---------------|
| DECIDUOUS TREES  | 5         | 31.433 SF        | 1.00        | 31.433        |
| ORNAMENTAL TREES | 3         | 14.286 SF        | 1.00        | 14.286        |
| EVERGREEN TREES  | 3         | 14.286 SF        | 1.00        | 14.286        |
| SHRUBS           | 2         | 2.857 SF         | 1.00        | 2.857         |
| TURF             | 1         | 1.429 SF         | 1.00        | 1.429         |
| <b>TOTAL</b>     | <b>14</b> | <b>64.287 SF</b> | <b>1.00</b> | <b>64.287</b> |

RECEIVED

JAN 23 2006  
Rapid City Growth and Development Department

Sign Location

