

# Parking Lot Exhibit

## Proposed Lot 3 of LJS Subdivision

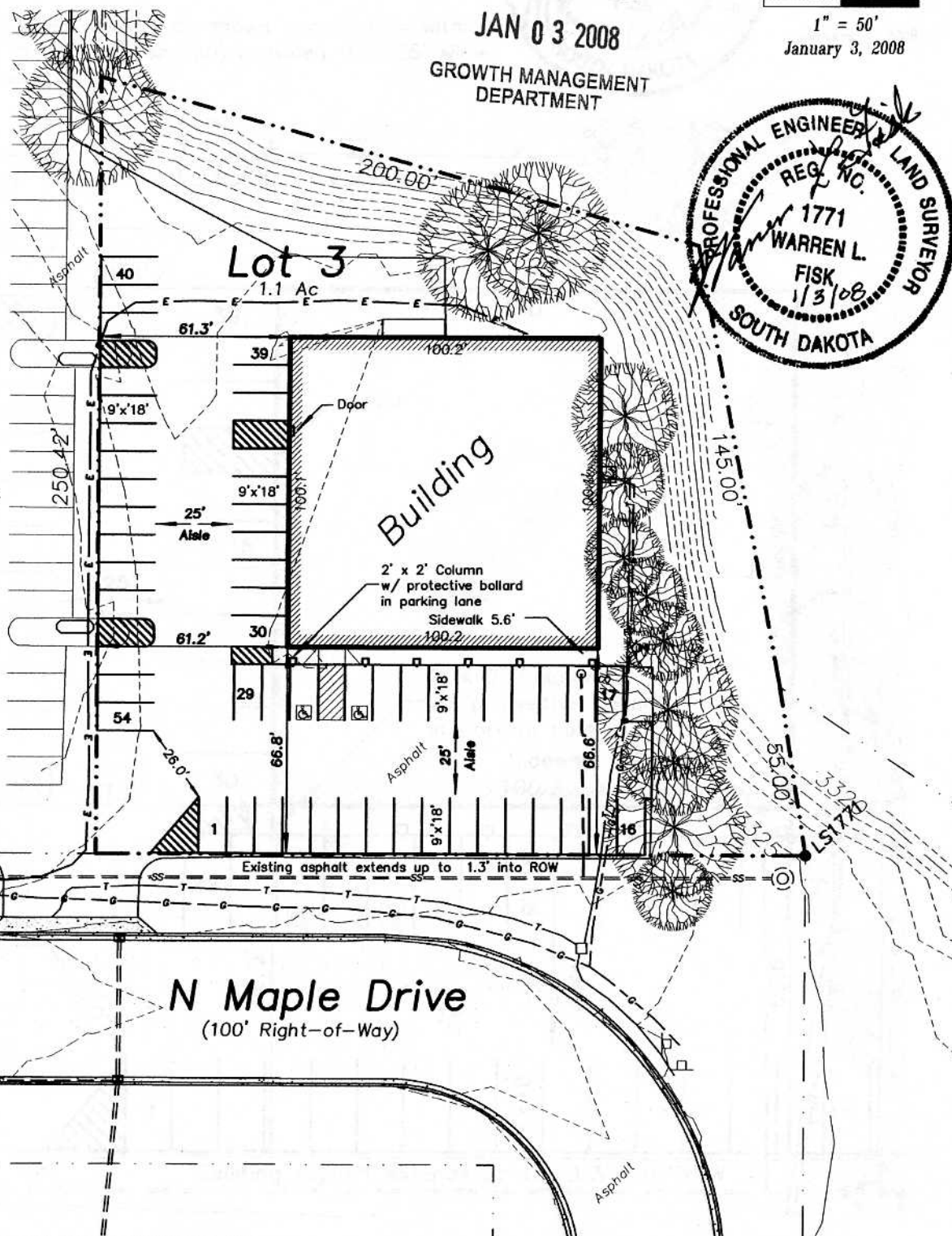
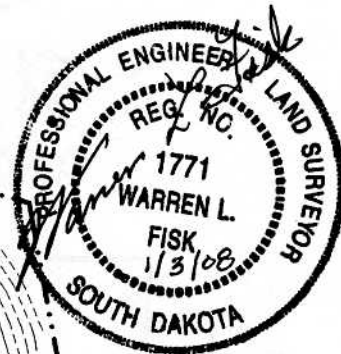
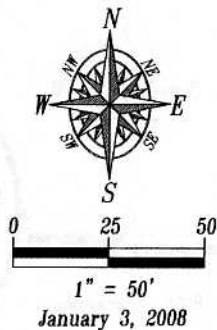
formerly a portion of the unplatted balance of the NW 1/4 of Section 30, T2N, R8E, BHM,

Rapid City, Pennington County, South Dakota

RECEIVED

JAN 03 2008

GROWTH MANAGEMENT DEPARTMENT



Asphalt

### N Maple Drive

(100' Right-of-Way)