

LAYOUT PLAT

SPRING CREEK ESTATES SUBDIVISION

PLAT OF LOT 1, SPRING CREEK ESTATES SUBDIVISION,

Located in NE 1/4 SE 1/4 SECTION 3, T1S, R7E, BHM,
PENNINTON COUNTY, SOUTH DAKOTA

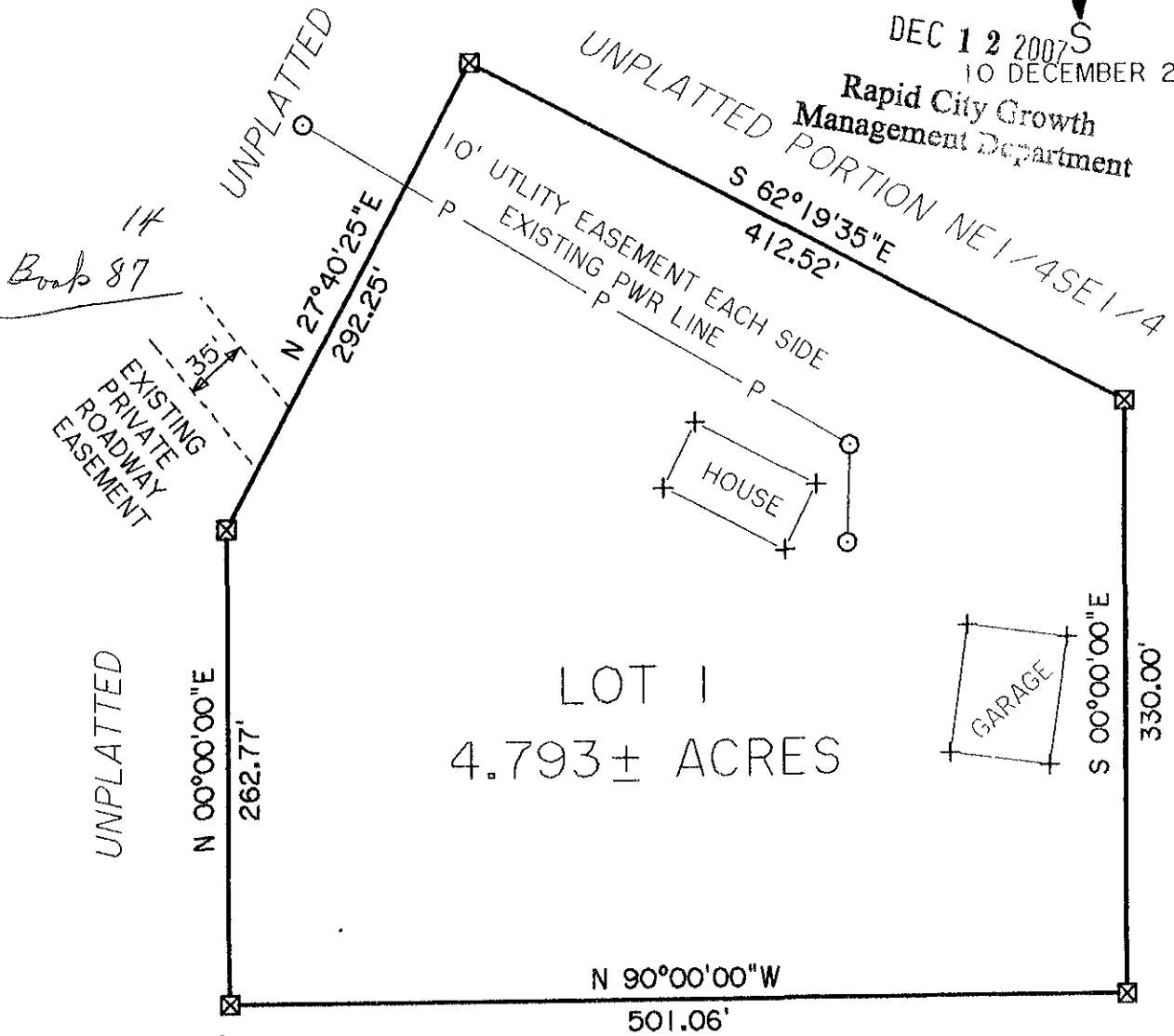
☒ SET 5/8" RB W/ CAP #6251

NOTE: 10 FOOT UTILITY EASEMENT SHALL BE LOCATED ON THE INTERIOR SIDE OF ALL LOT LINES.



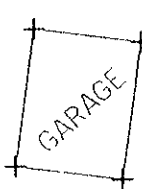
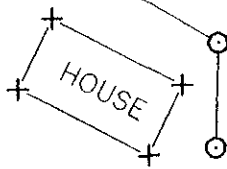
DEC 12 2007
10 DECEMBER 2007

Rapid City Growth
Management Department

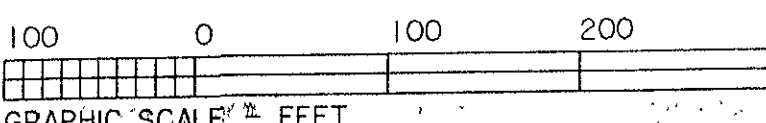


14
Book 87

EXISTING PRIVATE ROADWAY EASEMENT



LOT 1
4.793 ± ACRES



UNPLATTED PORTION NE 1/4 SE 1/4

PLAT PREPARED BY:
HANSON SURVEYING AND MAPPING
832 HORACE MANN DR
RAPID CITY, SD 57701
605-388-9652

UNPLATTED PORTION NE 1/4 SE 1/4