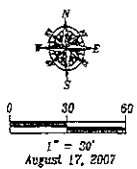


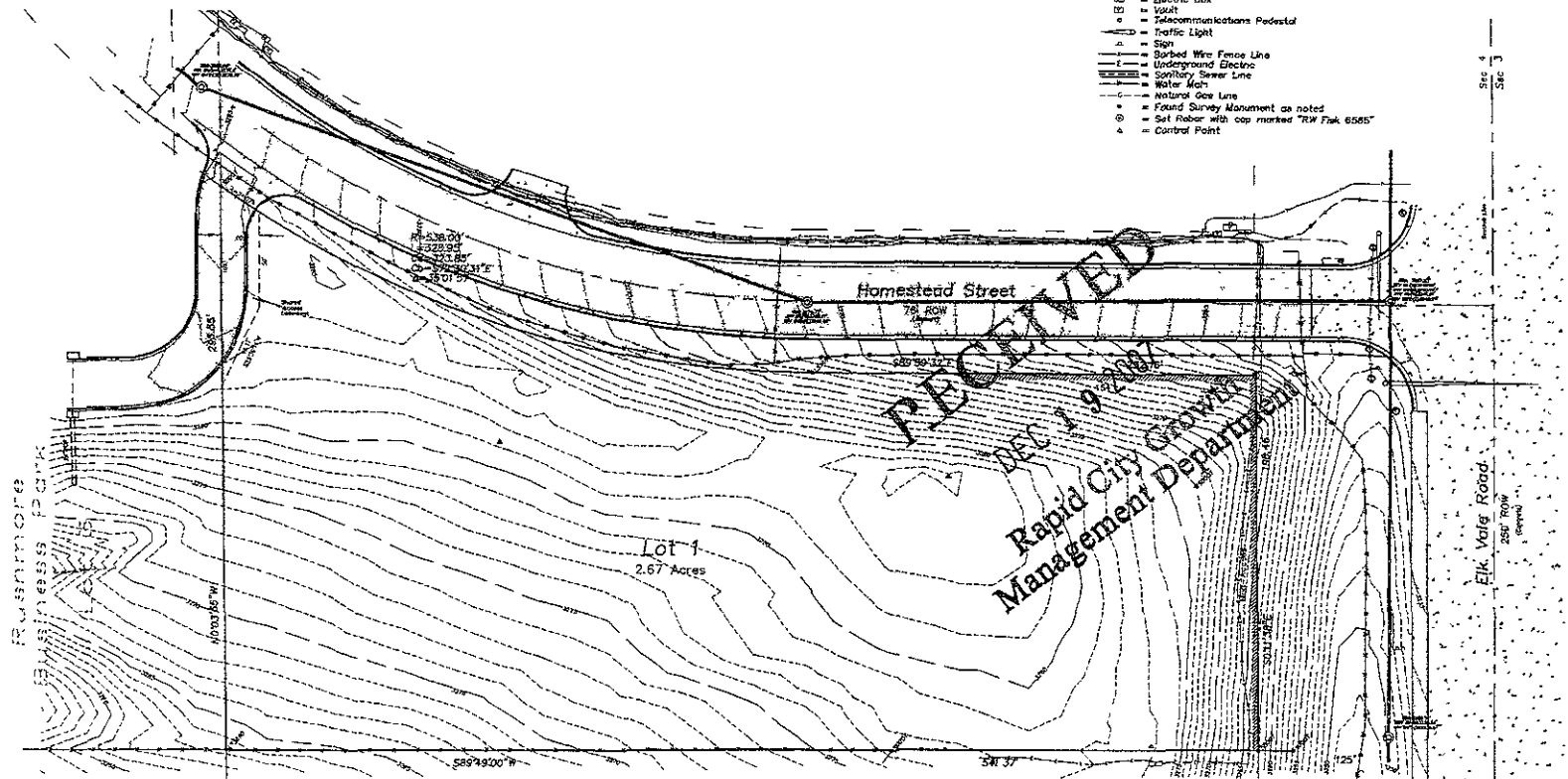
SURVEYOR'S NOTES

Utilities shown are from visual inspection, sketches provided by individual service providers and Utility Locates performed by South Dakota One Call, Ticket Number 0722270730. The actual location of utilities and service lines may vary from the information shown hereon.
 Bench Mark: GPS Observation



LEGEND

- ⊕ Sanitary Sewer Manhole (Unless noted)
- ⊕ Fire Hydrant
- ⊕ Water Valve
- ⊕ Electrical Manhole
- ⊕ Electric Box
- ⊕ Vault
- ⊕ Telecommunications Pedestal
- ⊕ Traffic Light
- ⊕ Sign
- Barbed Wire Fence Line
- Underground Electric
- Sanitary Sewer Line
- Water Main
- Natural Gas Line
- ⊕ Found Survey Monument as noted
- ⊕ Set Rebar with cap marked "RW Flak 6565"
- Control Point



Topographic Map and Boundary Survey
 Lot 1, Block 1
 Hilltop Business Park Subdivision
 located in the NET/4 of Section 4, T1N, R8E, B.H.M.
 Rapid City, Pennington County, South Dakota

1002 Main Street
 P.O. Box 6554
 Rapid City, South Dakota
 57709
 (605) 241-1348
 (605) 241-1112 (fax)

Fisk Land Surveying
 & Consulting
 Engineers, Inc.



Surveyed by M. Bl.
 Date: 8/15/07
 Drawn by: RW, BL
 Date: 8/17/07
 Checked by: RW
 Revisions

Project No.
 07-08-03

Existing
 Topography

D E L I M I N A T I V E