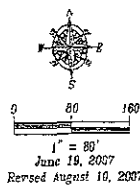


Lot 3 Landscape Points	
Lot	46,760 sq ft
Buildings	- 10,030 sq ft
Required points	36,730 pts
3 Large Tree	10,000 pts
2 Medium Tree	2,000 pts
3 Small Tree	2,500 pts
2,343 Grass Swtch	- 23,430 pts
TOTAL	37,830 pts
Required points surveys	36,730 pts 1,000 pts



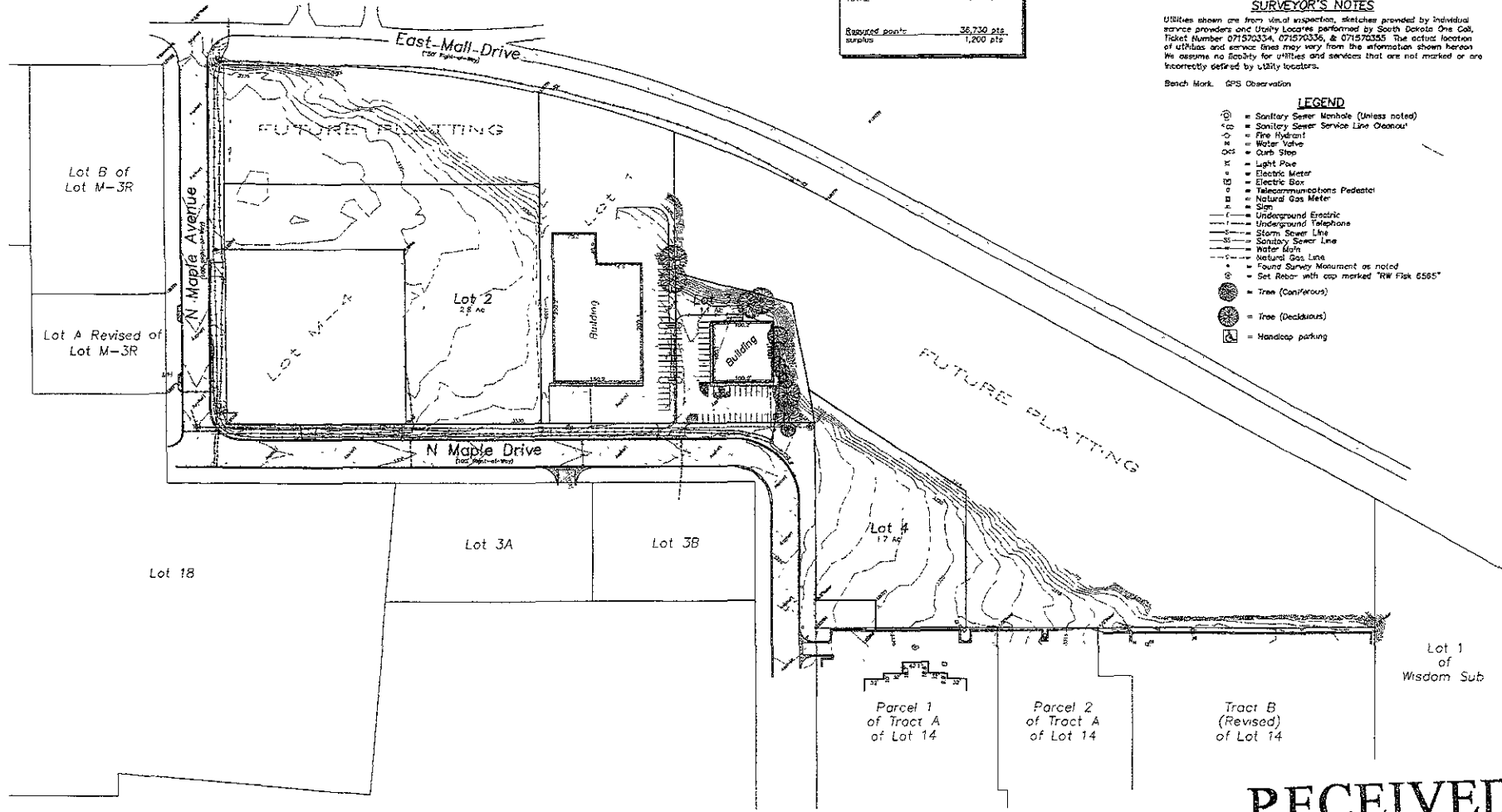
SURVEYOR'S NOTES

Utilities shown are from visual inspection, sketches provided by individual service providers and Utility Locates performed by South Dakota One Call, Ticket Number 071570334, 071570336, & 071570355. The actual location of utilities and service lines may vary from the information shown hereon. We assume no liability for utilities and services that are not marked or are incorrectly defined by utility locators.

Bench Mark: GPS Observation

LEGEND

- ⊙ = Sanitary Sewer Manhole (Unless noted)
- ⊙ = Sanitary Sewer Service Line Cleanout
- ⊙ = Fire Hydrant
- W = Water Valve
- OC = Curb Stop
- ⊙ = Light Pole
- ⊙ = Electric Meter
- ⊙ = Electric Box
- ⊙ = Telecommunications Pedestal
- ⊙ = Natural Gas Meter
- ⊙ = Sign
- () — = Underground Electric
- () — = Underground Telephone
- () — = Storm Sewer Line
- () — = Sanitary Sewer Line
- () — = Water Main
- () — = Natural Gas Line
- ⊙ = Found Survey Monument as noted
- ⊙ = Set Rebar with cap marked "RW Fisk 6565"
- ⊙ = Tree (Coniferous)
- ⊙ = Tree (Deciduous)
- ⊙ = Handicap parking



Fisk Land Surveying & Consulting Engineers, Inc.
 1024 Main Street - P.O. Box 854
 Rapid City, SD 57702 (605) 341-1112 (N)
 fsk@fiskland.com

The information herein is copyright material and specific to the date, client and purpose as stated.
 No warranty or guarantee is expressed or implied to any party for any other purpose at any time hereon as stated.

Topographic Map and Boundary Survey
 Lots 2, 3, & 4 of LJS Subdivision
 formerly a portion of the unplatted balance of the NW 1/4
 of Section 30, T2N, R8E, B.H.M.
 Rapid City, Pennington County, South Dakota

Surveyed by	MLBL
Date	6/15/07
Drawn by	RWF, B.
Date	5/15/07
Checked by	RWF
Revisions	-6/10/07 Landscape

Project No.	06-10-04
Sheet	1 of 1

RECEIVED

OCT 29 2007