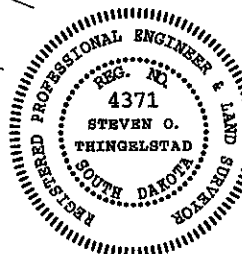
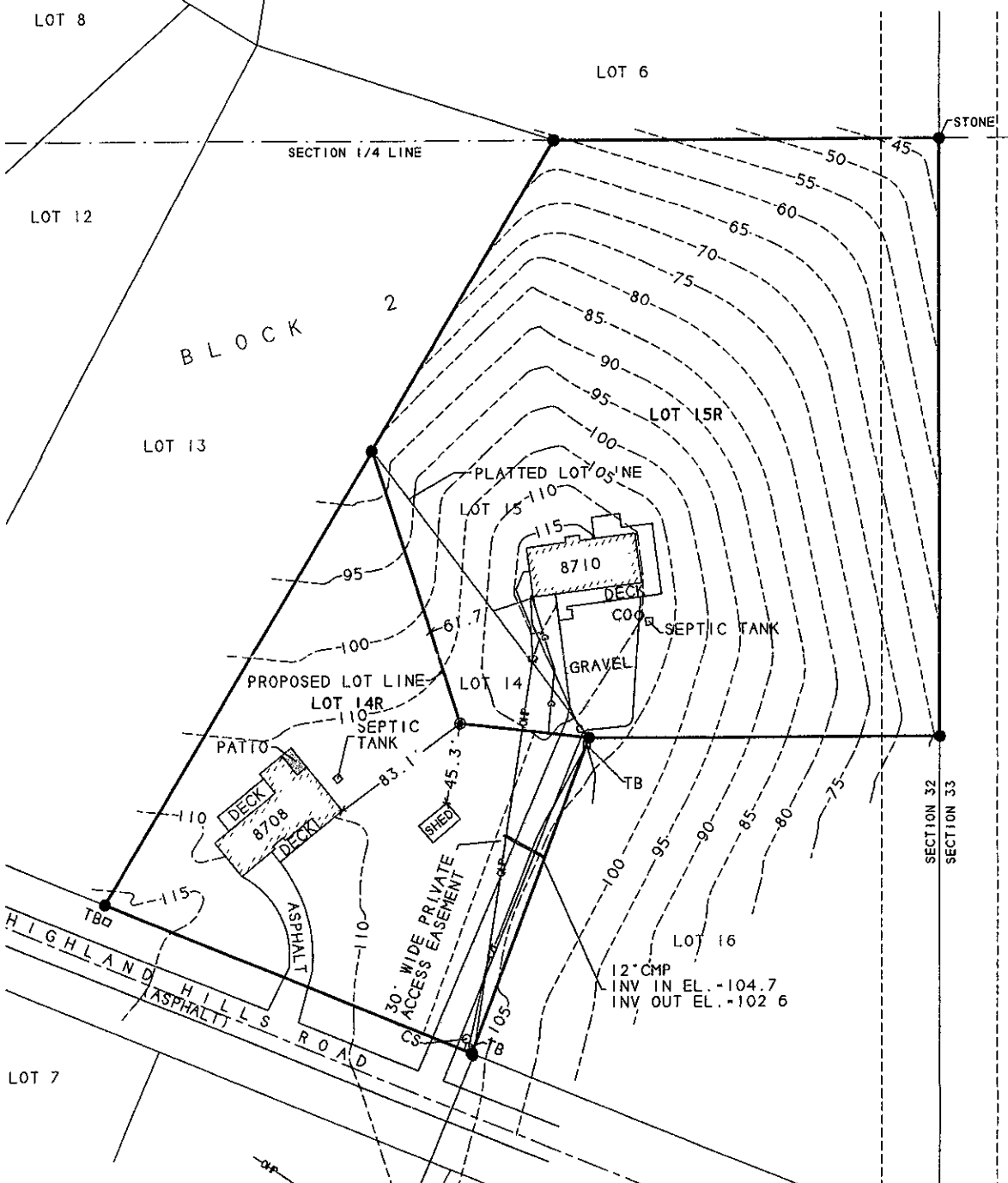


LAYOUT OF
LOT 14R & LOT 15R OF BLOCK 2 OF HIGHLAND HILLS SUBDIVISION
(FORMERLY LOT 14 AND LOT 15 OF BLOCK 2 OF HIGHLAND HILLS SUBDIVISION)
LOCATED IN NE 1/4 OF SE 1/4 OF SECTION 32, T1N. R7E B.H.M.
PENNINGTON COUNTY, SOUTH DAKOTA



SCALE: 1" = 60'
DECEMBER 13, 2007



PREPARED BY: STEVEN O THINGELSTAD
BRITTON ENGINEERING & LAND SURVEYING, INC
8035 BLACK HAWK ROAD, SUITE #5, BLACK HAWK
CITY, SD 57007 TEL: 605/716-7888