

Point Legend

- = Small Tree (deciduous) 14 @ 500 = 7,000
- = Small Tree (deciduous) 2 @ 300 = 1,000
- = Small Tree (coniferous) 9 @ 500 = 4,500
- = Small Tree (coniferous) 7 @ 250 = 1,750
- ⊙ = Shade 37,063 @ 10 = 40,410
- = Turf 4

Points Provided = 70,440

Lot Area = 57,010
 Building Area = 6,000
 Pavement Area = 5,010
 Surplus Points = 18,430

LEGEND

- = Sanitary Sewer Manhole (Unless noted)
- = Fire Hydrant
- = Water Valve
- = Electrical Manhole
- = Electric Box
- = Vault
- = Telecommunications Pedestal
- = Traffic Light
- = Sign
- = Barbed Wire Fence Line
- = Underground Electric
- = Sanitary Sewer Line
- = Water Main
- = Natural Gas Line
- = Easement/Encroachment (if noted)
- = Setback/Encroachment Marker (See File 0500)
- = Easement Point



0 20 40
 1" = 20'
 December 3, 2007

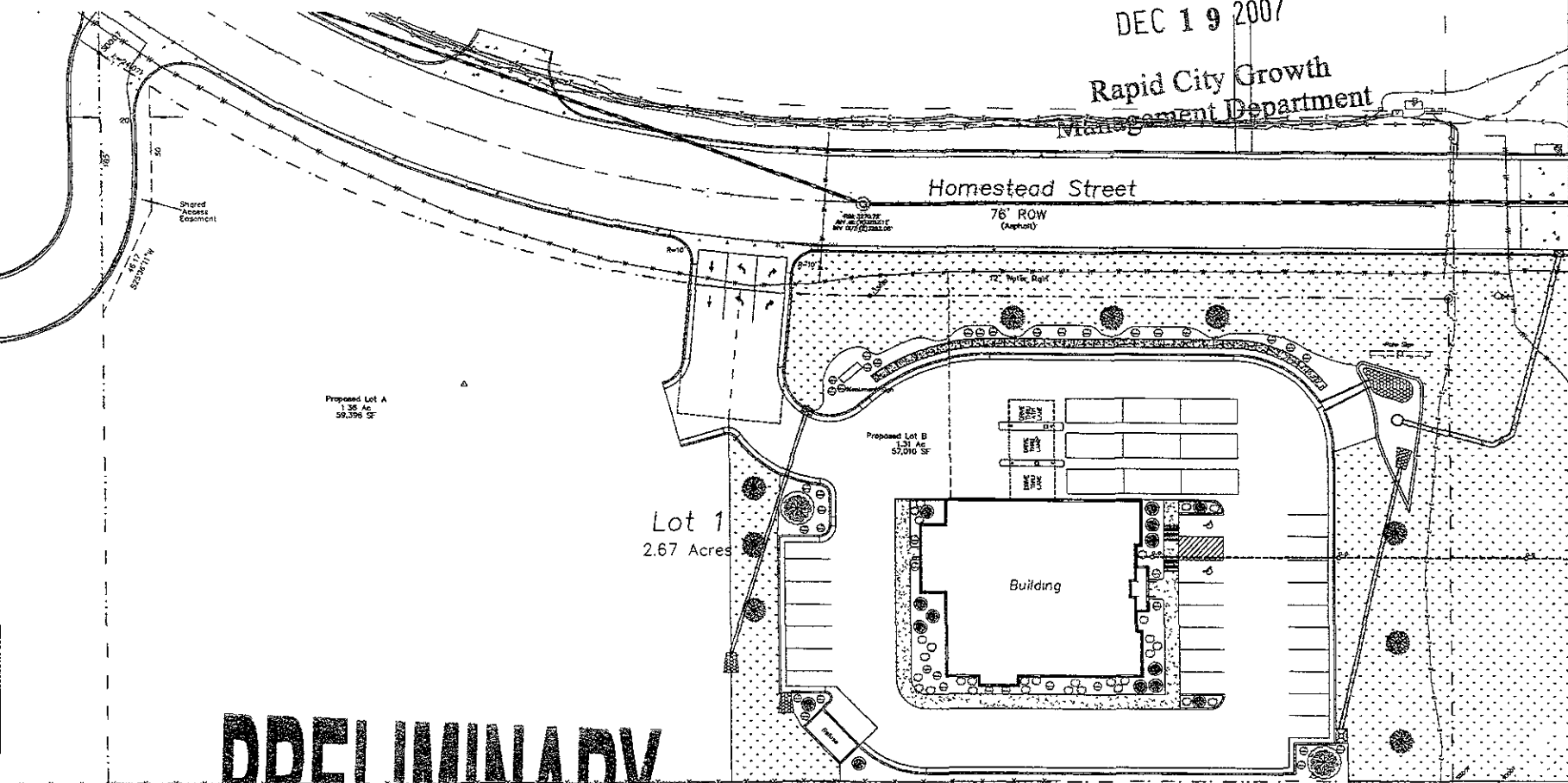
SURVEYOR'S NOTES

Utilities shown are from visual inspection, sketches provided by individual service providers and 11025' locates performed by South Dakota One Call, Ticket No. 072270730. The actual location of utilities and service lines may vary from the information shown hereon.
 Bench Mark: GPS Observation

RECEIVED

DEC 19 2007

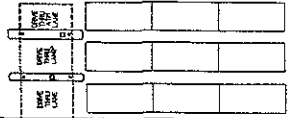
Rapid City Growth
 Management Department



Proposed Lot A
 1.96 Ac.
 59,398 SF

Proposed Lot B
 1.31 Ac.
 57,010 SF

Lot 1
 2.67 Acres



Building

Preliminary Site Plan

Lot 1, Block 1
 Hilltop Business Park Subdivision
 located in the NE 1/4 of Section 4, T1N, R8E, B.H.M.
 Rapid City, Pennington County, South Dakota

1222 Main Street
 P.O. Box 2354
 Rapid City, South Dakota
 57109
 (605) 346-1530
 (605) 346-1152 (fax)

Fisk Land Surveying
 & Consulting
 Engineers, Inc.



Surveyed by ML, BL
 Date 6/5/07
 Drawn by RWF
 Date 12/3/07
 Checked by WF
 Revisions

Project No.
 07-08-03

Landscape
 Plan

PRELIMINARY