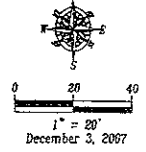


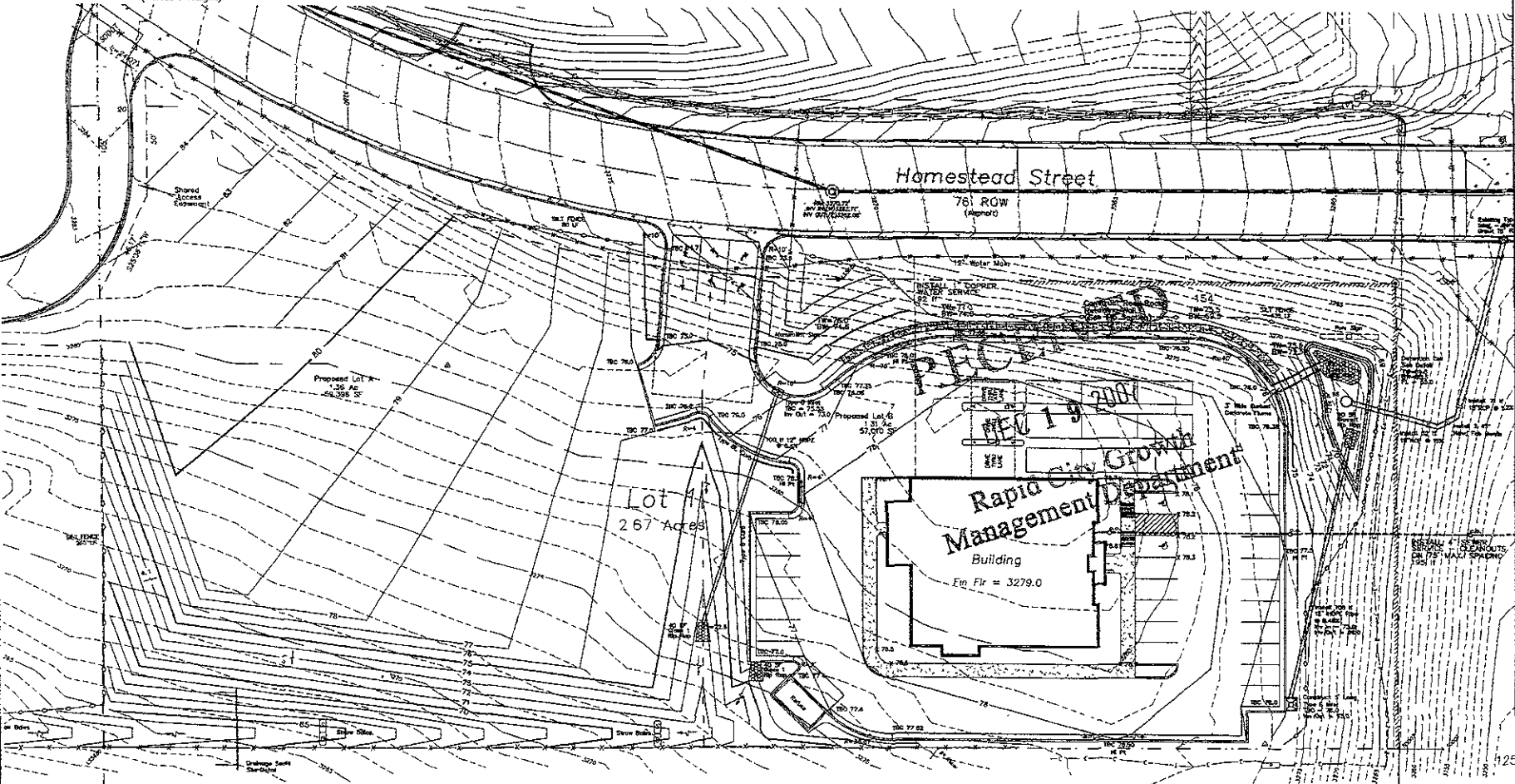
LEGEND

- Sanitary Sewer Manhole (Unless noted)
- ⊕ Fire Hydrant
- ⊕ Water Valve
- ⊕ Electrical Manhole
- ⊕ Electric Box
- ⊕ Vault
- ⊕ Telecommunications Pedestal
- ⊕ Traffic Light
- ⊕ Sign
- ⊕ Barbed Wire Fence Line
- ⊕ Underground Electric
- ⊕ Sanitary Sewer Line
- ⊕ Water Main
- ⊕ Natural Gas Line
- ⊕ Found Survey Monument as noted
- ⊕ Set Rebar with cap marked "RW Flak 6565"
- ⊕ Control Point



SURVEYOR'S NOTES

Utilities shown are from visual inspection sketches provided by individual service providers and Utility Locating performed by South Dakota One Call, Ticket No. 072226130. The actual location of utilities and service lines may vary from the information shown herein.
 Bench Mark: GPS Observation



Preliminary Site Plan
 Lot 1, Block 1, Subdivision
 Hilltop Business Park
 located in the NE1/4 of Section 4, T1N, R8E, B.H.M.
 Rapid City, Pennington County, South Dakota

1107 Main Street
 P.O. Box 8104
 Rapid City, South Dakota
 57709
 (605) 348-1526
 (605) 341-1112 (Fax)

Fisk Land Surveying
 & Consulting, Inc.
 Engineers, Inc.



Surveyed by ML
 Date: 8/15/07
 Drawn by: BW
 Date: 12/3/07
 Checked by: W
 Revisors:

Project No. 07-06-03

Grading Plan

LEGEND

- ⊕ = Sanitary Sewer Manhole (Unless noted)
- ⊕ = Fire Hydrant
- ⊕ = Water Valve
- ⊕ = Electrical Manhole
- ⊕ = Electric Box
- ⊕ = Vault
- ⊕ = Telecommunications Pedestal
- ⊕ = Traffic Light
- ⊕ = Sign
- = Barbed Wire Fence Line
- = Underground Electric
- = Sanitary Sewer Line
- = Water Main
- = Natural Gas Line
- ⊕ = Found Survey Monument as noted
- ⊕ = Set Fiber with cap marked "TW Fisk 6585"
- ⊕ = Control Point

SURVEYOR'S NOTES

Utilities shown are from visual inspection, sketches provided by individual service providers and Utility Locates performed by South Dakota Ticket Number 022701332. The actual location of utilities may vary from the information shown herein.

Bench Mark: GPS Observation

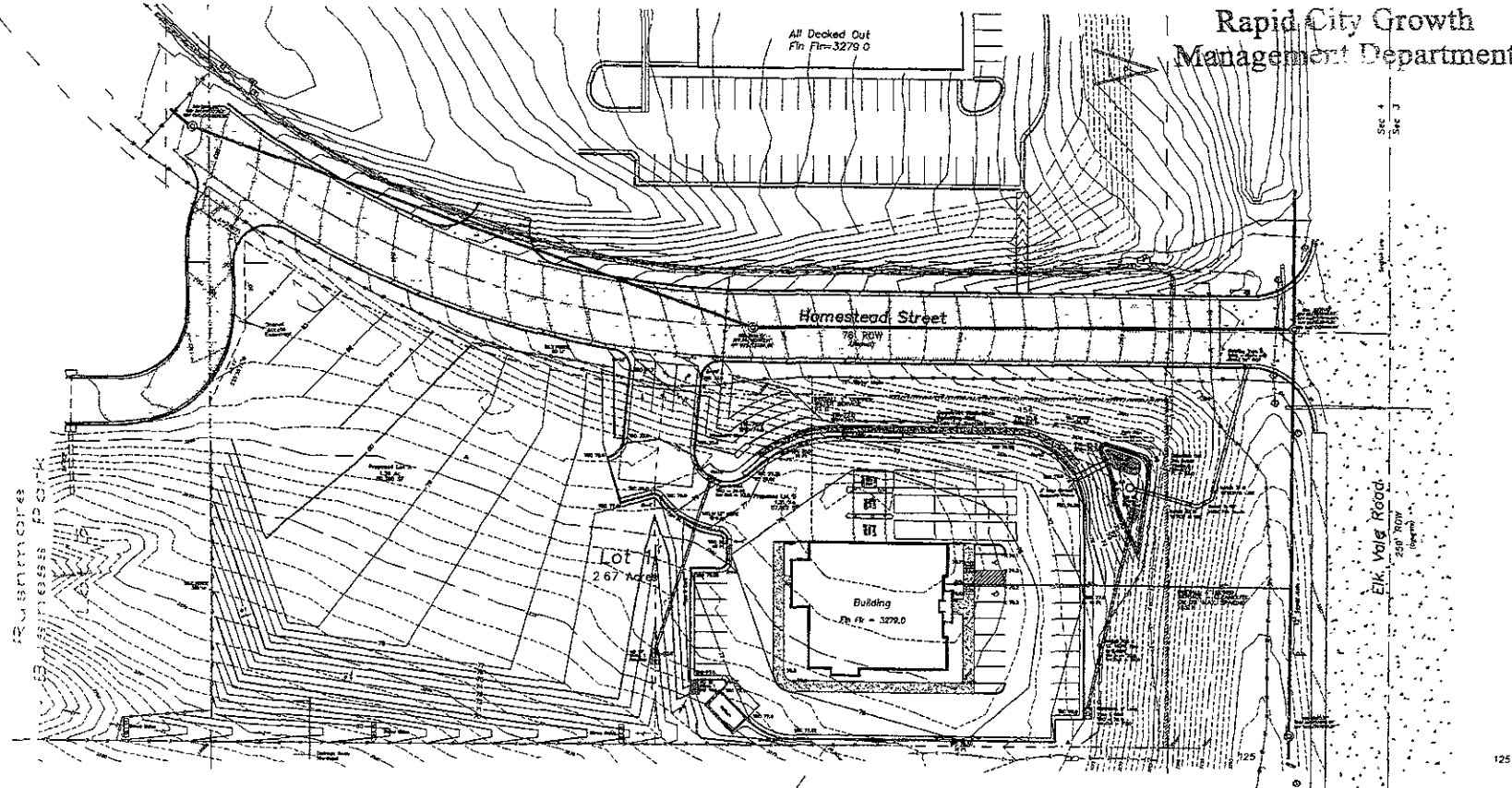


RECEIVED

1" = 50'
December 3, 2007

DEC 19 2007

Rapid City Growth Management Department



Rushmore Regional Industrial Park
Business Park

Rushmore Regional Industrial Park
Lot 2
Lot A of
Lot 1B

Preliminary Site Plan
Lot 1, Block 1

Hilltop Business Park, Subdivision
located in the NE1/4 of Section 4, T1N, R8E, B.H.M.
Rapid City, Pennington County, South Dakota

1022 Main Street
P.O. Box 8733
Rapid City, South Dakota
57708
(605) 344-1528
(605) 341-1115 (fax)

Fisk Land Surveying
& Consulting
Engineers, Inc.



Surveyed by: KL, B
Date: 8/15/07
Drawn by: RW
Date: 12/3/07
Checked by: WF
Revisions

Project No.
07-06-03

Grading
Plan

PRELIMINARY