

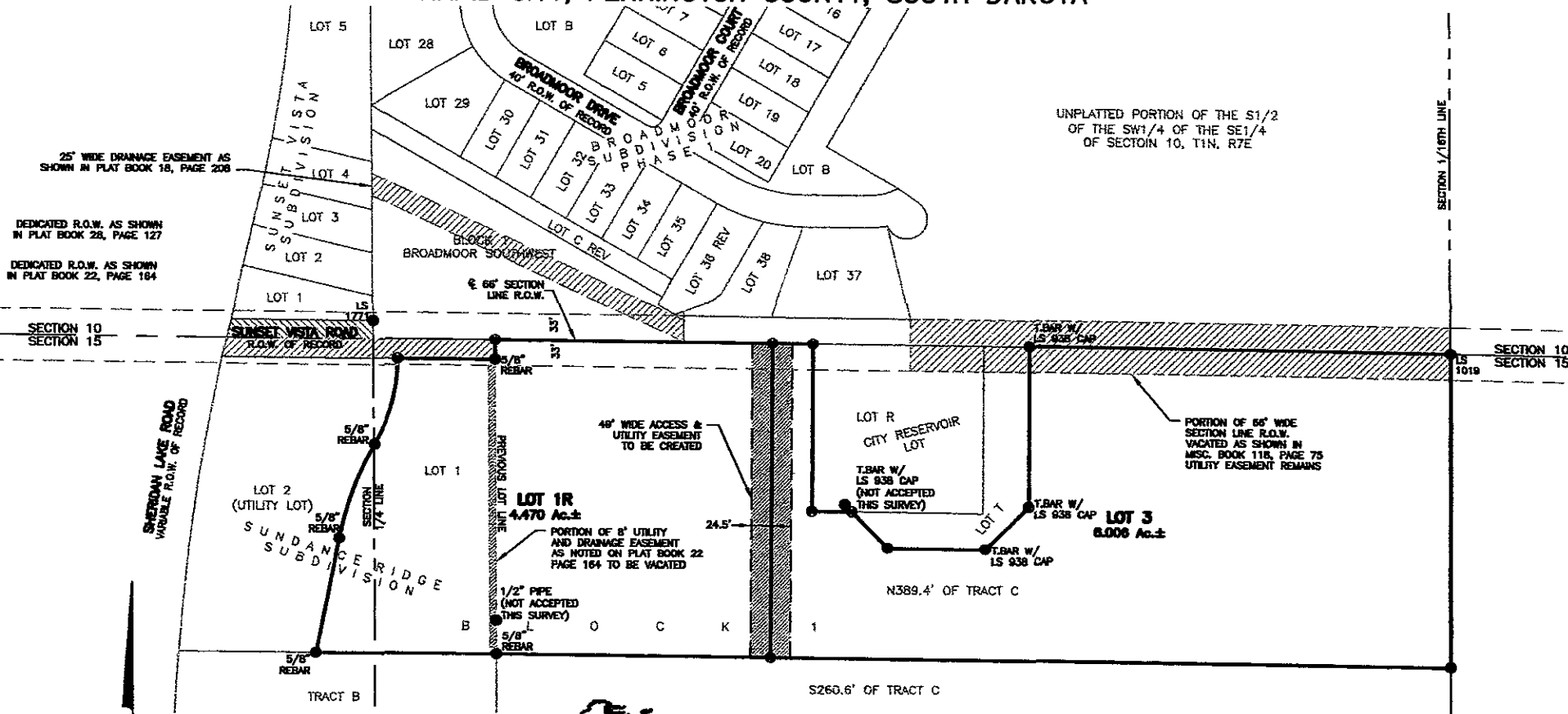
PLAT OF LOT 1R AND LOT 3 OF BLOCK 1, SUNDANCE RIDGE SUBDIVISION

(formerly Lot 1 of Block 1, Sundance Ridge Subdivision &
N389.4' of Tract C of the NW1/4 of the NE1/4)
LOCATED IN THE NW1/4 OF THE NE1/4
& THE NE1/4 OF THE NW1/4
SECTION 15, T1N, R7E, BHM
RAPID CITY, PENNINGTON COUNTY, SOUTH DAKOTA

RECEIVED

DEC 14 2007

Rapid City Growth
Management Department



UNPLATTED PORTION OF THE S1/2
OF THE SW1/4 OF THE SE1/4
OF SECTION 10, T1N, R7E

SECTION 14/16TH LINE

SECTION 10
SECTION 15

SHERIDAN LAKE ROAD
VARIABLE R.O.W. OF RECORD



CITY HALL 1903

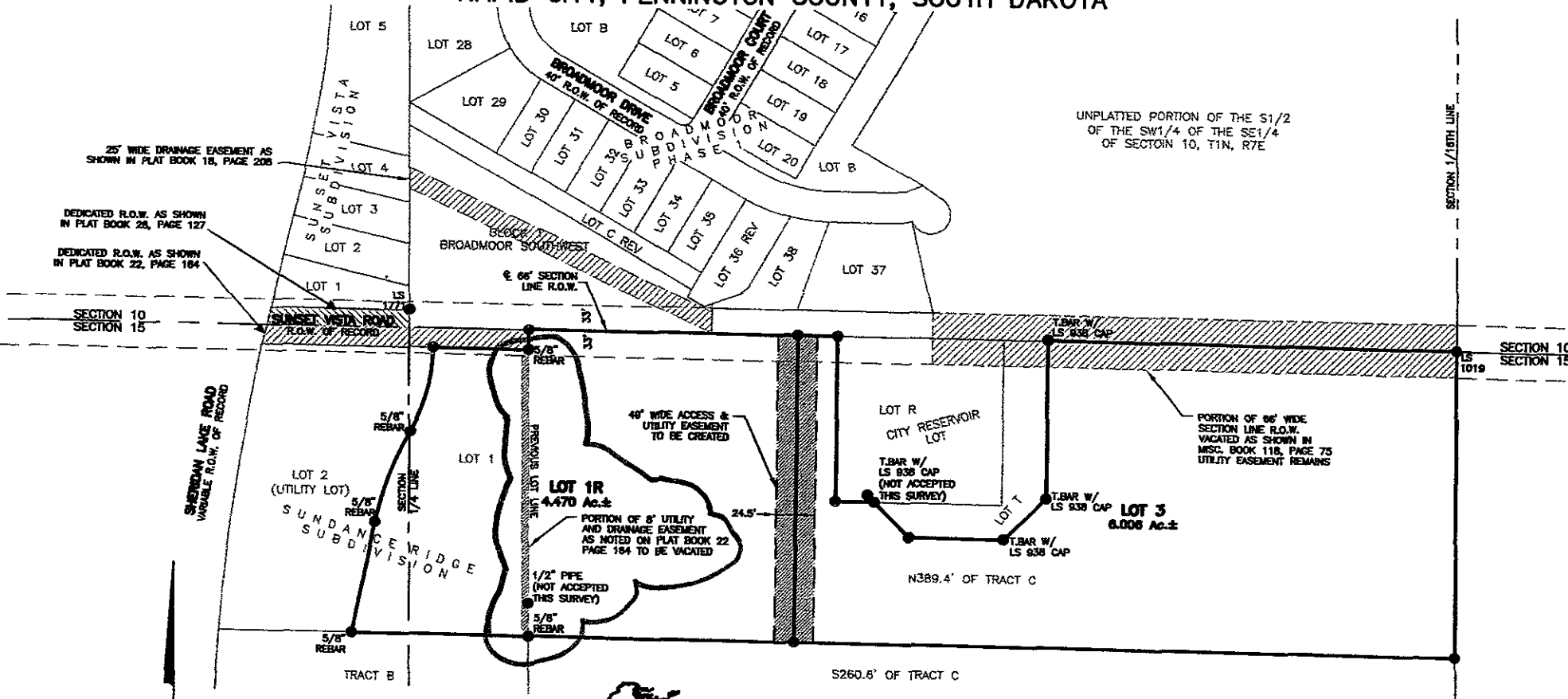
Renner & Associates, LLC.

DECEMBER 14, 2007
SCALE: NTS

616 Sixth St. * Rapid City, SD 57701 * 605/721-7310
FAX: 605/721-7313 * E-MAIL: Gary@RennerAssoc.com

PLAT OF LOT 1R AND LOT 3 OF SUNDANCE RIDGE SUBDIVISION

(formerly Lot 1 of Sundance Ridge Subdivision & N389.4' of Tract C of the NW1/4 of the NE1/4)
LOCATED IN THE NW1/4 OF THE NE1/4
& THE NE1/4 OF THE NW1/4
SECTION 15, T1N, R7E, BHM
RAPID CITY, PENNINGTON COUNTY, SOUTH DAKOTA



UNPLATTED PORTION OF THE S1/2
OF THE SW1/4 OF THE SE1/4
OF SECTION 10, T1N, R7E



CITY HALL 1903

Renner & Associates, LLC.

DECEMBER 10, 2007
SCALE: NTS

616 Sixth St. * Rapid City, SD 57701 * 605/721-7310
FAX: 605/721-7313 * E-MAIL: Gary@RennerAssoc.com