

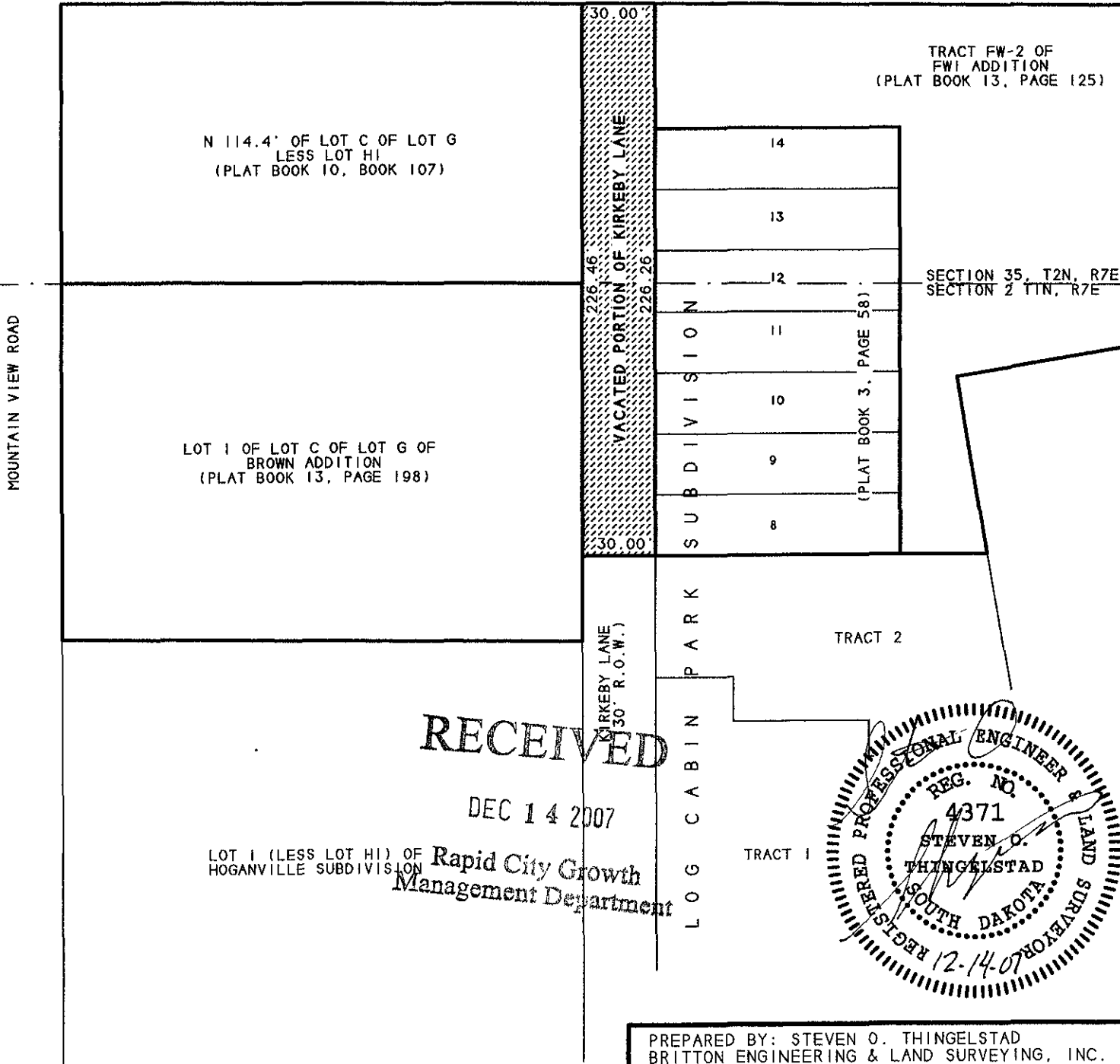
EXHIBIT "A"  
OF  
PARTIAL VACATION  
OF KIRKEBY LANE RIGHT-OF-WAY  
(30' FEET WIDE)

LOCATED IN GOV'T LOT 4 OF SECTION 2, T1N, R7E &  
IN THE SW 1/4 OF THE SW 1/4 OF SECTION 35, T2N, R7E, BHM  
RAPID CITY, PENNINGTON COUNTY, SOUTH DAKOTA



SCALE: 1" = 60'  
DECEMBER 14, 2007

CHICAGO & NORTHWESTERN  
RAILROAD RIGHT-OF-WAY  
(100' ROW)



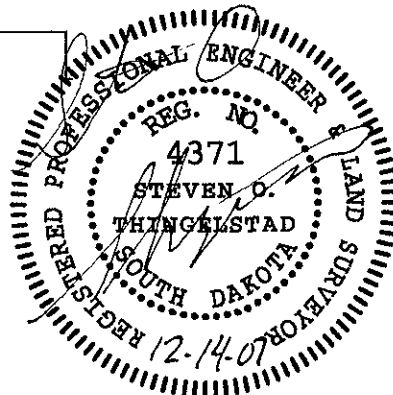
TRACT FW-2 OF  
FWI ADDITION  
(PLAT BOOK 13, PAGE 125)

SECTION 35, T2N, R7E  
SECTION 2 T1N, R7E

RECEIVED

DEC 14 2007

LOT 1 (LESS LOT H1) OF  
HOGANVILLE SUBDIVISION  
Rapid City Growth  
Management Department



PREPARED BY: STEVEN O. THINGELSTAD  
BRITTON ENGINEERING & LAND SURVEYING, INC.  
8035 BLACK HAWK ROAD, SUITE 5,  
BLACK HAWK, SOUTH DAKOTA 57718