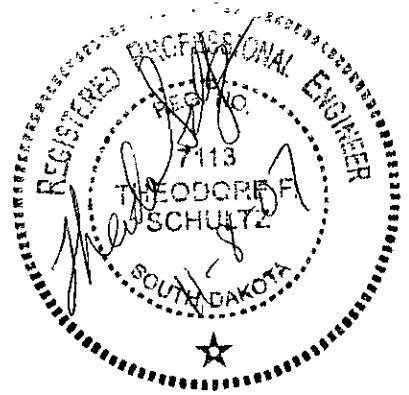
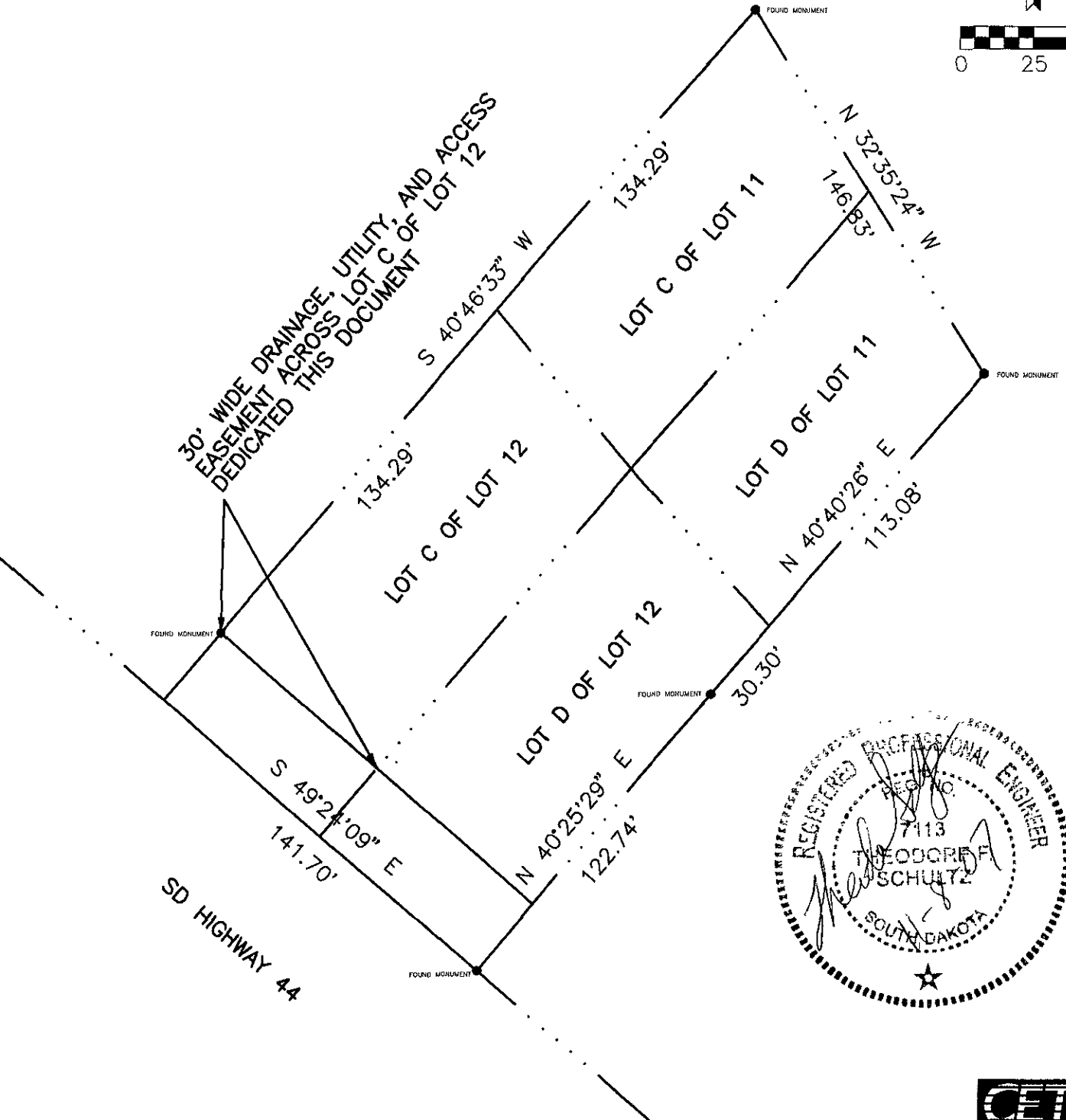
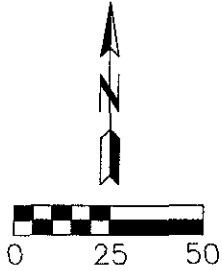


EASEMENT EXHIBIT A

DEDICATION OF 30' DRAINAGE, UTILITY AND ACCESS
EASEMENT ACROSS LOT C OF LOT 12
LOCATED IN THE SE1/4 OF NE1/4 SECTION 9, T.1N., R.8E.,
B.H.M., PENNINGTON COUNTY, SOUTH DAKOTA.



EASEMENT EXHIBIT A

DEDICATION OF 30' DRAINAGE, UTILITY AND SIGN
EASEMENT ACROSS LOT D OF LOT 12
LOCATED IN THE SE1/4 OF NE1/4 SECTION 9, T.1N., R.8E.,
B.H.M., PENNINGTON COUNTY, SOUTH DAKOTA.

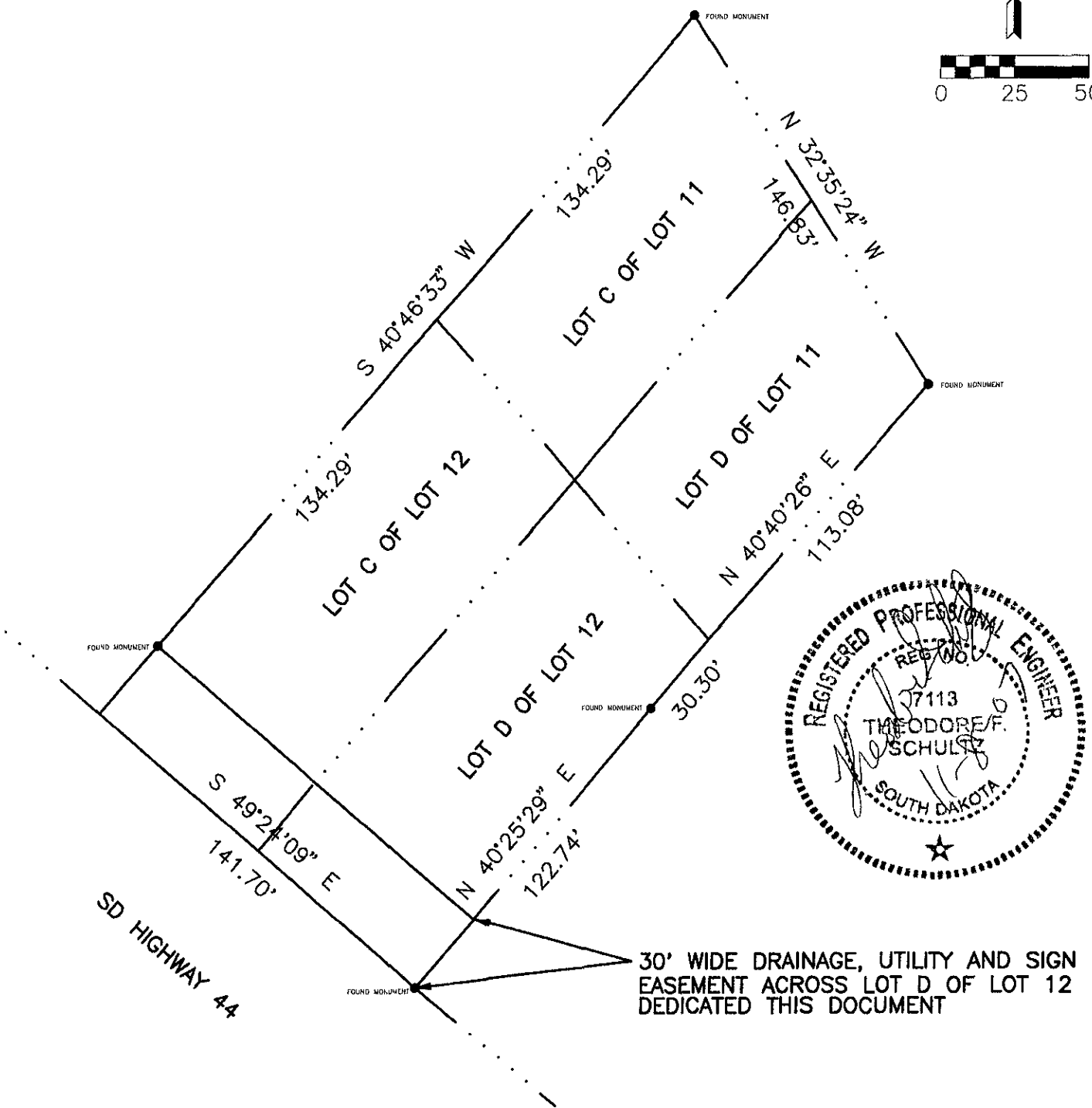
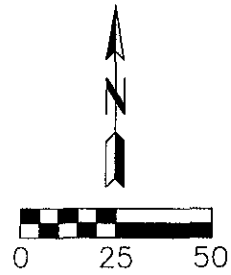
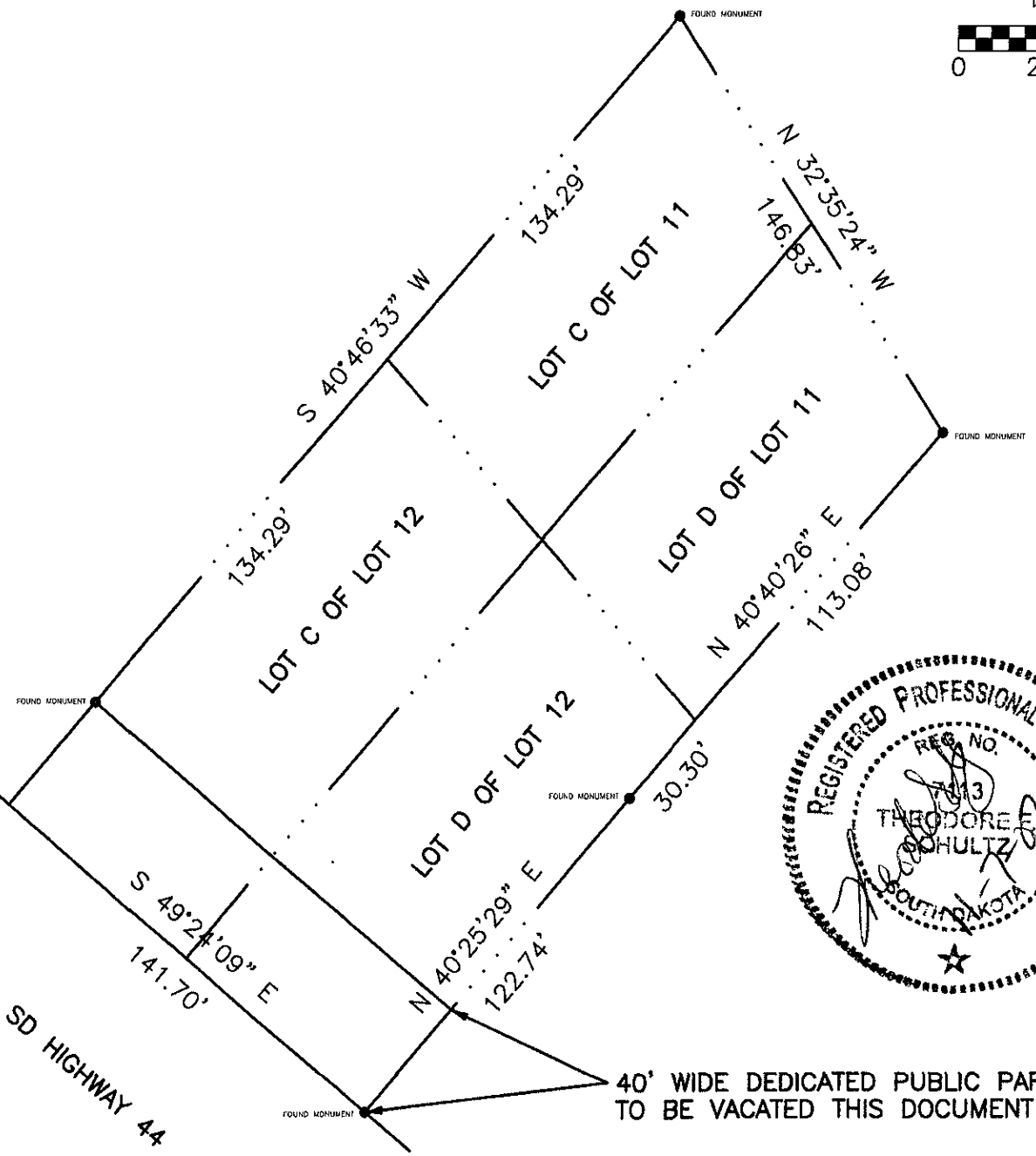
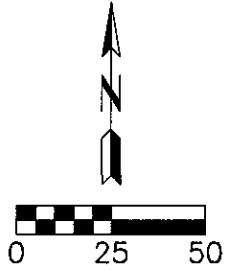


EXHIBIT A

VACATION OF A 40' PARKWAY DEDICATED TO THE PUBLIC ACROSS LOTS C&D OF LOT 12

LOCATED IN THE SE1/4 OF THE NE1/4 OF SECTION 9,
T.1N., R.8E., B.H.M., PENNINGTON COUNTY, SOUTH DAKOTA
AS RECORDED IN BOOK 8 OF PLAT ON PAGE 1
IN THE OFFICE OF THE REGISTER OF DEEDS.



40' WIDE DEDICATED PUBLIC PARKWAY
TO BE VACATED THIS DOCUMENT

