

PLAT OF  
 LOT A & LOT B OF LOT 4R OF HIGH SHERIDAN RANCH SUBDIVISION  
 (FORMERLY LOT 4R OF HIGH SHERIDAN RANCH SUBDIVISION)  
 LOCATED IN SECTION 35, T1N. R0E B.H.M.  
 PENNINGTON COUNTY, SOUTH DAKOTA



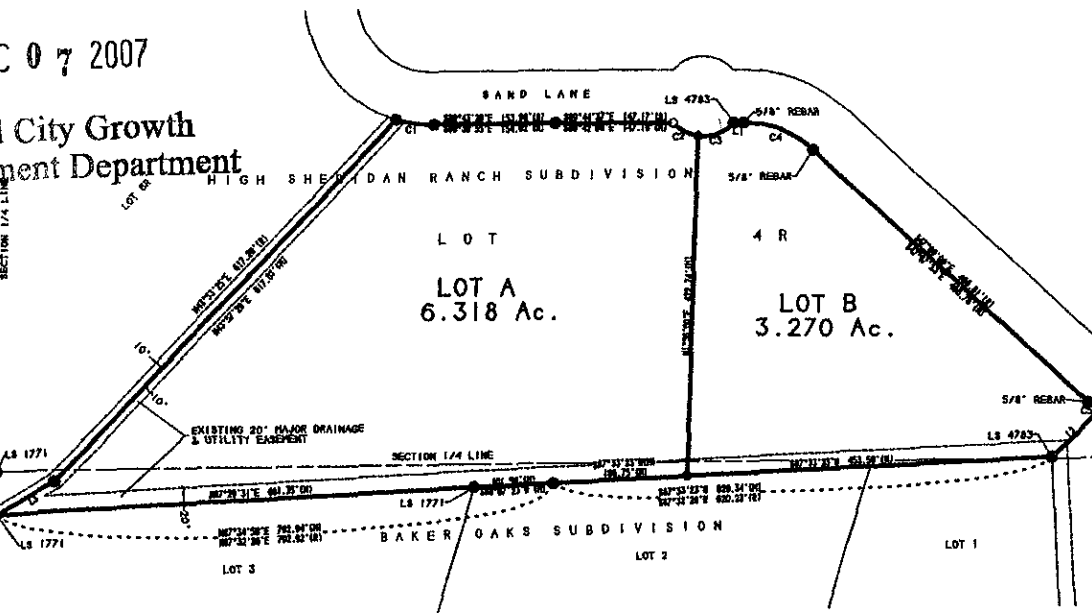
SCALE 1" = 100'  
 SEPTEMBER 13, 2007

RECEIVED

07 2007

City Growth  
 Department

SECTION 1/4 LINE



**LEGEND**

- INDICATES FOUND SURVEY MONUMENT, REBAR WITH CAP MARKED "POLYING LS 4200", UNLESS OTHERWISE NOTED.
- INDICATES 5/8" REBAR WITH SURVEY CAP MARKED "TRINELSTAD LS 4371", UNLESS OTHERWISE NOTED.
- INDICATES SET 5/8" REBAR WITH SURVEY CAP MARKED "TRINELSTAD LS 4371", FOR E.O.W., P.C.'S & P.T.'S
- (R) INDICATES MEASURED DIMENSION, THIS SURVEY.
- (R) INDICATES RECORDED DIMENSION PREVIOUSLY RECORDED ON PLAT OR DEED.

BASIS OF BEARINGS BY GEODETIC NORTH.

8' WIDE UTILITY AND MINOR DRAINAGE EASEMENTS ALONG EACH SIDE OF INTERIOR SIDE LOT LINE BETWEEN LOT A AND LOT B. ALL OTHER UTILITY AND MINOR DRAINAGE EASEMENTS CREATED IN PREVIOUS PLATTING REMAIN IN PLACE.

**CORNER TABLE (INCHES)**

MON.	BEARING	DIS.	BEARING	DISTANCE
C1	17°04'34"	42.13	102°51'12" W	57.46
C2	09°02'34"	84.77	49°11'12" W	74.68
CA	49°25'14"	65.36	5°00'36" E	65.74
CS	9°41'38"	18.53	100°00'18" E	18.50

**CORNER TABLE (FEET)**

MON.	BEARING	DIS.	BEARING	DISTANCE
C1	17°04'34"	49.73	9°20'43" E	48.61
C2	41°05'01"	30.89	31°10'30" E	30.59
CA	30°28'01"	48.76	46°11'18" W	48.77
C3	22°31'01"	18.44	129.48	18.42
CS	9°44'49"	18.41	110.27	18.42

**LINE TABLE (INCHES)**

MON.	BEARING	DISTANCE
L1	8°04'17" E	12.64
L3	43°34'16" W	65.36
L5	62°10'54" E	45.89

**LINE TABLE (FEET)**

MON.	BEARING	DISTANCE
L1	8°04'17" E	12.64
L3	43°34'16" W	65.36
L5	62°10'54" E	45.89

NOTE: AT THE TIME A BUILDING PERMIT APPLICATION IS SUBMITTED, A RESERVE DRAINFIELD AREA FOR ON-SITE WASTEWATER TREATMENT WILL BE IDENTIFIED AND HELD IN RESERVE UNLESS A PUBLIC SEWER SYSTEM IS PROVIDED.