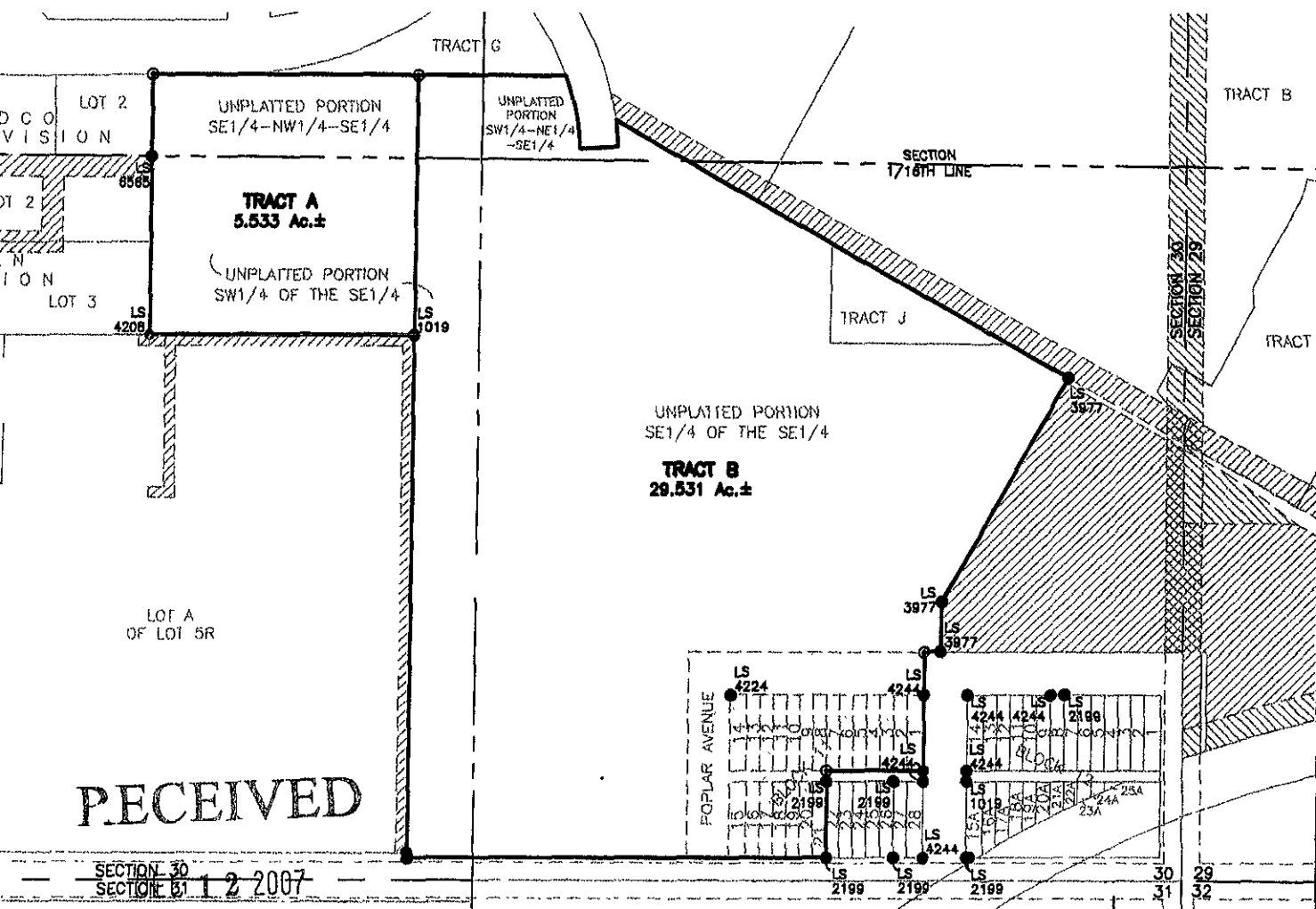


PLAT OF TRACTS A & B OF RUSHMORE CENTER

(formerly a portion of the SE1/4 of the NW1/4 of the SE1/4,
 a portion of the SW1/4 of the NE1/4 of the SE1/4,
 a portion of the SW1/4 of the SE1/4, and a portion of the SE1/4 of the SE1/4
 All in Section 30, T2N, R8E, BHM;
 Vacated Lots 1-21, and vacated portion of alley of Block 11,
 Vacated portion of Sunnyside Avenue, and Poplar Avenue.
 All in Plainview 2nd Addition to Rapid City, SD;
 and Tract J of Rushmore Crossing)
 LOCATED IN THE SE1/4 OF SECTION 30, T2N, R8E, BHM
 RAPID CITY, PENNINGTON COUNTY, SOUTH DAKOTA



RECEIVED

Rapid City Growth
Management Department



CITY HALL 1903

Renner & Associates, LLC.

616 Sixth St. * Rapid City, SD 57701 * 605/721-7310
 FAX: 605/721-7313 * E-MAIL: Gary@RennerAssoc.com

DECEMBER 11, 2007
 SCALE: NTS