

VED

PLAT OF

LOT A & LOT B OF LOT 4R OF HIGH SHERIDAN RANCH SUBDIVISION
(FORMERLY LOT 4R OF HIGH SHERIDAN RANCH SUBDIVISION)
LOCATED IN SECTION 35, T1N. R6E B.H.M.
PENNINGTON COUNTY, SOUTH DAKOTA

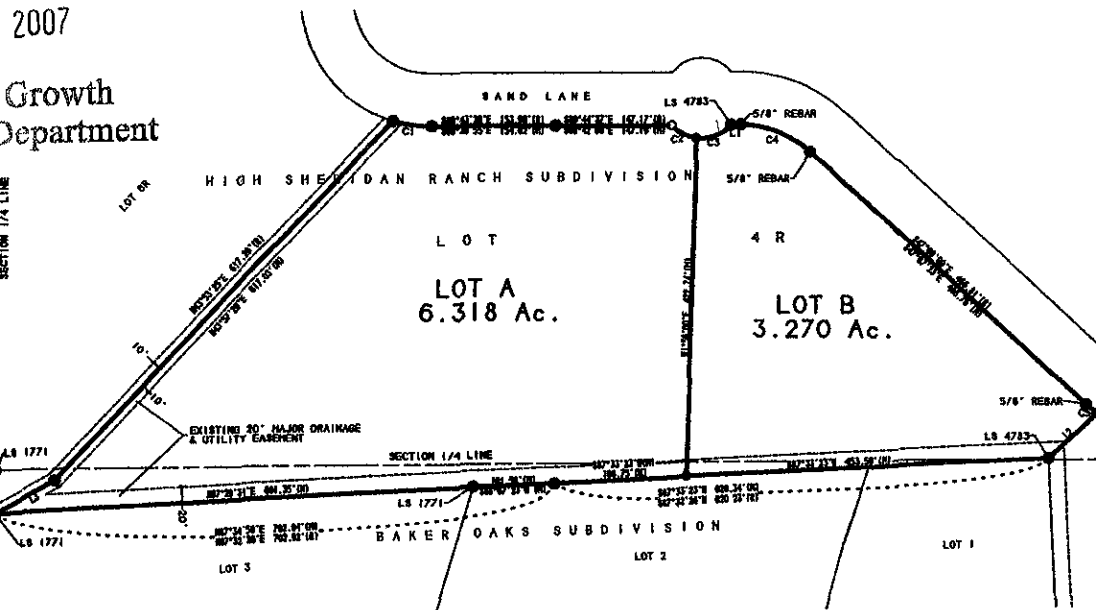


SCALE: 1" = 100'
SEPTEMBER 13, 2007

2007

Growth
Department

SECTION 1/4 LINE

**LEGEND**

- INDICATES FOUND SURVEY MONUMENT. REBAR WITH CAP MARKED "POLICE L& 42544". UNLESS OTHERWISE NOTED.
- INDICATES SET 5/8" REBAR WITH SURVEY CAP MARKED "THINDELSTAD L& 4371". UNLESS OTHERWISE NOTED.
- INDICATES SET 5/8" REBAR WITH SURVEY CAP MARKED "THINDELSTAD L& 4371". FOR R.O.T., P.C.'S & P.T.'S
- (H) INDICATES MEASURED DIMENSION, THIS SURVEY.
- (R) INDICATES RECORD DIMENSION PREVIOUSLY RECORDED ON PLAT OR DEED.

BASIS OF BEARINGS BY GEODETIC NORTH.

8" WIDE UTILITY AND MINOR DRAINAGE EASEMENTS ALONG EACH SIDE OF INTERSECTION WITH LOT LINE BETWEEN LOT A AND LOT B. ALL OTHER UTILITY AND MINOR DRAINAGE EASEMENTS CREATED IN PREVIOUS PLATTING REMAIN IN PLACE.

ANY MAJOR DRAINAGE EASEMENT SHOWN HEREON SHALL BE KEPT FREE OF ALL OBSTRUCTIONS INCLUDING BUT NOT LIMITED TO BUILDINGS, WALLS, FENCES, TREES AND SHRUBS. THESE EASEMENTS GRANT TO ALL PUBLIC AUTHORITIES THE RIGHT TO CONSTRUCT, OPERATE, MAINTAIN, INSPECT AND REPAIR SUCH IMPROVEMENTS AND STRUCTURES AS IT DEEM EXPEDIENT TO FACILITATE DRAINAGE FROM ANY SOURCE.

CORNER TABLE (RECORD)

LINE	BEARING	DI	DI	DI	DI	DI	DI	DI	DI	DI	DI	DI	DI	DI	DI	DI	DI	DI	DI	
C1	17°08'28"	48.15	142.25	3°02'28" E	42.85															
C2	07°48'28"	48.77	46.77	3°02'28" E	74.88															
C3	07°55'09"	52.88	179.81	3°02'28" E	83.70															
C4	8°41'56"	16.52	186.88	3°52'48" E	18.28															

CORNER TABLE (RECORDED)

LINE	BEARING	DI	DI	DI	DI	DI	DI	DI	DI	DI	DI	DI	DI	DI	DI	DI	DI	DI	DI	
C1	15°26'40"	66.71	193.30	3°02'28" E	48.64															
C2	44°36'08"	36.88	49.71	3°02'28" E	36.59															
C3	38°08'04"	46.79	46.71	3°02'28" E	46.79															
C4	42°21'08"	66.88	186.82	3°02'28" E	54.52															
C5	8°42'48"	11.41	118.52	3°52'48" E	16.40															

LINE TABLE (RECORD)

LINE	BEARING	DISTANCE
L1	3°02'28" E	12.44'
L2	4°28'18" W	63.28'
L3	8°18'54" E	85.88'

LINE TABLE (RECORDED)

LINE	BEARING	DISTANCE
L1	3°02'28" E	12.44'
L2	4°28'18" W	63.28'
L3	8°18'54" E	85.88'

NOTE: AT THE TIME A BUILDING PERMIT APPLICATION IS SUBMITTED, A RESERVE DRAINFIELD AREA FOR ON-SITE WASTEWATER TREATMENT SHALL BE IDENTIFIED AND HELD IN RESERVE UNLESS A PUBLIC SEWER SYSTEM IS PROVIDED.