

Dakota Canyon Market Place
Rapid City, South Dakota

Planning Commission Members
City Council Men and Women;

Attached are documents to assist in understanding the components of the Dakota Canyon Marketplace tax increment district.

These documents along with the project plan provided by the city staff will hopefully better inform you on the project, stimulate questions or comments, and add greater clarity to the project scope.

Of particular interest is the Wal-Mart site line development photo's and map. These photos were taken from the area in Enchanted Hills where 6 or 7 homes are directly impacted visually. I believe these are the only home owners which will be able to see the actual development in any close proximity. The photos depict the Wal-Mart store at the grade elevation it is to be constructed. This shows the store with the roof at approximately the elevation of Highway 16.

If you have questions r comments or would like more information please feel free to call.

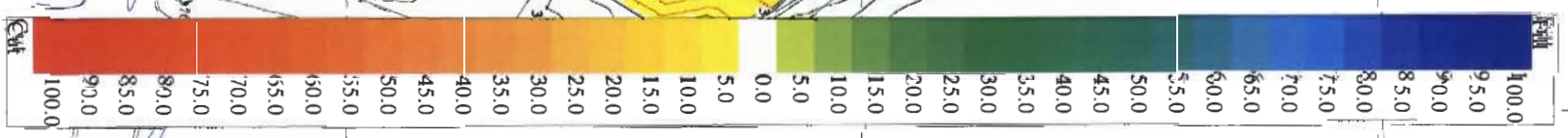
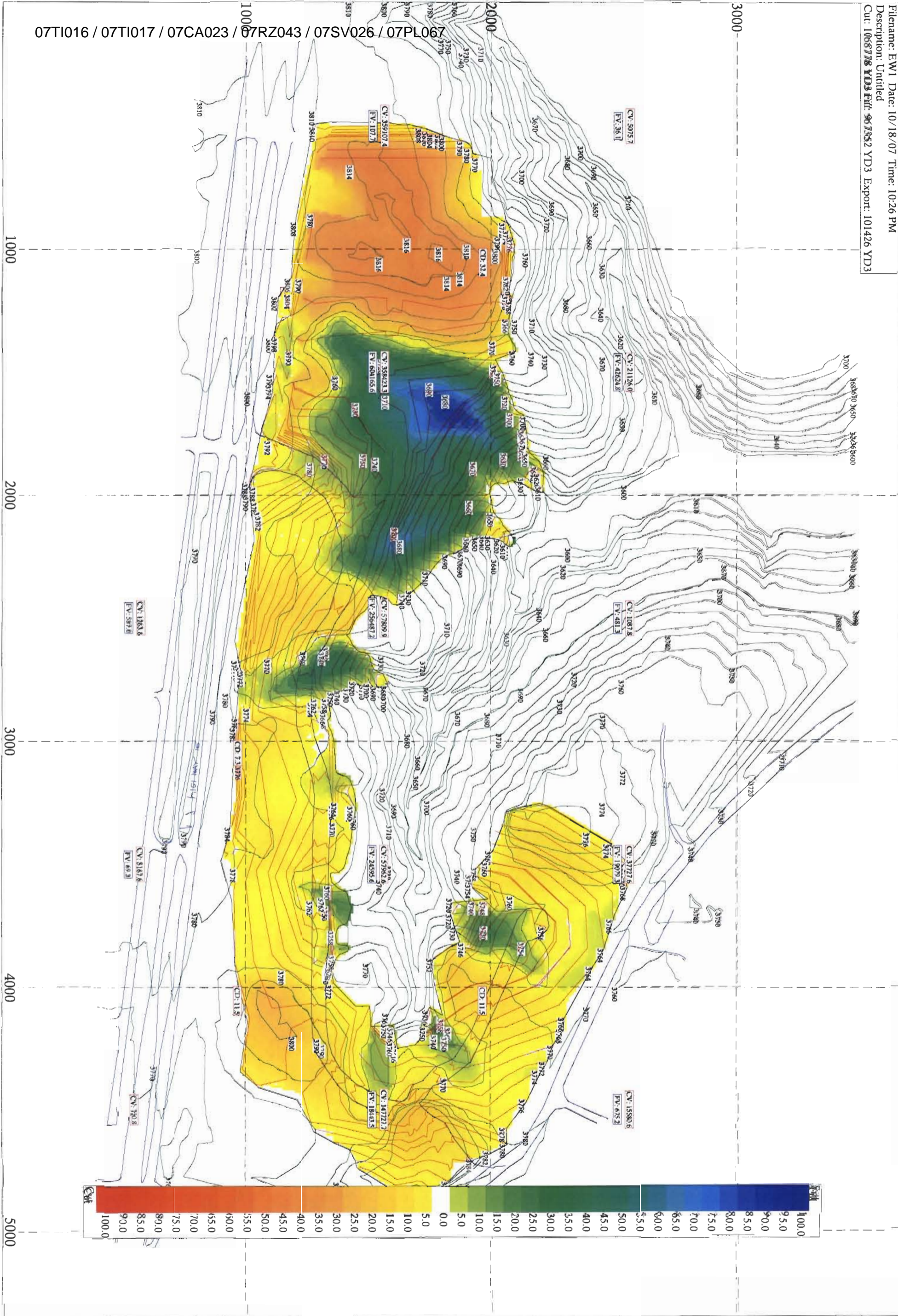
Cordially,

James Scull Jr.
Project Manager

**Dakota Canyon Market Place
T I D Discussion
October 22, 2007**

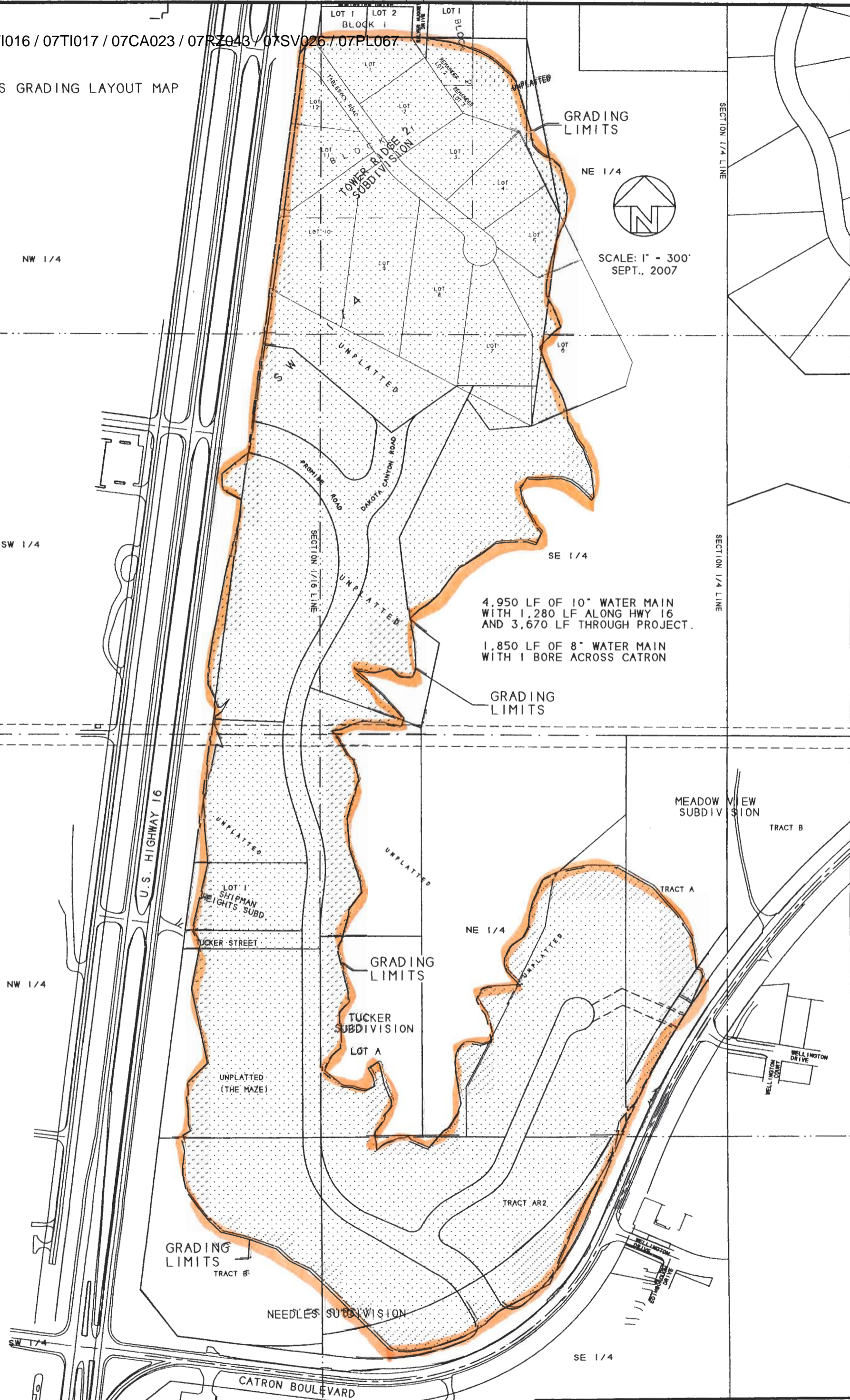
Exhibits as follows:

- Grading Maps Cut and Fill Color Rendering and Grading Location
- Water Line Map with Sizes
- Sewer District Map
- Project Sewer Line Map with Depths of the Sewers
- Catron Sewer Map
- Park Map
- Wal-Mart Site Line Development Photo and Map



07TI016 / 07TI017 / 07CA023 / 07RZ043 / 07SV026 / 07PL067

MASS GRADING LAYOUT MAP



4,950 LF OF 10" WATER MAIN WITH 1,280 LF ALONG HWY 16 AND 3,670 LF THROUGH PROJECT.

1,850 LF OF 8" WATER MAIN WITH 1 BORE ACROSS CATRON

WATER LAYOUT MAP

NW 1/4

SW 1/4

NW 1/4

SW 1/4

NE 1/4

SE 1/4

NE 1/4

SE 1/4



SCALE: 1" = 300'
SEPT., 2007

CONNECT TO EXISTING 10" WATER LINE

TOWER RIDGE SUBDIVISION 2

12" WATER MAIN (TYP.)

8" WATER MAIN

4,950 LF OF 10" WATER MAIN WITH 1,280 LF ALONG HWY 16 AND 3,670 LF THROUGH PROJECT.
1,850 LF OF 8" WATER MAIN WITH 1 BORE ACROSS CATRON

EXISTING 14" WATER MAIN

U.S. HIGHWAY 16

LOT 1 SHIPMAN HEIGHTS SUBD.

TUCKER STREET

TUCKER SUBDIVISION LOT A

UNPLATTED (THE MAZE)

12" WATER MAIN (TYP.)

8" WATER MAIN (TYP.)

MEADOW VIEW SUBDIVISION

TRACT A

TRACT B

BORE ACROSS CATRON BLVD. CONNECT TO EXISTING 6" WATER LINE

8" WATER MAIN (TYP.)

TRACT AR2

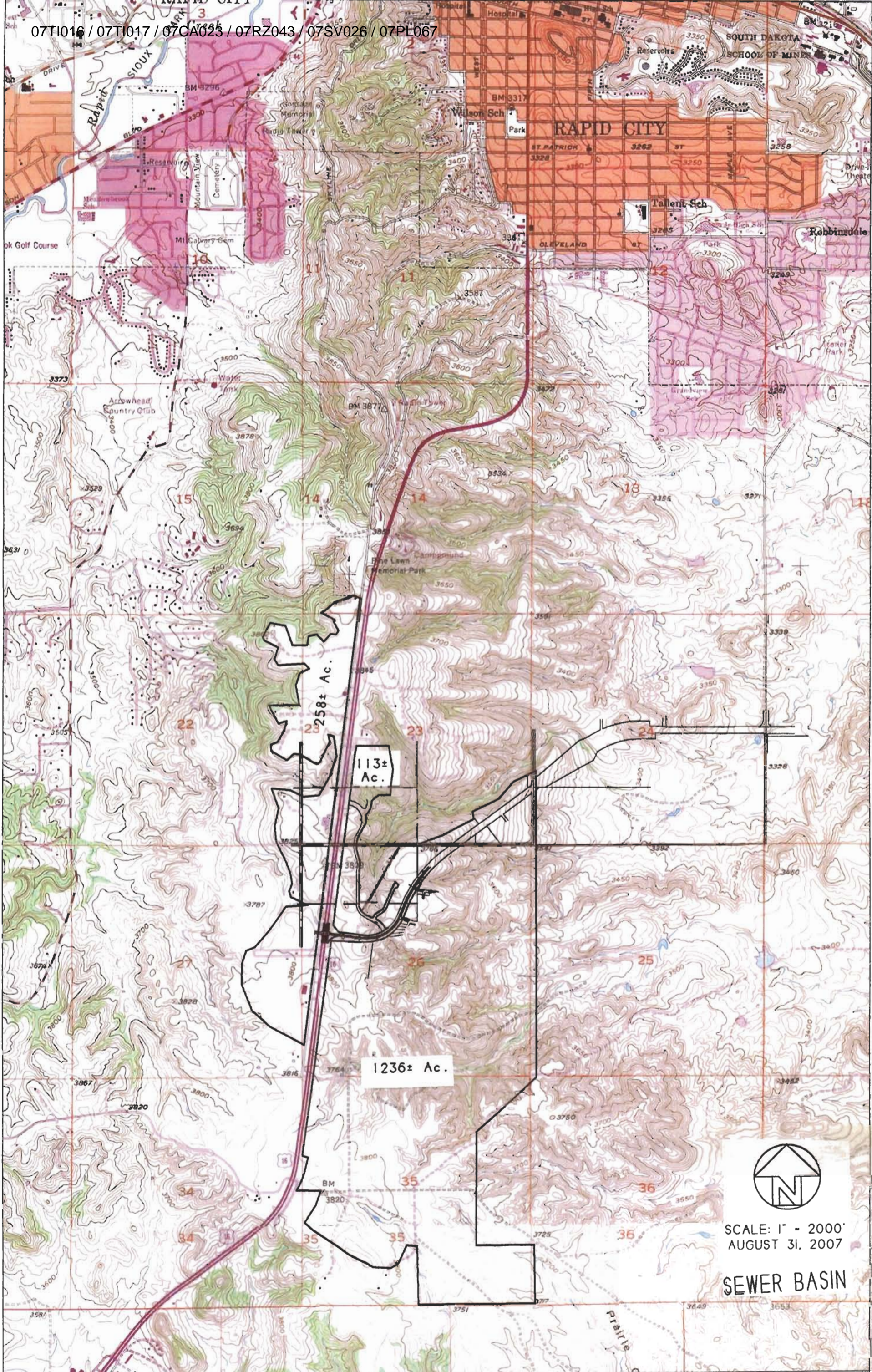
12" WATER MAIN (TYP.)

TRACT B

NEEDLES SUBDIVISION

CATRON BOULEVARD

07T1016 / 07T1017 / 07CA023 / 07RZ043 / 07SV026 / 07PL067



SCALE: 1" = 2000'
AUGUST 31, 2007

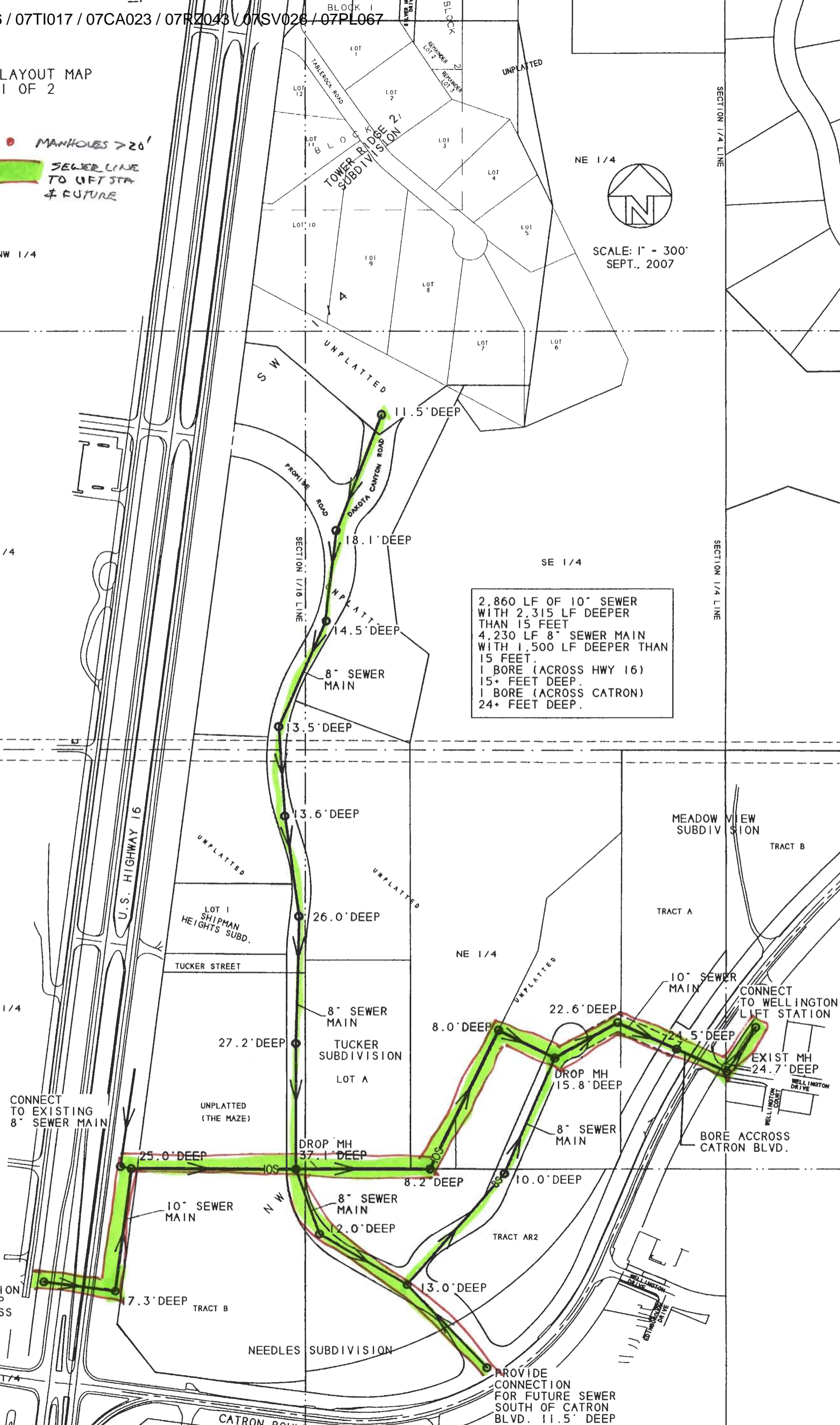
SEWER BASIN

SEWER LAYOUT MAP
SHEET 1 OF 2

● MANHOLES > 20'
SEWER LINE TO LIFT STA & FUTURE

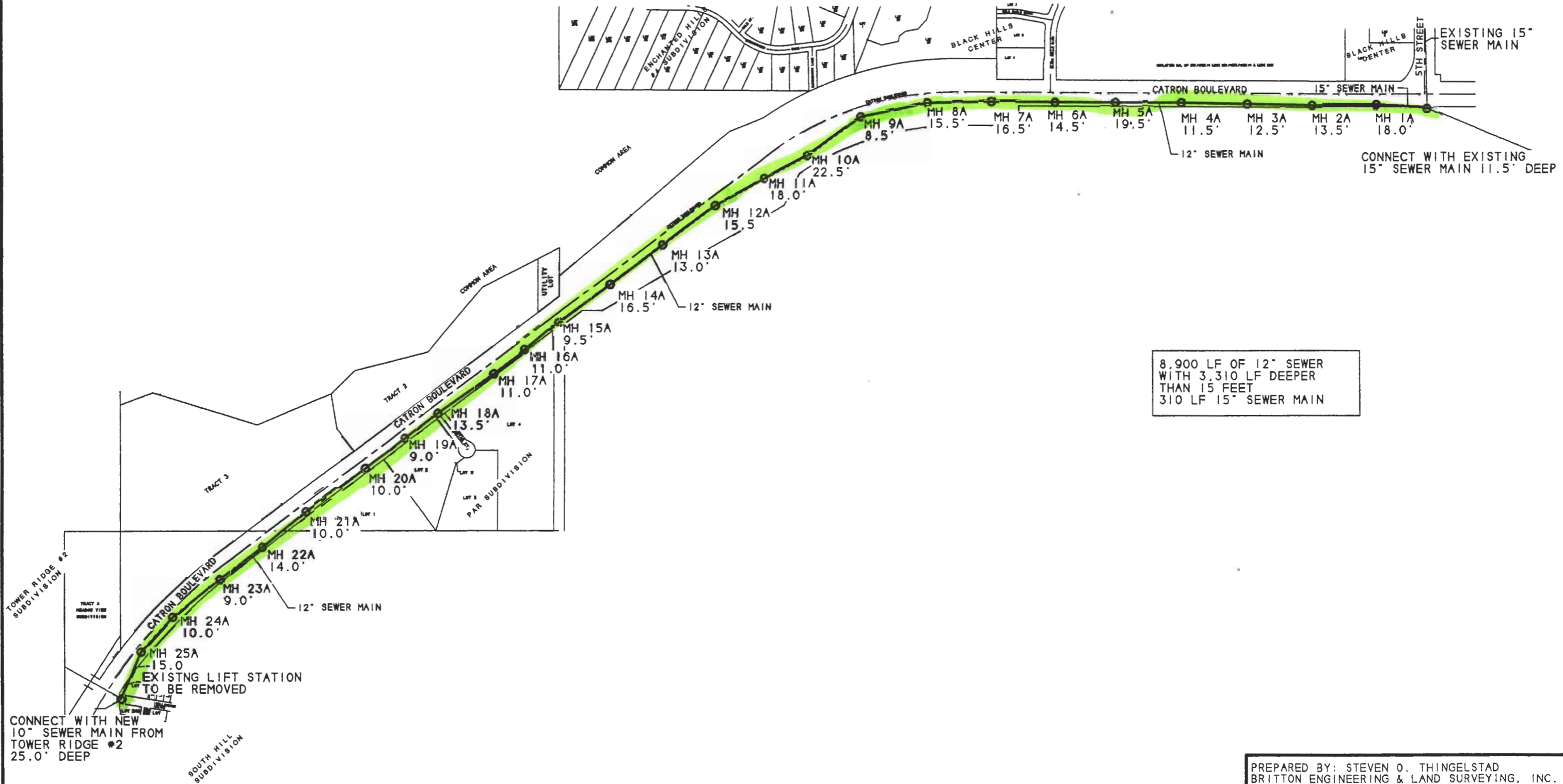
SCALE: 1" = 300'
SEPT., 2007

2,860 LF OF 10" SEWER WITH 2,315 LF DEEPER THAN 15 FEET
4,230 LF 8" SEWER MAIN WITH 1,500 LF DEEPER THAN 15 FEET.
1 BORE (ACROSS HWY 16) 15+ FEET DEEP.
1 BORE (ACROSS CATRON) 24+ FEET DEEP.



CONNECT TO HWY 16 LIFT STATION 14.6' DEEP BORE ACROSS HWY 16

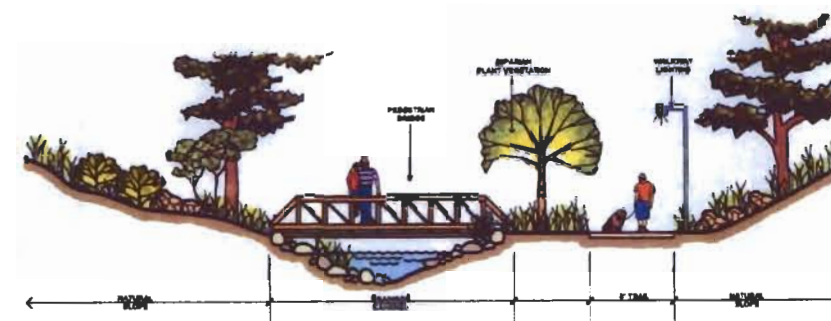
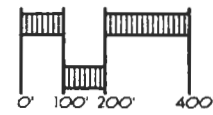
PROVIDE CONNECTION FOR FUTURE SEWER SOUTH OF CATRON BLVD. 11.5' DEEP



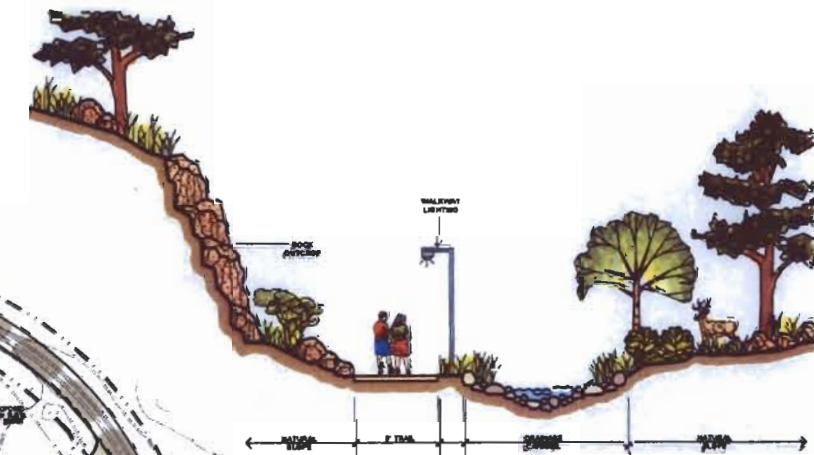
Dakota Canyon Nature Preserve

Rapid City, South Dakota

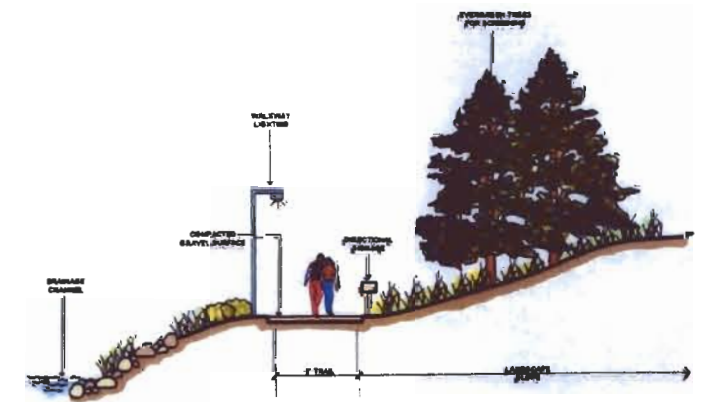
PROJECT NO.: R01-299
 FILE NAME: clu299-SD2
 DATE: SEPT. 5, 2001



NATURE TRAIL - A
 SCALE: 1/8"=1'-0"



NATURE TRAIL - C
 SCALE: 1/8"=1'-0"



NATURE TRAIL - B
 SCALE: 1/8"=1'-0"