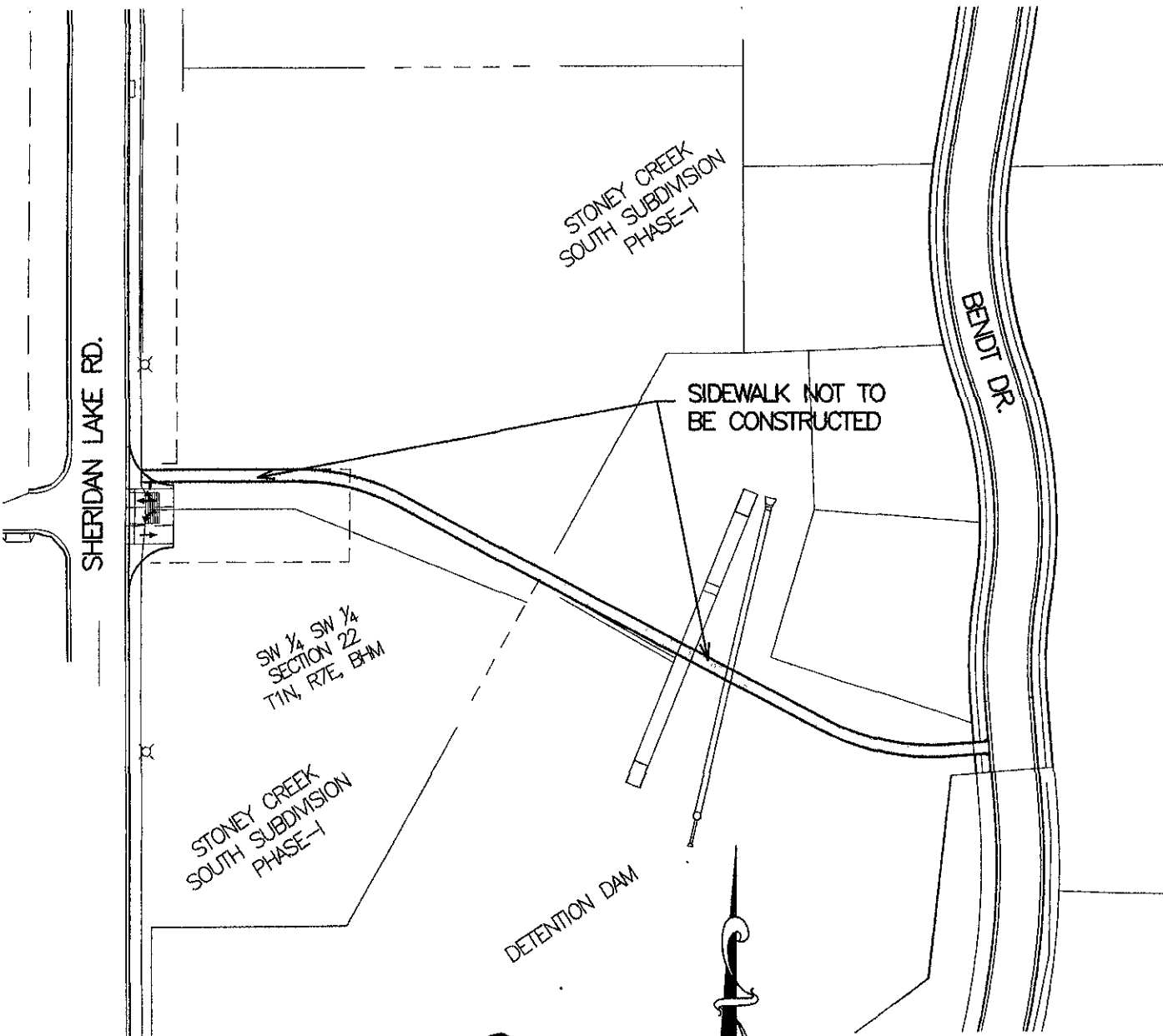


# EXHIBIT A

VARIANCE TO NOT CONSTRUCT SIDEWALK FOR  
STONEY CREEK SOUTH SUBDIVISION PHASE-I  
LOCATED IN THE SW<sup>1</sup>/<sub>4</sub>, SW<sup>1</sup>/<sub>4</sub> SECTION 22,  
T1N, R7E, BHM  
RAPID CITY, PENNINGTON COUNTY, SOUTH DAKOTA



**RECEIVED**

NOV 09 2007

Rapid City Growth  
Management Department



SCALE: 1" = 100'