

07PL152

PLAT OF

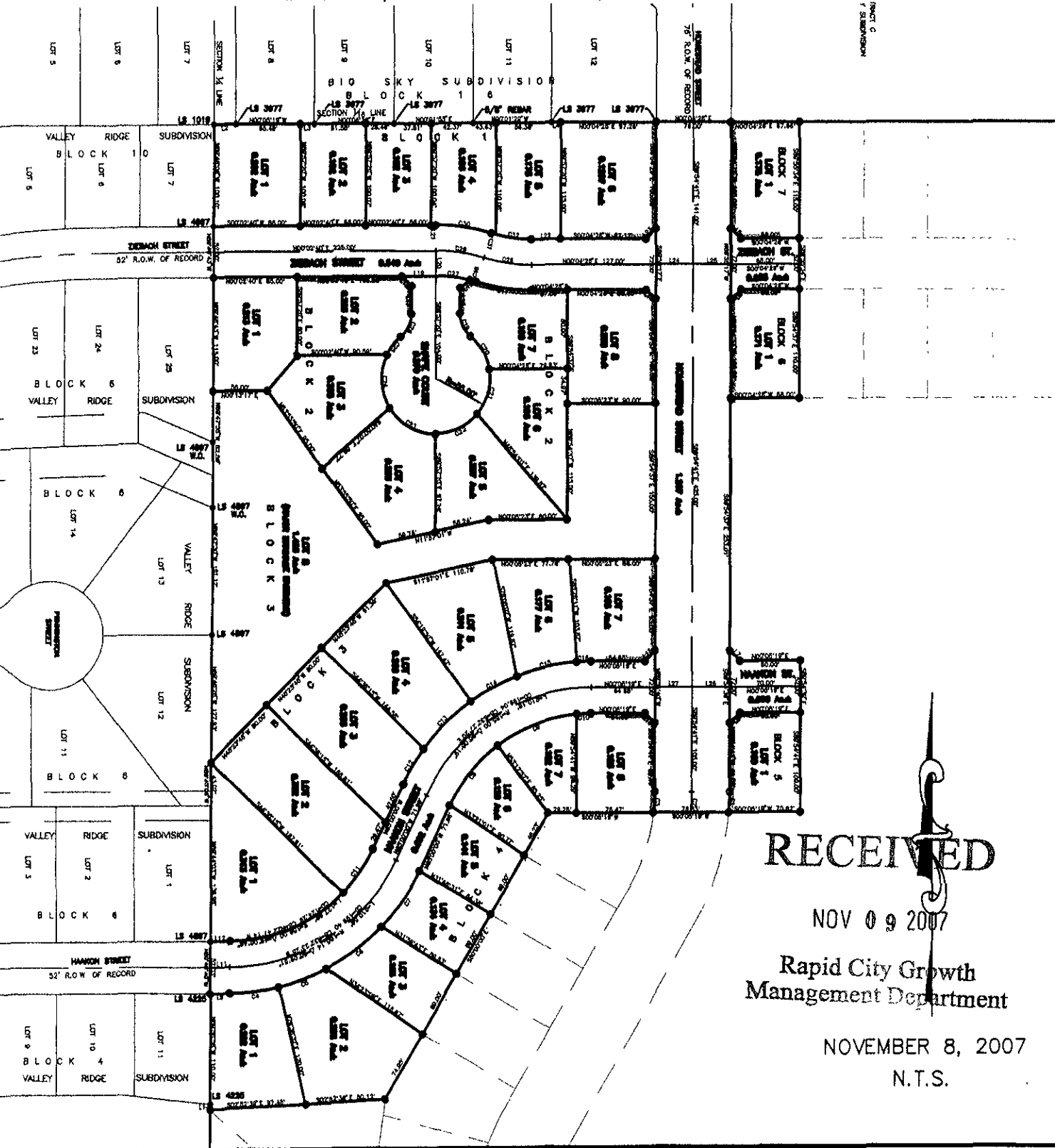
# LOTS 1 THROUGH 6 OF BLOCK 1, LOTS 1 THROUGH 8 OF BLOCK 2, LOTS 1 THROUGH 8 OF BLOCK 3, LOTS 1 THROUGH 8 OF BLOCK 4, LOT 1 OF BLOCK 5, LOT 1 OF BLOCK 6, AND LOT 1 OF BLOCK 7, HOMESTEAD SUBDIVISION

(formerly a portion of the SE1/4 of the NE1/4 of Section 3)

LOCATED IN THE SE1/4 OF THE NE1/4

SECTION 3, T1N, R8E, B.H.M.,

RAPID CITY, PENNINGTON COUNTY, SOUTH DAKOTA



# RECEIVED

NOV 09 2007

Rapid City Growth  
Management Department

NOVEMBER 8, 2007

N.T.S.