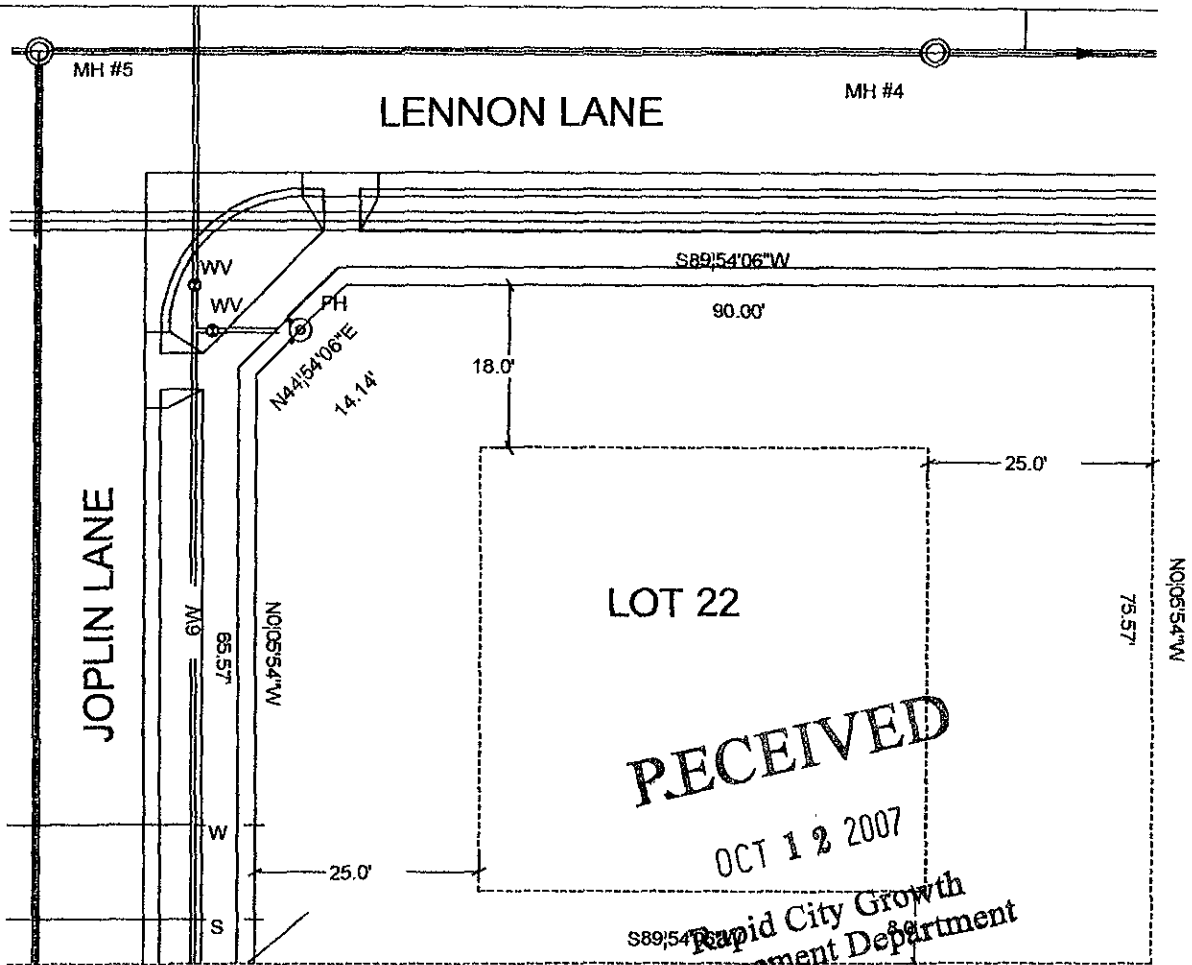


EXHIBIT
OF
LOT 22

ROCKINON RANCH ESTATES
IN THE N 1/2 NE 1/4 SE 1/4 SECTION 23
ALL LOCATED IN T2N, R7E, BHM
RAPID CITY PENNINGTON COUNTY, SOUTH DAKOTA



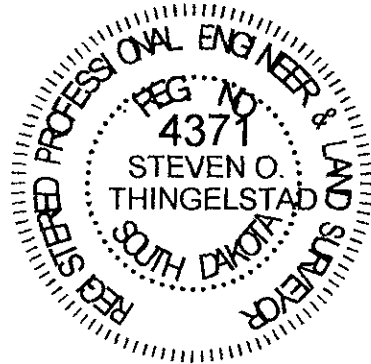
SCALE: 1" = 20'
SEPTEMBER 18, 2007



RECEIVED

OCT 12 2007

Rapid City Growth
Management Department

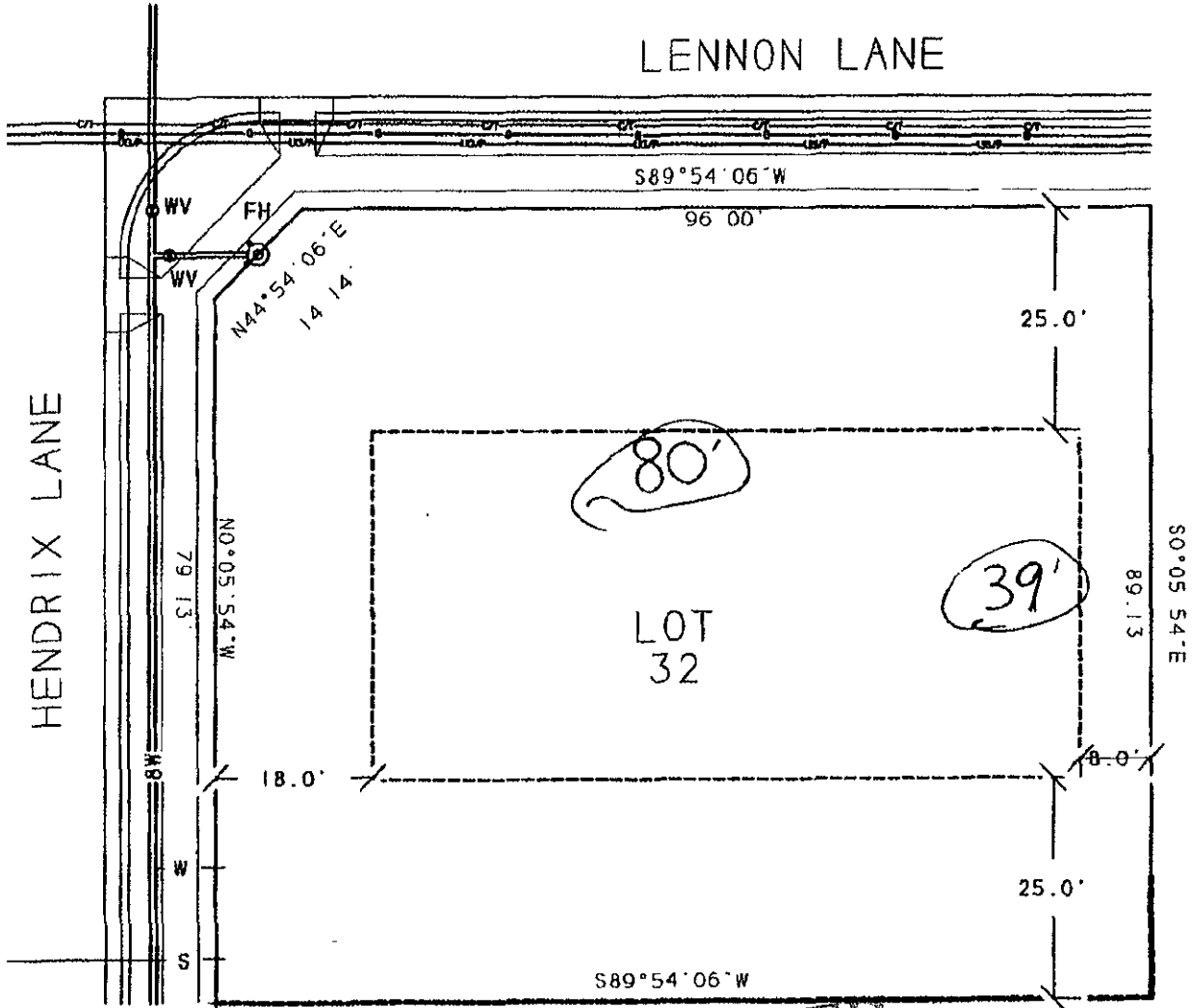


PREPARED BY: STEVEN O. THINGELSTAD
BRITTON ENGINEERING & LAND SURVEYING, INC.
8035 BLACK HAWK ROAD, SUITE 5,
BLACK HAWK, SOUTH DAKOTA 57718
TELEPHONE: (605) 716-7988

EXHIBIT
OF
LOT 32
ROCKINON RANCH ESTATES
IN THE N 1/2 NE 1/4 SE 1/4 SECTION 23
ALL LOCATED IN T2N. R7E. BHM
RAPID CITY PENNINGTON COUNTY, SOUTH DAKOTA



SCALE: 1" = 20'
SEPTEMBER 18, 2007



HENDRIX LANE

LENNON LANE

LOT
32

RECEIVED

OCT 12 2007

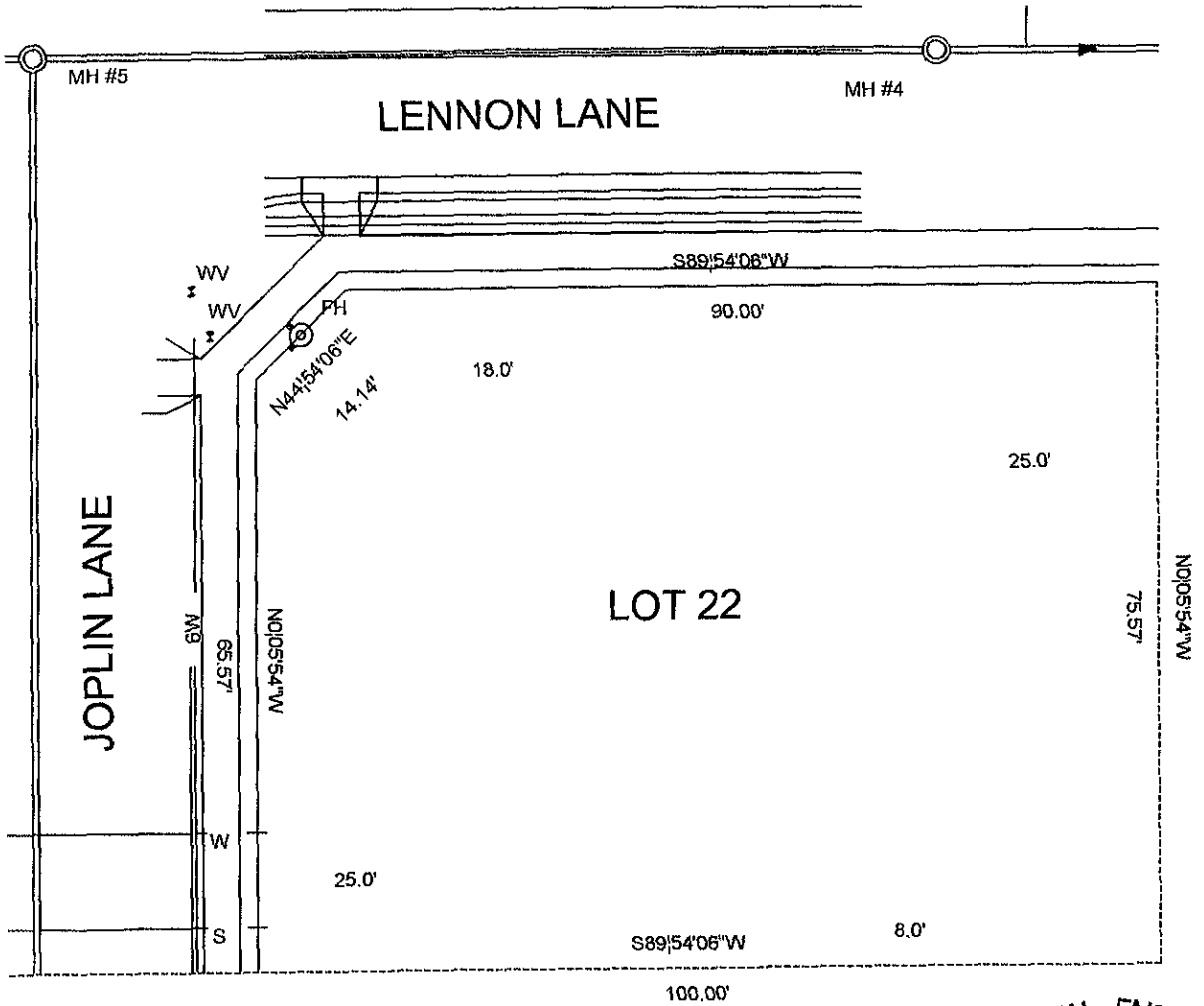
Rapid City Growth
Management Department



PREPARED BY: STEVEN O. THINGELSTAD
BRITTON ENGINEERING & LAND SURVEYING, INC.
8035 BLACK HAWK ROAD, SUITE 5,
BLACK HAWK, SOUTH DAKOTA 57718
TELEPHONE: (605) 716-7988

EXHIBIT
OF
LOT 22
ROCKINON RANCH ESTATES
IN THE N 1/2 NE 1/4 SE 1/4 SECTION 23
ALL LOCATED IN T2N, R7E, BHM
RAPID CITY PENNINGTON COUNTY, SOUTH DAKOTA

SCALE: 1" = 20'
SEPTEMBER 18, 2007



RECEIVED
 OCT 12 2007
 Rapid City Growth
 Management Department

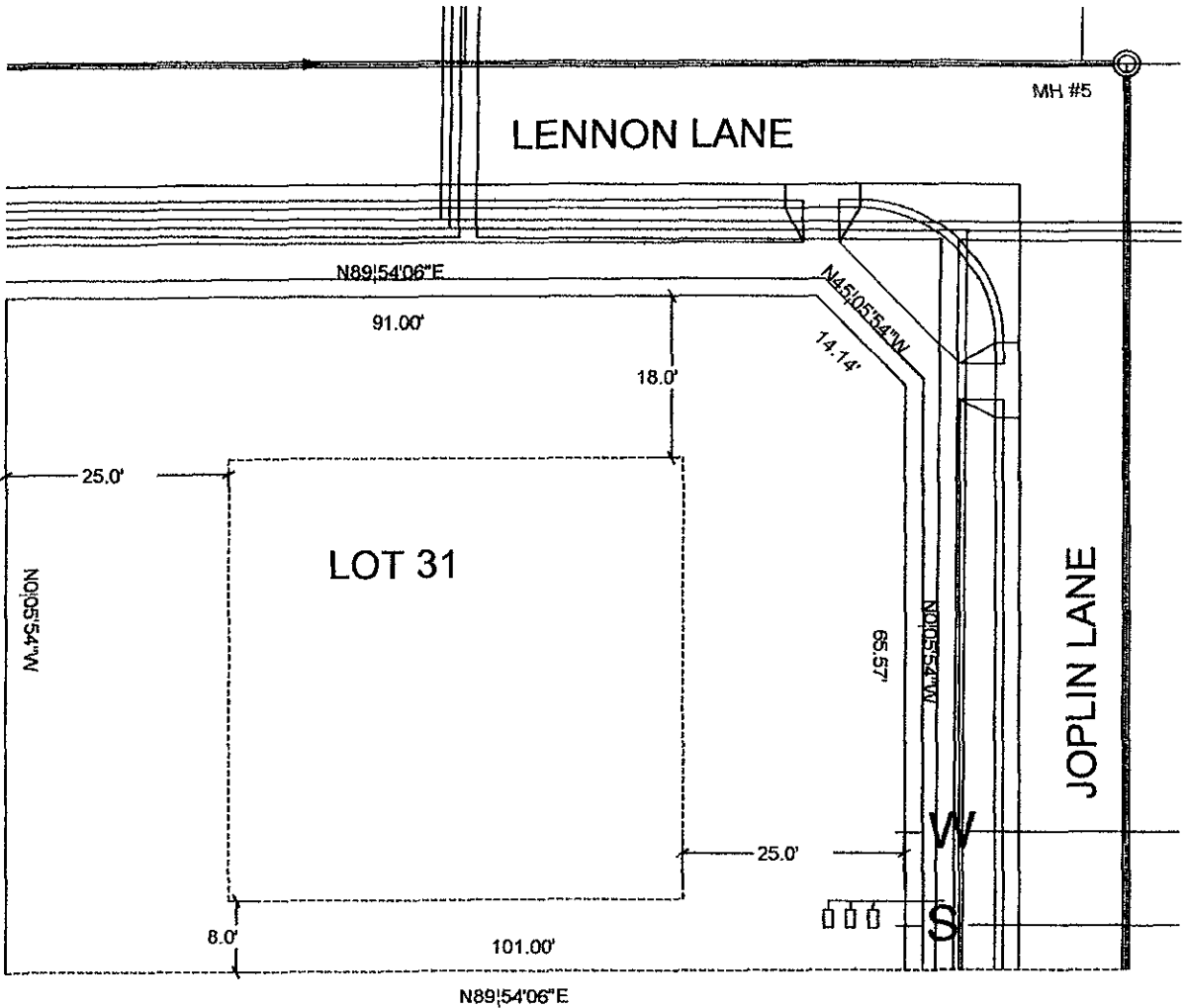
REGISTERED PROFESSIONAL ENGINEER & LAND SURVEYOR
 REG NO 4371
 STEVEN O. THINGELSTAD
 SOUTH DAKOTA

PREPARED BY: STEVEN O. THINGELSTAD
 BRITTON ENGINEERING & LAND SURVEYING, INC.
 8035 BLACK HAWK ROAD, SUITE 5,
 BLACK HAWK, SOUTH DAKOTA 57718
 TELEPHONE: (605) 716-7988

EXHIBIT
 OF
 LOT 31
 ROCKINON RANCH ESTATES
 IN THE N 1/2 NE 1/4 SE 1/4 SECTION 23
 ALL LOCATED IN T2N, R7E, BHM
 RAPID CITY PENNINGTON COUNTY, SOUTH DAKOTA



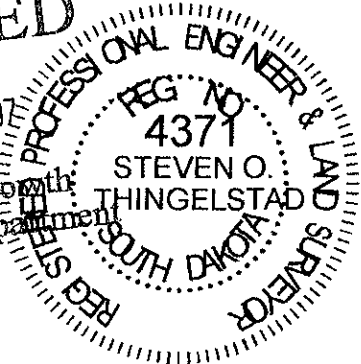
SCALE: 1" = 20'
 SEPTEMBER 18, 2007



RECEIVED

OCT 12 2007

Rapid City Growth
 Management Department

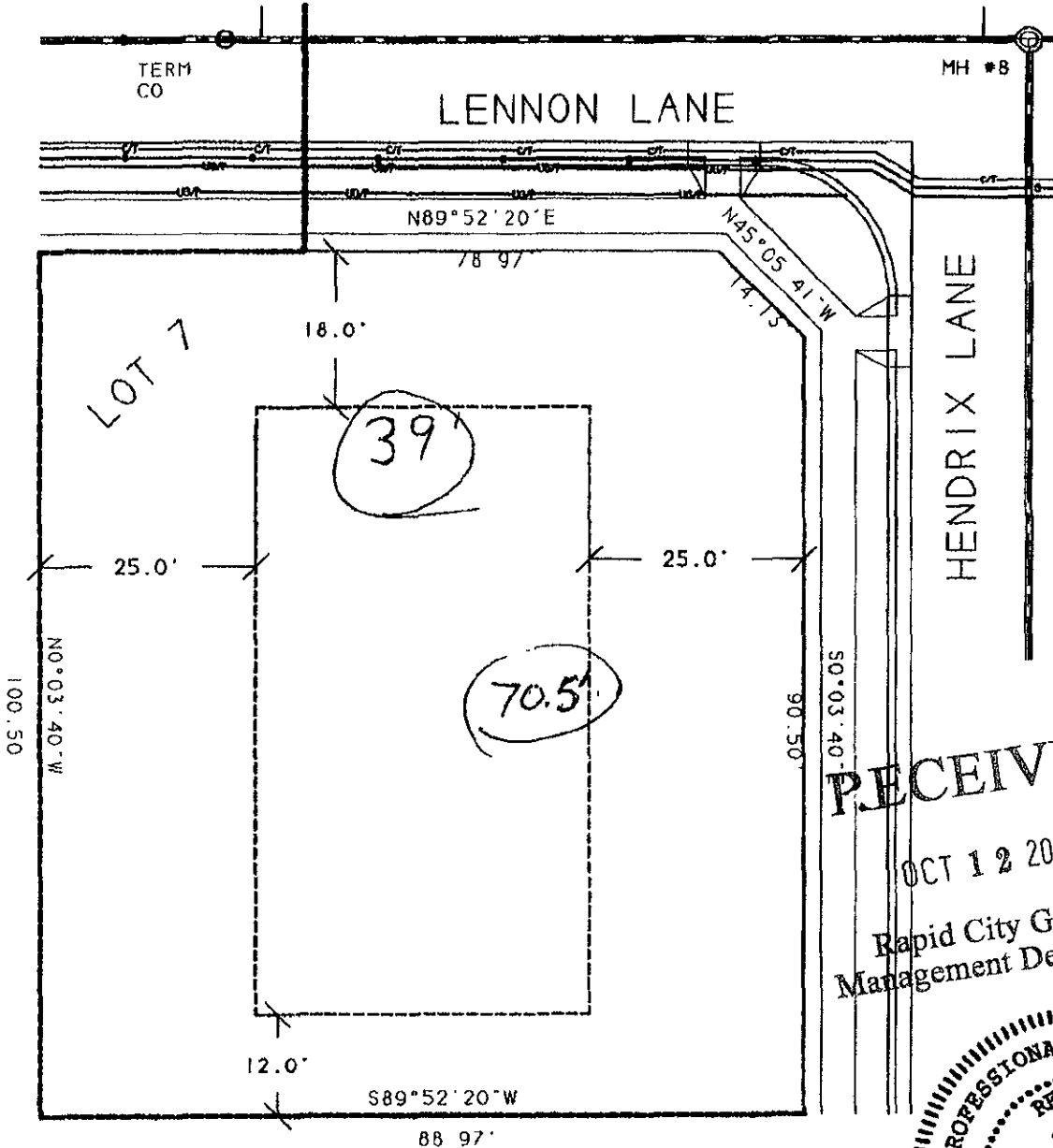


PREPARED BY: STEVEN O. THINGELSTAD
 BRITTON ENGINEERING & LAND SURVEYING, INC.
 8035 BLACK HAWK ROAD, SUITE 5,
 BLACK HAWK, SOUTH DAKOTA 57718
 TELEPHONE: (605) 716-7988

EXHIBIT
OF
LOT 7
ROCKINON RANCH ESTATES
IN THE N 1/2 NE 1/4 SE 1/4 SECTION 23
ALL LOCATED IN T2N, R7E, BHM
RAPID CITY PENNINGTON COUNTY, SOUTH DAKOTA



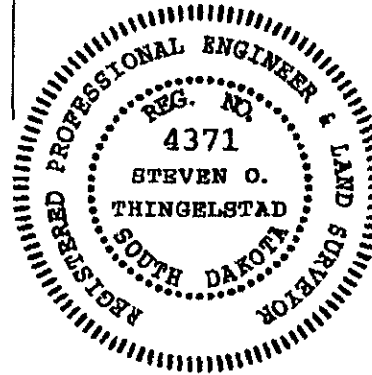
SCALE: 1" = 20'
SEPTEMBER 18, 2007



RECEIVED

OCT 12 2007

Rapid City Growth
Management Department

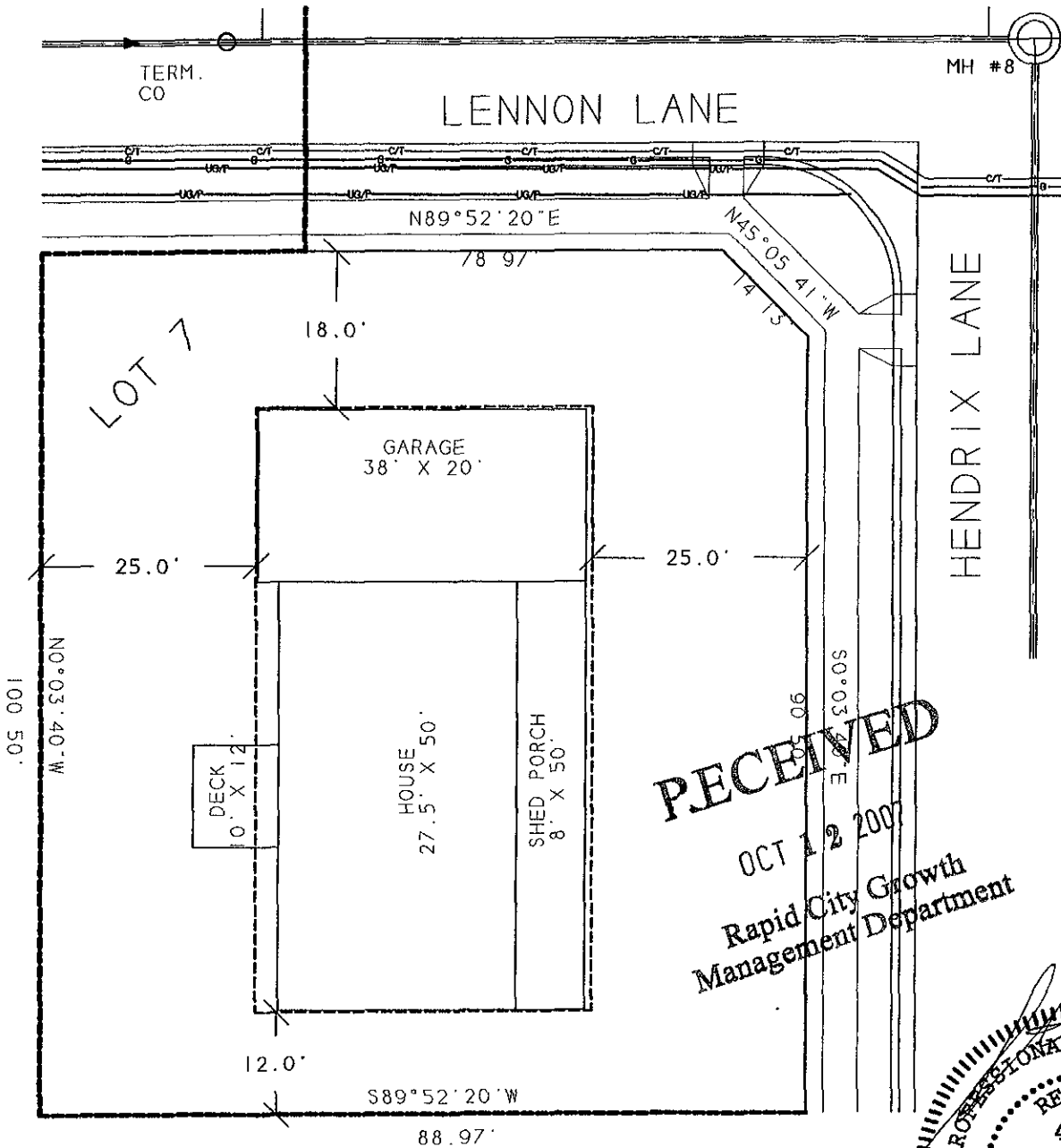


PREPARED BY: STEVEN O. THINGELSTAD
BRITTON ENGINEERING & LAND SURVEYING, INC.
8035 BLACK HAWK ROAD, SUITE 5,
BLACK HAWK, SOUTH DAKOTA 57718
TELEPHONE: (605) 716-7988

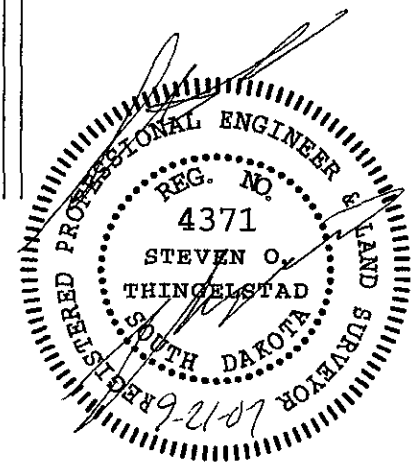
EXHIBIT
OF
LOT 7
ROCKINON RANCH ESTATES
IN THE N 1/2 NE 1/4 SE 1/4 SECTION 23
ALL LOCATED IN T2N, R7E, BHM
RAPID CITY PENNINGTON COUNTY, SOUTH DAKOTA



SCALE: 1" = 20'
SEPTEMBER 18, 2007



RECEIVED
OCT 12 2007
Rapid City Growth
Management Department



PREPARED BY: STEVEN O. THINGELSTAD
BRITTON ENGINEERING & LAND SURVEYING, INC.
8035 BLACK HAWK ROAD, SUITE 5,
BLACK HAWK, SOUTH DAKOTA 57718
TELEPHONE: (605) 716-7988