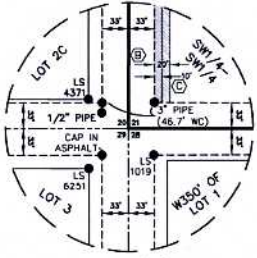
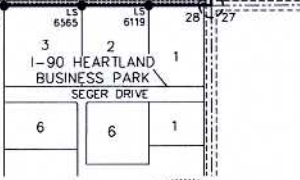
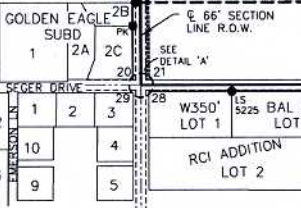
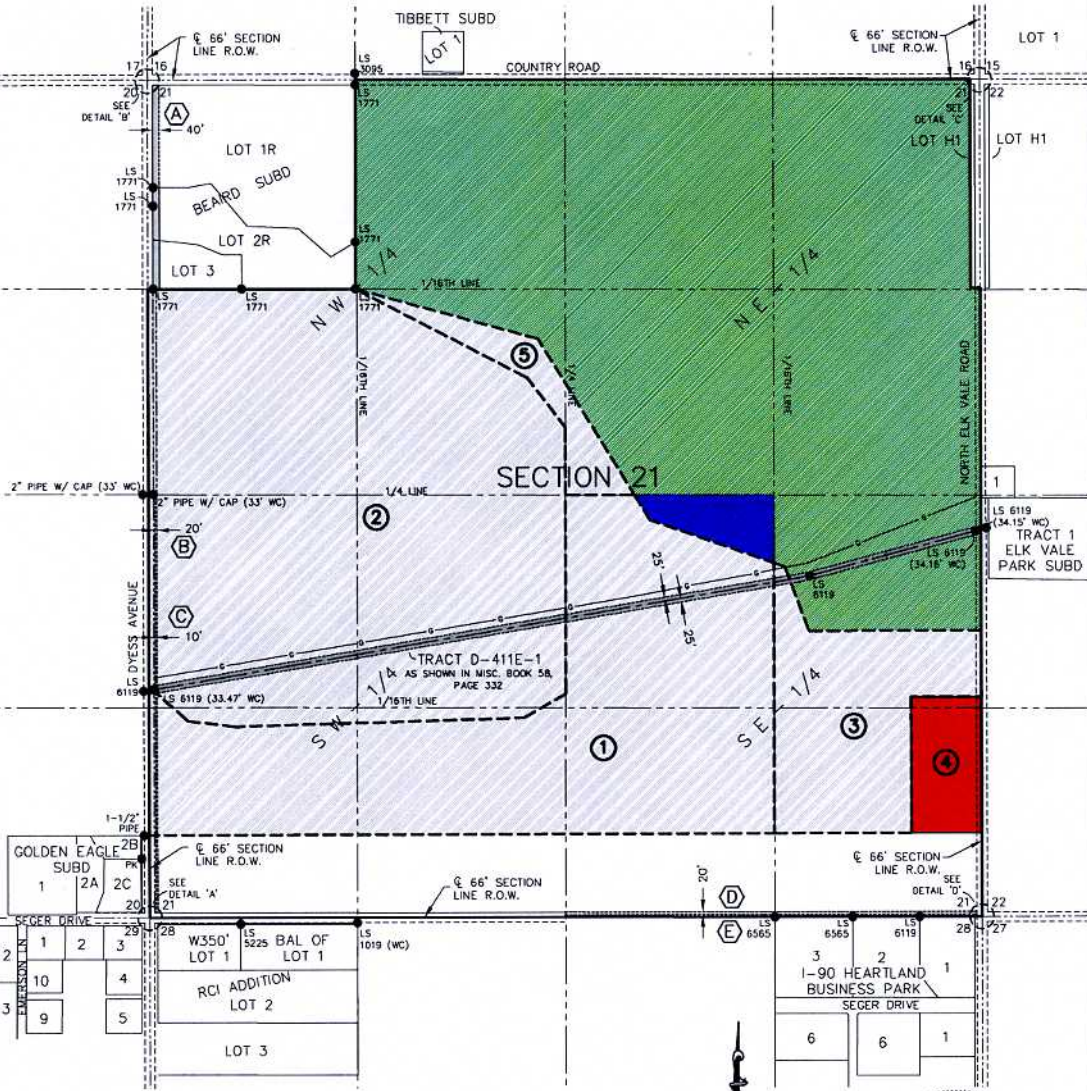
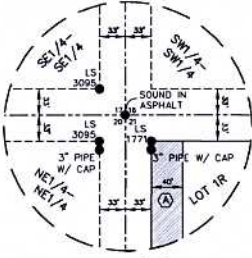


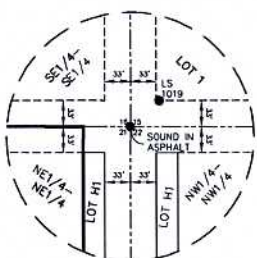
FUTURE LAND USE  
**SECTION 21**  
**T2N, R8E, BHM**  
 PENNINGTON COUNTY, SOUTH DAKOTA



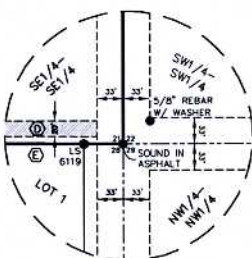
DETAIL 'A'  
 SCALE: 1"=100'



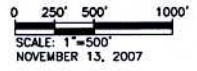
DETAIL 'B'  
 SCALE: 1"=100'



DETAIL 'C'  
 SCALE: 1"=100'



DETAIL 'D'  
 SCALE: 1"=100'



**ZONING NOTES**

- ① PUBIC TO LL
  - ② L.D.R. TO LL
  - ③ R.R. TO LL
  - ④ R.R. TO C.C.
  - ⊙ R.R. TO LL
- G.C.   
  R.R.  
 LI.   
  PUBLIC

**SHOWN EASEMENTS**

- A 40' WIDE WEST RIVER ELECTRIC R.O.W. EASEMENT AS SHOWN IN MISC. BOOK 11, PAGE 4910
- B 20' WIDE M.D.U. PIPELINE EASEMENT AS SHOWN IN MISC. BOOK 93, PAGE 8388, MISC. BOOK 93, PAGE 8390, & MISC. BOOK 93, PAGE 8391
- C 10' WIDE WEST RIVER ELECTRIC R.O.W. EASEMENT AS SHOWN IN MISC. BOOK 11, PAGE 4905 & MISC. BOOK 11, PAGE 4910
- D 20' WIDE EASEMENT FOR PUBLIC & PRIVATE UTILITIES AS SHOWN IN MISC. BOOK 137, PAGE 1298
- E PREVIOUSLY VACATED 66' WIDE SECTION LINE R.O.W. AS SHOWN IN MISC. BOOK 140, PAGE 1681



**BLANKET EASEMENTS**

1. MONTANA-DAKOTA UTILITIES CO. PIPELINE AND TELEPHONE LINE EASEMENT AS SHOWN IN MISC. BOOK 49, PAGE 226.  
 LOCATED IN THE SW 1/4 & SE 1/4 OF NE 1/4, SECTION 21.
2. MONTANA-DAKOTA UTILITIES CO. PIPELINE AND TELEPHONE LINE EASEMENT AS SHOWN IN MISC. BOOK 58, PAGE 328.  
 LOCATED IN THE SW 1/4 OF NE 1/4 & THE SE 1/4 OF NE 1/4 & THE NW 1/4 OF SE 1/4, SECTION 21.
3. MONTANA-DAKOTA UTILITIES CO. PIPELINE AND TELEPHONE LINE EASEMENT AS SHOWN IN MISC. BOOK 58, PAGE 328.  
 LOCATED IN THE NW 1/4 OF NE 1/4, SECTION 21.
4. MONTANA-DAKOTA UTILITIES CO. PIPELINE AND TELEPHONE LINE EASEMENT AS SHOWN IN MISC. BOOK 58, PAGE 328.  
 LOCATED IN THE SE 1/4 OF SE 1/4, SECTION 21.
5. BLACK HILLS UTILITIES EASEMENT AS SHOWN IN MISC. BOOK V, PAGE 6.  
 LOCATED IN THE SW 1/4 OF NE 1/4 & THE NW 1/4 OF SE 1/4, SECTION 21.