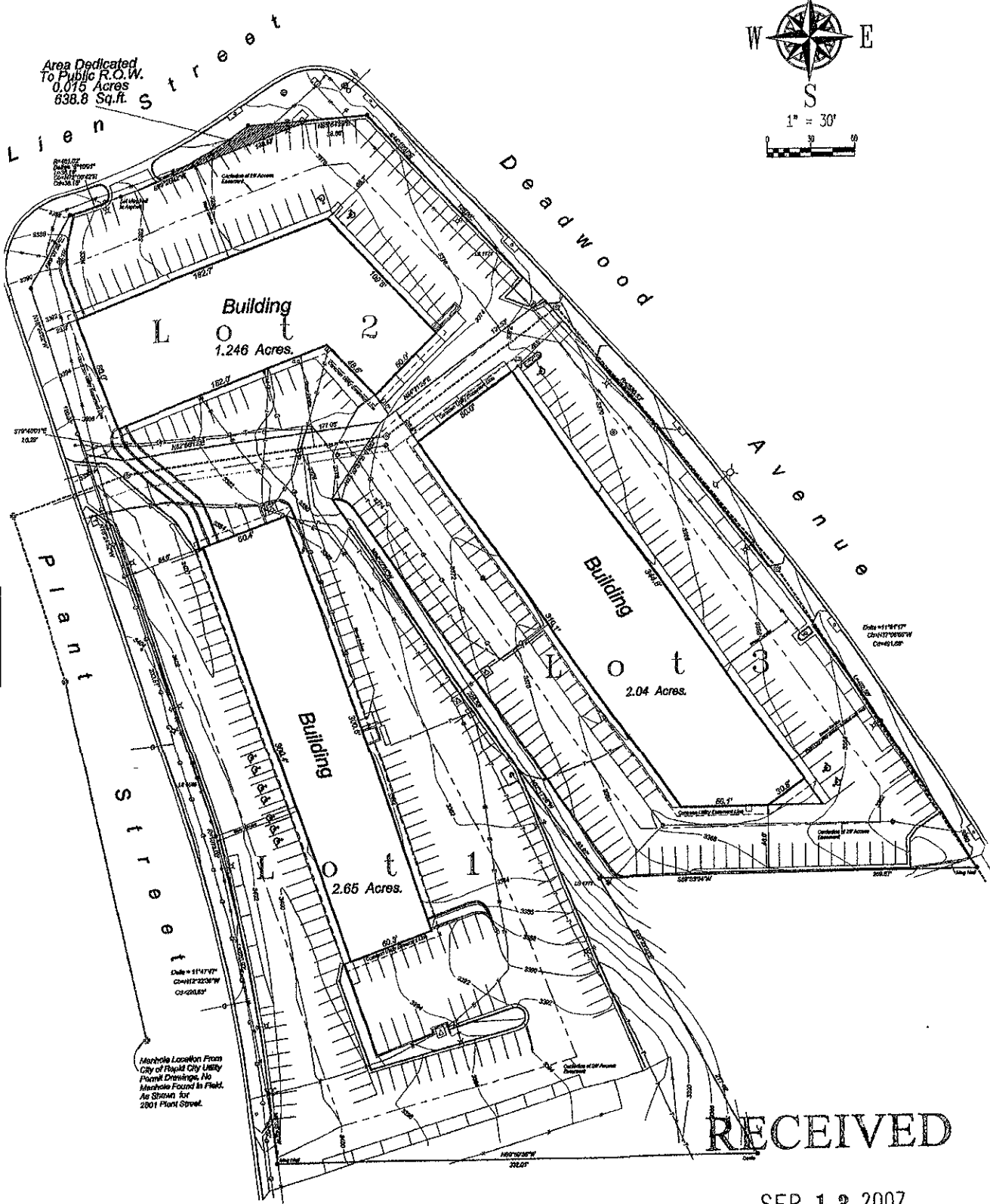




Area Dedicated  
To Public R.O.W.  
0.015 Acres  
838.8 Sq.ft.



Building  
Lot 2  
1.246 Acres.

Building  
Lot 3  
2.04 Acres.

Building  
Lot 1  
2.65 Acres.

Manhole Location From  
City of Rapid City Utility  
Plant Drawings. No  
Manhole Found in Field.  
As Shown for  
2801 Plant Street.

RECEIVED

SEP 13 2007

Rapid City Growth  
Management Department