

Dakota Canyon Market Place
Rapid City, South Dakota

Planning Commission Members
City Council Men and Women;

Attached are documents to assist in understanding the components of the Dakota Canyon Marketplace tax increment district.

These documents along with the project plan provided by the city staff will hopefully better inform you on the project, stimulate questions or comments, and add greater clarity to the project scope.

Of particular interest is the Wal-Mart site line development photo's and map. These photos were taken from the area in Enchanted Hills where 6 or 7 homes are directly impacted visually. I believe these are the only home owners which will be able to see the actual development in any close proximity. The photos depict the Wal-Mart store at the grade elevation it is to be constructed. This shows the store with the roof at approximately the elevation of Highway 16.

If you have questions r comments or would like more information please feel free to call.

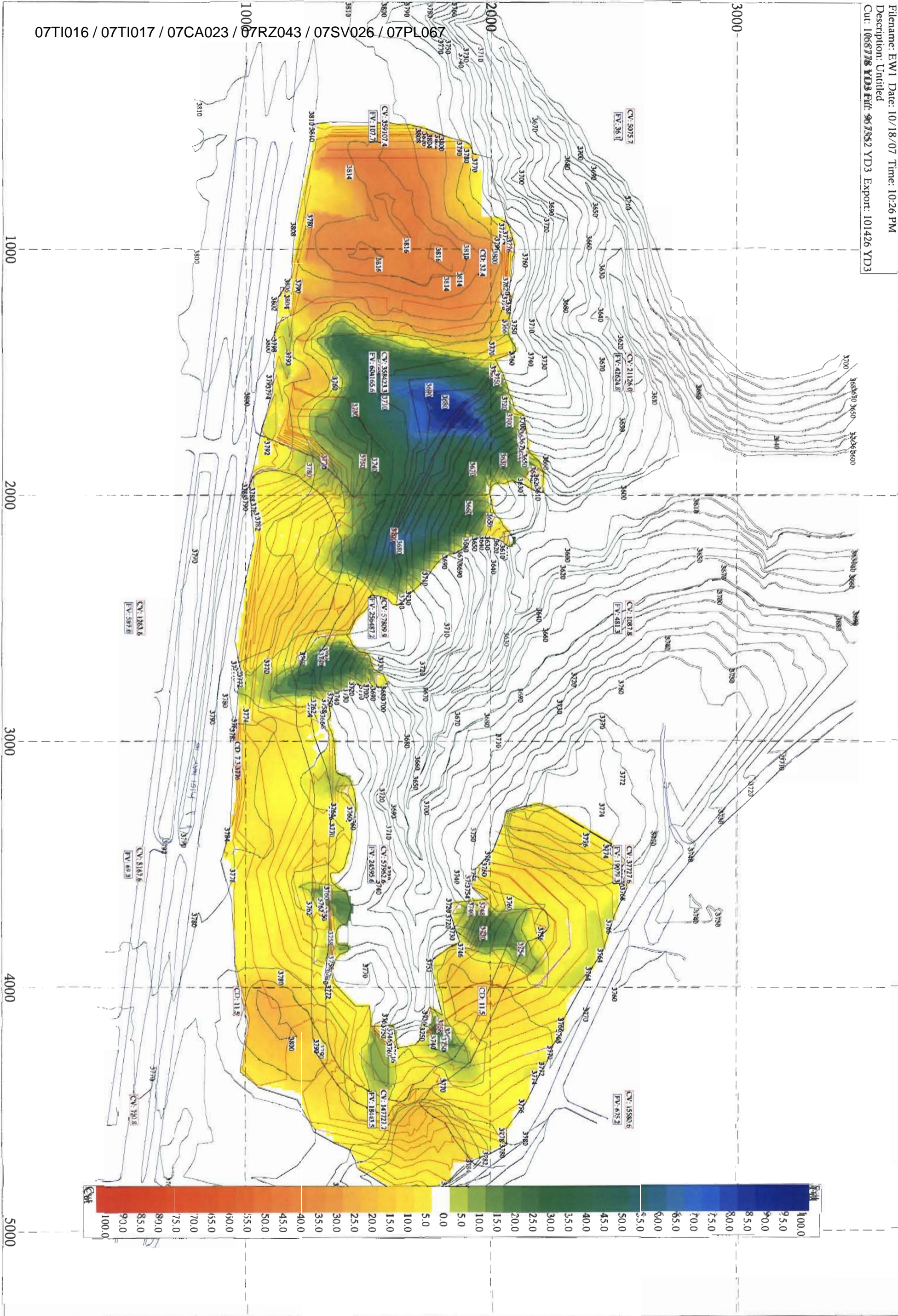
Cordially,

James Scull Jr.
Project Manager

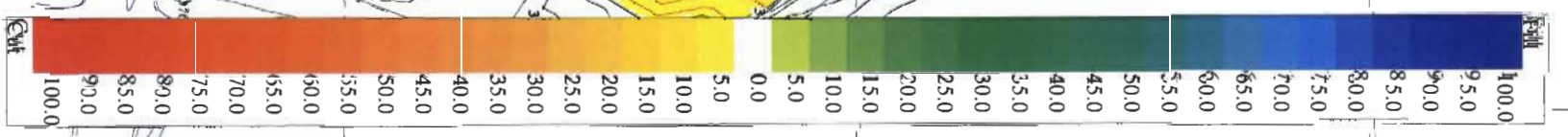
Dakota Canyon Market Place
T I D Discussion
October 22, 2007

Exhibits as follows:

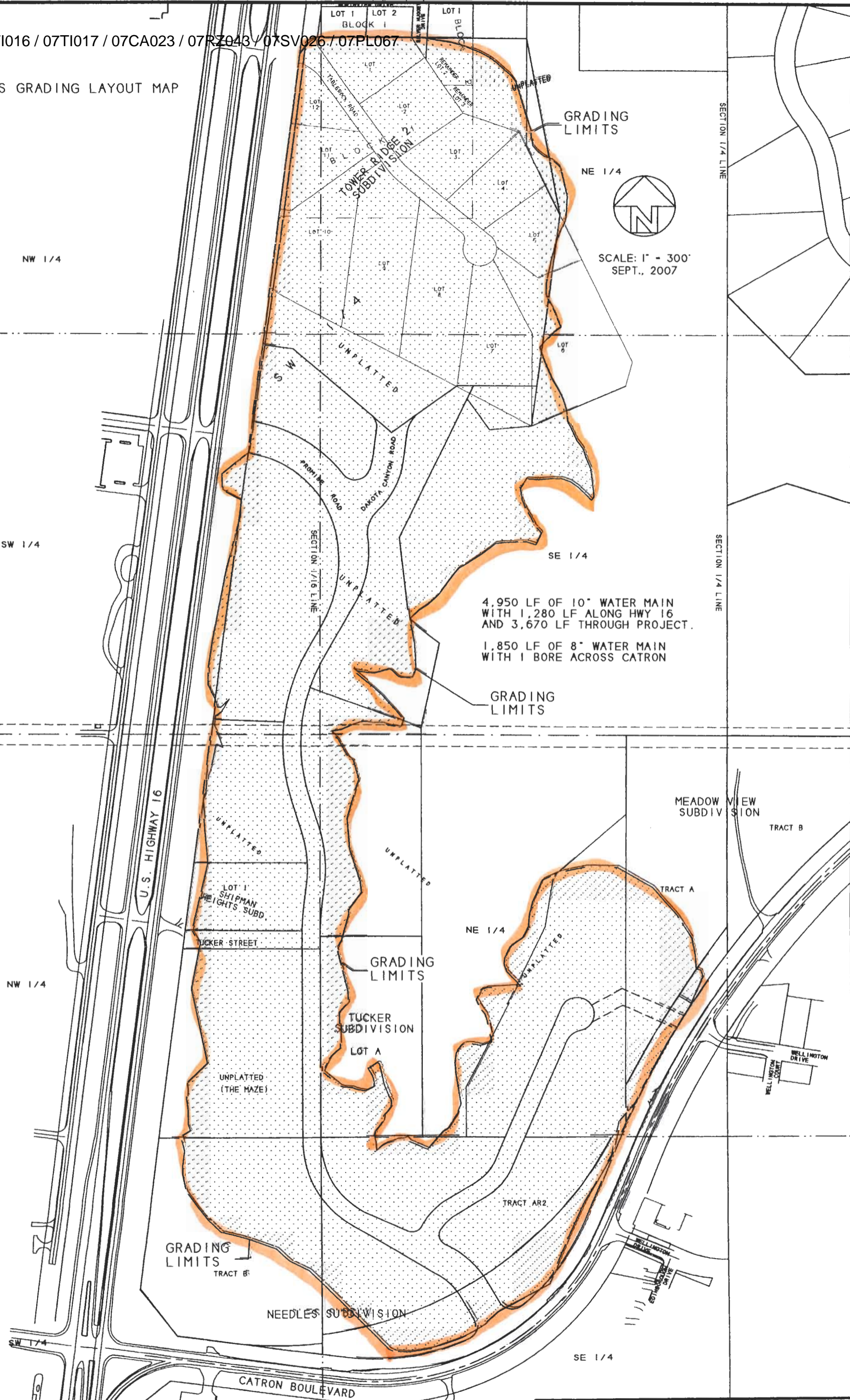
- Grading Maps Cut and Fill Color Rendering and Grading Location
- Water Line Map with Sizes
- Sewer District Map
- Project Sewer Line Map with Depths of the Sewers
- Catron Sewer Map
- Park Map
- Wal-Mart Site Line Development Photo and Map



07TI016 / 07TI017 / 07CA023 / 07RZ043 / 07SV026 / 07PL067



MASS GRADING LAYOUT MAP



SCALE: 1" = 300'
SEPT., 2007

4,950 LF OF 10" WATER MAIN
WITH 1,280 LF ALONG HWY 16
AND 3,670 LF THROUGH PROJECT.

1,850 LF OF 8" WATER MAIN
WITH 1 BORE ACROSS CATRON

WATER LAYOUT MAP

NW 1/4

SW 1/4

SE 1/4

NW 1/4

SE 1/4



SCALE: 1" = 300'
SEPT., 2007

4,950 LF OF 10" WATER MAIN
WITH 1,280 LF ALONG HWY 16
AND 3,670 LF THROUGH PROJECT.
1,850 LF OF 8" WATER MAIN
WITH 1 BORE ACROSS CATRON

EXISTING 14" WATER MAIN

U.S. HIGHWAY 16

LOT 1 SHIPMAN HEIGHTS SUBD.

TUCKER STREET

TUCKER SUBDIVISION
LOT A

UNPLATTED (THE MAZE)

12" WATER MAIN (TYP.)

TRACT B

NEEDLES SUBDIVISION

CATRON BOULEVARD

CONNECT TO EXISTING 10" WATER LINE

TOWER RIDGE 2, SUBDIVISION

12" WATER MAIN (TYP.)

8" WATER MAIN

SECTION 1/16 LINE

UNPLATTED

UNPLATTED

UNPLATTED

UNPLATTED

SECTION 1/4 LINE

SECTION 1/4 LINE

MEADOW VIEW SUBDIVISION

TRACT B

TRACT A

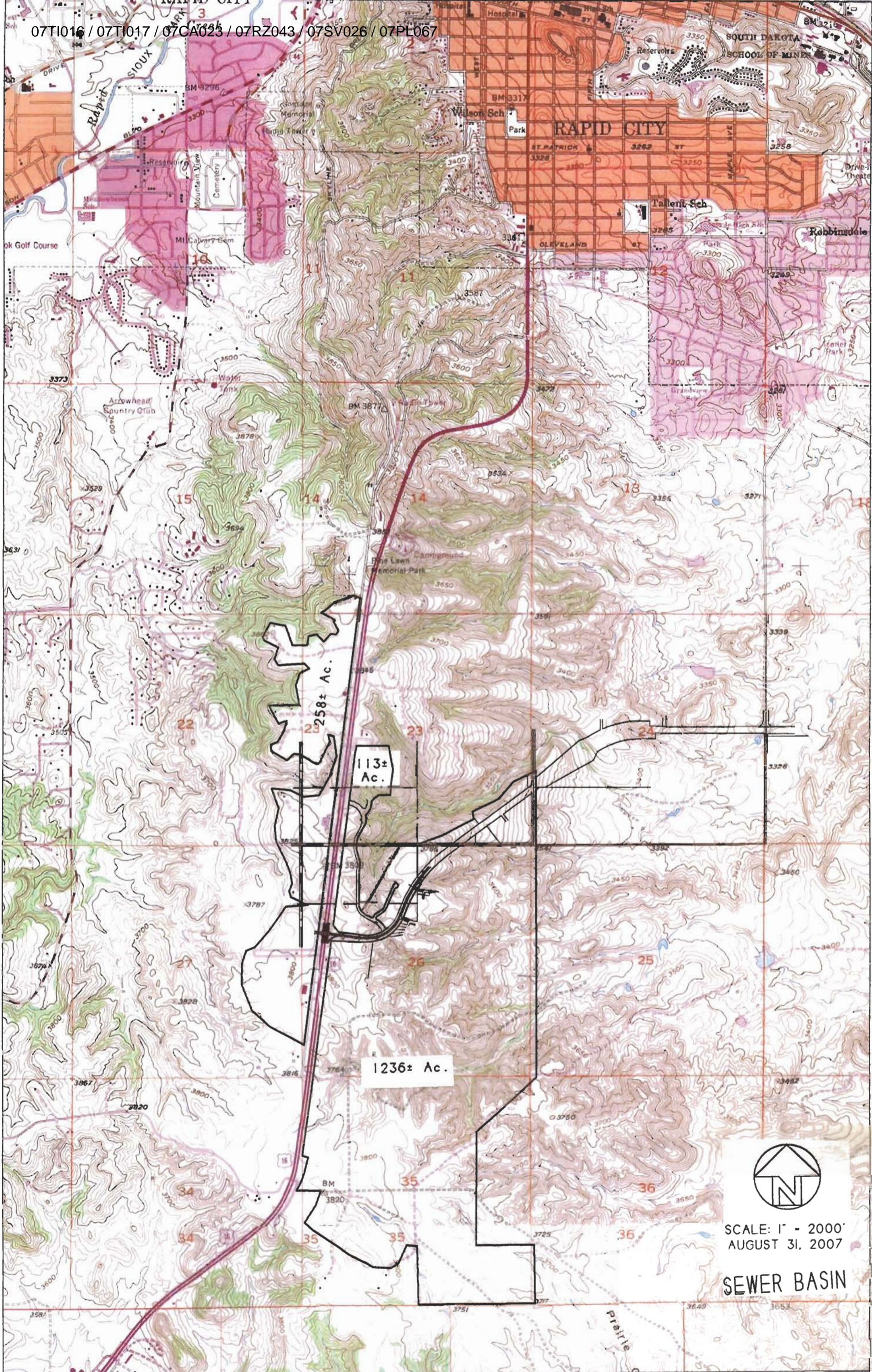
8" WATER MAIN (TYP.)

BORE ACROSS CATRON BLVD. CONNECT TO EXISTING 6" WATER LINE

8" WATER MAIN (TYP.)

TRACT AR2

12" WATER MAIN (TYP.)



SCALE: 1" = 2000'
AUGUST 31, 2007

SEWER BASIN

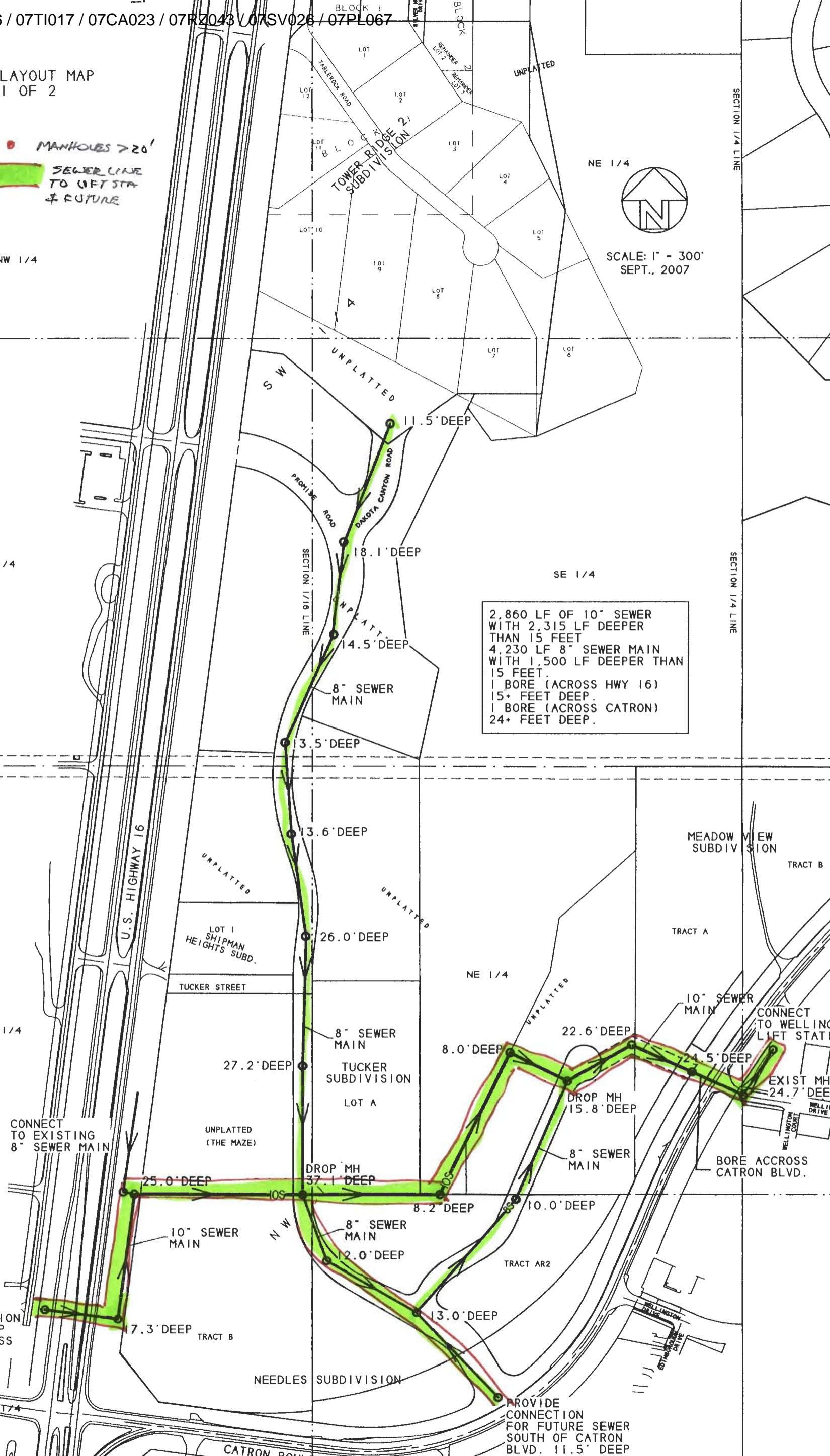
SEWER LAYOUT MAP
SHEET 1 OF 2

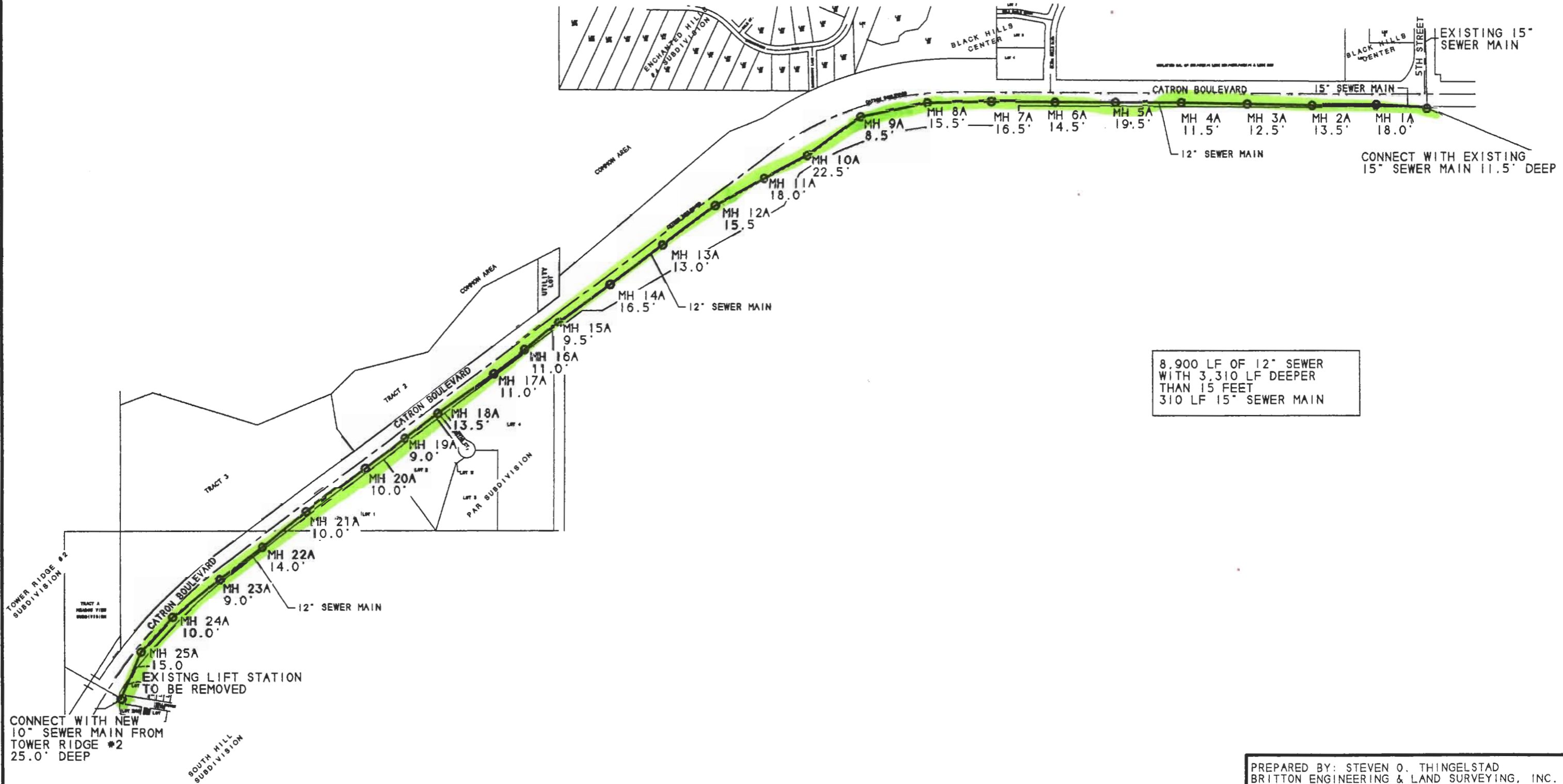
● MANHOLES > 20'
SEWER LINE TO LIFT STA & FUTURE



SCALE: 1" = 300'
SEPT., 2007

2,860 LF OF 10" SEWER WITH 2,315 LF DEEPER THAN 15 FEET
4,230 LF 8" SEWER MAIN WITH 1,500 LF DEEPER THAN 15 FEET.
1 BORE (ACROSS HWY 16) 15+ FEET DEEP.
1 BORE (ACROSS CATRON) 24+ FEET DEEP.



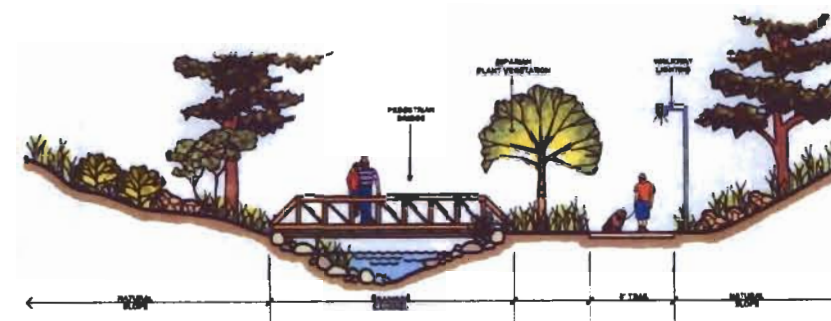
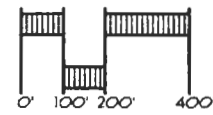


8,900 LF OF 12" SEWER
WITH 3,310 LF DEEPER
THAN 15 FEET
310 LF 15" SEWER MAIN

Dakota Canyon Nature Preserve

Rapid City, South Dakota

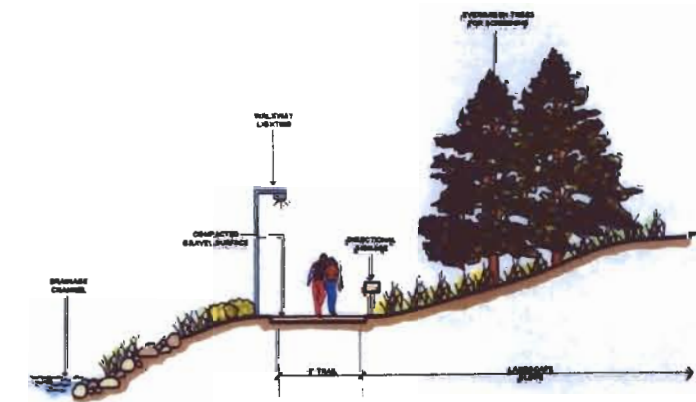
PROJECT NO.: R01-299
 FILE NAME: clu299-SD2
 DATE: SEPT. 5, 2001



NATURE TRAIL - A
 SCALE: 1/8"=1'-0"



NATURE TRAIL - C
 SCALE: 1/8"=1'-0"



NATURE TRAIL - B
 SCALE: 1/8"=1'-0"