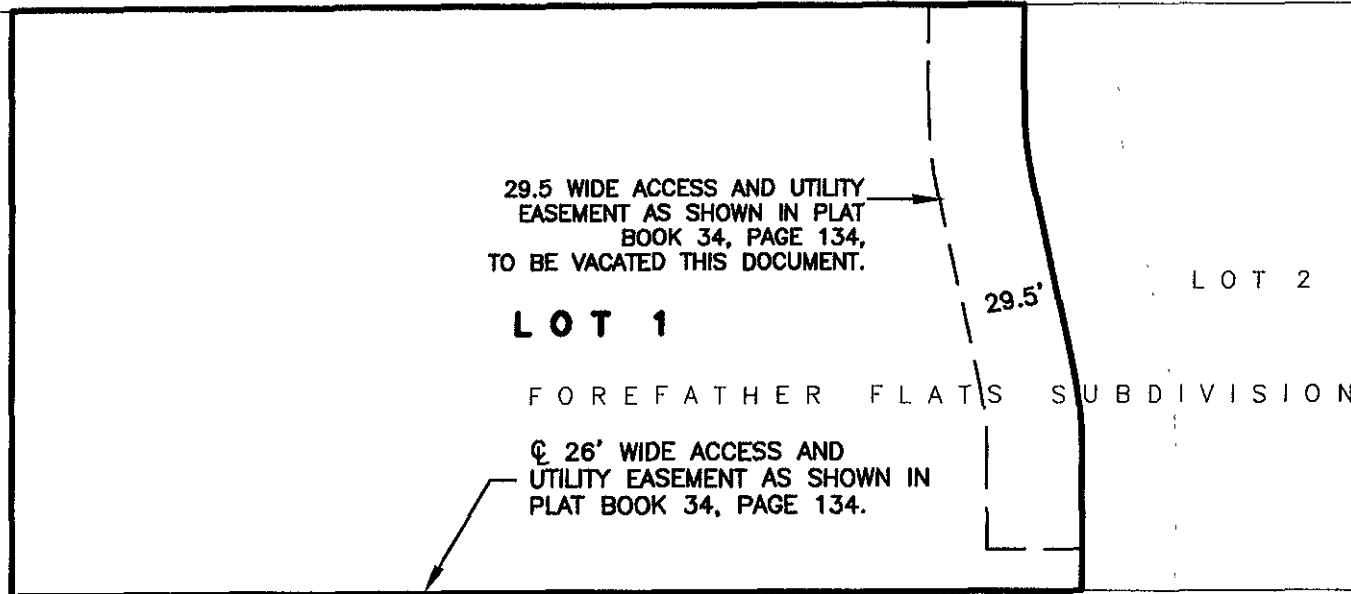


VACATION OF ACCESS AND UTILITY EASEMENT
LOT 1 OF FOREFATHER FLATS SUBDIVISION
 IN THE NE1/4 OF THE SW1/4
 SECTION 28, T2N, R8E, BHM,
 RAPID CITY, PENNINGTON COUNTY, SOUTH DAKOTA

EAST MALL DRIVE



29.5 WIDE ACCESS AND UTILITY
 EASEMENT AS SHOWN IN PLAT
 BOOK 34, PAGE 134,
 TO BE VACATED THIS DOCUMENT.

LOT 1

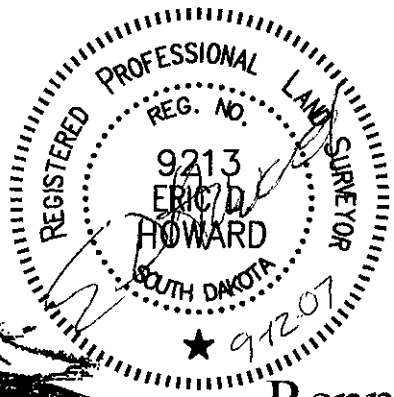
FOREFATHER FLATS SUBDIVISION

26' WIDE ACCESS AND
 UTILITY EASEMENT AS SHOWN IN
 PLAT BOOK 34, PAGE 134.

LOT 2

LOT 3

UNPLATTED PORTION OF SW1/4 N OF I-90
 LESS LOT 3 OF STARLITE SUBDIVISION
 LESS GLM SUBDIVISION NO.2
 LESS LOT H15 AND LESS R.O.W.



SEPTEMBER 12, 2007



SCALE 1" = 60'

Renner Associates, LLC.

616 Sixth St. * Rapid City, SD 57701 * 605/721-7310

FAX: 605/721-7313 * E-MAIL: Gary@RennerAssoc.com

Spearfish Office: 605/717-0016



CITY HALL 1903